



US007479819B2

(12) **United States Patent**  
**Bueti et al.**

(10) **Patent No.:** **US 7,479,819 B2**  
(45) **Date of Patent:** **Jan. 20, 2009**

(54) **CLOCK DISTRIBUTION NETWORK, STRUCTURE, AND METHOD FOR PROVIDING BALANCED LOADING IN INTEGRATED CIRCUIT CLOCK TREES**

(75) Inventors: **Serafino Bueti**, Waterbury, VT (US); **Hayden C. Cranford, Jr.**, Cary, NC (US); **Joseph A. Iadanza**, Hinesburg, VT (US); **Pradeep Thiagarajan**, South Burlington, VT (US); **Sebastian T. Ventrone**, South Burlington, VT (US)

(73) Assignee: **International Business Machines Corporation**, Armonk, NY (US)

(\* ) Notice: Subject to any disclaimer, the term of this patent is extended or adjusted under 35 U.S.C. 154(b) by 36 days.

(21) Appl. No.: **11/610,848**

(22) Filed: **Dec. 14, 2006**

(65) **Prior Publication Data**

US 2008/0143416 A1 Jun. 19, 2008

(51) **Int. Cl.**  
**G06F 1/04** (2006.01)

(52) **U.S. Cl.** ..... **327/295; 327/291**

(58) **Field of Classification Search** ..... None  
See application file for complete search history.

(56) **References Cited**

U.S. PATENT DOCUMENTS

4,812,684	A *	3/1989	Yamagiwa et al. ....	327/297
5,172,330	A *	12/1992	Watanabe et al. ....	716/17
5,691,662	A *	11/1997	Soboleski et al. ....	327/292
6,114,877	A *	9/2000	Brown et al. ....	326/96
6,313,683	B1 *	11/2001	Block et al. ....	327/295
6,583,659	B1 *	6/2003	Kwong et al. ....	327/295
7,095,265	B2 *	8/2006	Nguyen et al. ....	327/293

\* cited by examiner

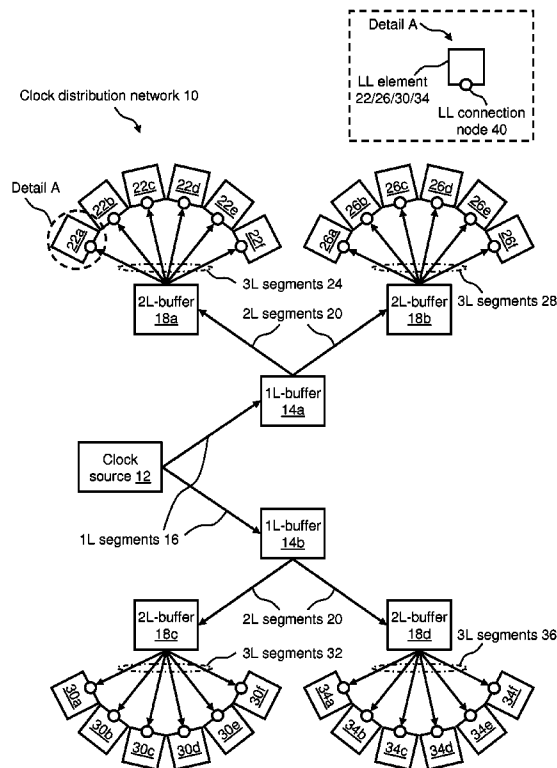
*Primary Examiner*—Cassandra Cox

(74) *Attorney, Agent, or Firm*—Downs Rachlin Martin PLLC

(57) **ABSTRACT**

A clock distribution network, structure, and method for providing balanced loading is disclosed. In particular, a clock distribution network may be formed of one or more clock fanout distribution levels. Each respective distribution level may include an equal number of buffer circuits and wiring routes that have substantially identical physical and electrical properties. Additionally, a final distribution level may include wiring routes that have substantially identical physical and electrical properties connecting buffer circuits to one or more logic leaf connection nodes.

**15 Claims, 4 Drawing Sheets**



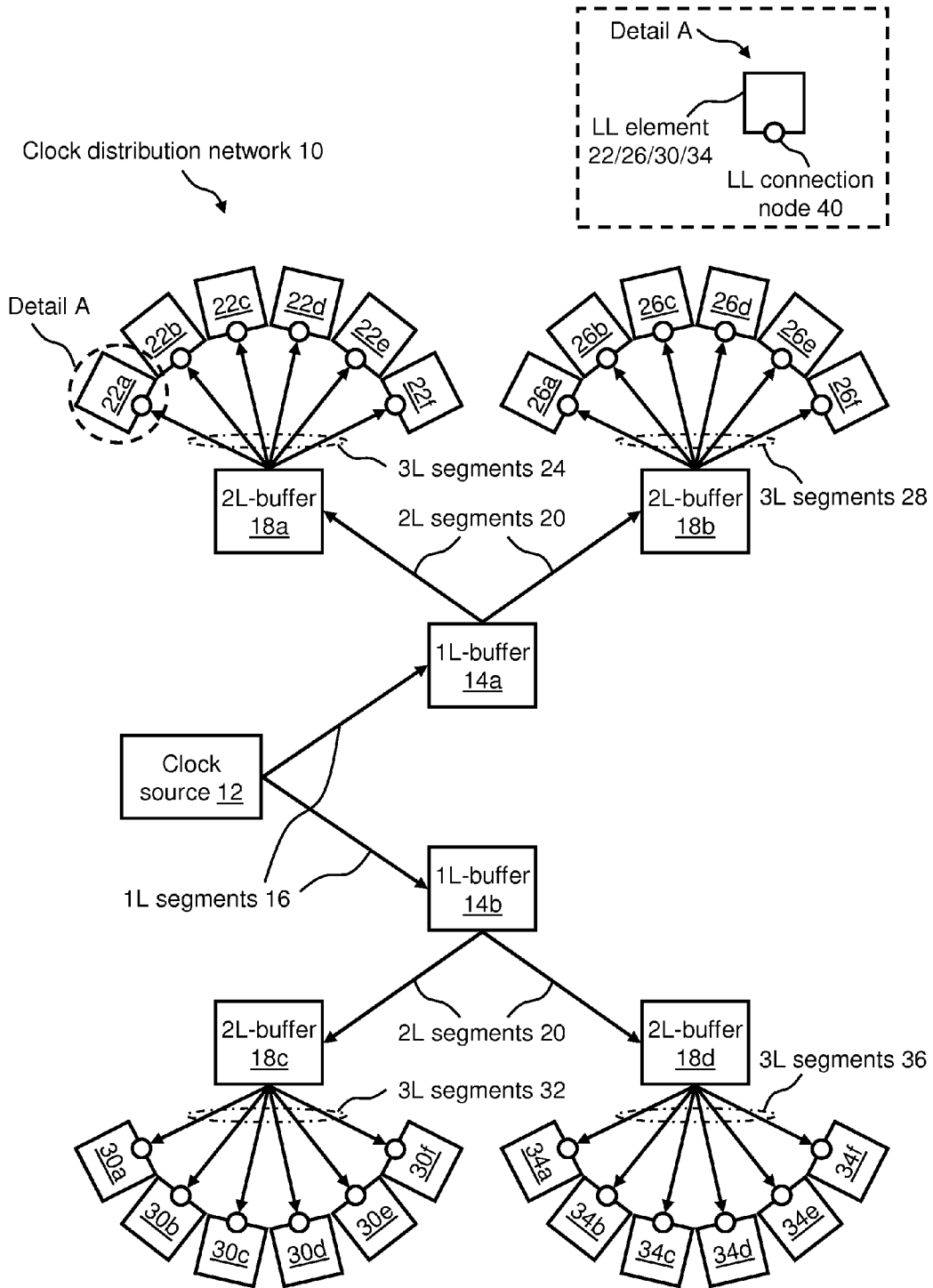


FIG. 1

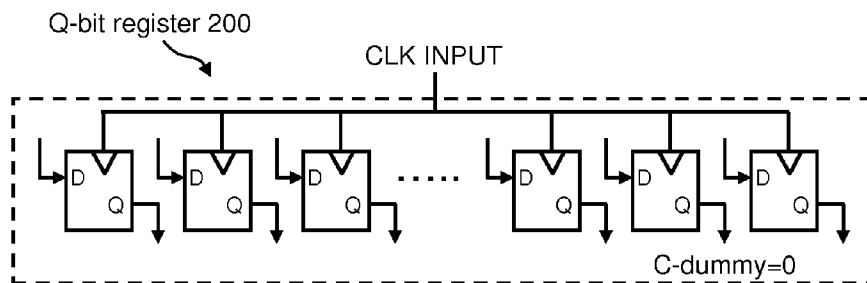


FIG. 2

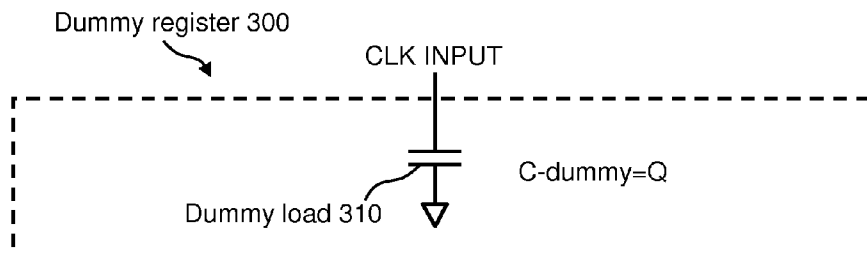


FIG. 3

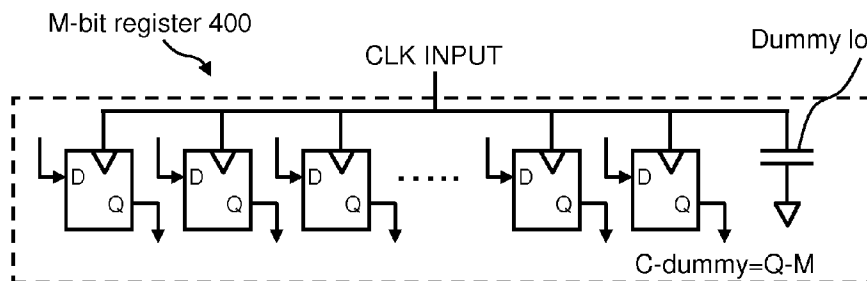


FIG. 4

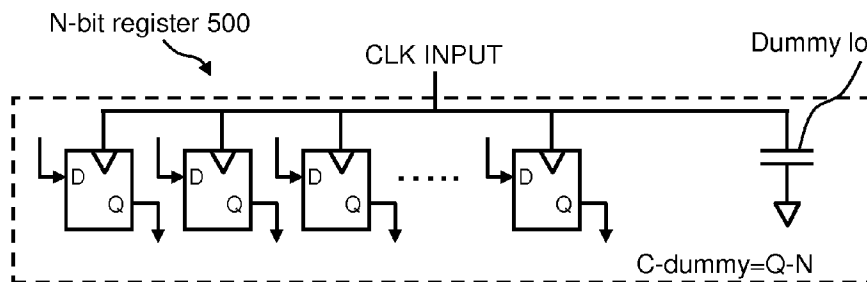


FIG. 5

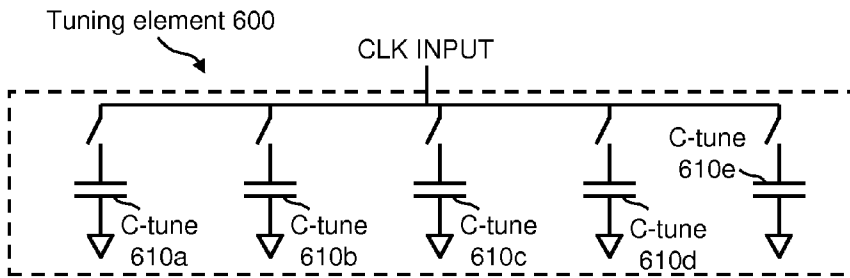


FIG. 6

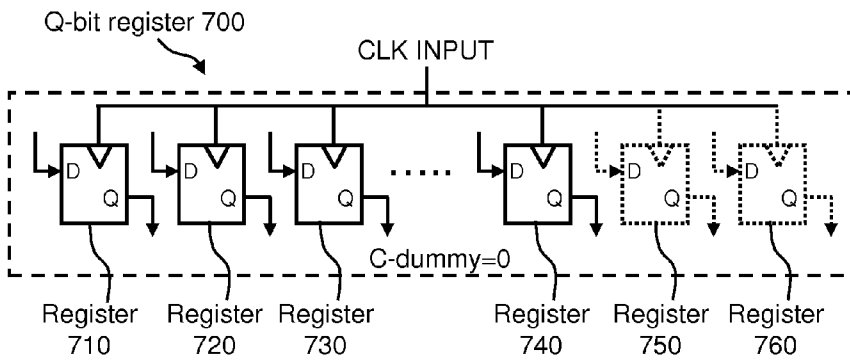


FIG. 7

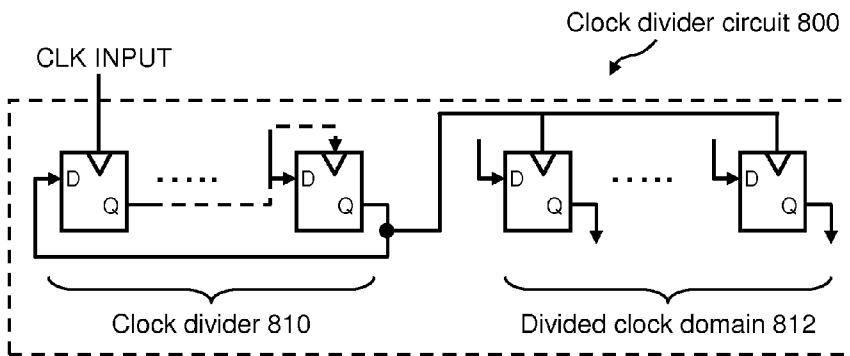


FIG. 8

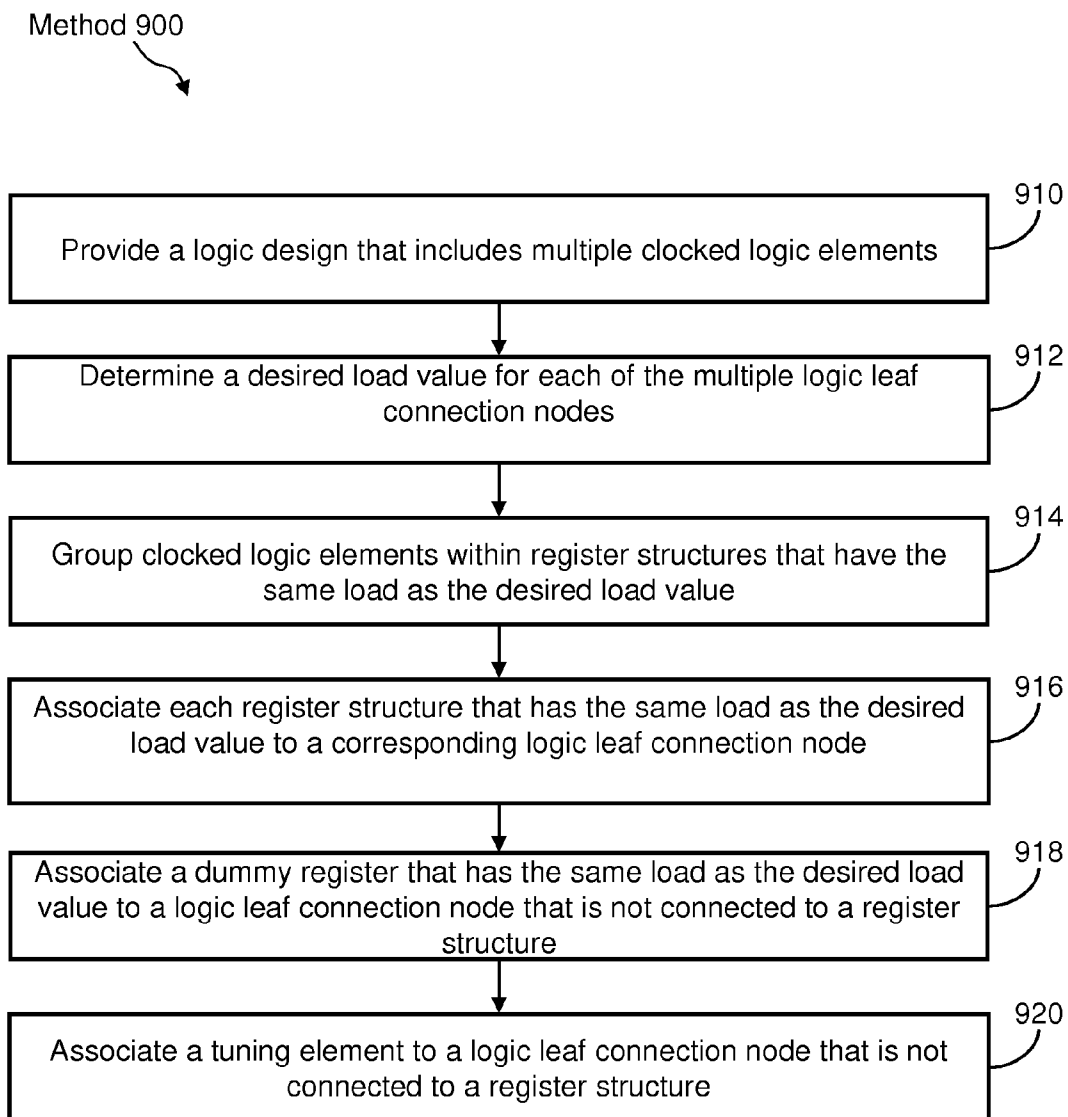


FIG. 9

1

**CLOCK DISTRIBUTION NETWORK,  
STRUCTURE, AND METHOD FOR  
PROVIDING BALANCED LOADING IN  
INTEGRATED CIRCUIT CLOCK TREES**

RELATED APPLICATION DATA

This application is related to U.S. patent application Ser. No. 11/610,963, filed Dec. 14, 2006, entitled "Clock Distribution Network, Structure, and Method For Providing Balanced Loading In Integrated Circuit Trees," which is incorporated herein by reference in its entirety.

FIELD OF THE DISCLOSURE

The present disclosure generally relates to the field of clock distribution networks in integrated circuits. In particular, the present disclosure is directed to a clock distribution network, structure, and method for providing balanced loading in integrated circuit clock trees.

BACKGROUND

In integrated circuit (IC) design, one of the biggest challenges in the design of high speed, high density application-specific integrated circuits (ASICs) is the implementation of clock distribution networks (i.e., clock trees) for the delivery of synchronization signals to the many logic elements (e.g., latches) on the die with minimum skew and with minimum power consumption. Traditionally, a clock tree has been implemented through a series of synthesis and physical design steps that focus on force fitting a clock distribution network to a particular logic design and then redesigning to compensate for lack of balance of capacitive and resistive loads across the distribution tree. While this has worked well in past generations of ASIC offerings, ever increasing clock speeds and latch counts, in combination with (1) larger die with the associated increase in resistive and capacitive loading, and (2) increasing sensitivity to cross chip variation in transistor parameters because of aggressive scaling of transistor dimensions, has stressed the traditional clock tree methodology.

A need exists for a clock distribution network, structure, and method that more inherently provides balanced loading in integrated circuit clock trees.

SUMMARY OF THE DISCLOSURE

In one embodiment, a clock distribution network of an integrated circuit is provided. The clock distribution network includes a clock source; a first distribution level of clock fanout including a first set of buffer circuits and a first set of distribution segments, each of the first plurality of distribution segments connecting the clock source to a corresponding respective one of the first set, each of the first plurality of distribution segments having substantially the same physical and electrical properties, each buffer circuit of the first set having substantially the same load; a second distribution level of clock fanout including a second set of buffer circuits and a second plurality of distribution segments, each of the second plurality of distribution segments connecting a buffer circuit of the first set to a buffer circuit of the second set, each buffer circuit of the first set being connected to an equal number of buffer circuits of the second set, each of the second plurality of distribution segments having substantially the same load, and each buffer circuit of the second set having substantially the same load; a logic leaf distribution level including one or

2

more logic leaf connection nodes and one or more logic leaf distribution segments, each of the one or more logic leaf distribution segments connecting a buffer circuit of the second set to a node of the one or more logic leaf connection nodes, each buffer circuit of the second set being connected to an equal number of the one or more logic leaf connection nodes and driving substantially the same load; and a plurality of logic leaf elements each connected to a corresponding respective one of the plurality of logic leaf connection nodes, each of the plurality of logic leaf elements having a first load.

In another embodiment, a clock distribution network of an integrated circuit is provided. The clock distribution network include a clock source; a first distribution level of clock fanout including a first set of buffer circuits and a first set of distribution segments, each of the first plurality of distribution segments connecting the clock source to a corresponding respective one of the first set, each of the first plurality of distribution segments having substantially the same physical and electrical properties, each buffer circuit of the first set having substantially the same load; a second distribution level of clock fanout including a second set of buffer circuits and a second plurality of distribution segments, each of the second plurality of distribution segments connecting a buffer circuit of the first set to a buffer circuit of the second set, each buffer circuit of the first set being connected to an equal number of buffer circuits of the second set, each of the second plurality of distribution segments having substantially the same load, each buffer circuit of the second set having substantially the same load; a logic leaf distribution level including a plurality of logic leaf connection nodes and a third plurality of distribution segments, each of the third plurality of distribution segments connecting a buffer circuit of the second set to a node of the plurality of logic leaf connection nodes, each buffer circuit of the second set being connected to an equal number of the plurality of logic leaf connection nodes, each of the third plurality of distribution segments having substantially the same physical and electrical properties; and a plurality of logic leaf elements each connected to a corresponding respective one of the plurality of logic leaf connection nodes, each of the plurality of logic leaf elements having a first load, wherein at least one of the plurality of logic leaf elements includes a dummy register including one or more dummy load elements providing the first load.

In yet another embodiment, a clock distribution network of an integrated circuit is provided. The clock distribution network includes a clock source; a first distribution level of clock fanout including a first set of buffer circuits and a first set of distribution segments, each of the first plurality of distribution segments connecting the clock source to a corresponding respective one of the first set, each of the first plurality of distribution segments having substantially the same physical and electrical properties, each buffer circuit of the first set having substantially the same load; a second distribution level of clock fanout including a second set of buffer circuits and a second plurality of distribution segments, each of the second plurality of distribution segments connecting a buffer circuit of the first set to a buffer circuit of the second set, each buffer circuit of the first set being connected to an equal number of buffer circuits of the second set, each of the second plurality of distribution segments having substantially the same load, each buffer circuit of the second set having substantially the same load; a logic leaf distribution level including a plurality of logic leaf connection nodes and a third plurality of distribution segments, each of the third plurality of distribution segments connecting a buffer circuit of the second set to a node of the plurality of logic leaf connection nodes, each buffer circuit of the second set being connected to an equal

number of the plurality of logic leaf connection nodes, each of the third plurality of distribution segments having substantially the same physical and electrical properties; and a plurality of logic leaf elements each connected to a corresponding respective one of the plurality of logic leaf connection nodes, each of the plurality of logic leaf elements having a first load, wherein at least one of the plurality of logic leaf elements includes a dummy register including one or more dummy load elements providing the first load and wherein at least one of the plurality of logic leaf elements includes a logic register having a first number of bits providing the first load.

#### BRIEF DESCRIPTION OF THE DRAWINGS

For the purpose of illustrating the invention, the drawings show aspects of one or more embodiments of the invention. However, it should be understood that the present invention is not limited to the precise arrangements and instrumentalities shown in the drawings, wherein:

FIG. 1 illustrates a high level block diagram of an example of a clock distribution network that inherently provides balanced loading;

FIG. 2 illustrates a Q-bit register, which is an example of a logic leaf element that may be connected to a clock distribution network;

FIG. 3 illustrates a register connect dummy load, which is an example of a dummy register for mimicking a logic leaf element that may be connected to a clock distribution network;

FIG. 4 illustrates an M-bit register, which is another example of a logic leaf element that may be connected to a clock distribution network;

FIG. 5 illustrates an N-bit register, which is yet another example of a logic leaf element that may be connected to a clock distribution network;

FIG. 6 illustrates a tuning element, which is yet another example of a logic leaf element that may be connected to a clock distribution network;

FIG. 7 illustrates another Q-bit register, which is yet another example of a logic leaf element that may be connected to a clock distribution network;

FIG. 8 illustrates a clock divider circuit, which is yet another example of a logic leaf element that may be connected to a clock distribution network; and

FIG. 9 illustrates a flow diagram of an example of a method of integrating a clock distribution network and a logic design in an integrated circuit.

#### DETAILED DESCRIPTION

FIG. 1 illustrates a high level block diagram of one embodiment of a clock distribution network **10**, which is an example of a clock distribution network that inherently provides balanced loading. One or more instances of a clock distribution network, such as clock distribution network **10**, may be implemented within a single IC chip (not shown). In particular, a clock distribution network and structure, such as clock distribution network **10**, may be formed of any number of one or more clock fanout distribution levels and a logic leaf distribution level. Each respective distribution level may include one or more buffer circuits, wherein each buffer circuit drives the same number of substantially equal loads. In one example, each buffer circuit of a certain distribution level may drive four wiring routes to four loads, respectively. Additionally, all wiring routes within a particular distribution level have substantially identical physical and electrical properties. In

another example, a logic leaf distribution level, which is a final or Nth distribution level, may include a plurality of distribution segments. Each of distribution segments in a logic leaf distribution level connect a buffer circuit from the previous distribution level to one or more logic element. The distribution segments (i.e., wiring routes) connect the same number of logic elements to each of the buffer circuits of the previous level. In one example, each buffer circuit of the logic leaf distribution level may drive six wiring routes to six loads, respectively. Additionally, all wiring routes of the logic leaf distribution level have substantially identical physical and electrical properties. In one aspect, substantially identical physical and electrical properties, loading, and load distribution is maintained from one buffer circuit to another across each clock fanout distribution level and across the logic leaf distribution level of the clock distribution network in order to form a structurally balanced homogeneous topology. In doing so, the arrival time and skew of multiple clock signals at the output of the final or Nth distribution level of the clock distribution network may be substantially identical. More details of an example of such a clock distribution network are provided with reference to clock distribution network **10** of FIG. 1 below.

Clock distribution network **10** may include a clock source **12**, which may be any clock generator device that is internal or external to an IC chip. In one example, clock source **12** may be a phase-locked loop (PLL) circuit. In another example, clock source **12** may be a crystal oscillator. Clock source **12** may be the root of one or more clock distribution networks that are implemented within a single IC chip. A certain balanced routing is provided from clock source **12** to a first set of any number of clock tree buffer circuits. Wiring from clock source **12** to each of the first set of buffer circuits is made by use of substantially identical wiring routes of equal lengths. All wiring routes that are driven by clock source **12** have substantially identical physical and electrical properties, such as substantially identical metal and via construction and overlay and underlay density. In one example, the wiring routes may be isolated either vertically, horizontally, or both from other wiring routes on the IC chip. In one example of a first distribution level of clock fanout and referring to FIG. 1, a balanced routing is provided from clock source **12** to a set of any number of first-level buffer circuits (1L-buffers) **14**, e.g., 1L-buffers **14a** and **14b**. Wiring from an output node of clock source **12** to an input node of each of 1L-buffers **14a** and **14b** is made with substantially identical wiring routes of equal lengths. In particular, all wiring routes between clock source **12** and 1L-buffers **14a** and **14b** have substantially identical physical and electrical properties, such as substantially identical metal and via construction and overlay and underlay density. In one example, the physical and electrical properties being the same in each of the distribution segments in a given distribution level may provide the same load characteristics to each path between a clock source and any driven logic elements connected at the end of the path or along the path. As shown in the exemplary embodiment of FIG. 1, a plurality of first-level (1L) segments **16** may be the substantially identical wiring routes between clock source **12** and 1L-buffers **14a** and **14b**.

Each buffer in the first set of buffer circuits, such as 1L-buffers **14a** and **14b**, is connected to a second set of any number of clock tree buffer circuits, again by use of balanced routing structures of substantially identical length and construction. Each buffer in the first set of buffer circuits, such as 1L-buffers **14a** and **14b**, is wired to the same number of routing wires and loads. Referring to FIG. 1, in one example of a second distribution level of clock fanout, a certain bal-

anced routing is provided from each 1L-buffer **14** to a set of any number of second-level buffer circuits (2L-buffers) **18**, e.g., 1L-buffer **14a** may be routed to 2L-buffers **18a** and **18b** and 1 L-buffer **14b** may be routed to 2L-buffers **18c** and **18d**. All wiring routes between each 1L-buffers **14a** and **14b** and 2L-buffers **18a**, **18b**, **18c**, and **18d** have substantially identical physical and electrical properties, such as substantially identical length, metal and via construction, and overlay and underlay density. In one example of second-level distribution segments, a plurality of second-level (2L) segments **20** may be the substantially identical wiring routes between 1L-buffer **14a** and its 2L-buffers **18a** and **18b** and 1L-buffer **14b** and its 2L-buffers **18c** and **18d**. In another example, distribution segments in the same distribution level may have the same physical and electrical properties as each other, but differ from the physical and electrical properties of distribution segments in a different distribution level.

Although only two levels of buffering are described above and shown in FIG. 1, any number of levels of buffering may be provided in like manner, i.e., each level with wiring routes of substantially identical physical and electrical properties, substantially identical loading, and substantially identical load distribution. The Nth level of buffering may be the “leaf” end of the clock tree, i.e., a logic leaf distribution level. Each leaf clock buffer, such as 2L-buffers **18a**, **18b**, **18c**, and **18d** in the example of FIG. 1, drives an identical load. The load may be formed of a wire component of known construction. The circuit load may be formed of, for example, one or more active loads, one or more dummy registers, one or more tuning elements, or any combination thereof. Details of example loads are found with reference to FIGS. 2 through 8. In another example, not shown, logic leaf elements may be connected along the clock distribution network path so long as each path includes a logic element or dummy element having the same load as the others in substantially the same physical location in the network.

In one example of the Nth level of buffering and referring to FIG. 1, 3L distribution segments **24**, **28**, **32**, and **36** connect the 2L-buffers **18a**, **18b**, **18c**, and **18d** of the previous distribution level, respectively to any number of logic leaf elements (i.e., loads). In this example, 2L-buffers **18a**, **18b**, **18c**, and **18d** each drive the same number of loads, respectively. More specifically, 2L-buffer **18a** may be driving a set of multiple logic leaf (LL) elements **22**, such as LL elements **22a** through **22f**; 2L-buffer **18b** may be driving a set of multiple LL elements **26**, such as LL elements **26a** through **26f**; 2L-buffer **18c** may be driving a set of multiple LL elements **30**, such as LL elements **30a** through **30f**; and 2L-buffer **18d** may be driving a set of multiple LL elements **34**, such as LL elements **34a** through **34f**. Detail A of FIG. 1 shows that each instance of LL elements **22**, **26**, **30**, and **36** includes a logic leaf (LL) connection node **40** into which 2L-buffers **18a**, **18b**, **18c**, and **18d** are connected via respective 3L segments **24**, **28**, **32**, and **36**. Each buffer circuit of the logic leaf distribution level, which may be the Nth level of buffering, is connected to an equal number of LL connection nodes. In the example shown in FIG. 1, each of 2L-buffers **18a**, **18b**, **18c**, and **18d** drive an equal number of LL elements **22**, **26**, **30**, and **36** respectively, and thus drive an equal number of LL connection nodes **40**.

Each logic leaf element may be, for example, any clocked logic element, such as, but not limited to, an element that is formed using a one-bit or multi-bit register structure. Examples of logic leaf elements are described with reference to FIGS. 2 through 8. In one example, a logic leaf element may be a dummy register that has the same loading characteristics as the other logic leaf elements in a distribution network.

The total load driven by each of 2L-buffers **18a**, **18b**, **18c**, and **18d**, respectively, are substantially equal to one another. Additionally, the distribution of the loads driven by each of 2L-buffers **18a**, **18b**, **18c**, and **18d**, respectively, are substantially equal to one another. Additionally, each load, such as each of LL elements **22**, **26**, **30**, or **36**, are substantially equal to one another. In one example, as shown in FIG. 1, the wiring from an output node of each 2L-buffer **18** to LL connection node **40** of each of LL elements **22**, **26**, **30**, or **36** is made with substantially identical wiring routes of equal lengths. In particular, all wiring routes between 2L-buffer **18a**, **18b**, **18c**, and **18d** and LL elements **22**, **26**, **30**, or **36**, respectively, have substantially identical physical and electrical properties, such as substantially identical length, metal and via construction, and overlay and underlay density. In one example of third-level distribution segments, a plurality of third-level (3L) segments **24**, **28**, **32**, and **36** may each have the same physical and electrical properties between 2L-buffer **18a**, **18b**, **18c**, and **18d** and LL elements **22**, **26**, **30**, or **36**, respectively. In an alternative embodiment, one or more of the distribution segments connecting each of buffer circuits **18a**, **18b**, **18c**, and **18d** may include connection to a plurality of logic leaf connection nodes (e.g., logic leaf connection node **40**). In this embodiment, the distance to each logic leaf connection node may vary, but is known, controlled, and can be modeled. Additionally, in such an example, each of buffer circuits **18a**, **18b**, **18c**, and **18d** would have the same multi-node logic leaf distribution segment such that each of the buffer circuits **18a**, **18b**, **18c**, and **18d** would drive the same load.

A clock distribution network, such as a clock distribution network **10**, provides the skeleton for the placement of logic leaf elements (i.e., loads), such as LL elements **22**, **26**, **30**, or **36**, into an IC chip. Details of example logic leaf elements, which may be the substantially equal loads that are driven by each of the leaf clock buffers, such as driven by each of 2L-buffers **18a**, **18b**, **18c**, and **18d**, are described with reference to FIGS. 2 through 8. In particular and by way of example, FIGS. 2 through 8 provide a set of example register structures having equal loading characteristics.

FIG. 2 illustrates a Q-bit register **200**, which is an example of a logic leaf element that may be connected to a clock distribution network, such as clock distribution network **10** of FIG. 1. Q-bit register **200** implements a register structure of multiple latches in order to form Q bits of storage that use a common clock. Q-bit register **200** may be designed to provide connection at selected points on the routing wire. In addition, Q-bit register **200** may be designed to minimize the impacts of across chip parametric variations across the register bits by use of any number of techniques, such as dummy devices in the layout (see FIGS. 4 and 5), inter-digitation of devices, or use of differential architectures.

FIG. 3 illustrates a dummy register **300**, which is an example of a dummy register for mimicking a logic leaf element that may be connected to a clock distribution network, such as clock distribution network **10** of FIG. 1. Dummy register **300** simulates the load of Q-bit register **200** that is attached to a leaf clock line and may be constructed of a disabled register (no data input or output) that has intact clock inputs or by another capacitive architecture. In one example, dummy register **300** includes one or more dummy load elements **310** (e.g., a capacitor).

FIG. 4 illustrates an M-bit register **400**, which is another example of a logic leaf element that may be connected to a clock distribution network, such as clock distribution network **10** of FIG. 1. M-bit register **400** provides a register structure that has fewer bits of storage (e.g., fewer latches) than Q-bit register **200** while still providing a clock capaci-



tance that is equivalent to the clock capacitance of Q-bit register **200** or dummy register **300**. In one example, M-bit register **400** may be constructed by disabling the data paths of Q minus M register bits of Q-bit register **200**, while leaving the clock loading intact. In another example, M-bit register **400** may include circuitry representing M bits and one or more dummy load elements **410**, such that the total load of M-bit register **400** is the same as the load of other logic leaf elements in the clock distribution network. In yet another example, the clock loading of an M-bit register **400** is the same as that of Q-bit register **200** by the combination of M register bits and a capacitive load that is equal to Q register bits minus M register bits.

FIG. **5** illustrates an N-bit register **500**, which is yet another example of a logic leaf element that may be connected to a clock distribution network, such as clock distribution network **10** of FIG. **1**. N-bit register **500** provides a register structure that has fewer bits of storage (e.g., fewer latches) than Q-bit register **200** and M-bit register **400** while still providing a clock capacitance that is equivalent to the clock capacitance of Q-bit register **200** or dummy register **300**. N-bit register **500** may be constructed by disabling the data paths of Q minus N register bits of Q-bit register **200**, while leaving the clock loading intact. In another example, N-bit register **500** may include circuitry representing N bits and one or more dummy load elements **510**, such that the total load of N-bit register **500** is the same as the load of other logic leaf elements in the clock distribution network. In yet another example, the clock loading of an N-bit register **500** is substantially equal to that of Q-bit register **200** by the combination of N register bits and a capacitive load that is substantially equal to Q register bits minus N register bits.

FIG. **6** illustrates a tuning element **600**, which is yet another example of a logic leaf element that may be connected to a clock distribution network, such as clock distribution network **10** of FIG. **1**. Tuning element **600** is formed of an array of capacitors, such as tuning capacitors (C-tunes) **610**, which may be selectively connected or disconnected in order to tune the capacitance on the wiring routes. In another example, tuning element **600** may include one or more varactors for controlling capacitance. In one example of a use of a varactor, a switch may not be necessary. The selection mechanism of tuning element **600** may be, for example, but is not limited to, fuse technology, eFuse technology, anti-fuse technology, or any combinations thereof. The selection of the capacitance of tuning element **600** via the selection C-tunes **610** (e.g., C-tune **610a**, **610b**, **610c**, **610d**, and **610e**) may be programmable. For example, tuning element **600** may be mask programmable, electrically programmable at final chip test, or electrically programmable throughout the IC operational lifetime. In one example, a tuning element (e.g., tuning element **600**) may be connected to a logic leaf connection node, the tuning element having the same load as each of the other logic leaf elements connected in the distribution network. In another example, a tuning element (e.g., tuning element **600**) may be connected to a logic leaf connection node of each of the last stage buffer circuits (e.g., buffer circuits **18a**, **18b**, **18c**, and **18d** of FIG. **1**) and not have the same load as each of the other logic leaf elements connected in the distribution network. In such an example, the impact of the differing load characteristics would impact each of the logic leaf distribution networks of the last stage buffer circuits equally.

FIG. **7** illustrates a Q-bit register **700**, which is yet another example of a logic leaf element that may be connected to a clock distribution network, such as clock distribution network **10** of FIG. **1**. Q-bit register **700** implements a register structure of multiple latches in order to form Q bits of storage

that use a common clock. In one example, Q-bit register **700** includes latches **710**, **720**, **730**, **740**, **750**, **760**. Q-bit register **700** may be designed to provide connection at selected points on the routing wire. Q-bit register **700** may be substantially identical to Q-bit register **200** of FIG. **2** except that Q-bit register **700** includes register bits that are defined as “reserved” (e.g., latches **750** and **760**). In one example, reserved bits may be extraneous bits to a particular logic design integrated with the clock distribution network. A reserve bit may be used after initial integration (e.g., in late design phase, after physical manufacturing of the integrated circuit, for implementation of logic changes which require additional sequential elements) in order to ensure that modifications to the logic design can be implemented even after a clock tree network is fully populated. In one example, a reserve bit may be utilized to modify logic design (which may otherwise require difficult redesign of the logic design and/or clock network) without disturbing the balanced clock distribution network. The number of the reserved bits may vary based on, for example, but not limited to, the type of applications or logic maturity level. In one example, Q-bit register **700** of FIG. **7** includes two register bits (latches **750** and **760**) that are defined as reserved. Other register configurations may similarly include reserved register bits. For example, M-bit register **400** of FIG. **4** and N-bit register **500** of FIG. **5** may each include one or more reserved register bits. In another example, the number of reserved bits may vary amongst Q-bit, M-bit, and/or N-bit registers in a particular design.

FIG. **8** illustrates a clock divider circuit **800**, which is yet another example of a logic leaf element that may be connected to a clock distribution network, such as clock distribution network **10** of FIG. **1**. While the clock tree structure that is described with reference to clock distribution network **10** of FIG. **1** may be applied to single or multiple clock trees, an alternative embodiment of the register structure, such as those shown in FIGS. **2** through **7**, allows for reduction of the number of clocks propagated in systems by providing a division of a clock source, such as provided by clock source **12**. Clock divider circuit **800** of FIG. **8** is one example of this alternative register structure that provides a division of a clock.

Referring again to FIG. **8**, a clock-divided register, such as clock divider circuit **800**, may be connected to the leaf clock line. In one example, clock divider circuit **800** may include two groups of sequential elements (e.g., latches) and a load capacitor (not shown) for the clock input in order to emulate the load of a Q bit register, such as Q-bit register **200** of FIG. **2**. The size of the clock divider may be determined by the number of latches chosen to achieve a desired divide value. A first group of sequential elements is used to implement a divider circuit, e.g., a clock divider **810**, which divides the incoming clock by a known factor. Clock divider **810** may be implemented in any number of known architectures including, but not limited to, an LFSR structure and a ripple structure. Within clock divider circuit **800**, a set of sequential elements, such as latches, is provided within a divided clock domain **812**. All latches within divided clock domain **812** are fed by the divided clock generated within clock divider **810** of clock divider circuit **800**. The divided clock is therefore local to clock divider circuit **800**. In one example, the sequential elements of divided clock domain **812** may not load the clock input to clock divider circuit **800**. In such an example, it may be necessary to add one or more dummy load elements to clock divider circuit **800** to ensure that the load on the logic

leaf connect node to which clock divider circuit 800 is connected remains the same as other logic leaf elements in the clock distribution network.

Q-bit register 200 of FIG. 2, dummy register 300 of FIG. 3, M-bit register 400 of FIG. 4, N-bit register 500 of FIG. 5, tuning element 600 of FIG. 6, Q-bit register 700 of FIG. 7, and clock divider circuit 800 of FIG. 8, may be one example of a set of loads of a certain desired load value that are substantially equal one to another. As discussed above, in some examples, a tuning element (e.g., tuning element 600 of FIG. 6) may have a different load characteristic as long as the tuning element is properly placed in a balanced manner within the last stage of distribution. Q-bit register 200, dummy register 300, M-bit register 400, N-bit register 500, and tuning element 600 may be, for example, available to an integrated circuit designer within a library of components during the design phase of a clock distribution network, such as clock distribution network 10 of FIG. 1.

Referring again to FIGS. 1 through 8, a clock distribution network, such as clock distribution network 10 of FIG. 1, may be formed of any combination of substantially equal logic leaf element (i.e., loads), such as any combination of one or more Q-bit registers 200, dummy registers 300, M-bit registers 400, N-bit registers 500, tuning element 600, Q-bit register 700, and clock divider circuit 800. In particular, Q-bit registers 200, dummy registers 300, M-bit registers 400, N-bit registers 500, tuning element 600, Q-bit register 700, and clock divider circuit 800 may be one example collection of logic leaf element (i.e., loads) that have predetermined substantially equal loading characteristics. By way of example, Tables 1, 2, and 3 below provide example ways in which the loads of the Nth level of buffering within a clock distribution network, such as clock distribution network 10 of FIG. 1, are assigned in a balanced manner. In particular, in the examples of Tables 1, 2, and 3 each group of LL elements 22, 26, 30, and 34 may include, for example, but not limited to, at least one tuning element 600 along with any combination of Q-bit registers 200, dummy registers 300, M-bit registers 400, N-bit registers 500, Q-bit register 700, and/or clock divider circuit 800. In one example, selection of the specific load that is associated with each logic leaf element, the number of bits in a register, the physical placement of the logic leaf elements, and/or tuning load requirements may be determined from an analysis of a logic design to be integrated with and clocked by the clock distribution network.

TABLE 1

First example set of loads of the Nth level of buffering			
LL element	Load	LL element	Load
First Leaf		Second Leaf	
LL element 22a	Dummy register 300	LL element 26a	Dummy register 300
LL element 22b	Dummy register 300	LL element 26b	Dummy register 300
LL element 22c	Dummy register 300	LL element 26c	Dummy register 300
LL element 22d	Tuning element 600	LL element 26d	Tuning element 600
LL element 22e	Dummy register 300	LL element 26e	Dummy register 300
LL element 22f	Dummy register 300	LL element 26f	Dummy register 300
Third Leaf		Fourth Leaf	
LL element 30a	Dummy register 300	LL element 34a	Dummy register 300

TABLE 1-continued

First example set of loads of the Nth level of buffering			
LL element	Load	LL element	Load
LL element 30b	Dummy register 300	LL element 34b	Dummy register 300
LL element 30c	Dummy register 300	LL element 34c	Dummy register 300
LL element 30d	Tuning element 600	LL element 34d	Tuning element 600
LL element 30e	Dummy register 300	LL element 34e	Dummy register 300
LL element 30f	Dummy register 300	LL element 34f	Dummy register 300

TABLE 2

Second example set of loads of the Nth level of buffering			
LL element	Load	LL element	Load
First Leaf		Second Leaf	
LL element 22a	Q-bit register 200	LL element 26a	Dummy register 300
LL element 22b	Dummy register 300	LL element 26b	N-bit register 500
LL element 22c	N-bit register 500	LL element 26c	Q-bit register 700
LL element 22d	Tuning element 600	LL element 26d	Tuning element 600
LL element 22e	Q-bit register 200	LL element 26e	Dummy register 300
LL element 22f	M-bit register 400	LL element 26f	Q-bit register 200
Third Leaf		Fourth Leaf	
LL element 30a	Q-bit register 200	LL element 34a	Q-bit register 200
LL element 30b	Q-bit register 700	LL element 34b	M-bit register 400
LL element 30c	N-bit register 500	LL element 34c	N-bit register 500
LL element 30d	Tuning element 600	LL element 34d	Tuning element 600
LL element 30e	M-bit register 400	LL element 34e	Dummy register 300
LL element 30f	Q-bit register 200	LL element 34f	Clock divider circuit 800

TABLE 3

Third example set of loads of the Nth level of buffering			
LL element	Load	LL element	Load
First Leaf		Second Leaf	
LL element 22a	Q-bit register 200	LL element 26a	Q-bit register 200
LL element 22b	Q-bit register 200	LL element 26b	Q-bit register 200
LL element 22c	Q-bit register 200	LL element 26c	Q-bit register 200
LL element 22d	Tuning element 600	LL element 26d	Tuning element 600
LL element 22e	Q-bit register 200	LL element 26e	Q-bit register 200

TABLE 3-continued

<u>Third example set of loads of the Nth level of buffering</u>			
LL element	Load	LL element	Load
LL element 22f	Q-bit register 200	LL element 26f	Q-bit register 200
Third Leaf		Fourth Leaf	
LL element 30a	Q-bit register 200	LL element 34a	Q-bit register 200
LL element 30b	Q-bit register 200	LL element 34b	Q-bit register 200
LL element 30c	Q-bit register 200	LL element 34c	Q-bit register 200
LL element 30d	Tuning element 600	LL element 34d	Tuning element 600
LL element 30e	Q-bit register 200	LL element 34e	Q-bit register 200
LL element 30f	Q-bit register 200	LL element 34f	Q-bit register 200

In one example, substantially identical physical and electrical properties, loading, and load distribution is maintained from one buffer circuit to another across each clock fanout distribution level and across the logic leaf distribution level, such as shown in Tables 1, 2, and 3, of the clock distribution network, such as clock distribution network **10** of FIG. **1**, in order to form a structurally balanced homogeneous topology. In one aspect, this includes each distribution segment and/or buffer circuit in a given distribution level having the same load characteristics as other distribution segments and/or buffer circuits in that distribution level. In one example, this may allow the arrival time and skew of multiple clock signals at the output of the final or Nth distribution level of the clock distribution network to be substantially identical.

A clock distribution network, such as clock distribution network **10** of FIG. **1**, is not limited to the Nth level loading that is shown in Tables 1, 2, and 3. Tables 1, 2, and 3 are exemplary only. Additionally, a clock distribution network, such as clock distribution network **10** of FIG. **1**, is not limited to the substantially equal logic leaf element (i.e., loads) that are described in FIGS. **2** through **8**. Q-bit register **200** of FIG. **2**, dummy register **300** of FIG. **3**, M-bit register **400** of FIG. **4**, N-bit register **500** of FIG. **5**, tuning element **600** of FIG. **6**, Q-bit register **700** of FIG. **7**, and clock divider circuit **800** of FIG. **8** are exemplary only. Multiple sets or groups of clocked logic elements, such as groups of latches to form register structures, of any width may be provided as long as the clock capacitance that is associated with any structure that is connected to the clock tree is equivalent. Additionally, the grouping may occur for latches that are closely associated by logic unit, logic cone, or recognized parallelism (data paths) and are assigned as tightly together as possible.

Furthermore, the clock fanout distribution levels of a clock distribution network, such as clock distribution network **10** of FIG. **1**, are not limited to clock tree buffer circuits only, such as 1L-buffers **14a** and **14b** or 2L-buffers **18a**, **18b**, **18c**, and **18d** only. Alternatively, the clock fanout distribution levels may include a combination of clock tree buffer circuits and other logic elements, such as logic gates, or macro functions, such as memory arrays, that are commonly found in IC design as long as the loading and wiring routes of each distribution level are maintained substantially identical.

A clock distribution network, such as clock distribution network **10** of FIG. **1**, may be integrated with any logic design. The particular number of circuit elements to be clocked in a given logic design may dictate how a clock

distribution network will be constructed. However, an example clock distribution network of the present disclosure will have a physical and electrical structure that inherently balances load across all paths from a clock source to logic leaf elements, as described above. A given logic design may also dictate multiple clock distribution networks to propagate a clock signal from multiple clock sources, respectively. The following description illustrates, with reference to FIG. **9**, a method **900** of integrating a clock distribution network and a logic design in an integrated circuit. It will be understood from the disclosure herein that multiple clock distribution networks may be integrated with a logic design.

At step **910**, a logic design having multiple logic elements to be clocked is provided. Example logic elements include, but are not limited to, a latch, a register having multiple logic elements, a datapath element, a core functional block, a memory array (e.g., RAM), a dynamic logic element, and any combinations thereof. In one example, where a memory array or a macro function is to be connected to a logic leaf connection node, the clock input for the element may be configured to provide the desired load characteristics of other logic leaf elements connected to the same clock distribution network.

As described above, a clock distribution network (e.g., clock distribution network **10** of FIG. **1**) will have a number of logic leaf connection nodes for connection of logic leaf elements. Each logic leaf connection node will have the same electrical load connected thereto. At step **912**, a desired load value for each logic leaf connection node is determined. In one example, a desired load value may be determined via an analysis of the circuit requirements of the logic design. A minimum number of logic leaf connection nodes may be determined that will satisfy the total number of logic elements in the design. In another example, extra capacity may be built into the number of logic leaf connection nodes for flexibility in the integration of the logic design and the clock distribution network.

At step **914**, the logic elements of the logic design are grouped together in register structures that have the same load characteristics. The load characteristics are set to the desired load value. In one example, the determination of the desired load value and the grouping of the logic elements in register structures may occur together so as to define the minimum load value to accommodate all of the logic elements of the logic design. In another example, the grouping of logic elements may occur after a number of logic leaf connect nodes and a desired load value are determined. In an alternate embodiment, determining the desired load value may be accomplished by determining how many bits will be required in each register structure to accommodate the logic design. The desired load value will be equivalent to the load that would be associated with the circuitry representing the desired number of bits (e.g., the preferred bit width of an ideal register structure). A bit width of a register structure may be determined to allow for variation in the logic leaf elements that can be assigned to a clock distribution network. For example, logic elements may be grouped into logic leaf elements (e.g., registers) such that the logic leaf element includes Q-bits (see FIG. **2** discussed above). In another example, logic elements may be grouped into a register that includes an number of bits less than Q bits. Such a register may also include a dummy load to bring the load of the register to the same value as the Q bit register, which will have the desired load that was determined above. In yet another example, logic elements may be grouped into a logic leaf element such that extraneous bits are included in the register for future use. Other variations of grouping will be evident from the description herein. For example, one or more latches

or other logic elements of the logic design, may be grouped together to form Q-bit register, such as Q-bit register **200** of FIG. **2**; an M-bit register, such as M-bit register **400** of FIG. **4**, an N-bit register, such as N-bit register **500** of FIG. **5**; a Q-bit register with reserved bits, such as Q-bit register **700** of FIG. **7**; and/or a clock divider circuit, such as clock divider circuit **800** of FIG. **8** that each have the same load as the desired load value of step **912**.

As discussed above, the grouping of clocked logic elements, such as latches, may involve auditing the logic design, determining a preferred bit width for the register structures, assigning multiple clocked logic elements to a corresponding respective register structure such that the number of clocked logic elements assigned to each of the register structures is less than or equal to the preferred bit width, and assigning one or more dummy load elements and/or one or more reserve bits to any of the multiple register structures that have less than the desired load such that each of the multiple register structures has the desired load. In another example, the grouping may take into account how closely associated each logic element of a logic design is to another logic element in the design (e.g., logic elements that are in the same logic unit, logic cone, or recognized parallelism (data paths)). Such logic elements may be grouped into the same or physically close logic leaf elements (e.g., registers). The number of dummy elements, the size of each register structure, the usage of tuning elements, and/or the number of reserve bits may be determined taking into account the level of distribution of the logic elements of the logic design into the register structures of the clock distribution network. In one example, where a macro function may truncate a particular branch of a distribution network, the number of reserve bits and dummy registers may be increased to allow for additional flexibility.

The physical size of the target integrated circuit may be taken into account during any of the determination of the desired load value, the number of logic leaf elements, the number of logic elements to group into a logic leaf element, the specific grouping of logic element into a logic leaf element, generation of reserve bits, the depth (e.g., number of distribution levels) to be implemented in the network, architecture of clock divider, and any combinations thereof. Design information (e.g., IC synthesis library elements) for a logic design and a clock distribution network may be stored in one or more databases and accessed during the method.

At step **916**, each register structure (i.e., logic leaf element) is assigned to a corresponding logic leaf connection node. In one example, any combination of one or more Q-bit registers **200** of FIG. **2**, M-bit registers **400** of FIG. **4**, N-bit registers **500** of FIG. **5**, Q-bit registers **700** of FIG. **7**, and clock divider circuits **800** of FIG. **8** may be connected to LL connection nodes **40** of LL elements **22**, **26**, **30**, and/or **34** of clock distribution network **10** of FIG. **1**. Examples of such connections are shown in Tables 1, 2, and 3.

Optionally, at step **918**, a dummy register that has the same load as the desired load value of step **912** may be connected to at least one logic leaf connection node that is not connected to a register structure having one or more logic elements grouped therein. In one example, dummy register **300** of FIG. **3**, which has the same load as the desired load value of step **912**, is connected to at least one of the multiple LL connection nodes **40** of LL elements **22**, **26**, **30**, and/or **34** of clock distribution network **10** of FIG. **1**, as shown in Table 2. In another example, a dummy register, such as dummy register **300**, is connected to all logic leaf connection nodes that are not otherwise connected to a logic leaf element. In doing so, the load distribution across the entire clock distribution network may be maintained.

Optionally, at step **920**, a tuning element that has a chosen capacitance and granularity may be connected to a logic leaf connection node that is not connected to a register structure. In one example, tuning element **600** of FIG. **6**, which has the same load as the desired load value of step **912**, is connected to one of the multiple LL connection nodes **40** of LL elements **22**, **26**, **30**, and/or **34** of clock distribution network **10** of FIG. **1**, as shown in Tables 1, 2, and 3. In another example, a tuning element (e.g., tuning element **600** of FIG. **6**) may be connected to a connection node **40** of a distribution segment of each of a final stage buffer circuits (e.g., buffer circuits **18a**, **18b**, **18c**, and **18d**), each tuning element having the same tuning load so that each buffer circuit is impacted with the same load characteristic.

In an alternative embodiment, the assigning of register structures to logic leaf connect nodes in a particular clock distribution network may include the generation of a schematic representation of the clock distribution network having proper placement of register structures in parallel with the generation of a physical skeleton design for the integrated circuit. In one example, the clock distribution network schematic representation may be synthesized utilizing known rules to limit and/or balance circuit loading and net length with desired clock latency specifications for a particular IC design. During schematic generation dummy registers placed in locations in the ideal clock distribution network may be replaced with registers having logic elements of the logic design, and vice versa, so long as the load at each logic leaf connection node remains the same across the network. Timing verification may be implemented on the schematic representation of the clock distribution network. If the network schematic fails timing verification, the process may repeat at step **912**. Upon completion of clock distribution network schematic generation and generation of a physical IC skeleton, the physical design of the IC may take place with the positioning of each logic leaf element as set forth in the schematic representation (e.g., placement of register structures, tie off of unused register bits and/or reserve bits, placement of combinational logic, routing of the logic). In one aspect, the clock distribution routing may be fixed early in the process requiring no global routing of the clock tree at the time of IC physical design.

In another example, an integrated clock distribution network may be analyzed to determine timing factors. If tuning is required, one or more tuning elements that were placed in the clock distribution network, may be adjusted to add or subtract capacitance from select nodes of the network.

A logic synthesis process, such as method **900**, may optionally include a macro function, such as memory array, that impacts one or more distribution levels of the clock distribution network. Therefore, method **900** may optionally include a process for placing the macro function following a buffer circuit of one of the distribution levels such that the load characteristics of the distribution level that terminates in the buffer circuit are not impacted by the placement of the macro function. Additionally, the capacitance of the macro function is set to balance the load on the clock distribution network to which it is connected.

While in one embodiment, the clock tree routing is implemented on a preferred upper level metallurgy that is not truncated, in many cases, macro functions, such as memory arrays, may truncate many levels of metallurgy on the integrated circuit. Even if the macro function does not truncate the clock tree net, it may interfere with planned placement of one or more clock buffers in the tree. The clock tree structure, such as clock distribution network **10** of FIG. **1**, allows truncation of any branch of the tree pursuant to the placement of

15

a truncating macro function. Truncation of the branch is strictly controlled in the design process, with connection of the driver that is to drive the truncated branch preserved in order to keep the capacitive loading on the tree intact. Should the macro cell itself require connection to the clock tree, the macro cell is designed with a connect point that mimics the register connect point, such that the load on the tree is maintained.

It is to be noted that the aspects and embodiments described herein may be conveniently implemented using a machine (e.g., a general purpose computing device) programmed according to the teachings of the present specification, as will be apparent to those of ordinary skill in the computer art. Appropriate software coding can readily be prepared by skilled programmers based on the teachings of the present disclosure, as will be apparent to those of ordinary skill in the software art.

Such software may be a computer program product that employs a machine-readable medium. A machine-readable medium may be any medium that is capable of storing and/or encoding a sequence of instructions for execution by a machine (e.g., a general purpose computing device) and that causes the machine to perform any one of the methodologies and/or embodiments described herein. Examples of a machine-readable medium include, but are not limited to, a magnetic disk (e.g., a conventional floppy disk, a hard drive disk), an optical disk (e.g., a compact disk "CD", such as a readable, writeable, and/or re-writable CD; a digital video disk "DVD", such as a readable, writeable, and/or rewritable DVD), a magneto-optical disk, a read-only memory "ROM" device, a random access memory "RAM" device, a magnetic card, an optical card, a solid-state memory device (e.g., a flash memory), an EPROM, an EEPROM, and any combinations thereof. A machine-readable medium, as used herein, is intended to include a single medium as well as a collection of physically separate media, such as, for example, a collection of compact disks or one or more hard disk drives in combination with a computer memory.

In one aspect, in contrast to prior art clock tree synthesis processes that result in both potential clock skew and early or late data arrival times as factors in meeting timing requirements, an exemplary clock distribution network, structure, and method provides a mechanism for removing clock tree skew that is related to both physical capacitance/resistance mismatches that are associated with different net topologies and mismatches in across chip parametric variations that result from random placement of ASIC clock driver cells that are not designed to minimize across chip parametric variations. As a result, timing uncertainty is reduced with regard to the data arrival early/late variability and, thus, a superior design for high frequency function is provided.

Exemplary embodiments have been disclosed above and illustrated in the accompanying drawings. It will be understood by those skilled in the art that various changes, omissions and additions may be made to that which is specifically disclosed herein without departing from the spirit and scope of the present invention.

What is claimed is:

1. A clock distribution network of an integrated circuit, the clock distribution network comprising:

a clock source;

a first distribution level of clock fanout including a first set of buffer circuits and a first set of distribution segments, each of said first plurality of distribution segments connecting said clock source to a corresponding respective one of said first set, each of said first plurality of distribution segments having substantially the same physical

16

and electrical properties, each buffer circuit of said first set having substantially the same load;

a second distribution level of clock fanout including a second set of buffer circuits and a second plurality of distribution segments, each of said second plurality of distribution segments connecting a buffer circuit of said first set to a buffer circuit of said second set, each buffer circuit of said first set being connected to an equal number of buffer circuits of said second set, each of said second plurality of distribution segments having substantially the same load, and each buffer circuit of said second set having substantially the same load;

a logic leaf distribution level including one or more logic leaf connection nodes and one or more logic leaf distribution segments, each of said one or more logic leaf distribution segments connecting a buffer circuit of said second set to a node of said one or more logic leaf connection nodes, each buffer circuit of said second set being connected to an equal number of said one or more logic leaf connection nodes and driving substantially the same load; and

a plurality of logic leaf elements each connected to a corresponding respective one of said one or more of logic leaf connection nodes, each of said plurality logic leaf elements having a first load, wherein at least one of said plurality of logic leaf elements includes a logic register having a first number of bits providing said first load.

2. A clock distribution network according to claim 1, wherein said second plurality of distribution segments include a third distribution level of clock fanout.

3. A clock distribution network according to claim 1, wherein each of said one or more logic leaf distribution segments has substantially the same physical and electrical properties.

4. A clock distribution network according to claim 1, wherein at least one of said one or more logic leaf distribution segments connected to each of said second set of buffer circuits includes a plurality of said one or more logic leaf connection nodes, wherein each of said at least one of said one or more logic leaf distribution segments provides the same load to each of said second set of buffer circuits.

5. A clock distribution network according to claim 1, wherein at least one of said plurality of logic leaf elements includes a dummy register including one or more dummy load elements providing said first load.

6. A clock distribution network according to claim 1, wherein one or more of said first number of bits are a reserve bit.

7. A clock distribution network according to claim 1, wherein at least one of said plurality of logic leaf elements includes a logic register having:

a second number of bits providing a second load; and

one or more dummy load elements providing a third load, wherein a combination of said second and third loads equals said first load.

8. A clock distribution network according to claim 1, wherein at least one of said plurality of logic leaf elements includes one or more load tuning elements, wherein said one or more load tuning elements has a first configuration providing said first load and a second configuration providing a second load to a corresponding respective one of said one or more logic leaf connection nodes.

9. A clock distribution network according to claim 1, wherein at least one of said plurality of logic leaf elements includes a register configured as a clock divider circuit.

10. A clock distribution network of an integrated circuit, the clock distribution network comprising:

17

a clock source;

a first distribution level of clock fanout including a first set of buffer circuits and a first set of distribution segments, each of said first plurality of distribution segments connecting said clock source to a corresponding respective one of said first set, each of said first plurality of distribution segments having substantially the same physical and electrical properties, each buffer circuit of said first set having substantially the same load;

a second distribution level of clock fanout including a second set of buffer circuits and a second plurality of distribution segments, each of said second plurality of distribution segments connecting a buffer circuit of said first set to a buffer circuit of said second set, each buffer circuit of said first set being connected to an equal number of buffer circuits of said second set, each of said second plurality of distribution segments having substantially the same load, each buffer circuit of said second set having substantially the same load;

a logic leaf distribution level including a plurality of logic leaf connection nodes and a third plurality of distribution segments, each of said third plurality of distribution segments connecting a buffer circuit of said second set to a node of said plurality of logic leaf connection nodes, each buffer circuit of said second set being connected to an equal number of said plurality of logic leaf connection nodes, each of said third plurality of distribution segments having substantially the same physical and electrical properties; and

a plurality of logic leaf elements each connected to a corresponding respective one of said plurality of logic leaf

18

connection nodes, each of said plurality of logic leaf elements having a first load, wherein at least one of said plurality of logic leaf elements includes a dummy register including one or more dummy load elements providing said first load, wherein at least one of said plurality of logic leaf elements includes a logic register having a first number of bits providing said first load.

**11.** A clock distribution network according to claim **10**, wherein said second plurality of distribution segments include a third distribution level of clock fanout.

**12.** A clock distribution network according to claim **10**, wherein one or more of said first number of bits are a reserve bit.

**13.** A clock distribution network according to claim **10**, wherein at least one of said plurality of logic leaf elements includes a logic register having:

a second number of bits providing a second load; and  
 one or more dummy load elements providing a third load,  
 wherein a combination of said second and third loads equals said first load.

**14.** A clock distribution network according to claim **10**, wherein at least one of said plurality of logic leaf elements includes one or more load tuning elements, wherein said one or more load tuning elements have a first configuration providing said first load and a second configuration providing a second load to a corresponding respective one of said plurality of logic leaf connection nodes.

**15.** A clock distribution network according to claim **10**, wherein at least one of said plurality of logic leaf elements includes a register configured as a clock divider circuit.

\* \* \* \* \*