



US007501951B2

(12) **United States Patent**  
**Maruca et al.**

(10) **Patent No.:** **US 7,501,951 B2**  
(45) **Date of Patent:** **Mar. 10, 2009**

(54) **SYSTEMS AND METHODS FOR IDENTIFYING AND COLLECTING BANNED WASTE**

5,959,568	A *	9/1999	Woolley	342/42
6,191,691	B1	2/2001	Serrault et al.	
6,206,282	B1	3/2001	Hayes, Sr. et al.	
6,448,898	B1	9/2002	Kasik	
6,520,544	B1	2/2003	Mitchell et al.	
6,690,402	B1	2/2004	Waller et al.	
6,759,959	B2	7/2004	Wildman	
2002/0105424	A1	8/2002	Alicot et al.	

(75) Inventors: **Dominic Maruca**, Holliston, MA (US);  
**Jerry Leone**, Victor, NY (US); **Nancy Edwards Cronin**, Jericho, VT (US);  
**John A. Kintzer**, Waterbury, VT (US)

(73) Assignee: **Casella Waste Systems, Inc.**, Rutland, VT (US)

(Continued)

(\* ) Notice: Subject to any disclaimer, the term of this patent is extended or adjusted under 35 U.S.C. 154(b) by 357 days.

FOREIGN PATENT DOCUMENTS

EP 0905057 A1 3/1999

(21) Appl. No.: **11/515,805**

(Continued)

(22) Filed: **Sep. 6, 2006**

(65) **Prior Publication Data**

US 2008/0061977 A1 Mar. 13, 2008

*Primary Examiner*—Van T. Trieu  
(74) *Attorney, Agent, or Firm*—Wilmer Cutler Pickering Hale and Dorr LLP

(51) **Int. Cl.**  
**G08B 13/14** (2006.01)

(52) **U.S. Cl.** ..... **340/572.1; 340/572.8**

(58) **Field of Classification Search** ..... 340/572.1,  
340/572.4, 572.8, 568.1, 539.1, 539.13;  
235/384, 385, 492; 705/28; 701/207

See application file for complete search history.

(57) **ABSTRACT**

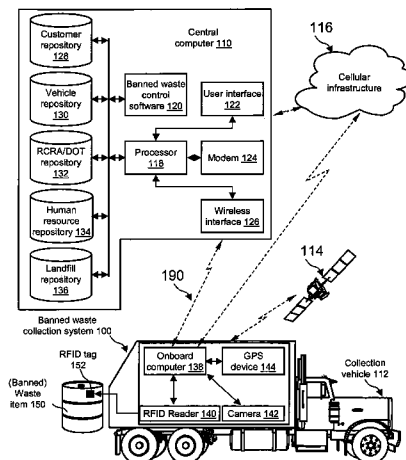
Systems and methods for authorizing a waste item to be removed from a site are disclosed. In one embodiment, a waste collection vehicle includes a reader configured to obtain identification information from an identification tag associated with the waste item. A transceiver associated with the vehicle is configured to: receive the identification information from the reader, wirelessly transmit the identification information to a remote computer for processing, and wirelessly receive an indication of whether the waste item should be collected and removed by the waste collection. The received indication is based on at least one hazardous characteristic associated with the identified waste item, a determination that the waste collection vehicle is authorized to collect the waste item having the at least one hazardous characteristic, and a determination that a driver of the waste collection vehicle is authorized to collect the waste item having the at least one hazardous characteristic.

(56) **References Cited**

U.S. PATENT DOCUMENTS

5,014,206	A	5/1991	Scribner et al.	
5,121,853	A	6/1992	Edelhoff et al.	
5,326,939	A	7/1994	Schafer et al.	
5,340,968	A	8/1994	Watanabe et al.	
5,392,926	A	2/1995	Schafer et al.	
5,565,846	A	10/1996	Geiszler et al.	
5,774,876	A *	6/1998	Woolley et al.	705/28
5,804,810	A *	9/1998	Woolley et al.	235/492
5,837,945	A	11/1998	Cornwell et al.	
5,892,441	A *	4/1999	Woolley et al.	340/539.26
5,947,256	A	9/1999	Patterson	

**20 Claims, 2 Drawing Sheets**



# US 7,501,951 B2

Page 2

---

## U.S. PATENT DOCUMENTS

2002/0154915 A1 10/2002 Bullock et al.  
2002/0196150 A1 12/2002 Wildman  
2003/0067381 A1 4/2003 Mitchell et al.  
2003/0112155 A1 6/2003 Landre et al.  
2004/0004119 A1 1/2004 Baldassari et al.  
2004/0027243 A1 2/2004 Carrender  
2004/0046672 A1 3/2004 Kasik et al.  
2004/0129781 A1 7/2004 Kreiner et al.

2004/0133484 A1 7/2004 Kreiner et al.  
2004/0153379 A1 8/2004 Joyce et al.  
2004/0178264 A1 9/2004 Linton et al.  
2006/0251498 A1\* 11/2006 Buzzoni et al. .... 414/139.9

## FOREIGN PATENT DOCUMENTS

EP 0760985 B1 3/2000  
EP 1477430 A1 11/2004

\* cited by examiner

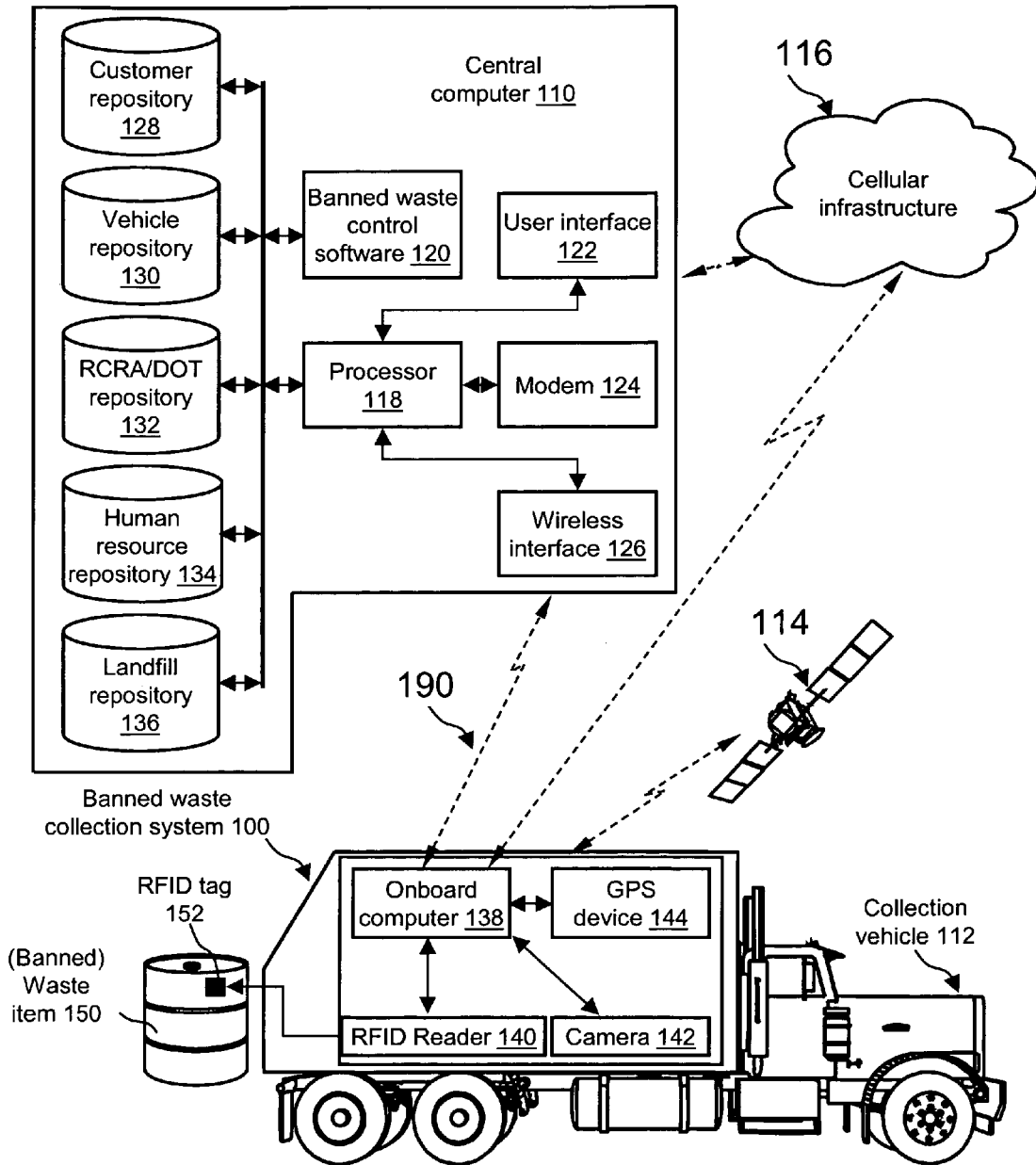


Figure 1

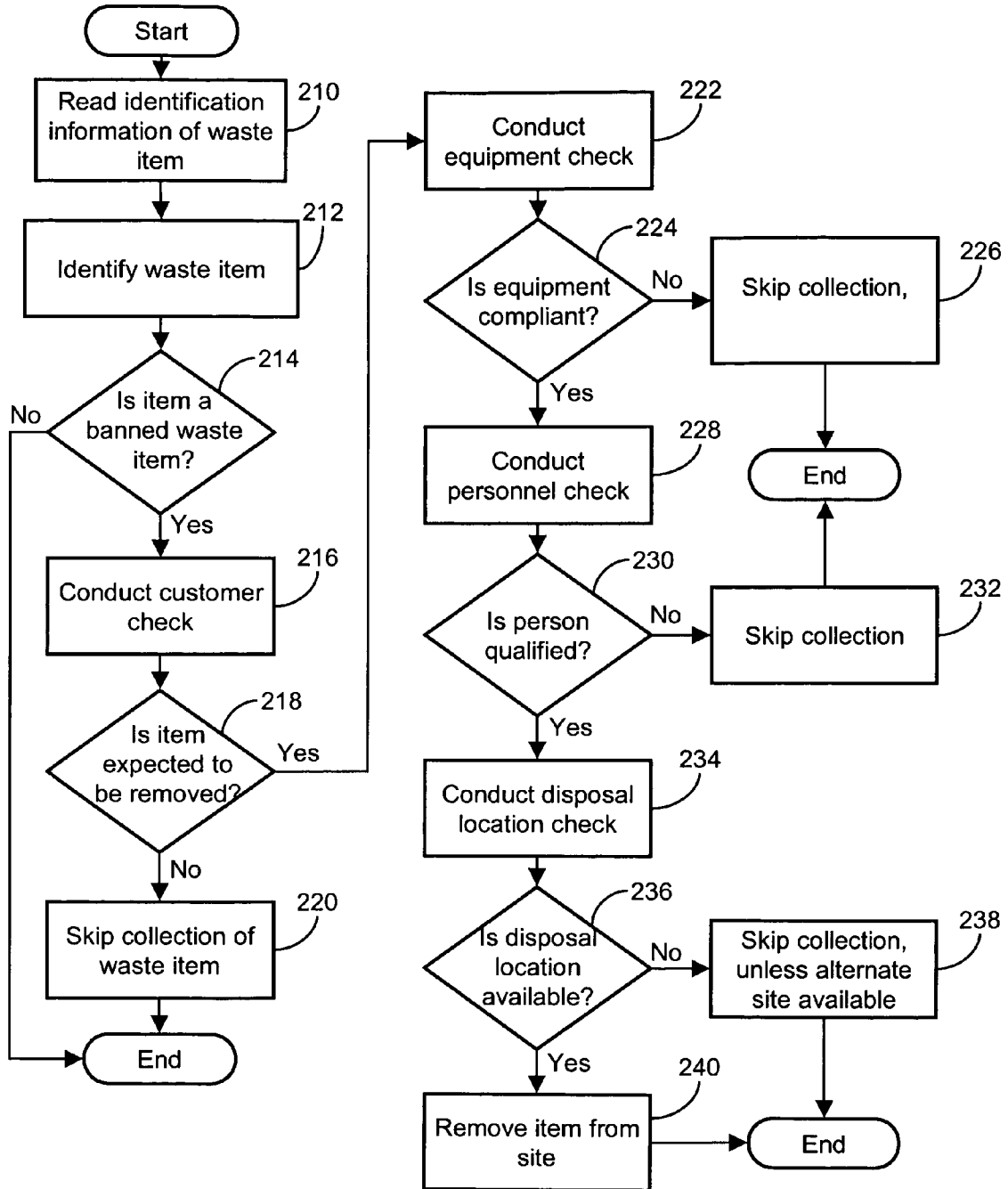


Figure 2

1

## SYSTEMS AND METHODS FOR IDENTIFYING AND COLLECTING BANNED WASTE

### RELATED APPLICATIONS

This application is related to the following copending and commonly assigned patent applications, which are incorporated herein by reference in their entirety: “Systems and Methods for Identifying Banned Waste in a Municipal Solid Waste Environment,” having application Ser. No. 11/433,505, filed on May 15, 2006; “Systems for and Methods of Asset Management In a Waste Management Service Environment,” having application Ser. No. 11/435,688, filed on May 18, 2006; and “Systems and Methods for Using Billing Information to Dynamically Route Vehicles,” having application Ser. No. 11/515,788 and, filed on Sep. 6, 2006.

### BACKGROUND OF THE INVENTION

#### 1. Field of the Invention

Embodiments of the present invention relate primarily to the field of waste management and, more particularly, to systems and methods for identifying and collecting hazardous and/or special waste items.

#### 2. Background Description

Waste management companies provide residential, commercial, and municipal waste management and recycling services for communities and organizations. Customers can range from single residences to entire towns or companies. Municipalities may contract with, or other wise engage, a waste management service provider to handle their municipal solid waste (“MSW”). MSW is garbage, refuse, recyclables and other discarded materials that result from residential, commercial, industrial, and community activities. MSW does not include, for example, hazardous waste, animal waste used as fertilizer, or sewage sludge.

Often, residential or commercial customers put waste other than MSW into a waste container. Such waste can generally be termed “banned waste” that must be disposed of properly in order to comply with local, state and/or federal laws and regulations.

One type of banned waste is referred to as hazardous waste. As used herein, hazardous waste is a waste with properties that make it dangerous or potentially harmful to human health or the environment. The universe of hazardous wastes is large and diverse. Hazardous wastes can be liquids, solids, contained gases, or sludges. They can be the by-products of manufacturing processes or simply discarded commercial products, like cleaning fluids or pesticides.

In regulatory terms, a Resource Conservation and Recovery Act (RCRA) hazardous waste is a waste that appears on one of the four hazardous wastes lists (F-list, K-list, P-list, or U-list), or exhibits at least one of four characteristics—ignitability, corrosivity, reactivity, or toxicity. Hazardous waste is regulated under the RCRA Subtitle C.

Another type of banned waste referred to as “special waste” can include items such as household hazardous waste, bulky wastes (refrigerators, pieces of furniture, etc.) tires, and used oil. State and local governments regulate both hazardous and special waste to ensure proper transport and disposal. Generally, only properly permitted and regulated companies are authorized to remove and dispose of these types of waste.

Both hazardous and special wastes are also regulated by local and state governments to ensure, for example, that proper transport and disposal procedures are followed. Often, customers co-mingle banned waste with standard MSW.

2

Generally, only properly permitted and regulated companies are authorized to remove and dispose of these types of waste. If such a waste carrier picks up these banned waste items, either knowingly or unwittingly, the waste carrier may be violating of one or more operating permits and is subject to various penalties, such as monetary fines and/or suspension of one or more permits.

Commonly, for the collection of refuse, a waste management service places waste containers for use at a plurality of customer sites. Waste container types are diverse in the industry and can include, for example, residential or commercial large-volume metal containers such as dumpsters, roll-off containers, rolling lift (or tip) carts, and/or other types of containers.

Conventional processes for tracking the collection of banned waste at various customer sites are largely manually intensive and paper-based, requiring various personnel to handle and process the paper records. Such manual processes are cumbersome and prone to human error.

For example, personnel not properly trained and/or licensed to handle or remove a particular type of waste may inadvertently handle or remove such waste. The lack of cross-checking and immediate feedback in conventional systems may result in unauthorized personnel removing such waste, thereby creating health and/or safety risks to themselves and others. We have discovered that there exists a need to automate the manner in which banned waste is identified, in a manner that would reduce cost, enhance safety, and comply or facilitate compliance with applicable health and safety laws and regulations.

### SUMMARY OF EMBODIMENTS OF THE INVENTION

Embodiments of the present invention relate to systems and methods that can be used to ensure that proper procedures are followed throughout the removal and disposal of banned waste, to prevent banned waste from entering the MSW stream, and to prevent regulatory violations. Various embodiments of the present invention use RFID technology and positioning technology to identify a customer site and the waste items at the customer site, in order to determine an appropriate action to be performed. In addition, in order to ensure that banned waste items are properly collected, various embodiments of the present invention can verify that qualified personnel and proper collection equipment are in place, and/or verify that there is a disposal destination available for waste disposal.

In one embodiment of the invention, a waste collection vehicle includes a reader configured to obtain identification information from an identification tag associated with the waste item. The identification tag may be a radio frequency identification (RFID) tag. A transceiver is associated with the waste collection vehicle, that is configured to: receive the identification information from the reader, wirelessly transmit the identification information to a remote computer for processing, and wirelessly receive an indication of whether the waste item should be collected and removed by the waste collection. The received indication is based on at least one hazardous characteristic associated with the identified waste item, a determination that the waste collection vehicle is authorized to collect the waste item having the at least one hazardous characteristic, and a determination that a driver of the waste collection vehicle is authorized to collect the waste item having the at least one hazardous characteristic. The received indication may also be based on a location at which

the waste collection vehicle will deposit the waste item. The collection vehicle further includes a camera to record an image of the waste item.

The transceiver may also receive position coordinates of the waste collection vehicle. The transceiver may transmit the position coordinates to a remote computer, and receive an indication of whether the position coordinates are associated with a customer in good standing. The remote computer may utilize at least one data repository to determine the at least one hazardous characteristic associated with the identified waste item, that the waste collection vehicle is authorized to collect the waste item having the at least one hazardous characteristic, and that the driver of the collection vehicle is authorized to collect the waste item having the at least one hazardous characteristic.

In another embodiment of the present invention, a method for authorizing a vehicle to remove waste items from a site includes reading identification information from an identification tag associated with the waste item, wirelessly transmitting the identification information from the collection vehicle to a remote computer for processing, and receiving wirelessly at the collection vehicle an indication of whether the waste item should be collected and removed by the waste collection vehicle. The indication is based on at least one hazardous characteristic associated with the identified waste item, a determination that the waste collection vehicle is authorized to collect the waste item having the at least one hazardous characteristic, and a determination that a driver of the waste collection vehicle is authorized to collect the waste item having the at least one hazardous characteristic. The identification tag may be a radio frequency identification tag. The received indication may also be based on a location at which the waste collection vehicle will deposit the waste item.

The method may also include receiving at the waste collection vehicle position coordinates of the waste collection vehicle. The position coordinates may be transmitted from the waste collection vehicle to a remote computer, and the collection vehicle may also receive an indication of whether the position coordinates are associated with a customer in good standing.

The method may also include utilizing the at least one data repository to determine the at least one hazardous characteristic associated with the identified waste item, that the waste collection vehicle is authorized to collect the waste item having the at least one hazardous characteristic, and that the driver of the collection vehicle is authorized to collect the waste item having the at least one hazardous characteristic.

In another embodiment of the present invention, a waste collection vehicle, includes a reader configured to obtain identification information from an identification tag associated with the waste item, and at least one data repository that utilizes the identification information to determine whether the waste item should be collected and removed by the waste collection vehicle. The determination is based on at least one hazardous characteristic associated with the identified waste item, a determination that the waste collection vehicle is authorized to collect the waste item having the at least one hazardous characteristic, and a determination that a driver of the waste collection vehicle is authorized to collect the waste item having the at least one hazardous characteristic. The identification tag may be a radio frequency identification tag. The determination can also be based on utilizing at least one data repository to determine a location at which the waste collection vehicle will deposit the waste item. The waste collection vehicle may also include a camera to record an image of the waste item.

The waste collection vehicle may also include a transceiver that receives position coordinates of the waste collection vehicle. The transceiver transmits the position coordinates to a remote computer, and receives from the remote computer an indication of whether the position coordinates are associated with a customer in good standing.

#### BRIEF DESCRIPTION OF THE DRAWINGS

The Detailed Description of the Invention, including the description of various embodiments of the invention, will be best understood when read in reference to the accompanying figures wherein:

FIG. 1 is a block diagram of an exemplary banned waste collection system in accordance with an embodiment of the present invention; and

FIG. 2 is a flow chart illustrating an exemplary method of identifying and collecting banned waste in accordance with an embodiment of the present invention.

#### DETAILED DESCRIPTION OF EMBODIMENTS OF THE INVENTION

FIG. 1 is a block diagram of an exemplary banned waste collection system **100**. Central computer **110**, global positioning system (“GPS”) system **114**, and cellular infrastructure **116** each communicate with system **100**. GPS system **114** is a standard global positioning system that supplies position data, such as digital latitude and longitude. Collection vehicle **112** can include onboard computer **138**, RFID reader **140**, GPS device **144**, and camera **142**.

Collection vehicle **112** can be, for example, a conventional waste hauling truck that is used to collect refuse, as is well known in the industry. To remove banned items, vehicle **112** can be driven to various sites such as commercial and industrial sites, residential curbsides, and/or community drop-off points.

Onboard computer **138** can be a self-contained computing apparatus that is well known and in common use, such as a standard desktop or laptop personal computer (“PC”). Alternatively, onboard computer **138** can be a computing apparatus such as a general purpose PC that is physically integrated with vehicle **112**. An onboard computer **138**, such as sold by Glacier Computer (New Milford, Conn.) or by Mobile Computing Corporation (Charlottesville, Va.), can be used.

Onboard computer **138** can include industry standard components (not shown), such as a standard user interface (e.g., a monitor), a processor, a storage device (e.g., a hard disk drive), and a clock device that can be used to provide timestamp data. Onboard computer **138** may also include standard operating system software, such as the Microsoft Windows® operating system, as well as include and/or utilize various standard interfaces (e.g., universal serial bus (“USB”) ports) that can be used to communicate with reader **140**, GPS device **144**, and camera **142**.

In some embodiments, onboard computer **138** can include a wireless interface (not shown) to facilitate communication with central computer **110** via cellular infrastructure **116**. Onboard computer **138** also can include or utilize a standard modem (not shown) to communicate with central computer **110** via cellular infrastructure **116**. In addition, onboard computer **138** can include a wireless interface (not shown) that utilizes, for example, the IEEE 802.11 standard to communicate with central computer **110** via communication link **190**.

RFID tag **152** is attached to a waste item **150**. As used herein, a waste item **150** may also be characterized as a banned waste item **150** as determined by reading RFID tag

**152.** If waste item **150** is a banned waste item **150**, RFID tag **152** will contain information identifying one or more characteristics of the banned waste item **150**. The Resource Conservation and Recovery Act (RCRA) characteristics of ignitability, corrosivity, reactivity, and toxicity, for example, may be used to characterize banned waste items **150**.

In one or more embodiments, identification information stored in RFID tag **152** can be a digital identification number that uniquely identifies one or more characteristics of banned waste item **150**. For example, if banned waste item **150** is ignitable, it may have identifier **001** associated therewith. If banned waste item **150** is corrosive, it may have identifier **002** associated therewith. If banned waste item **150** is reactive, it may have identifier **003** associated therewith. If banned waste item **150** is toxic, it may have identifier **004** associated therewith.

RFID tag **152** may contain one or more identifiers for a given banned waste item **150**. For example, a banned waste item **150** may contain identifiers **001**, **003** and **004** to respectively indicate that the banned waste item **150** is ignitable, reactive and toxic.

Other identifiers may also, of course, be used to indicate or designate other banned waste item **150** characteristics. For example, the U.S. Environmental Protection Agency (EPA) provides a list of hazardous waste items. Listed EPA items may also have identification information associated therewith and stored in RFID tag **152**, so that such items can be identified when read by RFID reader **140**.

RFID reader **140** can read the identification information and can transmit the information to onboard computer **138**. RFID reader **140** can be a commercially available RFID tag reader system, such as the TI RFID system, manufactured by Texas Instruments (Dallas, Tex.).

GPS device **144** communicates with GPS system **114** to obtain the location of collection vehicle **112**, and therefore the location of the customer site where banned waste item **150** is located, after vehicle **112** has arrived at the customer site. GPS device **144** transmits location information, such as digital latitude and longitude, to onboard computer **138**. GPS device **144** can be, for example, the GEOTAB GPS system, which is a commercially available vehicle fleet and productivity management system manufactured by GEOTAB (Burlington, Ontario, Canada).

Camera **142** can be a standard, wide angle video security camera, such as a Ganz D/N Hi/Res A/I 8.5-40 mm camera, which captures images of banned waste items **150** at collection sites. The images may be transmitted to and stored by onboard computer **138**.

Onboard computer **138** receives the identification information of banned waste item **150** from reader **140**, and the location of customer site from GPS device **144**. In the embodiment shown in FIG. 1, onboard computer **138** transmits the information from reader **140** and GPS device **144** to central computer **110** for processing and analysis, as will be described herein. In one or more other embodiments, onboard computer **138** uses the information from reader **140** and GPS device **144** to determine the specific procedures and requirements for collecting and disposing of banned waste item **150**. In these embodiments, onboard computer **138** may have the same (or substantially same) contents as central computer **110**. That is, onboard computer **112** will have the contents of customer repository **128**, vehicle repository **130**, RCRA/Department of Transportation (DOT) repository **132**, human resource repository **134**, and landfill repository **136**.

Central computer **110** can be a standard laptop or desktop computer. As shown, central computer **110** may include standard components such as processor **118** and user interface

**122.** Processor **118** can be a standard microprocessor, such as a Pentium® processor supplied by Intel Corporation (Santa Clara, Calif.), or a PowerPC® microprocessor device supplied by IBM Corporation (Armonk, N.Y.). User interface **122** can be a standard computer user interface for inputting and displaying data, such as a keyboard and mouse or a touch screen with accompanying menus and prompts.

Central computer **110** also includes modem **124** for wireless communication with system **100** through cellular infrastructure **116**. Cellular infrastructure **116** can include one or more cell towers and other cellular network interconnections, as is well known. Modem **124** can be a wireless cell phone modem, such as is provided by CYNET, Incorporated (Houston, Tex.), which can communicate with a modem (not shown) on onboard computer **138** through cellular infrastructure **116**. In addition to, or as an alternative to modem **124**, central computer **110** may also include, for example, a wireless interface **126** that operates in accordance with the IEEE 802.11 standard, to enable communication between central computer **110** and onboard computer **138** using the IEEE 802.11 standard.

Central computer **110** may include banned waste control software **120** that communicates with multiple data repositories, such as customer repository **128**, vehicle repository **130**, RCRA/DOT repository **132**, human resource repository **134**, and/or landfill repository **136**. The contents of repositories **128**, **130**, **132**, **134**, and **136** are discussed herein. The contents of repositories **128**, **130**, **132**, **134**, and **136** may vary, and be combined or organized in any manner. Repositories **128**, **130**, **132**, **134**, and **136** can be standard relational databases. Software **120** executes the flow of the method steps of FIG. 2 interacting with the various system elements of system **100** of FIG. 1 and personnel.

Customer repository **128** can include, for example, information pertaining to a plurality of customer accounts. Such information may include customer site location, route data, items expected to be removed from the customer site, and/or billing data. For example, using the location (e.g., street address, city, state, and zip code) of a customer site, software **120** may find the corresponding customer account in repository **128** and determine any banned waste items **150** that are expected to be removed from the customer site. Banned waste item(s) **150** that are expected to be removed from the customer site will generally have an identifier associated therewith such that the identifier stored on RFID tag **152** will match or correspond with an identifier in RCRA/DOT repository **132**.

Vehicle repository **130** can include a collection of vehicle **112** records, including the permit(s) that each collection vehicle **112** carries regarding waste transportation. For example, onboard computer **138** may transmit a vehicle identifier to central computer **110**. For a particular collection vehicle **112** having a vehicle identifier associated therewith, software **120** may find the vehicle record, corresponding to the vehicle identifier, in repository **130**, and determine whether vehicle **112** is authorized to remove one or more characteristics of ignitability, corrosivity, reactivity, or toxicity.

RCRA/DOT repository **132** can contain a collection of information associated with the identification, collection, and management of banned waste items **150** according to RCRA/DOT requirements. Repository **132** may include federal, state, or local regulatory information pertaining to various types of banned waste, as well as data pertaining to recoverable and/or non-recoverable items indexed by identification information contained in the respective RFID tags **152** of banned waste items **150**.

Given the identification information read from RFID tag **152**, software **120** may access repository **132** to determine, for example, whether waste item **150** is a glass container, a plastic container, an aluminum container, a paper product, or a banned (e.g., hazardous) waste item **150**. If a waste item **150** is a banned waste item **150**, software **120** may use repository **132** to determine the type of banned waste item **150** according to RCRA/DOC classification, as well as the corresponding procedures and/or requirements for collecting and disposing of banned waste item **150**.

Human resource repository **134** can include a collection of human resource information, such as employee training, license requirements, and/or a record of employee qualifications and certification. For example, given the identity of a person, software **120** may find a corresponding record of qualifications in repository **134** and determine whether the person is authorized to remove certain types of banned waste items **150**.

Landfill repository **136** can include a collection of information pertaining to each landfill and/or municipality. For example, landfill repository **136** may include information pertaining to the types of permitted waste materials, quantity limits, and hours of operation. Using repository **136**, software **120** may ascertain whether a landfill is currently accepting a certain type of banned waste item **150**.

FIG. 2 is a flow chart illustrating various methods of identifying and collecting banned waste items **150**. At step **210**, after vehicle **112** has arrived at a customer site, vehicle **112** obtains the identification information contained in RFID tag **152** using RFID reader **140**.

At step **212**, identifying indicia is read on RFID tag using RFID reader **140**, to determine whether waste item **150** is a banned waste item **150**. Identification of the type of banned waste item **150** can be determined when information pertaining to the type of banned waste item **150** is contained in or accessible via RFID tag **152**. For example, RCRA/DOT repository **132** can be queried using the identification information to obtain information pertaining to banned waste item **150** such as ignitability, corrosivity, reactivity, toxicity, the chemical abstract number (CAS) and/or a generic chemical description. Camera **142** may be used to photograph the particular banned waste item **150** identified. The photograph can be transmitted to and stored in computer **110** in order to maintain a visual record of any banned waste item **150** that is picked-up by collection vehicle **112**.

In some embodiments, repository **132** can be included in or associated with central computer **110**. In these embodiments, system **100** transmits the identification information from onboard computer **138** to central computer **110** using a wireless connection. Banned waste control software **120** may then query RCRA/DOT repository **132** using the identification information.

At decision step **214**, if waste item **150** is not a banned waste item **150**, reader **140** may be used to read tag **152** for other waste items **150** at the site, leave the site if there are no other waste items **150**, or remove waste items **150** that are not banned waste items **150**. If, at decision step **214**, it is determined that a banned waste item **150** such as a hazardous special waste item is present then, at step **216**, system **100** may conduct a customer check.

Waste collection companies will generally know before pick-up of banned waste item(s) **150** that a customer has requested such service. In circumstances where a bona fide customer exists, but the banned waste item **150** is not what was requested to be removed, the customer has, knowingly or unknowingly, made a request for waste removal that may violate the waste management security of handling waste

materials, potentially rendering the waste management companies liable for such hazardous waste.

To verify that a bona fide customer is being serviced, software **120** can first identify the customer site using the location of the customer site obtained by GPS device **144**. For example, at a given pickup site (customer), collection vehicle **112** may receive GPS coordinates via GPS system **114**, and transmit those coordinates to onboard computer **138**. Onboard computer **138** may have a database that correlates active customers in good standing with their respective GPS coordinates. A database may be utilized such as described in the following copending and commonly assigned patent application, which is incorporated herein by reference in its entirety: Systems for and Methods of Asset Management In a Waste Management Service Environment, having application Ser. No. 11/435,688, filed on May 18, 2006. If onboard computer **138** determines that GPS coordinates transmitted by collection vehicle **112** are not associated with or do not pertain to an existing customer, or that an existing customer is not in "good status" and thus should not be provided service, onboard computer **138** provide an indication to the driver of collection vehicle **112** that the location that collection vehicle **110** is presently at should not be serviced.

Once it had been determined that the customer is an active, bona fide customer, software **120** may then query customer repository **128**, obtain a list of any banned waste items **150** expected to be removed from the customer site, and compare the list with the data read from RFID tag **152** at the customer site. In doing so, software **120** verifies that a bona fide customer has requested the waste removal. Determining and verifying the customer is useful, particularly since waste management companies are generally liable and responsible for hazardous waste when the source or owner of such waste cannot be identified.

At decision step **218**, if it is determined that banned waste item **150** is not expected to be removed, then, at step **220**, vehicle **112** skips collecting banned waste item **150**. If banned waste item **150** is expected to be removed, system **100** may conduct an equipment check at step **222**. For example, software **120** may query vehicle repository **130** in order to determine whether collection vehicle **112** is authorized to remove banned waste item **150** having certain characteristic(s) (e.g., ignitability).

At decision step **224**, if it is determined that vehicle **112** is not permitted and regulated to collect banned waste item **150**, vehicle **112** skips the collection at **226**. If it is determined that vehicle **112** is permitted and authorized to collect banned waste item **150**, system **100** may also conduct a personnel check at step **228**. For example, software **120** may query human resource repository **134** using the identity, for example, of the driver of vehicle **112**, in order to determine whether the person is authorized to remove the identified banned waste item(s) **150**.

At decision step **230**, if it is determined that the driver of vehicle **112** is not authorized to remove banned waste item(s) **150**, vehicle **112** skips the collection at step **232**. If it is determined that the driver of vehicle **112** is authorized to remove banned waste item(s) **152**, system **100** may further conduct a disposal location check at step **234**. For example, software **120** may query landfill repository **136** in order to determine whether the disposal location for banned waste item(s) **150** accepts such a type of banned waste item **150** and/or is currently open and accepting such banned waste items **150**.

At decision step **236**, if it is determined that the disposal location for banned waste item **150** does not accept such items or is otherwise unavailable, vehicle **112** skips the collection at



step 238. If it is determined that the disposal location for banned waste item(s) 150 accepts such items and is currently available, vehicle 112 then completes the removal operation of banned waste item 150 at step 240 and subsequently disposes of banned waste item(s) 150.

Other embodiments, extensions, and modifications of the ideas presented above are comprehended and within the reach of one skilled in the art upon reviewing the present disclosure. Accordingly, the scope of the present invention in its various aspects should not be limited by the examples and embodiments presented above. The individual aspects of the present invention, and the entirety of the invention should be regarded so as to allow for modifications and future developments within the scope of the present disclosure. The present invention is limited only by the claims that follow.

What is claimed is:

1. A system for authorizing a waste item to be removed from a site, comprising:

a waste collection vehicle comprising a reader configured to obtain identification information from an identification tag associated with the waste item; and

a transceiver associated with the waste collection vehicle, configured to:

receive the identification information from the reader;

wirelessly transmit the identification information to a remote computer for processing; and

wirelessly receive an indication of whether the waste item should be collected and removed by the waste collection vehicle based on i) at least one hazardous characteristic associated with the identified waste item, ii) a determination that the waste collection vehicle is authorized to collect the waste item having the at least one hazardous characteristic, and iii) a determination that a driver of the waste collection vehicle is authorized to collect the waste item having the at least one hazardous characteristic.

2. The system according to claim 1, wherein the identification tag is a radio frequency identification tag.

3. The system according to claim 1, wherein the received indication is further based on a location at which the waste collection vehicle will deposit the waste item.

4. The system of claim 1, wherein the transceiver receives position coordinates of the waste collection vehicle.

5. The system according to claim 4, wherein the transceiver transmits the position coordinates to the remote computer, and receives an indication of whether the position coordinates are associated with a customer in good standing.

6. The system according to claim 5, wherein the remote computer utilizes at least one data repository to determine i) the at least one hazardous characteristic associated with the identified waste item, ii) that the waste collection vehicle is authorized to collect the waste item having the at least one hazardous characteristic, and iii) that the driver of the collection vehicle is authorized to collect the waste item having the at least one hazardous characteristic.

7. The system according to claim 1, wherein the collection vehicle further comprises a camera to record an image of the waste item.

8. A method for authorizing a collection vehicle to remove waste item from a site, comprising:

reading identification information from an identification tag associated with the waste item;

wirelessly transmitting the identification information from the collection vehicle to a remote computer for processing; and

receiving wirelessly at the collection vehicle an indication of whether the waste item should be collected and removed by the collection vehicle based on i) at least one hazardous characteristic associated with the identified waste item, ii) a determination that the waste collection vehicle is authorized to collect the waste item having the at least one hazardous characteristic, and iii) a determination that a driver of the collection vehicle is authorized to collect the waste item having the at least one hazardous characteristic.

9. The method of claim 8, wherein the identification tag is a radio frequency identification tag.

10. The method according to claim 8, wherein the received indication is further based on a location at which the collection vehicle will deposit the waste item.

11. The method according to claim 10, wherein a data repository is utilized to determine i), ii) and iii).

12. The method according to claim 8, further comprising receiving at the collection vehicle position coordinates of the collection vehicle.

13. The method according to claim 12, further comprising: transmitting the position coordinates from the collection vehicle to a remote computer; and

receiving an indication of whether the position coordinates are associated with a customer in good standing.

14. A waste collection vehicle, comprising:

a reader configured to obtain identification information from an identification tag associated with the waste item; and

at least one data repository that utilizes the identification information to determine whether the waste item should be collected and removed by the waste collection vehicle based on: i) at least one hazardous characteristic associated with the identified waste item, ii) a determination that the waste collection vehicle is authorized to collect the waste item having the at least one hazardous characteristic, and iii) a determination that a driver of the waste collection vehicle is authorized to collect the waste item having the at least one hazardous characteristic.

15. The waste collection vehicle according to claim 14, wherein the identification tag is a radio frequency identification tag.

16. The waste collection vehicle according to claim 14, wherein the determination is further based on utilizing the at least one data repository to determine a location at which the waste collection vehicle will deposit the waste item.

17. The waste collection vehicle of claim 14, further comprising a transceiver that receives position coordinates of the waste collection vehicle.

18. The waste collection vehicle according to claim 17, wherein the transceiver transmits the position coordinates to a remote computer, and receives from the remote computer an indication of whether the position coordinates are associated with a customer in good standing.

19. The waste collection vehicle according to claim 17, wherein the data repository utilizes the position coordinates to indicate whether a customer associated with the position coordinates is in good standing.

20. The waste collection vehicle according to claim 14, wherein the collection vehicle further comprises a camera to record an image of the waste item.