



US008384742B2

(12) **United States Patent**
Nielsen et al.

(10) **Patent No.:** **US 8,384,742 B2**

(45) **Date of Patent:** ***Feb. 26, 2013**

(54) **VIRTUAL WHITE LINES (VWL) FOR DELIMITING PLANNED EXCAVATION SITES OF STAGED EXCAVATION PROJECTS**

5,557,515 A 9/1996 Abbruzzese et al.
5,699,244 A 12/1997 Clark, Jr. et al.
5,815,411 A 9/1998 Ellenby et al.

(Continued)

(75) Inventors: **Steven E. Nielsen**, North Palm Beach, FL (US); **Curtis Chambers**, Palm Beach Gardens, FL (US); **Jeffrey Farr**, Jupiter, FL (US)

FOREIGN PATENT DOCUMENTS

EP 100324 B1 2/1984
JP 2005327228 11/2005

(Continued)

(73) Assignee: **Certusview Technologies, LLC**, Palm Beach Gardens, FL (US)

OTHER PUBLICATIONS

(*) Notice: Subject to any disclaimer, the term of this patent is extended or adjusted under 35 U.S.C. 154(b) by 895 days.

Response from Applicant to the examiner initiated interview on Oct. 22, 2012.*

This patent is subject to a terminal disclaimer.

(Continued)

(21) Appl. No.: **12/475,905**

Primary Examiner — Kee M Tung

(22) Filed: **Jun. 1, 2009**

Assistant Examiner — Sing-Wai Wu

(65) **Prior Publication Data**

(74) *Attorney, Agent, or Firm* — Foley & Lardner LLP; Joseph Teja, Jr.

US 2010/0201706 A1 Aug. 12, 2010

Related U.S. Application Data

(60) Provisional application No. 61/151,769, filed on Feb. 11, 2009.

(51) **Int. Cl.**

G09G 5/00 (2006.01)

G06F 3/048 (2006.01)

(52) **U.S. Cl.** **345/632**; 345/619; 715/771

(58) **Field of Classification Search** None
See application file for complete search history.

(56) **References Cited**

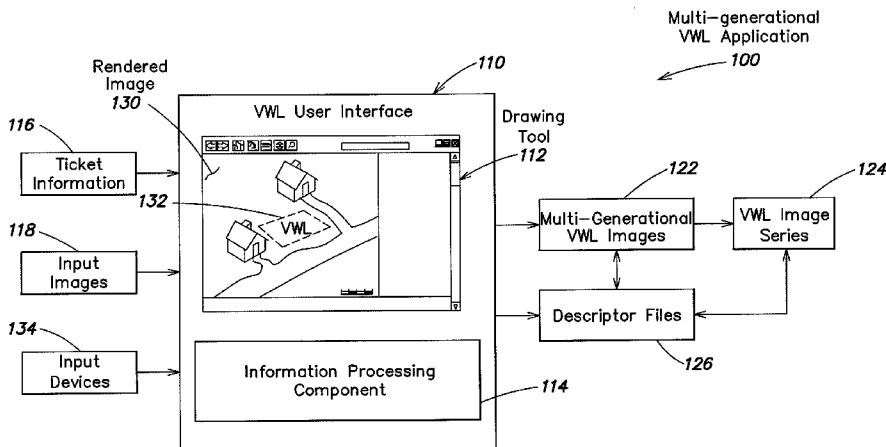
U.S. PATENT DOCUMENTS

4,550,376 A 10/1985 Maciejczak
5,032,989 A 7/1991 Tornetta
5,414,462 A 5/1995 Veatch
5,519,809 A 5/1996 Husseiny et al.

(57) **ABSTRACT**

Methods and apparatus for facilitating detection of a presence or an absence of at least one underground facility within a dig area. Source data representing one or more input images of a geographic area including the dig area is electronically received at a first user location, which may be remote from the dig area. The source data is processed so as to display at least a portion of the input image(s) on a display device. One or more indicators are added to the displayed input image(s), via a user input device associated with the display device, to provide at least one indication of the dig area and thereby generate a marked-up digital image. In the case of a staged excavation project, the input image, or a plurality of associated images, may include indicia of multiple dig areas corresponding to multiple stages of the staged excavation project.

16 Claims, 14 Drawing Sheets



U.S. PATENT DOCUMENTS							
5,937,406	A	8/1999	Balabine et al.	2007/0195011	A1	8/2007	Hatori et al.
5,961,569	A	10/1999	Craport et al.	2007/0219722	A1	9/2007	Sawyer et al.
5,987,380	A	11/1999	Backman et al.	2007/0223803	A1	9/2007	Shindo
6,075,481	A	6/2000	Eslambolchi et al.	2007/0226004	A1	9/2007	Harrison
6,101,087	A	8/2000	Sutton et al.	2008/0013940	A1	1/2008	Jung
6,169,517	B1	1/2001	Eslambolchi et al.	2008/0021863	A1	1/2008	Evans et al.
6,195,922	B1	3/2001	Stump	2008/0189249	A1	8/2008	Petakov et al.
6,266,432	B1	7/2001	Wiens	2008/0228294	A1	9/2008	Nielsen et al.
6,298,446	B1	10/2001	Schreiber et al.	2008/0245299	A1	10/2008	Nielsen et al.
6,343,290	B1	1/2002	Cossins et al.	2008/0310721	A1	12/2008	Yang
6,401,051	B1	6/2002	Merriam	2009/0013928	A1	1/2009	Nielsen et al.
6,426,872	B1	7/2002	Sutton et al.	2009/0174768	A1	7/2009	Blackburn et al.
6,434,258	B2	8/2002	Wiens	2009/0201178	A1	8/2009	Nielsen et al.
6,445,334	B1	9/2002	Bradley	2009/0201311	A1	8/2009	Nielsen et al.
6,493,650	B1	12/2002	Rodgers et al.	2009/0202101	A1	8/2009	Nielsen et al.
6,501,501	B1	12/2002	Miyazawa	2009/0202110	A1	8/2009	Nielsen et al.
6,587,851	B1	7/2003	Ditcharo et al.	2009/0202111	A1	8/2009	Nielsen et al.
6,650,293	B1	11/2003	Eslambolchi et al.	2009/0202112	A1	8/2009	Nielsen et al.
6,710,741	B2	3/2004	Tucker	2009/0204238	A1	8/2009	Nielsen et al.
6,751,552	B1	6/2004	Minelli	2009/0204466	A1	8/2009	Nielsen et al.
6,751,553	B2	6/2004	Young et al.	2009/0204614	A1	8/2009	Nielsen et al.
6,751,554	B1	6/2004	Asher et al.	2009/0204625	A1	8/2009	Chambers et al.
6,772,142	B1	8/2004	Kelling et al.	2009/0207019	A1	8/2009	Nielsen et al.
6,798,379	B2	9/2004	Tucker et al.	2009/0208642	A1	8/2009	Nielsen et al.
6,853,905	B2	2/2005	Barton	2009/0210098	A1	8/2009	Nielsen et al.
6,895,356	B2	5/2005	Brimhall et al.	2009/0210284	A1	8/2009	Nielsen et al.
6,898,525	B1	5/2005	Minelli	2009/0210285	A1	8/2009	Nielsen et al.
6,904,160	B2	6/2005	Burgess	2009/0210297	A1	8/2009	Nielsen et al.
6,904,361	B1	6/2005	Tallman et al.	2009/0210298	A1	8/2009	Nielsen et al.
6,956,524	B2	10/2005	Tucker et al.	2009/0237408	A1	9/2009	Nielsen et al.
6,958,690	B1*	10/2005	Asher et al. 340/531	2009/0238414	A1	9/2009	Nielsen et al.
6,972,698	B2	12/2005	Deguchi	2009/0238415	A1	9/2009	Nielsen et al.
6,999,021	B2	2/2006	Taylor, Jr. et al.	2009/0238416	A1	9/2009	Nielsen et al.
7,003,138	B2	2/2006	Wilson	2009/0238417	A1	9/2009	Nielsen et al.
7,054,741	B2	5/2006	Harrison et al.	2009/0241045	A1	9/2009	Nielsen et al.
7,133,802	B2	11/2006	Koch et al.	2009/0241046	A1	9/2009	Nielsen et al.
7,142,196	B1	11/2006	Connor et al.	2009/0324815	A1	12/2009	Nielsen et al.
7,171,389	B2	1/2007	Harrison	2009/0327024	A1	12/2009	Nielsen et al.
7,216,034	B2	5/2007	Vitikainen et al.	2010/0006667	A1	1/2010	Nielsen et al.
7,262,797	B2	8/2007	Weldum	2010/0010862	A1	1/2010	Nielsen et al.
7,313,759	B2	12/2007	Sinisi	2010/0010863	A1	1/2010	Nielsen et al.
7,356,406	B2	4/2008	Harrison et al.	2010/0010882	A1	1/2010	Nielsen et al.
7,447,509	B2	11/2008	Cossins et al.	2010/0010883	A1	1/2010	Nielsen et al.
7,482,978	B2	1/2009	Yang et al.	2010/0033684	A1	2/2010	Thiebaud
7,640,105	B2	12/2009	Nielsen et al.	2010/0084532	A1	4/2010	Nielsen et al.
7,773,095	B1	8/2010	Badrak et al.	2010/0085054	A1	4/2010	Nielsen et al.
7,978,129	B2	7/2011	Sawyer et al.	2010/0085185	A1	4/2010	Nielsen et al.
8,045,995	B2	10/2011	King	2010/0085376	A1	4/2010	Nielsen et al.
2001/0004739	A1	6/2001	Sekiguchi et al.	2010/0085694	A1	4/2010	Nielsen et al.
2002/0078035	A1	6/2002	Frank et al.	2010/0085701	A1	4/2010	Nielsen et al.
2002/0124177	A1	9/2002	Harper	2010/0086671	A1	4/2010	Nielsen et al.
2002/0184235	A1	12/2002	Young et al.	2010/0086677	A1	4/2010	Nielsen et al.
2003/0012411	A1	1/2003	Sjostrom et al.	2010/0088031	A1	4/2010	Nielsen et al.
2003/0061211	A1	3/2003	Shultz et al.	2010/0088032	A1	4/2010	Nielsen et al.
2003/0131251	A1	7/2003	Fetkovich	2010/0088134	A1	4/2010	Nielsen et al.
2004/0006425	A1	1/2004	Wood et al.	2010/0088135	A1	4/2010	Nielsen et al.
2004/0030706	A1	2/2004	Evans	2010/0088164	A1	4/2010	Nielsen et al.
2004/0110515	A1	6/2004	Blumberg et al.	2010/0090700	A1	4/2010	Nielsen et al.
2004/0128215	A1	7/2004	Florance	2010/0090858	A1	4/2010	Nielsen et al.
2004/0146185	A1	7/2004	Blair	2010/0091200	A1	4/2010	Vigouroux
2004/0210370	A1	10/2004	Gudat et al.	2010/0094553	A1	4/2010	Nielsen et al.
2005/0033513	A1	2/2005	Gasbarro	2010/0117654	A1	5/2010	Nielsen et al.
2005/0038999	A1	2/2005	Pelly	2010/0188088	A1	7/2010	Nielsen et al.
2005/0262109	A1	11/2005	Alexandrescu	2010/0188215	A1	7/2010	Nielsen et al.
2005/0273346	A1	12/2005	Frost	2010/0188216	A1	7/2010	Nielsen et al.
2006/0026020	A1	2/2006	Waite et al.	2010/0188245	A1	7/2010	Nielsen et al.
2006/0077095	A1*	4/2006	Tucker et al. 342/357.08	2010/0188407	A1	7/2010	Nielsen et al.
2006/0085133	A1	4/2006	Young et al.	2010/0189312	A1	7/2010	Nielsen et al.
2006/0085396	A1	4/2006	Evans et al.	2010/0189887	A1	7/2010	Nielsen et al.
2006/0125828	A1	6/2006	Harrison	2010/0198663	A1	8/2010	Nielsen et al.
2006/0161349	A1	7/2006	Cross et al.	2010/0201690	A1	8/2010	Nielsen et al.
2006/0200305	A1	9/2006	Sheha et al.	2010/0205031	A1	8/2010	Nielsen et al.
2006/0208927	A1	9/2006	Poor et al.	2010/0205032	A1	8/2010	Nielsen et al.
2006/0276985	A1	12/2006	Xu	2010/0205195	A1	8/2010	Nielsen et al.
2006/0282280	A1	12/2006	Stotz et al.	2010/0205264	A1	8/2010	Nielsen et al.
2006/0285152	A1	12/2006	Skillen	2010/0205536	A1	8/2010	Nielsen et al.
2007/0112936	A1	5/2007	Harrison	2010/0205554	A1	8/2010	Nielsen et al.
2007/0143676	A1	6/2007	Chen	2010/0205555	A1	8/2010	Nielsen et al.
				2010/0228588	A1	9/2010	Nielsen et al.

2010/0245086	A1	9/2010	Nielsen et al.	Virtual%20Polygon%20Fact%20Sheet.pdf, printed on Dec. 16, 2009 (original publication date unknown), 4 pages.
2010/0247754	A1	9/2010	Nielsen et al.	Hanneman, J., "Notification and the NMOC Map System," http://nmonecall.org/articles.htm , printed on Dec. 16, 2009 (original publication date unknown), 10 pages.
2010/0253511	A1	10/2010	Nielsen et al.	International Search Report and Written Opinion, Application Serial No. PCT/US2009/01707, May 14, 2009, 13 pages.
2010/0253513	A1	10/2010	Nielsen et al.	One Call Concepts Inc.—Company News & Executive Profiles, BNET Industries, http://resources.bnet.com/topic/one_call+concepts+inc.html , printed on Dec. 15, 2009 (original publication date unknown), 6 pages.
2010/0253514	A1	10/2010	Nielsen et al.	One Call Concepts Inc.—Prism Software, http://www.occinc.com/services/prism_software.asp , printed on Dec. 16, 2009 (original publication date unknown), 1 page.
2010/0255182	A1	10/2010	Nielsen et al.	Pevarski, R., Virginia Pilot Project: Technology Meets Damage Prevention, http://www.excavationsafetyonline.com/esg/guidePDFs/2009_2009_ESG_Page_9.pdf , printed on Nov. 3, 2009, 1 page.
2010/0256825	A1	10/2010	Nielsen et al.	Pickus, J., "Call USA—Automating "Call Before You Dig" Processes for a Major Utility," GITA's Annual Conference on Apr. 25-28, 2004, 19 pages.
2010/0256863	A1	10/2010	Nielsen et al.	Pickus, J., "Internet GIS for the Municipality," Las Vegas Water District, http://spatialnews.geocomm.com/geonetcom/seminar3.html , printed Dec. 16, 2009 (original publication date unknown), 3 pages.
2010/0256912	A1	10/2010	Nielsen et al.	Schutzberg, A., "Autodesk Positions Itself for 2008 and Beyond," Location Intelligence Articles, Feb. 22, 2008, http://www.locationintelligence.net/articles/2693.html , printed Dec. 16, 2009, 4 pages.
2010/0256981	A1	10/2010	Nielsen et al.	Stocking, A., "Betting on Technology," Mar. 2007, http://www-resources.autodesk.com/files/government/customer_stories/A137-LVTBVWD_Municipal_Sewer_and_Water_article.pdf , 3 pages.
2010/0257029	A1	10/2010	Nielsen et al.	Utility Notification Center—Membership Details, http://www.callbeforeyoudig.org/himember.htm , printed on Dec. 12, 2009 (original publication date unknown), 12 pages.
2010/0257477	A1	10/2010	Nielsen et al.	Notice of Allowance dated Dec. 27, 2011 from U.S. Appl. No. 13/028,687.
2010/0259381	A1	10/2010	Nielsen et al.	Office Action dated Feb. 14, 2012 from U.S. Appl. No. 12/833,103.
2010/0259414	A1	10/2010	Nielsen et al.	Office Action dated Mar. 1, 2012 from U.S. Appl. No. 12/475,924.
2010/0262470	A1	10/2010	Nielsen et al.	Office Action dated Mar. 12, 2012 from U.S. Appl. No. 12/355,272.
2010/0262670	A1	10/2010	Nielsen et al.	Office Action dated Mar. 13, 2012 from U.S. Appl. No. 12/422,372.
2010/0263591	A1	10/2010	Nielsen et al.	International Search Report and Written Opinion, Application Serial No. PCT/2010/000131, Apr. 23, 2010.
2010/0268786	A1	10/2010	Nielsen et al.	Blue Stakes of Utah Utility Notification Center, Inc., Association Newsletter, vol. 1, No. 1, 8 pages, Nov. 1, 2005.
2010/0285211	A1	11/2010	Nielsen et al.	Blue Stakes of Utah Utility Notification Center, Inc., Association Newsletter, vol. 1, No. 2, 5 pages, Jul. 15, 2006.
2010/0318401	A1	12/2010	Nielsen et al.	Blue Stakes of Utah Utility Notification Center, Inc., Association Newsletter, vol. 3, No. 1, 7 pages, Nov. 2007.
2010/0318402	A1	12/2010	Nielsen et al.	Blue Stakes of Utah Utility Notification Center, Inc., Association Newsletter, vol. 5, No. 1, 7 pages, Dec. 2009.
2010/0318465	A1	12/2010	Nielsen et al.	DigSafely New York, i-Notice, http://www.ufpo.org/excv/Inotice/ , (original publication date unknown), printed Jun. 5, 2010, 4 pages.
2010/0324967	A1	12/2010	Nielsen et al.	Eastern Virginia Damage Prevention Committee, Meeting Minutes, Mar. 26, 2009 and May 12, 2009, 6 pages.
2011/0007076	A1	1/2011	Nielsen et al.	Fredericksburg Area Damage Prevention Committee, Meeting Minutes, Dec. 2009.
2011/0020776	A1	1/2011	Nielsen et al.	Georgia UPC EDEN, Web Entry Instruction Manual, www.gaupc.org , Jan. 22, 2009, 60 pages.
2011/0022433	A1	1/2011	Nielsen et al.	GPS Technology Enhancing Underground Utility Locating, Underground Construction Magazine, Apr. 2010, 3 pages.
2011/0035245	A1	2/2011	Nielsen et al.	Illinois One-Call System, NEWTIN Remote Ticket Entry User's Manual, Jun. 12, 2007, 29 pages.
2011/0035251	A1	2/2011	Nielsen et al.	International Search Report and Written Opinion, Application Serial No. PCT/2010/000130, May 18, 2010.
2011/0035252	A1	2/2011	Nielsen et al.	IRTH Internet Manual, Arizona Bluestake, Call Before you Dig, http://www.azbluestake.com/main/download/IRTHNetFeatures.pdf , (original publication date unknown), 47 pages.
2011/0035260	A1	2/2011	Nielsen et al.	IRTH Internet Manual, Georgia Utilities Protection Center, Feb. 16, 2006, 20 pages.
2011/0035324	A1	2/2011	Nielsen et al.	IRTH One Call Centers, Underground Utility Damage Prevention, Ticket Management, http://www.irth.com/SOLUTIONS/IRTH_ONE_CALL/index.aspx , (original publication date unknown), 2 pages.
2011/0035328	A1	2/2011	Nielsen et al.	
2011/0040589	A1	2/2011	Nielsen et al.	
2011/0040590	A1	2/2011	Nielsen et al.	
2011/0045175	A1	2/2011	Nielsen et al.	
2011/0046993	A1	2/2011	Nielsen et al.	
2011/0046994	A1	2/2011	Nielsen et al.	
2011/0046999	A1	2/2011	Nielsen et al.	
2011/0060496	A1	3/2011	Nielsen et al.	
2011/0060549	A1	3/2011	Nielsen et al.	
2011/0095885	A9	4/2011	Nielsen et al.	
2011/0131081	A1	6/2011	Nielsen et al.	
2011/0135163	A1	6/2011	Nielsen et al.	
2011/0137769	A1	6/2011	Nielsen et al.	
2011/0236588	A1	9/2011	Nielsen et al.	
2011/0279229	A1	11/2011	Nielsen et al.	
2011/0279230	A1	11/2011	Nielsen et al.	
2011/0279476	A1	11/2011	Nielsen et al.	
2011/0282542	A9	11/2011	Nielsen et al.	
2011/0283217	A1	11/2011	Nielsen et al.	
2011/0285749	A1	11/2011	Nielsen et al.	
2012/0019380	A1	1/2012	Nielsen et al.	
2012/0036140	A1	2/2012	Nielsen et al.	
2012/0058751	A1	3/2012	Colley	
2012/0065924	A1	3/2012	Nielsen et al.	
2012/0065944	A1	3/2012	Nielsen et al.	
2012/0066137	A1	3/2012	Nielsen et al.	
2012/0066273	A1	3/2012	Nielsen et al.	
2012/0066506	A1	3/2012	Nielsen et al.	
2012/0069178	A1	3/2012	Nielsen et al.	
2012/0072035	A1	3/2012	Nielsen et al.	
2012/0110019	A1	5/2012	Nielsen et al.	
2012/0113244	A1	5/2012	Nielsen et al.	

FOREIGN PATENT DOCUMENTS

JP 2006189930 7/2006

OTHER PUBLICATIONS

Claims for examiners amendment in 098689-0338.*

"Case Study: Wireless mash-up keeps track of Vegas' pipes," TechWorld, <http://howto.techworld.com/mobile-wireless/2297/case-study-wireless-mash-up-keeps-tra...>, printed Dec. 16, 2009 (original publication date unknown), 2 pages.

Gopher State One Call—History and Background, <http://www.gopherstateonecall.org/history.aspx>, printed on Dec. 12, 2009 (original publication date unknown), 2 pages.

Gopher State One Call—Virtual Polygon Fact Sheet, <http://www.gopherstateonecall.org/docs/>

- Letter from Norfield Data Products to Wolf Greenfield & Sacks, P.C., May 5, 2010, 2 pages.
- North Carolina One-Call Center, Newtin Remote Ticket Entry Application Tutorial, Sep. 17, 2009, 24 pages.
- North Carolina One-Call Center, Newtin Remote Ticket Entry Quick Map Tutorial, Nov. 2008, 13 pages.
- NTDPC One-Call Mapping Notification Processes, <http://www.ntdpc.com/ntdpc/faces/ntscf.jsp>, (original publication date unknown), 12 pages.
- Utility Notification Center of Colorado, Annual Report for Fiscal Year 2004, 41 pages.
- Utility Notification Center of Colorado, Annual Report for Fiscal Year 2005, 39 pages.
- Utility Notification Center of Colorado, Annual Report for Fiscal Year 2006, 49 pages.
- Utility Notification Center of Colorado, Annual Report for Fiscal Year 2007, 44 pages.
- Utility Notification Center of Colorado, Annual Report for Fiscal Year 2008, 39 pages.
- Virginia Pilot Project for One-call Location Technology, Project Plan, Aug. 2006, 28 pages.
- Virginia Pilot Project, Incorporating GPS Technology to Enhance One-Call Damage Prevention, Phase I—Electronic White Lining Project Report, Nov. 2007, 50 pages.
- Blue Stakes of Utah Utility Notification Center, Inc., Association Newsletter, vol. 4, No. 1, pp. 1-8, Nov. 2008.
- http://www.a11call.com/rte_proc.html, printed Apr. 14, 2009, 1 page (original publication date unknown).
- Alabama 1 Call, GeoRemote, Remote Ticket Entry Manual, 35 pages, printed from website <http://www.a11call.com> on Apr. 2, 2009 (original publication date unknown).
- Alabama 1 Call, Annual Operations Report, 2005, 32 pages, printed from website <http://www.a11call.com> on Apr. 2, 2009 (original publication date unknown).
- Co-Pending U.S. Appl. No. 12/050,555, filed Mar. 18, 2008.
- Co-Pending U.S. Appl. No. 12/239,366, filed Sep. 26, 2008.
- Co-Pending U.S. Appl. No. 12/239,414, filed Sep. 26, 2008.
- Co-Pending U.S. Appl. No. 12/355,222, filed Jan. 16, 2009.
- Co-Pending U.S. Appl. No. 12/355,272, filed Jan. 16, 2009.
- Co-Pending U.S. Appl. No. 12/355,300, filed Jan. 16, 2009.
- Co-Pending U.S. Appl. No. 12/366,853, filed Feb. 6, 2009.
- Co-Pending U.S. Appl. No. 12/475,924, filed Jun. 1, 2009.
- Co-Pending U.S. Appl. No. 12/475,935, filed Jun. 1, 2009.
- Co-Pending U.S. Appl. No. 12/475,956, filed Jun. 1, 2009.
- Co-Pending U.S. Appl. No. 12/422,364, filed Apr. 13, 2009.
- Co-Pending U.S. Appl. No. 12/422,372, filed Apr. 13, 2009.
- Common Ground Alliance, Best Practices Version 1.0, Apr. 2003.
- Common Ground, Study of One-Call Systems and Damage Prevention Best Practices, Aug. 1999.
- Binder 1: "Virginia Utility Protection Service, Inc. Response to US Patent Application Publication . . .," pp. DY0001-DY0755, Nov. 3, 2010.
- Binder 2: "Patent US 2009 0237408," pp. DY0756-DY1271, Nov. 3, 2010.
- Binder 3: "Patent US 2009 0238414," pp. DY1272-DY2210, Nov. 3, 2010.
- Binder 4: "Patent US 2009 0238415," pp. DY2211-DY3308, Nov. 3, 2010.
- Binder 5: "Patent US 2009 0238416," pp. DY3309-DY3889, Nov. 3, 2010.
- Binder 6: "Patent US 2009 0238417," pp. DY3890-DY4133, Nov. 3, 2010.
- Binder 7: "Patent US 2009 0241045," pp. DY4134-DY4276, Nov. 3, 2010.
- Binder 8: "Patent US 2009 0241046," pp. DY4277-DY4499, Nov. 3, 2010.
- R. Pevarski, Letter from the Virginia Utility Protection Service, Inc., dated Apr. 7, 2010.
- H.L. Smith, Letter dated Oct. 27, 2010.
- H.L. Smith, Letter dated Jan. 14, 2011, with two attachments each dated Jan. 5, 2011.
- U.S. Appl. No. 13/028,687, filed Feb. 16, 2011, Nielsen et al.
- U.S. Appl. No. 12/833,103, filed Feb. 9, 2010, Nielsen et al.
- Australian Dial Before You Dig User Kit, http://1100.com.au/Portals/0/DBYD_user_kit_2010.pdf, original publication dated unknown, retrieved Sep. 7, 2011, 24 pages.
- CGA, Common Ground Alliance, Best Practices, Version 4.0, Mar. 2007, 102 pages.
- Chmura, A., "Professional Excavators Enter Tickets Easily through i-dig," Ohio Call Center, summer 2011, 3 pages.
- England & Wales before Udig Users Manual v 1.0.0, www.beforeudig.com.uk, original publication date unknown, retrieved Sep. 7, 2011, 22 pages.
- IOWA One Call, Design Request System Tutorial, <https://docs.google.com/viewer?a=v&pid=explorer&chrome=true&srcid=OBzflsq-1kKARMzJjYTBjZDEtNTJiYy00YTJmLTJhZjMjY2FkZjZlZWNhNDZi&hi=en&authkey=Clq6zKAN>, original publication dated unknown, retrieved Nov. 16, 2011, 32 pages.
- IRTHNet GIS, http://www.irth.com/index.php?option=com_content&view=article&id=90&Itemid=73, printed Jul. 30, 2010, 1 page.
- ITC, A guide to using the ITC system, New Jersey One Call Concepts, Inc., <http://www.nj1-call.org/docs/NJ%20ITIC%20Manual.pdf>, original publication date unknown, retrieved Nov. 16, 2011, 33 pages.
- KANSAS One Call Excavator Newsletter, fall 2006, 4 pages, <http://www.kansasonecall.com/excavators/newsletter/>.
- KANSAS One Call Excavator Newsletter, winter 2005, 4 pages, <http://www.kansasonecall.com/excavators/newsletter/>.
- New Zealand before Udig Users Manual, <http://www.beforeudig.co.nz/images/stories/beforeudig%20online%20system%20update%20v.1.1.pdf> original publication dated unknown, retrieved Sep. 7, 2011, 3 pages.
- Notice of Allowance dated Nov. 15, 2011 from U.S. Application No. 13/028,687.
- Office Action dated Aug. 5, 2011 from U.S. Appl. No. 12/475,935.
- Office Action dated Sep. 29, 2011 from U.S. Appl. No. 12/355,222.
- Office Action dated Sep. 29, 2011 from U.S. Appl. No. 12/366,853.
- Office Action dated Oct. 3, 2011 from Canadian Application No. 2,718,877.
- Office Action dated Oct. 18, 2011 from U.S. Appl. No. 12/355,272.
- Office Action dated Nov. 7, 2011 from U.S. Appl. No. 12/422,364.
- Office Action dated Nov. 8, 2011 from U.S. Appl. No. 12/050,555.
- Office Action dated Nov. 8, 2011 from U.S. Appl. No. 12/239,386.
- Office Action dated Nov. 9, 2011 from U.S. Appl. No. 12/239,414.
- Office Action dated Nov. 10, 2011 from U.S. Appl. No. 12/355,300.
- Office Action dated Oct. 5, 2011 from U.S. Appl. No. 12/422,372.
- Office Action dated Sep. 14, 2011 from U.S. Appl. No. 12/475,924.
- One Call Concepts Locating Services, Inc., Point Positive Utility Mapping & GIS, <http://www.oocls.com/Default.aspx?content=pointpositive>, original publication dated unknown, retrieved Sep. 21, 2011, 1 page.
- PELICAN Corp., before Udig mobile, http://www.pelicancorp.com/index.php?option=com_content&view=article&id=145&Itemid=133, original publication dated unknown, printed Aug. 30, 2011, 1 page.
- PELICAN Corp., DigSAFE OneCall Key Capabilities, http://www.pelicancorp.com/index.php?option=com_content&view=article&id=104&Itemid=121, original publication date unknown, printed Aug. 30, 2011, 2 pages.
- PELICAN Corp., DigSAFE Pro Automated Plan Response Server, http://www.pelicancorp.com/index.php?option=com_content&view=article&id=48&Itemid=68, original publication dated unknown, printed Aug. 30, 2011, 2 pages.
- PELICAN Corp., DigSAFE Pro Automation Workflow, http://www.pelicancorp.com/index.php?option=com_content&view=article&id=119&Itemid=124, original publication dated unknown, printed Aug. 30, 2011, 2 pages.
- PELICAN Corp., DigSAFE Pro New and Updated features for version 2.4, http://www.pelicancorp.com/index.php?option=com_content&view=article&id=151&Itemid=91, original publication dated unknown, printed Aug. 30, 2011, 2 pages.
- PELICAN Corp., How before Udig works, http://www.pelicancorp.com/index.php?option=com_content&view=article&id=114&Itemid=105, original publication date unknown, printed Aug. 30, 2011, 1 page.

- PELICAN Corp., Using beforeUdig, http://www.pelicancorp/index.php?option=com_content&view=article&id=115&Itemid=106, original publication date unknown, printed Aug. 30, 2011, 1 page.
- Schall, G. et al., "Virtual Redlining for Civil Engineering in Real Environments," IEEE International Symposium on Mixed and Augmented Reality Sep. 15-18, 2008, Cambridge, UK, 4 pages.
- Singapore beforeUdig Frequently Asked Questions, http://www.beforeudig.com/sg/index.php?option=com_content&view=article&id=10, original publication dated unknown, retrieved Nov. 29, 2011, 2 pages.
- USA North, "Damage Prevention Update," Jun. 2011 Newsletter, <http://www.usanorth.org/2011JuneFinal.pdf>, 4 pages.
- U.S. Appl. No. 13/528,164, filed Jun. 20, 2012, Nielsen et al.
- U.S. Appl. No. 13/543,359, filed Jul. 6, 2012, Nielsen et al.
- Bernhardsen, T., "Geographic Information Systems," 2007, <http://onlinelibrary.wiley.com>.
- Corrected Notice of Allowability dated Jun. 8, 2012 from U.S. Appl. No. 12/366,853.
- Dockter, L., Development of an Underground Utility Damage Prevention Plan (UUDPP) for Company XYZ, The Graduate College, University of Wisconsin-Stout, 2008, <http://www2.uwstout.edu/content/lib/thesis/2008/2008dockterl.pdf>.
- Notice of Allowability dated Jun. 8, 2012 from U.S. Appl. No. 12/355,222.
- Notice of Allowance dated Apr. 11, 2012 from U.S. Appl. No. 12/355,222.
- Notice of Allowance dated May 8, 2012 from U.S. Appl. No. 12/366,853.
- Notice of Allowance dated Jun. 28, 2012 from U.S. Appl. No. 12/050,555.
- Notice of Allowance dated Jul. 11, 2012 from U.S. Appl. No. 12/355,300.
- Notice of Allowance dated Aug. 21, 2012 from U.S. Appl. No. 12/355,272.
- Notice of Allowance dated Aug. 23, 2012 from U.S. Appl. No. 12/239,366.
- Notice of Allowance dated Aug. 24, 2012 from U.S. Appl. No. 12/475,935.
- Office Action dated Mar. 26 2012 from U.S. Appl. No. 12/422,364.
- Office Action dated Mar. 28, 2012 from U.S. Appl. No. 12/475,956.
- Office Action dated Apr. 2, 2012 from Canadian Application No. 2,718,877.
- Office Action dated Apr. 16, 2012 from U.S. Appl. No. 12/475,935.
- Office Action dated May 3, 2012 from U.S. Appl. No. 12/050,555.
- Office Action dated May 4, 2012 from U.S. Appl. No. 12/239,414.
- Office Action dated May 15, 2012 from U.S. Appl. No. 12/239,366.
- Office Action dated May 25, 2012 from U.S. Appl. No. 12/355,300.
- Office Action dated Jun. 21, 2012 from U.S. Appl. No. 12/355,272.
- Office Action dated Jul. 18, 2012 from U.S. Appl. No. 12/239,414.
- Office Action dated Aug. 2, 2012 from Canadian Application No. 2,718,877.
- Rigaux, P., "Spatial Databases," Apr. 2002, <http://books.google.com>.
- Webopedia—What is a Database, <http://www.webopedia.com/TERM/D/database.html>, original publication date unknown, retrieved Apr. 24, 2012.
- Corrected Notice of Allowability dated Oct. 12, 2012 from U.S. Appl. No. 12/355,300.
- Notice of Allowability dated Sep. 17, 2012 from U.S. Appl. No. 12/355,272.
- Notice of Allowance dated Oct. 22, 2012 from U.S. Appl. No. 12/475,924.

* cited by examiner

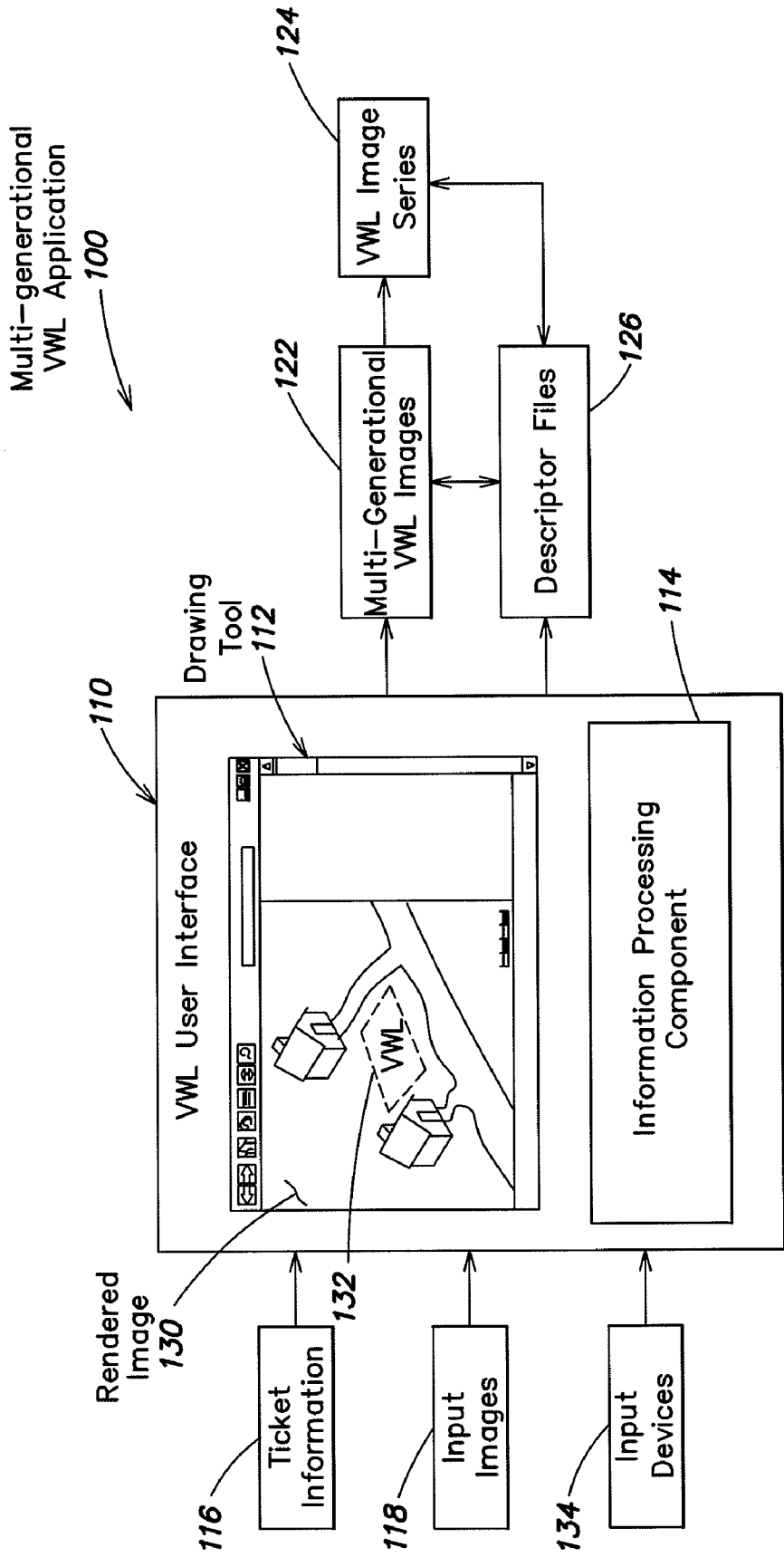


FIG. 1

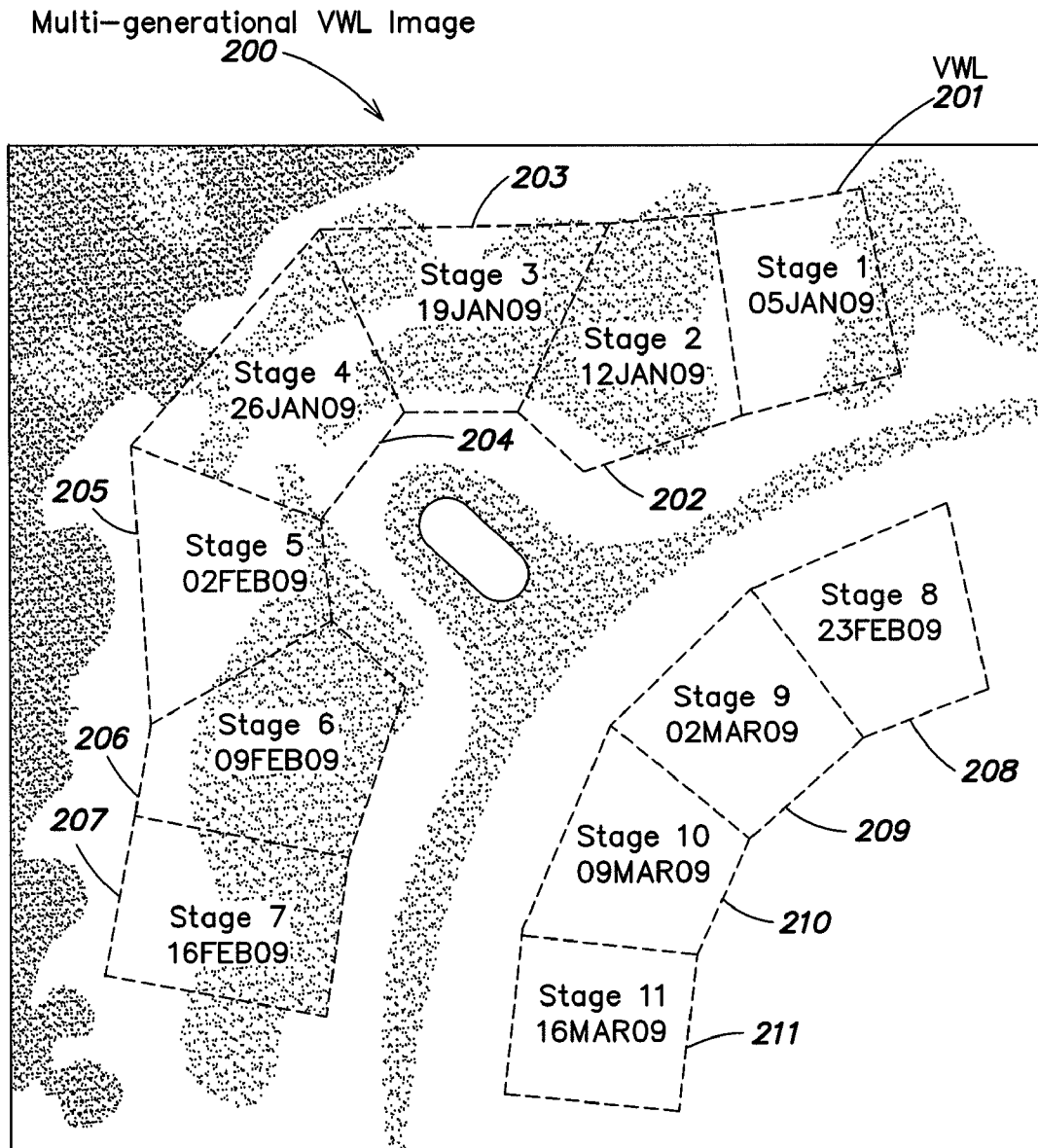


FIG. 2

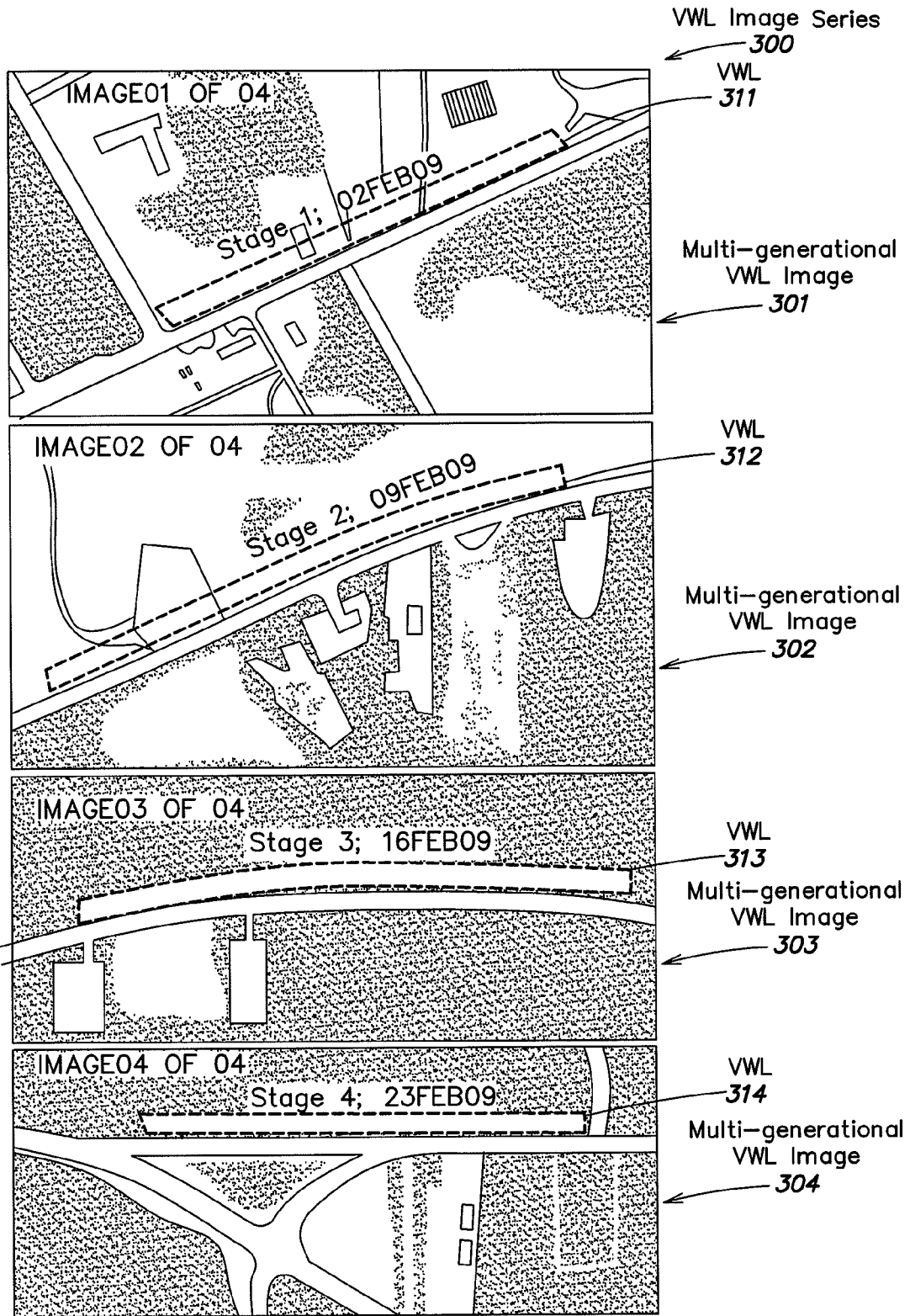


FIG. 3

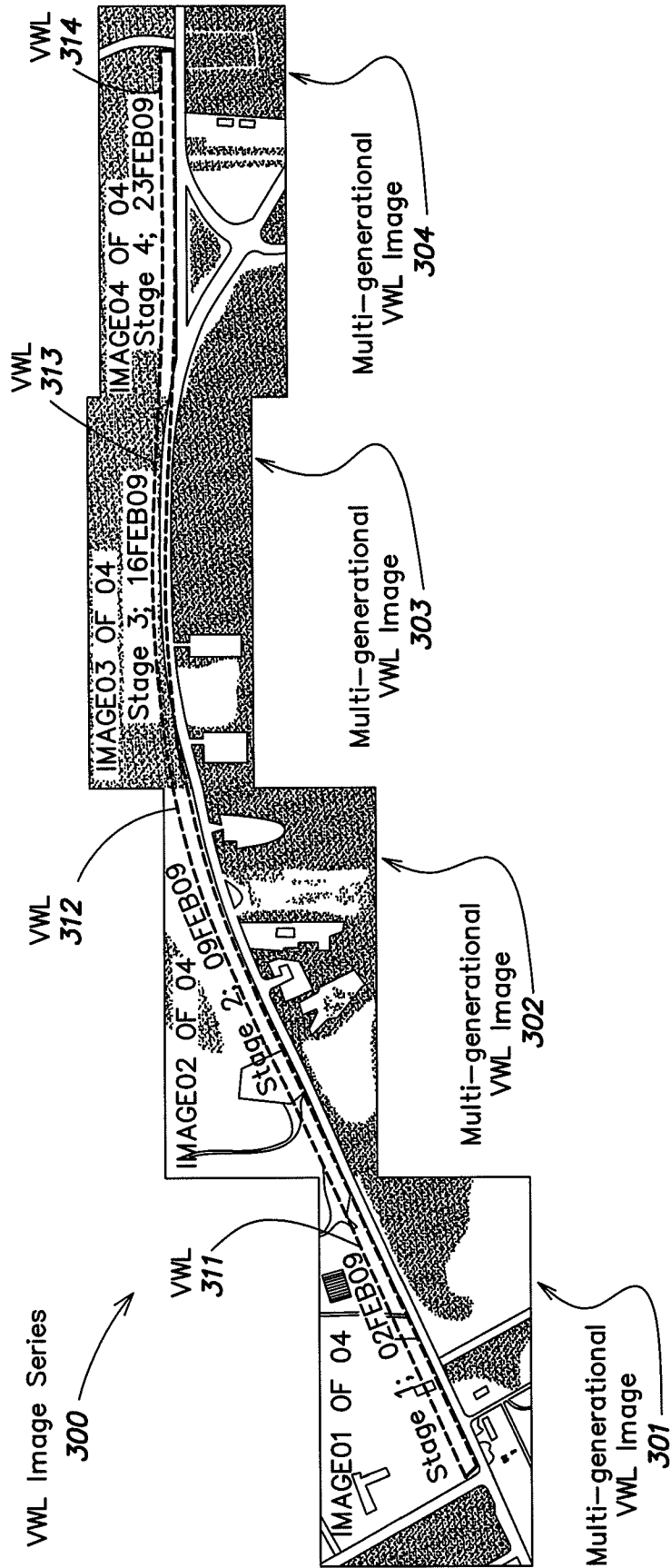


FIG. 4

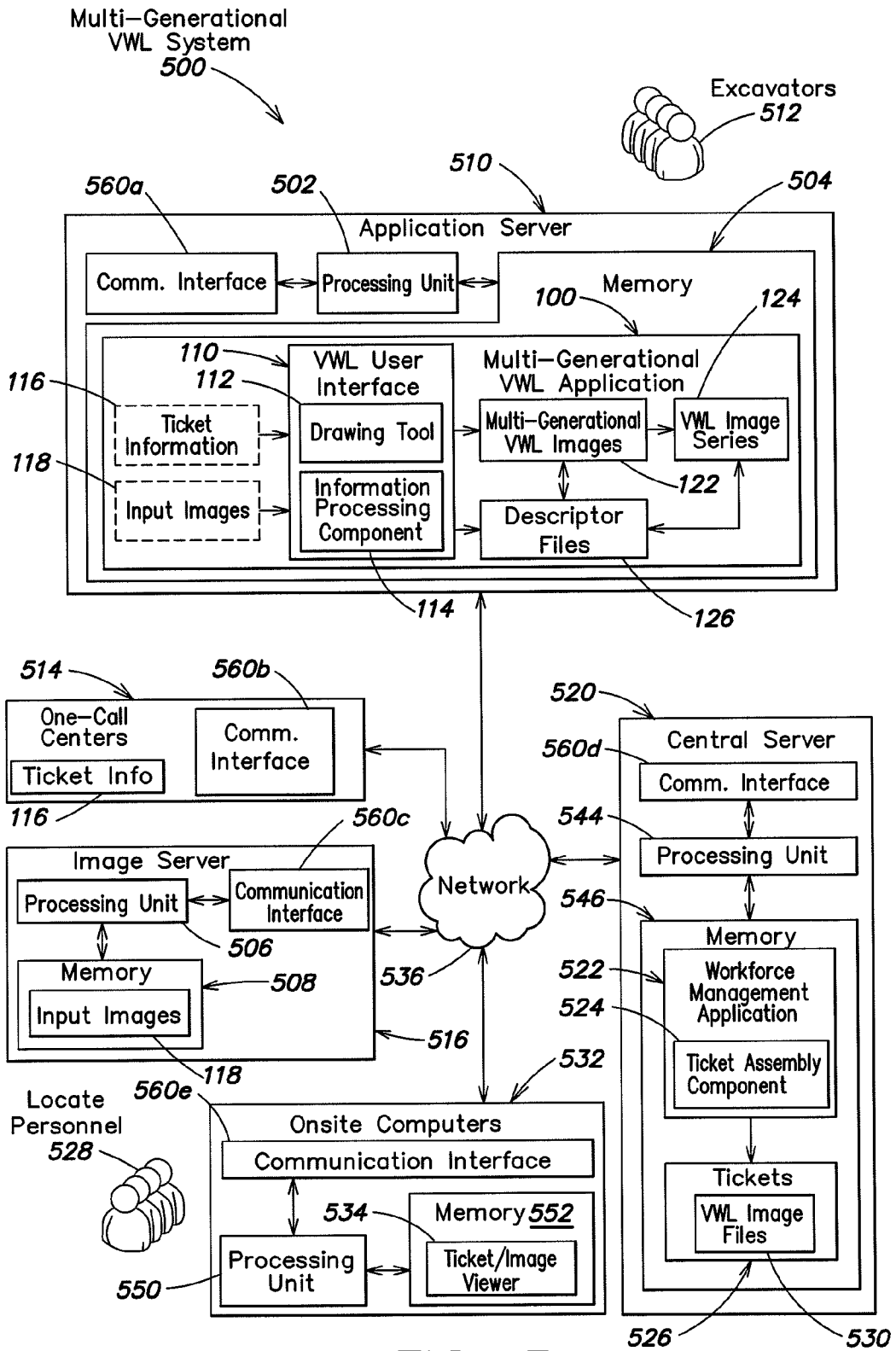


FIG. 5

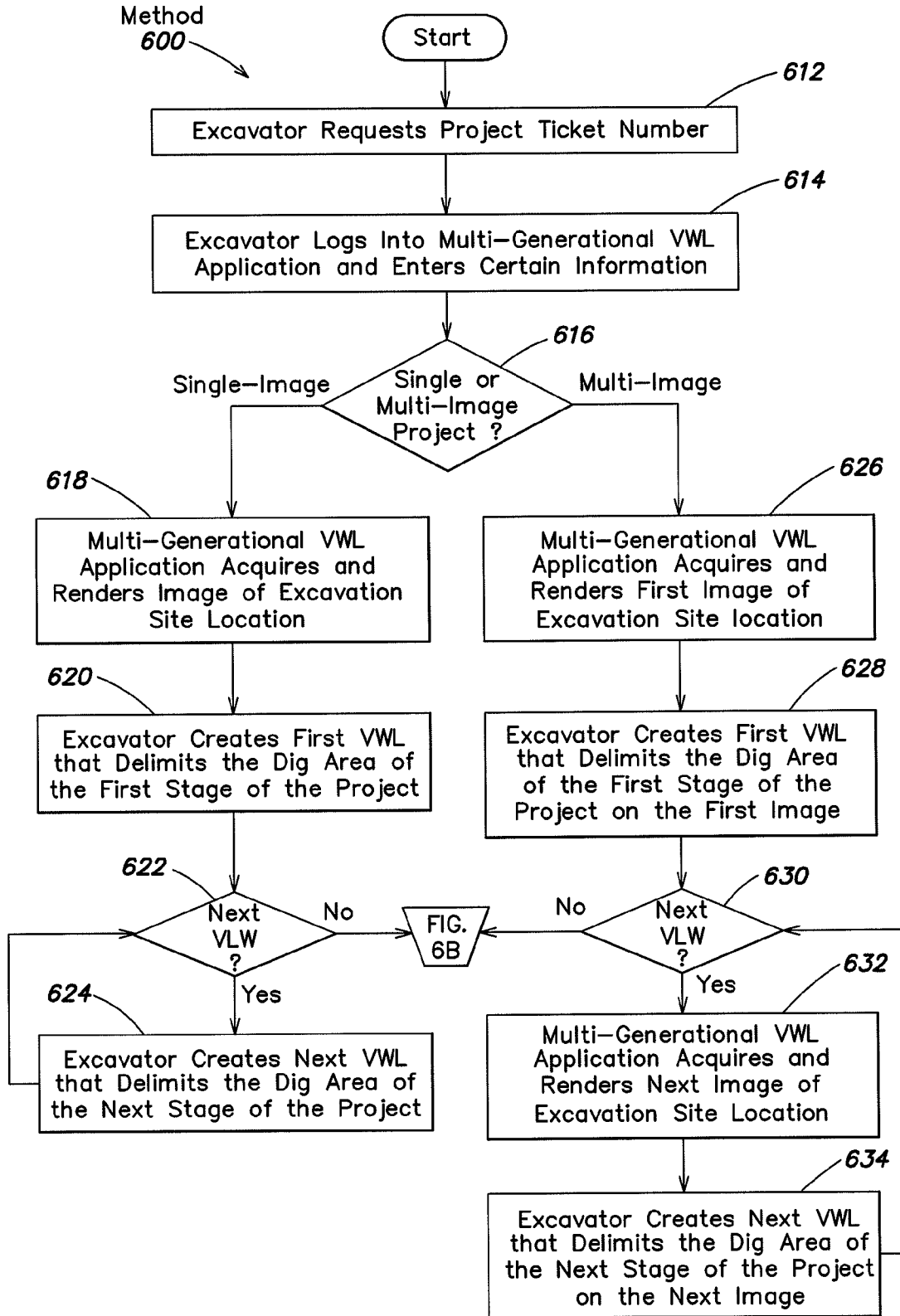


FIG. 6A

Method 600
(Continued)

FIG.
6A

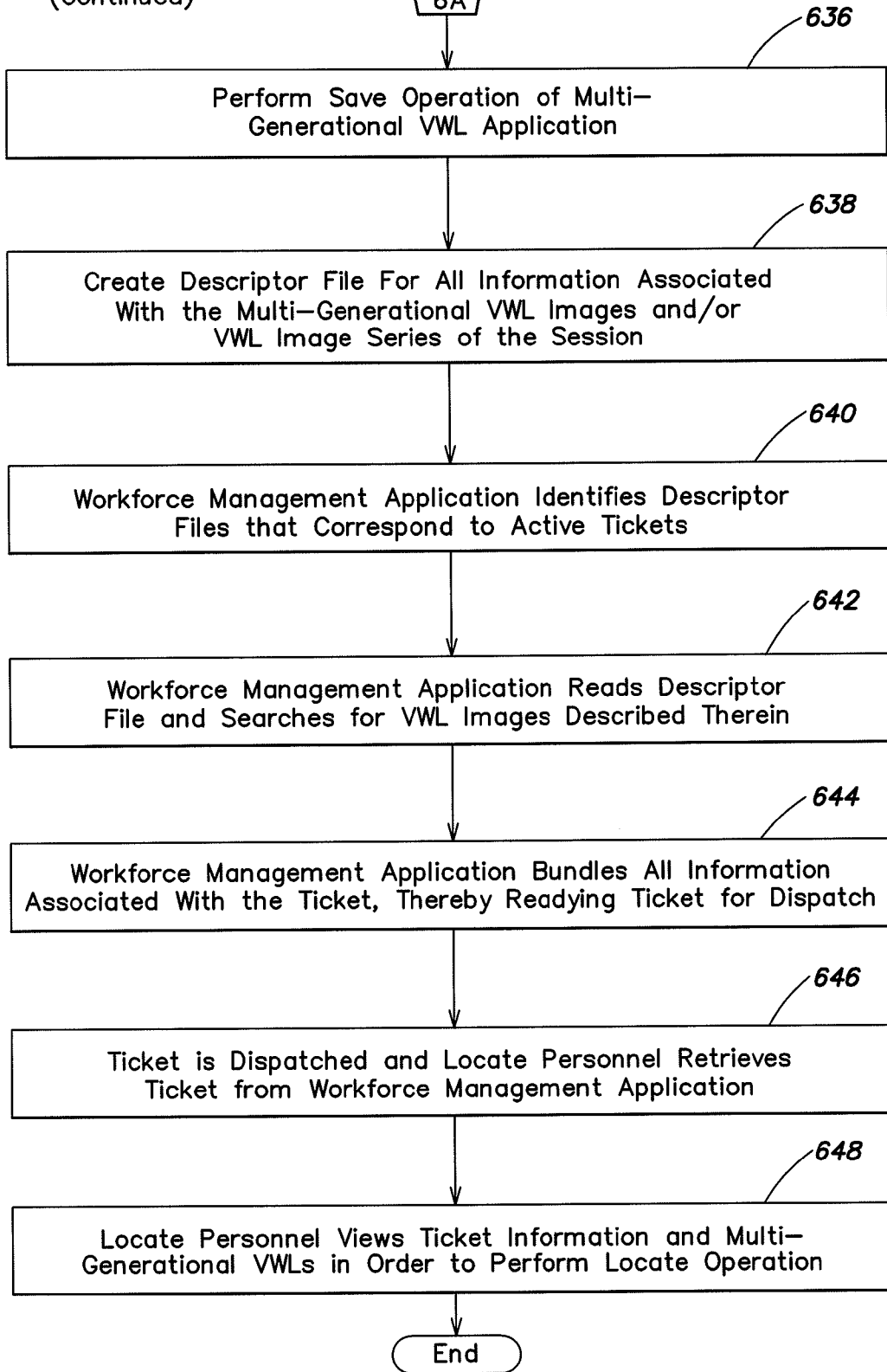
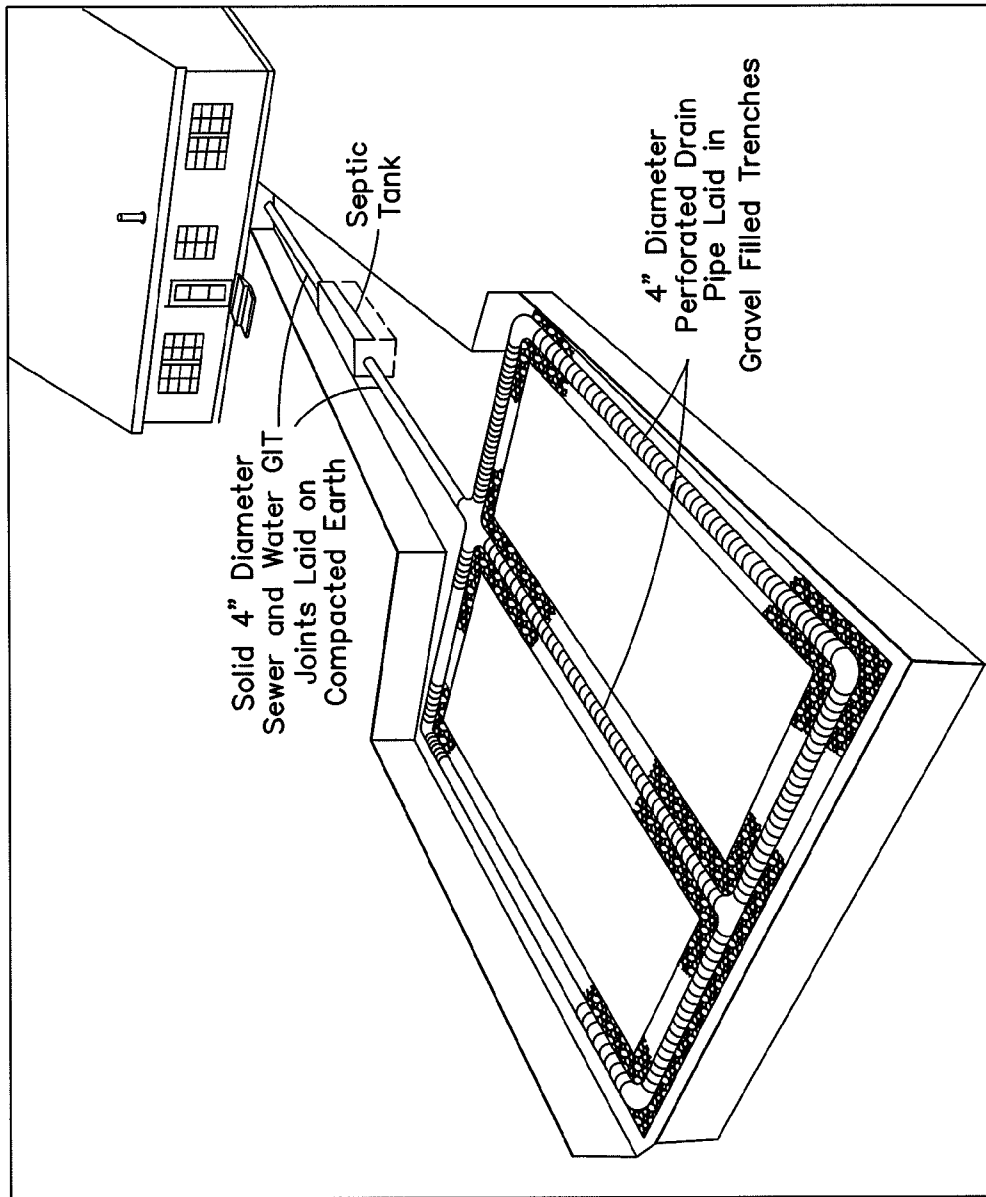


FIG. 6B



700

FIG. 7

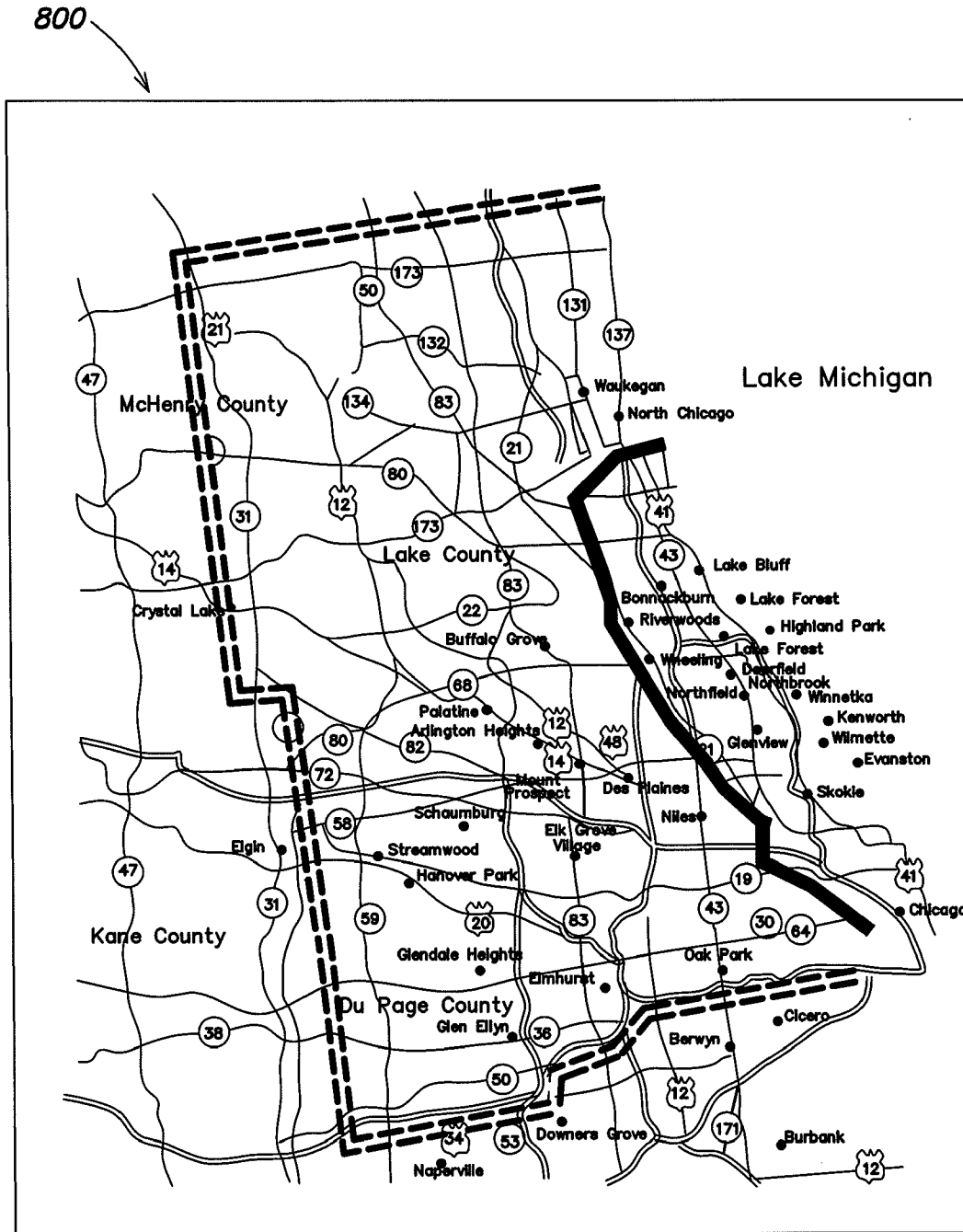


FIG. 8

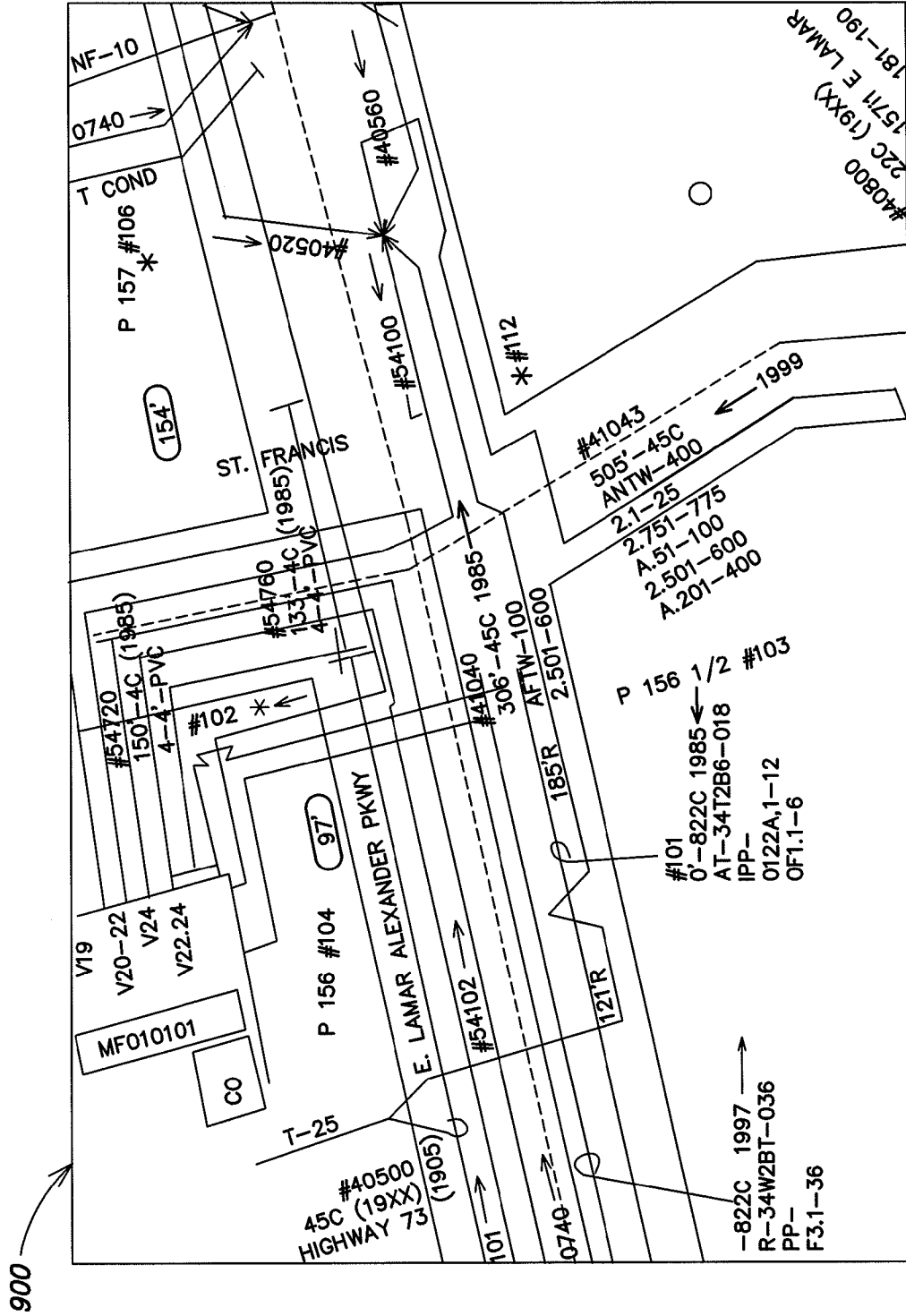


FIG. 9

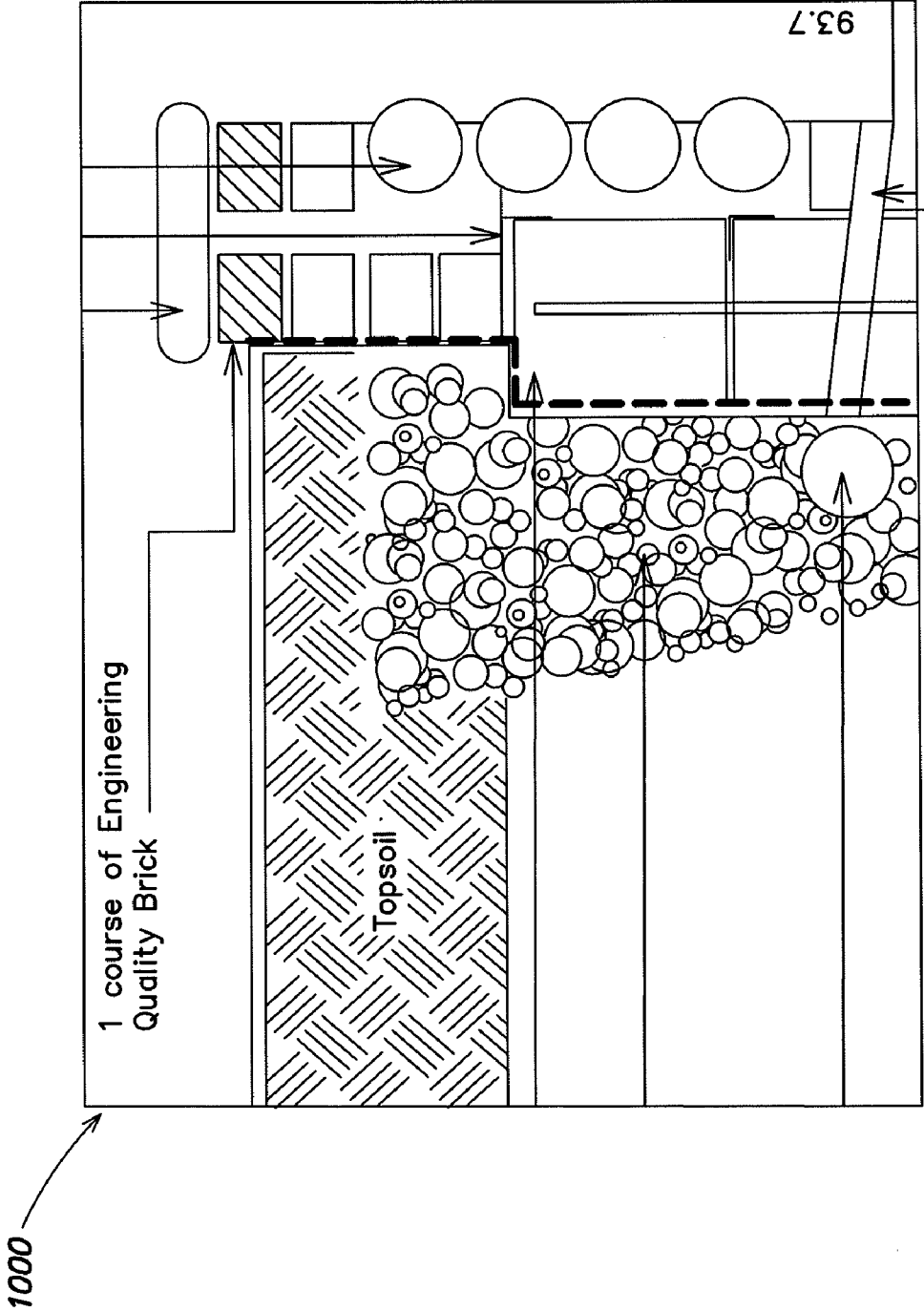


FIG. 10

1100

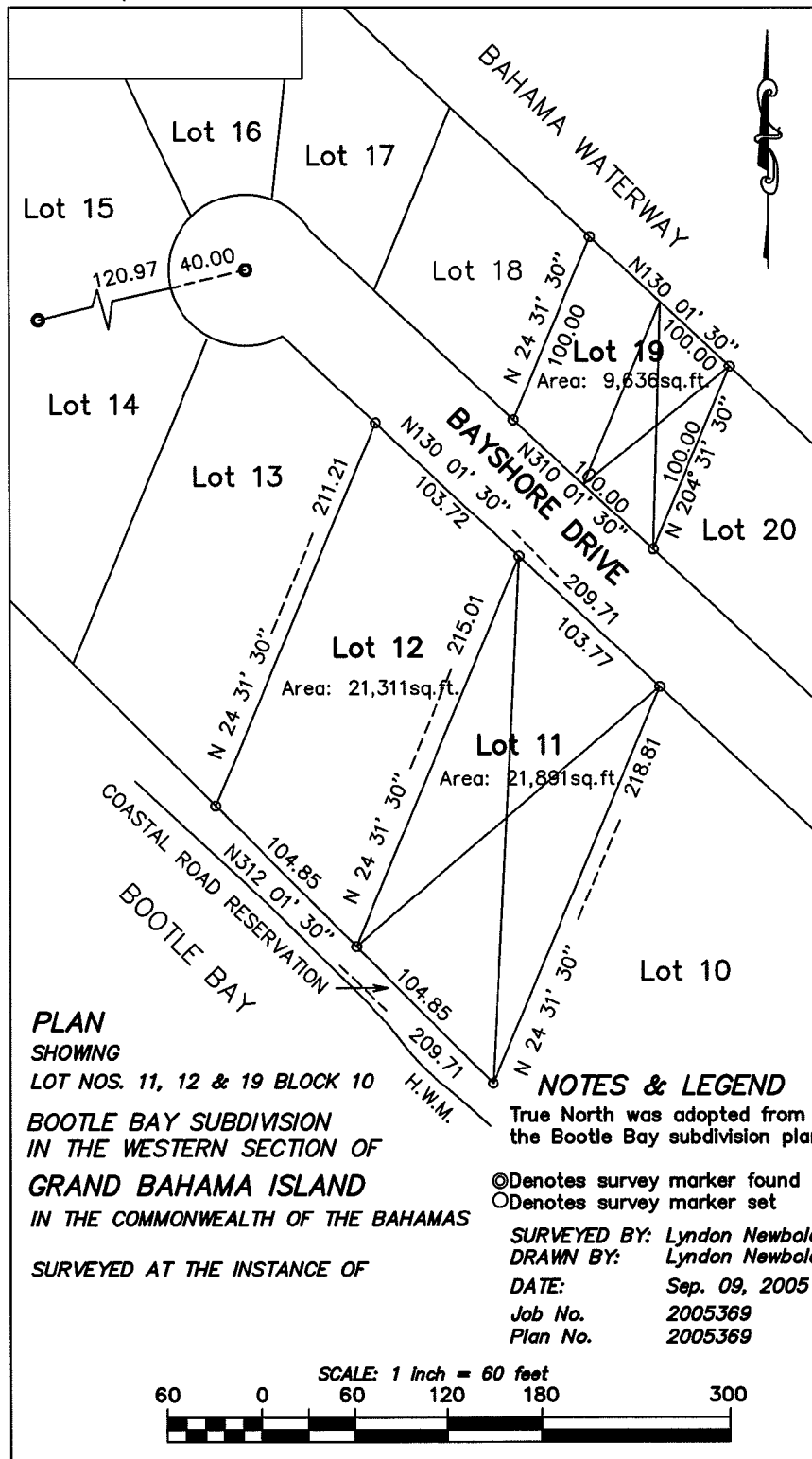


FIG. 11

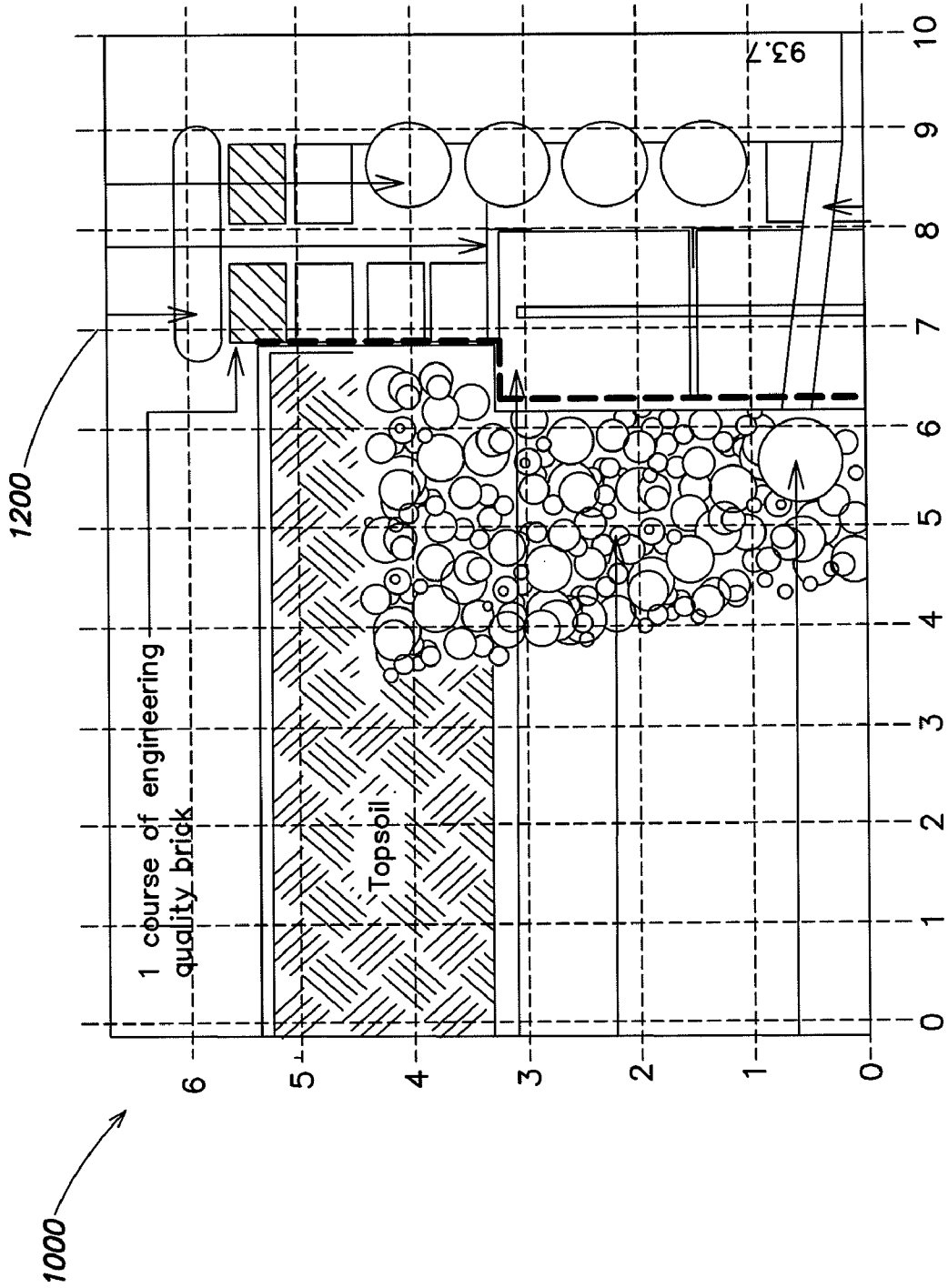


FIG. 12

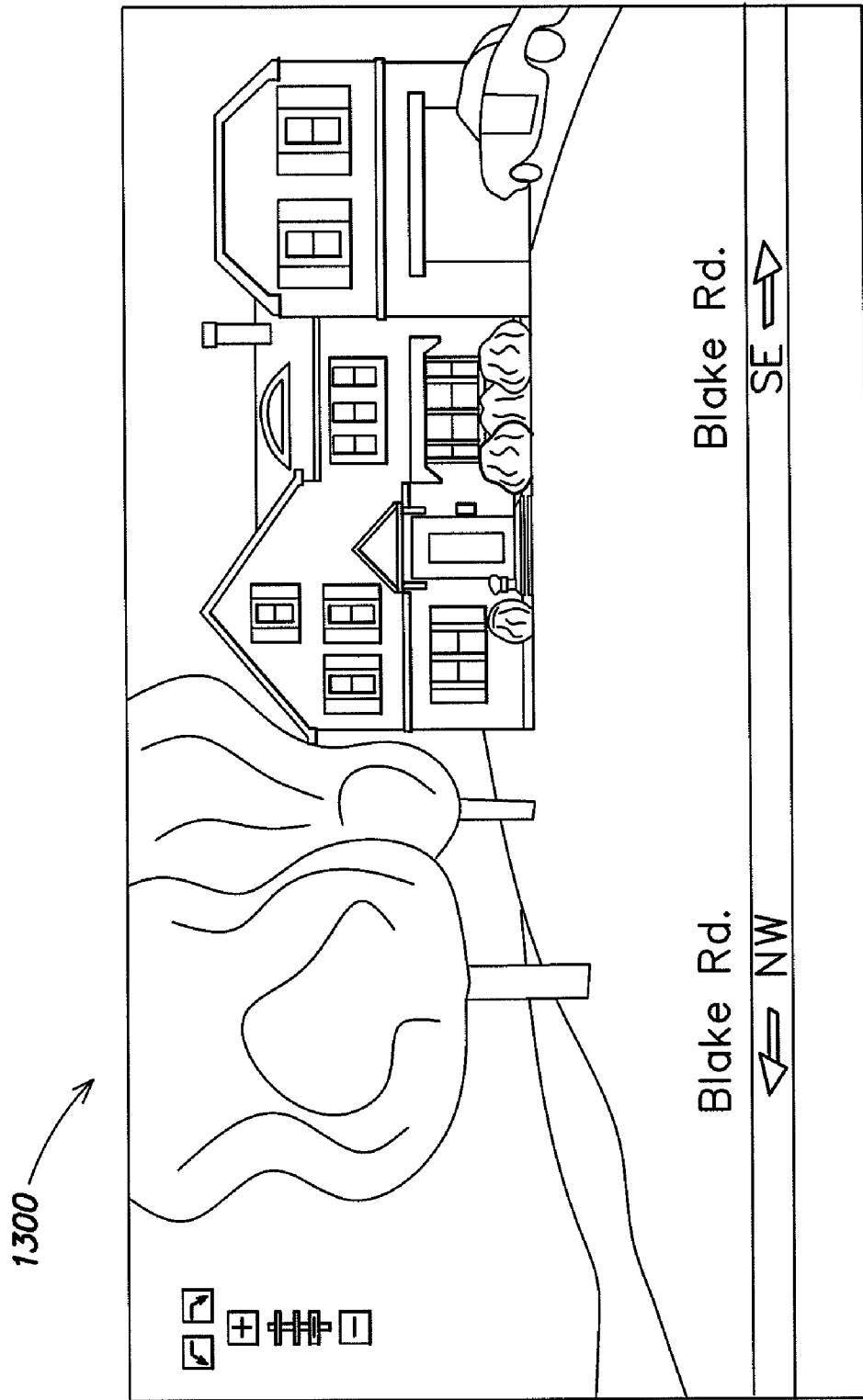


FIG. 13

**VIRTUAL WHITE LINES (VWL) FOR
DELIMITING PLANNED EXCAVATION SITES
OF STAGED EXCAVATION PROJECTS**

CROSS-REFERENCE TO RELATED
APPLICATIONS

This application claims the benefit, under 35 U.S.C. §119(e), of U.S. Provisional Application Ser. No. 61/151,769, entitled "MULTI-GENERATIONAL VIRTUAL WHITE LINES (VWL) FOR DELIMITING PLANNED EXCAVATION SITES OF STAGED EXCAVATION PROJECTS," filed on Feb. 11, 2009, which is hereby incorporated herein by reference in its entirety.

BACKGROUND

Excavators are required to notify underground facility owners in advance of their excavation activities and to describe and communicate the geographic area of those activities to the underground facility owners. As a result, excavators may submit a work order (i.e., locate request or ticket) to, for example, a one-call center, which serves as notification to underground facility owners. A locate request (or ticket) may be any communication or instruction to perform a locate operation at a certain dig area, which is any specified geographic area within which excavation may occur. One call centers may receive locate requests from excavators via electronic delivery or verbally through a telephone conversation between the excavator and a human call center operator. Whether communicated electronically or verbally, excavators must describe the planned geographic locations of dig areas. This description may be ultimately reduced to text, which, along with other data about a locate request, is communicated to the appropriate locate service provider.

Textual descriptions of dig areas can be very imprecise as to exact physical locations. In addition, addresses which are provided may be unclear, indicating only cross streets and vague descriptions of the extent of the dig area. Therefore, when a locate request is submitted by an excavator, it may be beneficial for the excavator to supplement the locate request with a visit to the site of the dig area for the purpose of delimiting and/or otherwise indicating the particular geographic location of the proposed excavation. For example, marks may be used to physically delimit a dig area. These marks may consist of chalk or paint that is applied to the surface of the ground, and are generally known as "white lines." The delimited dig area indicates to a locate technician the extent of the boundaries where a locate operation is to be performed according to the locate request that was submitted by the excavator.

However, the use of these physical white lines to physically delimit the dig area may be limited. For example, these physical white lines provide only a temporary indication of the dig area, as the physical white lines may deteriorate or be eliminated over time by such events as precipitation, excessive pedestrian or vehicle traffic, erosion, the excavation process, or numerous other events. Therefore, a need exists for improved ways of delimiting and/or otherwise indicating the proposed excavation site in a more permanent and/or reproducible manner.

Further, certain excavation projects may be suitably large to require that locate operations be performed in multiple stages and/or phases over a period of time. In one example, an excavation project along several miles of a highway may be performed over several days, weeks, and/or months. In

another example, an excavation project of a large residential or commercial subdivision again may be performed over several days, weeks, and/or months. The request for locate operations with respect to a multiple-stage excavation project that spans a period of time may be submitted via multiple individual tickets. Alternatively, this request for may be submitted under a single ticket, which is hereafter referred to as a "project ticket." The locate operations with respect to multiple-stage excavation projects must be coordinated between excavators and locate personnel, such as locate technicians. For example, throughout the multiple stages of the excavation project, there may be communication between excavators and locate technicians about the location of the respective subsections of the overall dig area to be located and about the timing of the respective locate operations. Further, at each stage of the project, excavators may delimit and/or otherwise indicate the respective subsections of the overall dig area to be located using physical white lines.

Currently, with respect to multiple-stage excavation projects, the communication process between excavators and locate technicians may be poorly coordinated due to poor infrastructure and, therefore, the day-to-day activities of excavators and locate personnel may be poorly synchronized. As a result, there is a risk of locate operations occurring at the wrong subsections of the project dig area and/or at the wrong times. This leads to poor operating efficiencies and, perhaps, lost profit with respect to both excavation companies and locate companies. Furthermore, excavators may perform the planned excavation with a certain amount of uncertainty as to whether a certain locate operation of the project ticket is complete and with limited confidence that the certain locate operation of the project ticket has been performed satisfactorily. As a result, there is a certain amount of risk of damage to underground facilities.

Consequently, a need exists for improved synchronization between excavators and locate personnel with respect to multiple-stage excavation projects in order to better coordinate the day-to-day activities, thereby improving operating efficiency. Further, a need exists for improved communication mechanisms between excavators and locate personnel with respect to project tickets in order to improve efficiency; reduce uncertainty and, thereby, reduce the risk of damage to underground facilities; and improve information exchange for making better and more timely decisions with respect to allocating resources.

SUMMARY

Various embodiments of the present invention are directed to methods, apparatus and systems for creating an electronic record relating to a geographic area including one or more dig areas to be excavated or otherwise disturbed. As part of the electronic record, the dig areas are somehow identified with respect to its immediate surroundings in the geographic area. For example, to create such an electronic record, one or more input images relating to the geographic area including the dig areas may be utilized. For example, source data representing one or more input images of a geographic area including the dig area is received and/or processed so that the input image(s) may be displayed on a display device. At least one dig area is then indicated in some manner on the displayed input image(s) so as to generate one or more marked-up images constituting at least a portion of the electronic record.

In some implementations of the inventive concepts disclosed herein, the electronic record may include a variety of non-image information, such as to facilitate identification of a dig area and/or provide information concerning a multi-

stage excavation process. Such non-image information may include, for example, a text description of the dig area, an address or lot number of a property within which the dig area is located, geo-encoded information such as geographic coordinates relating to the dig area and/or various aspects of the geographic area surrounding the dig area, one or more ticket numbers, etc. The marked-up image(s) and the non-image information may be formatted in a variety of manners in the electronic record; for example, in one implementation the non-image information may be included as metadata associated with the marked-up image(s), while in other implementations the marked-up image(s) and the non-image information may be formatted as separate data sets. These separate data sets may be transmitted and/or stored separately, but may nonetheless be linked together in some manner as relating to a common electronic record.

One embodiment described herein is directed to a method for facilitating detection of a presence or an absence of at least one underground facility within a plurality of dig areas comprising a first dig area and at least one additional dig area, wherein at least a portion of the plurality of dig areas may be excavated or disturbed during excavation activities. The method comprises: A) electronically receiving source data representing at least one input image of a geographic area including the first dig area and the at least one additional dig area, wherein the first dig area corresponds to a first stage of an staged excavation project and the at least one additional dig area corresponds to at least one subsequent stage of the staged excavation project; B) processing the source data so as to display at least a portion of the at least one input image on a display device; C) adding, via at least one user input device associated with the display device, at least one first indicator to the displayed at least one input image to provide at least one indication of the first dig area and thereby generate a first generation marked-up digital image; D) adding, via the at least one user input device, at least one additional indicator to the first generation marked-up digital image to provide at least one indication of the at least one additional dig area and thereby generate a multi-generational marked-up digital image; and E) electronically transmitting and/or electronically storing information relating to the multi-generational marked-up digital image so as to facilitate the detection of the presence or the absence of the at least one underground facility within the plurality of dig areas.

Another embodiment is directed to at least one computer-readable medium encoded with instructions that, when executed by at least one processing unit, perform a method for facilitating detection of a presence or an absence of at least one underground facility within a dig area, wherein at least a portion of the dig area may be excavated or disturbed during excavation activities. The method comprises: A) electronically receiving source data representing at least one input image of a geographic area including the first dig area and the at least one additional dig area, wherein the first dig area corresponds to a first stage of an staged excavation project and the at least one additional dig area corresponds to at least one subsequent stage of the staged excavation project; B) processing the source data so as to display at least a portion of the at least one input image on a display device; C) receiving at least one first user input via at least one user input device associated with the display device; D) adding, based on the at least one first user input, at least one first indicator to the displayed at least one input image to provide at least one indication of the first dig area and thereby generate a first generation marked-up digital image; E) receiving at least one second user input via the at least one user input device; F) adding, based on the at least one second user input, at least one

additional indicator to the first generation marked-up digital image to provide at least one indication of the at least one additional dig area and thereby generate a multi-generational marked-up digital image; and G) electronically transmitting and/or electronically storing information relating to the multi-generational marked-up digital image so as to facilitate the detection of the presence or the absence of the at least one underground facility within the plurality of dig areas.

A further embodiment is directed to an apparatus for facilitating detection of a presence or an absence of at least one underground facility within a dig area, wherein at least a portion of the dig area may be excavated or disturbed during excavation activities. The apparatus comprises: a communication interface; a display device; at least one user input device; a memory to store processor-executable instructions; and a processing unit coupled to the communication interface, the display device, the at least one user input device, and the memory, wherein upon execution of the processor-executable instructions by the processing unit. The processing unit: controls the communication interface to electronically receive source data representing at least one input image of a geographic area including the first dig area and the at least one additional dig area, wherein the first dig area corresponds to a first stage of an staged excavation project and the at least one additional dig area corresponds to at least one subsequent stage of the staged excavation project; controls the display device to display at least a portion of the at least one input image; acquires at least one first user input from the at least one user input device; generates a first generation marked-up digital image including at least one first indicator overlaid on the at least one input image to provide at least one indication of the first dig area; acquires at least one second user input from the at least one user input device; generates a multi-generational marked-up digital image including at least one additional indicator overlaid on the first generation marked-up digital image to provide at least one indication of the at least one additional dig area; and further controls the communication interface and/or the memory to electronically transmit and/or electronically store information relating to the multi-generational marked-up digital image so as to facilitate the detection of the presence or the absence of the at least one underground facility within the plurality of dig areas.

Another embodiment is directed to a method for facilitating detection of a presence or an absence of at least one underground facility within a plurality of dig areas comprising a first dig area and a second dig area, wherein at least a portion of the first and second dig areas may be excavated or disturbed during excavation activities. The method comprises: A) electronically receiving first source data representing a first input image of a geographic area including a first dig area, wherein the first dig area corresponds to a first stage of an staged excavation project; B) processing the first source data so as to display at least a portion of the first input image on the display device; C) adding, via at least one user input device associated with the display device, at least one first indicator to the displayed first input image to provide at least one indication of the first dig area and thereby generate a first marked-up digital image; D) electronically receiving second source data representing a second input image of a geographic area including a second dig area, wherein the second dig area corresponds to a subsequent stage of the staged excavation project; E) processing the second source data so as to display at least a portion of the second input image on the display device; F) adding, via the at least one user input device, at least one second indicator to the displayed second input image to provide at least one indication of the second

5

dig area and thereby generate a second marked-up digital image; and G) electronically transmitting and/or electronically storing first information relating to the first marked-up digital image together with second information relating to the second marked-up digital image so as to facilitate the detection of the presence or the absence of the at least one underground facility within the first and second dig areas.

A further embodiment is directed to at least one computer-readable medium encoded with instructions that, when executed by at least one processing unit, perform a method for facilitating detection of a presence or an absence of at least one underground facility within a dig area, wherein at least a portion of the dig area may be excavated or disturbed during excavation activities. The method comprises: A) electronically receiving first source data representing a first input image of a geographic area including a first dig area, wherein the first dig area corresponds to a first stage of an staged excavation project; B) processing the first source data so as to display at least a portion of the first input image on the display device; C) receiving at least one first user input via at least one user input device associated with the display device; D) adding, based on the at least one first user input, at least one first indicator to the displayed first input image to provide at least one indication of the first dig area and thereby generate a first marked-up digital image; E) electronically receiving second source data representing a second input image of a geographic area including a second dig area, wherein the second dig area corresponds to a subsequent stage of the staged excavation project; F) processing the second source data so as to display at least a portion of the second input image on the display device; G) receiving at least one second user input via the at least one user input device; H) adding, based on the at least one second user input at least one second indicator to the displayed second input image to provide at least one indication of the second dig area and thereby generate a second marked-up digital image; and I) electronically transmitting and/or electronically storing first information relating to the first marked-up digital image together with second information relating to the second marked-up digital image so as to facilitate the detection of the presence or the absence of the at least one underground facility within the first and second dig areas.

Another embodiment is directed to an apparatus for facilitating detection of a presence or an absence of at least one underground facility within a dig area, wherein at least a portion of the dig area may be excavated or disturbed during excavation activities. The apparatus comprises: a communication interface; a display device; at least one user input device; a memory to store processor-executable instructions; and a processing unit coupled to the communication interface, the display device, the at least one user input device, and the memory, wherein upon execution of the processor-executable instructions by the processing unit. The processing unit: controls the communication interface to electronically receive first source data representing a first input image of a geographic area including a first dig area, wherein the first dig area corresponds to a first stage of an staged excavation project; controls the display device to display at least a portion of the first input image on the display device; acquires at least one first user input from the at least one user input device; generates a first marked-up digital image including at least one first indicator overlaid on the first input image to provide at least one indication of the first dig area; controls the communication interface to electronically receive second source data representing a second input image of a geographic area including a second dig area, wherein the second dig area corresponds to a subsequent stage of the staged

6

excavation project; controls the display device to display at least a portion of the second input image on the display device; acquires at least one second user input from the at least one user input device; generates a second marked-up digital image including at least one second indicator overlaid on the second input image to provide at least one indication of the second dig area; and further controls the communication interface and/or the memory to electronically transmit and/or electronically store first information relating to the first marked-up digital image together with second information relating to the second marked-up digital image so as to facilitate the detection of the presence or the absence of the at least one underground facility within the first and second dig areas.

One embodiment is directed to an apparatus for facilitating detection of a presence or an absence of at least one underground facility within a dig area, wherein at least a portion of the dig area may be excavated or disturbed during excavation activities. The apparatus comprises a communication interface; a memory to store processor-executable instructions; and a processing unit coupled to the communication interface and the memory. Upon execution of the processor-executable instructions by the processing unit, the processing unit digitally searches the memory to identify a descriptor file corresponding to a ticket; based on identifying information in the descriptor file, identifies at least one image corresponding to the ticket, the at least one image comprising at least one indication of at least one dig area; electronically bundles the at least one image with ticket information from the ticket to generate the ticket bundle; and provides the ticket bundle to at least one party associated with the at least one underground facility.

Another embodiment is directed to at least one computer-readable medium encoded with instructions that, when executed by at least one processing unit, perform a method for facilitating detection of a presence or an absence of at least one underground facility within a dig area, wherein at least a portion of the dig area may be excavated or disturbed during excavation activities. The method comprises A) digitally searching a memory to identify a descriptor file corresponding to a ticket; B) based on identifying information in the descriptor file, digitally searching for at least one image corresponding to the ticket, the at least one image comprising at least one indication of at least one dig area; C) electronically bundling the at least one image with ticket information from the ticket to generate a ticket bundle; and D) providing the ticket bundle to at least one party associated with the at least one underground facility.

A further embodiment is directed to a method for facilitating detection of a presence or an absence of at least one underground facility within at least one dig area, wherein at least a portion of the at least one dig areas may be excavated or disturbed during excavation activities. The method comprises A) digitally searching a memory to identify a descriptor file corresponding to a ticket; B) based on identifying information in the descriptor file, digitally searching for at least one image corresponding to the ticket, the at least one image comprising at least one indication of at least one dig area; C) electronically bundling the at least one image with ticket information from the ticket to generate a ticket bundle; and D) providing the ticket bundle to at least one party associated with the at least one underground facility.

Another embodiment is directed to an apparatus for facilitating detection of a presence or an absence of at least one underground facility within a dig area, wherein at least a portion of the dig area may be excavated or disturbed during excavation activities. The apparatus comprises a communication interface; a memory to store processor-executable

instructions; and a processing unit coupled to the communication interface and the memory. Upon execution of the processor-executable instructions by the processing unit, the processing unit: electronically receives, via the communication interface, at least one image corresponding to at least one ticket or at least one link to the at least one image, the at least one image comprising at least one indication of at least one dig area, and data relating to the at least one image; based on the data relating to the at least one image, identifies ticket information in the memory corresponding to the at least one ticket; electronically bundles the at least one image or the at least one link with the ticket information to generate a ticket bundle; and provides the ticket bundle, via the communication interface, to at least one party associated with the at least one underground facility.

A further embodiment is directed to at least one computer-readable medium encoded with instructions that, when executed by at least one processing unit, perform a method for facilitating detection of a presence or an absence of at least one underground facility within a dig area, wherein at least a portion of the dig area may be excavated or disturbed during excavation activities. The method comprises A) electronically receiving at least one image corresponding to at least one ticket or at least one link to the at least one image, the at least one image comprising at least one indication of at least one dig area, and data relating to the at least one image; B) based on the data relating to the at least one image, identifying ticket information corresponding to the at least one ticket; C) electronically bundling the at least one image or the at least one link with the ticket information to generate a ticket bundle; and D) providing the ticket bundle to at least one party associated with the at least one underground facility.

Another embodiment is directed to a method for facilitating detection of a presence or an absence of at least one underground facility within at least one dig area, wherein at least a portion of the at least one dig areas may be excavated or disturbed during excavation activities. The method comprises A) receiving at least one image corresponding to at least one ticket or at least one link to the at least one image, the at least one image comprising at least one indication of at least one dig area, and data relating to the at least one image; B) based on the data relating to the at least one image, identifying ticket information corresponding to the at least one ticket; C) electronically bundling the at least one image or the at least one link with the ticket information to generate a ticket bundle; and D) providing the ticket bundle to at least one party associated with the at least one underground facility.

A further embodiment is directed to an apparatus for facilitating detection of a presence or an absence of at least one underground facility within a dig area, wherein at least a portion of the dig area may be excavated or disturbed during excavation activities. The apparatus comprises a communication interface; a memory to store processor-executable instructions; and a processing unit coupled to the communication interface and the memory. Upon execution of the processor-executable instructions by the processing unit, the processing unit: electronically receives, via the communication interface, at least one user input relating to the dig area; based on the at least one user input, renders a digital virtual white line image including at least one indicator to provide at least one indication of the dig area with respect to a geographic area; and transmits a limited access file comprising information relating to the digital virtual white line image, via the communication interface, to at least one party associated with the at least one underground facility so as to facilitate the detection of the presence or the absence of the at least one underground facility within the dig area.

Another embodiment is directed to a method for facilitating detection of a presence or an absence of at least one underground facility within a dig area, wherein at least a portion of the dig area may be excavated or disturbed during excavation activities. The method comprises A) electronically receiving at least one user input relating to the dig area; B) based on the at least one user input, rendering a digital virtual white line image including at least one indicator to provide at least one indication of the dig area with respect to a geographic area; and C) electronically transmitting a limited access file comprising information relating to the digital virtual white line image to at least one party associated with the at least one underground facility so as to facilitate the detection of the presence or the absence of the at least one underground facility within the dig area.

A further embodiment is directed to at least one computer-readable medium encoded with instructions that, when executed by at least one processing unit, perform a method for facilitating detection of a presence or an absence of at least one underground facility within a dig area, wherein at least a portion of the dig area may be excavated or disturbed during excavation activities. The method comprises A) electronically receiving at least one user input relating to the dig area; B) based on the at least one user input, rendering a digital virtual white line image including at least one indicator to provide at least one indication of the dig area with respect to a geographic area; and C) electronically transmitting a limited access file comprising information relating to the digital virtual white line image to at least one party associated with the at least one underground facility so as to facilitate the detection of the presence or the absence of the at least one underground facility within the dig area.

This application incorporates by reference the following U.S. published patent applications. U.S. publication no. 2008-0228294-A1, published Sep. 18, 2008, filed Mar. 13, 2007, and entitled "Marking System and Method With Location and/or Time Tracking;" and U.S. publication no. 2008-0245299-A1, published Oct. 9, 2008, filed Apr. 4, 2007, and entitled "Marking System and Method." Further, this application incorporates by reference the following co-pending U.S. patent application: U.S. patent application Ser. No. 12/422,364, entitled "VIRTUAL WHITE LINES (VWL) APPLICATION FOR INDICATING A PLANNED EXCAVATION OR LOCATE PATH," filed on Apr. 13, 2009.

It should be appreciated that all combinations of the foregoing concepts and additional concepts discussed in greater detail below (provided such concepts are not mutually inconsistent) are contemplated as being part of the inventive subject matter disclosed herein. In particular, all combinations of claimed subject matter appearing at the end of this disclosure are contemplated as being part of the inventive subject matter disclosed herein. It should also be appreciated that terminology explicitly employed herein that also may appear in any disclosure incorporated by reference should be accorded a meaning most consistent with the particular concepts disclosed herein.

BRIEF DESCRIPTION OF THE DRAWINGS

The drawings are not necessarily to scale, emphasis instead generally being placed upon illustrating the principles of the invention.

The objects and features of the present disclosure, which are believed to be novel, are set forth with particularity in the appended claims. The present disclosure, both as to its organization and manner of operation, together with further objectives and advantages, may be best understood by reference to

the following description, taken in connection with the accompanying drawings as set forth below:

FIG. 1 illustrates a functional block diagram of a multi-generational virtual white lines application for delimiting planned excavation sites of staged excavation projects, according to the present disclosure;

FIG. 2 illustrates a view of a multi-generational virtual white lines image, which shows the one image-to-multiple virtual white lines scenario of the multi-generational virtual white lines application, according to the present disclosure;

FIGS. 3 and 4 illustrate views of a virtual white lines image series, which shows the multiple image-to-multiple virtual white lines scenario of the multi-generational virtual white lines application, according to the present disclosure;

FIG. 5 illustrates a functional block diagram of a multi-generational virtual white lines system that includes the multi-generational virtual white lines application, according to the present disclosure;

FIGS. 6A and 6B illustrate a flow diagram of an example of a method of operation and/or of using the multi-generational virtual white lines system, according to the present disclosure;

FIG. 7 shows a sketch 700, representing an exemplary input image;

FIG. 8 shows a map 800, representing an exemplary input image;

FIG. 9 shows a facility map 900, representing an exemplary input image;

FIG. 10 shows a construction/engineering drawing 1000, representing an exemplary input image;

FIG. 11 shows a land survey map 1100, representing an exemplary input image;

FIG. 12 shows a grid 1200, overlaid on the land survey map 1100 of FIG. 11, representing an exemplary input image; and

FIG. 13 shows a street level image 1300, representing an exemplary input image.

DETAILED DESCRIPTION

Following below are more detailed descriptions of various concepts related to, and embodiments of, inventive methods and apparatus according to the present disclosure for associating one or more virtual white line images with corresponding ticket information for a given excavation project. It should be appreciated that various concepts introduced above and discussed in greater detail below may be implemented in any of numerous ways, as the disclosed concepts are not limited to any particular manner of implementation. Examples of specific implementations and applications are provided primarily for illustrative purposes.

Various embodiments described herein are directed to methods, apparatus and systems for creating an electronic record relating to a geographic area including a dig area to be excavated or otherwise disturbed. The electronic record may comprise one or more virtual white line (VWL) images for delimiting one or more planned excavation sites. In some examples, the excavation projects are staged excavation projects, and the term "multi-generational" refers to the excavation stages of multiple related tickets and/or a project ticket. One or more VWL images may be created using a VWL application that allows a user to generate (e.g., draw) one or more virtual white lines for electronically delimiting one or more dig areas. The virtual white line(s) may be overlaid on an input image depicting a geographic area including one or more dig areas, for example. In a multistage excavation project, each of the multiple virtual white lines may be manually and/or automatically ordered and dated with respect to a

timetable of the multiple-stage excavation project. In embodiments described herein relating to multi-generational staged excavation projects, as well as in other embodiments relating to more limited excavation projects in connection with a given dig area (e.g., as described in some embodiments of methods and apparatus disclosed in U.S. Patent Publication Nos. 2008-0228294-A1 and 2008-0245299-A1, hereby incorporated herein by reference), methods and apparatus according to the present disclosure allow the image(s) and other information associated with one or more virtual white lines to be electronically bundled with the ticket information and dispatched to the locate personnel for viewing when performing the locate operation(s).

The multi-generational VWL application, system and/or method described herein may provide tools for clearly conveying information about planned excavation, such as a multiple-stage excavation project. The information may comprise, for example, the limits of one or more dig areas. The information about the planned excavation may be provided in a substantially permanent and/or reproducible manner so that the information may be referenced throughout the duration of the planned excavation. Plans for staged excavation may be documented with respect to, for example, multiple related tickets and/or project tickets.

Further, the multi-generational VWL application, system and/or method described herein may provide improved communication mechanisms between excavators and locate personnel for synchronizing staged excavation activities and locate operations. As a result, improved operating efficiency may be achieved for both excavation companies and locate service providers. Improved information exchange allows excavation companies and locate service providers to make better and more timely decisions with respect to allocating resources.

The improved tools and communication mechanisms between excavators and locate personnel may reduce or eliminate the uncertainty for excavators about the status and/or quality of locate operations, and thereby reduce or eliminate the risk of damage to underground facilities.

FIG. 1 illustrates a functional block diagram of an exemplary multi-generational VWL application 100 for delimiting planned excavation sites of staged excavation projects. Multi-generational VWL application 100 may be, for example, a web-based application that is accessible via the Internet. In another embodiment, multi-generational VWL application 100 may be a desktop application that is running on the user's local computing device.

Multi-generational VWL application 100 may include, but is not limited to, a VWL user interface 110 that may further include a drawing tool 112 and an information processing component 114. Certain inputs to the VWL application may include, but are not limited to, one-call center information 116, input images 118, and user inputs received via one or more user input devices 134. Certain outputs of multi-generational VWL application 100 may include, but are not limited to, one or more multi-generational VWL images 122 and/or a collection of multi-generational VWL images 122 that are arranged in a series, such as VWL image series 124, along with a corresponding set of descriptor files 126.

VWL user interface 110 may be a web-based graphical user interface (GUI) that is accessible via the Internet. VWL user interface 110 may provide a secure login function, which allows users, such as excavators and/or system administrators, to access the functions of multi-generational VWL application 100. In one example, excavators may login to multi-generational VWL application 100 via VWL user interface 110 and enter user-specific information which may be saved

11

in, for example, a user profile. The user-specific information may include, for example, the excavators name, user-ID, and excavation company name.

Drawing tool **112** may be a drawing application, which, in excavation applications, may be used by excavators as a dig area marking tool. More specifically, drawing tool **112** may be used by the excavator to add markings to any digital image that corresponds to the geographic location of the dig area, which may be read into multi-generational VWL application **100** from input images **118**.

It should be appreciated that the multi-generational virtual white lines application described in connection with FIG. **1** is merely exemplary and that many implementations of such an application are possible. For example, the drawing application or dig area marking tool application described in each of U.S. patent application Ser. No. 12/366,853 entitled "VIRTUAL WHITE LINES FOR INDICATING PLANNED EXCAVATION SITES ON ELECTRONIC IMAGES" filed on Feb. 6, 2009, and U.S. patent application Ser. No. 12/050,555 entitled "VIRTUAL WHITE LINES FOR DELIMITING PLANNED EXCAVATION SITES" filed on Mar. 18, 2008, which are hereby incorporated by reference herein in their entireties, may be configured to create single or multi-generational virtual white line images. In addition, the user device described in each of U.S. patent application Ser. Nos. 12/366,853 and 12/050,555 may be used as a hardware interface to create the multi-generational VWL images described herein.

For purposes of the present disclosure, an input image **118** is any image represented by source data that is electronically processed (e.g., the source data is in a computer-readable format) to display the image on a display device. An input image **118** may include any of a variety of paper/tangible image sources that are scanned (e.g., via an electronic scanner) or otherwise converted so as to create source data (e.g., in various formats such as XML, PDF, JPG, BMP, etc.) that can be processed to display the input image **118**. An input image **118** also may include an image that originates as source data or an electronic file without necessarily having a corresponding paper/tangible copy of the image (e.g., an image of a "real-world" scene acquired by a digital still frame or video camera or other image acquisition device, in which the source data, at least in part, represents pixel information from the image acquisition device).

In some exemplary implementations, input images **118** described herein may be created, provided, and/or processed by a geographic information system (GIS) that captures, stores, analyzes, manages and presents data referring to (or linked to) location, such that the source data representing the input image **118** includes pixel information from an image acquisition device (corresponding to an acquired "real world" scene or representation thereof), and/or spatial/geographic information ("geo-encoded information"). In this manner, a GIS provides a framework for data manipulation and display of images that may facilitate one or more of (a) location verification, (b) location correlation, (c) locational relationships, (d) district coding, (e) route analysis, (f) area analysis and (g) mapping/display creation, for example.

In view of the foregoing, various examples of input images and source data representing input images **118** described herein, to which the inventive concepts disclosed herein may be applied, include but are not limited to:

Manual "free-hand" paper sketches of the geographic area (which may include one or more buildings, natural or man-made landmarks, property boundaries, streets/intersections, public works or facilities such as street light-

12

ing, signage, fire hydrants, mail boxes, parking meters, etc.). FIG. **7** shows an exemplary sketch **700**;

Various maps indicating surface features and/or extents of geographical areas, such as street/road maps (e.g., map **800** of FIG. **8**), topographical maps, military maps, parcel maps, tax maps, town and county planning maps, call-center and/or facility polygon maps, virtual maps, etc. (such maps may or may not include geo-encoded information);

Facility maps illustrating installed underground facilities, such as gas, power, telephone, cable, fiber optics, water, sewer, drainage, etc. Facility maps may also indicate street-level features (streets, buildings, public facilities, etc.) in relation to the depicted underground facilities. Examples of facility maps include CAD drawings that may be created and viewed with a GIS to include geo-encoded information (e.g., metadata) that provides location information (e.g., infrastructure vectors) for represented items on the facility map. An exemplary facility map **900** is shown in FIG. **9**;

Architectural, construction and/or engineering drawings and virtual renditions of a space/geographic area (including "as built" or post-construction drawings). An exemplary construction/engineering drawing **1000** is shown in FIG. **10**;

Land surveys, i.e., plots produced at ground level using references to known points such as the center line of a street to plot the metes and bounds and related location data regarding a building, parcel, utility, roadway, or other object or installation. FIG. **11** shows an exemplary land survey map **1100**;

A grid (a pattern of horizontal and vertical lines used as a reference) to provide representational geographic information (which may be used "as is" for an input image **118** or as an overlay for an acquired "real world" scene, drawing, map, etc.). An exemplary grid **1200**, overlaid on construction/engineering drawing **1000**, is shown in FIG. **12**. It should be appreciated that the grid **1200** may itself serve as the input image (i.e., a "bare" grid), or be used together with another underlying input image;

"Bare" data representing geo-encoded information (geographical data points) and not necessarily derived from an acquired/captured real-world scene (e.g., not pixel information from a digital camera or other digital image acquisition device). Such "bare" data may be nonetheless used to construct a displayed input image **118**, and may be in any of a variety of computer-readable formats, including XML); and

Photographic renderings/images, including street level (see e.g., street level image **1300** of FIG. **13**), topographical, satellite, and aerial photographic renderings/images, any of which may be updated periodically to capture changes in a given geographic area over time (e.g., seasonal changes such as foliage density, which may variably impact the ability to see some aspects of the image).

It should also be appreciated that source data representing an input image **118** may be compiled from multiple data/information sources; for example, any two or more of the examples provided above for input images and source data representing input images **118**, or any two or more other data sources, can provide information that can be combined or integrated to form source data that is electronically processed to display an image on a display device.

Once read into multi-generational VWL application **100** from input images **118**, a digital image may be rendered in the viewing window of drawing tool **112**. In one example, FIG. **1**

13

shows a rendered image **130** that is displayed in the viewing window of drawing tool **112**. The markings that the excavator adds to rendered image **130** are used to graphically delimit and/or otherwise indicate the dig area. For example and referring to FIG. 1, drawing tool **112** may be used to superimpose over or otherwise display one or more “virtual white lines” (VWL) **132** for delimiting and/or otherwise indicating the planned excavation upon rendered image **130**.

Creating a “single-generational” VWL image is described in U.S. patent application Ser. Nos. 12/366,853 and 12/050,055 and may involve the steps of sending an image to a user via a network; receiving a marked-up version of the image from the user via the network that includes one or more virtual white lines added to the image that indicate a dig area in which excavation is planned; and providing the marked-up version of the image, via one of an electronic or tangible delivery system, to another entity. The virtual white lines may include two-dimensional (2D) drawing shapes, shades, points, lines, symbols, coordinates, data sets, or other indicators to indicate on a digital image the dig area in which excavation is to occur. A drawing tool may be provided that allows the user to provide one or more dig area indicators to indicate the dig area (e.g., delimit or mark lines that indicate a line or path of planned excavation) and to enter textual information on the image. The marked-up image may be saved as a VWL image, associated with a certain locate request (or ticket), transmitted to locate personnel, and used by locate personnel during locate operations with respect to the line or path of planned excavation.

In addition to creating “single-generational” VWL images, the multi-generational VWL application **100** described herein provides the capability to create multi-generational virtual white lines for delimiting and/or otherwise indicating planned excavation with respect to multiple-stage excavation projects. For example, the virtual white lines may indicate a line or path of planned excavation with respect to multiple-stage excavation projects.

As used herein, “virtual white lines” (VWLs) may include lines, such as single-segment lines, multiple-segment lines, substantially straight lines, curved lines, and the like; 2D drawing shapes; shades; points; symbols; coordinates; data sets; or other indicators to delimit and/or otherwise indicate on an image one or more dig areas in which excavation is to occur. With respect to multiple-stage excavation projects, examples of multi-generational virtual white lines that may be created using drawing tool **112** are shown with reference to FIGS. 2, 3, and 4.

Information processing component **114** may be a software component of multi-generational VWL application **100** (e.g., a processing unit executing processor-executable instructions stored in memory) for entering and/or associating other information with the multi-generational virtual white lines that are created using drawing tool **112**. This information may include excavator-specific, one-call center-specific, and/or other ticket information.

Ticket information **116** provides a source of information that may be processed using VWL user interface **110** of multi-generational VWL application **100**. For example, ticket information **116** may include the geographic location(s) of one or more dig areas designated for excavation, for which a locate operation is being requested. Ticket information **116** generally is provided by a one-call center and may include one or more addresses of dig areas, or other location information (e.g., GPS latitude and longitude coordinates). Also, the ticket information **116** may specify a project or multi-stage excavation. Based on address and/or other information,

14

the ticket information **116** may be filtered when presented to the user of multi-generational VWL application **100**.

When an excavator completes the sketch of the virtual white lines of the proposed dig area, e.g., VWL **132** on rendered image **130**, the marked-up image may be saved as one or more multi-generational VWL images **122**. One or more multi-generational VWL images **122** may be associated with multiple related tickets and/or a project ticket, as discussed in greater detail below. In particular, multiple multi-generational VWL images **122** that are associated with staged excavation may be aggregated and saved as a VWL image series **124**.

In one exemplary implementation, each multi-generational VWL image **122** and/or each multi-generational VWL image **122** of a VWL image series **124** may have one or more corresponding descriptor files **126**. When each VWL image series **124** is saved, the corresponding descriptor files **126** include(s) information about the multi-generational VWL images **122** of the VWL image series **124**. For example and with respect to multiple-stage excavation projects, each descriptor file **126** may include, for example, the ticket numbers, the names of multi-generational VWL images **122** of the VWL image series **124**, the stage number and stage date with respect to the ticket, and the like. Other information that may be included in one or more descriptor files **126** includes, but is not limited to date and time information indicating when the VWL image was created, an identifier for the creator of the VWL image (e.g., the excavator), location information (geo-coordinates) for the VWL indicating the dig area (dig area indicators), provider information relating to a service (e.g., the image server **516**) for the underlying image on which a VWL is created, latitude/longitude and/or altitude information relating to the underlying image, and the like. Descriptor files **126** provide a mechanism by which the multi-generational VWL application **100** may be queried by another application, such as a ticket management application, for processing multi-generational VWL images **122** of the VWL image series **124**. In one example, descriptor file(s) **126** may be extensible markup language (XML) files that are created during a save process for the multi-generational VWL images **122**. More details of a system and method of using multi-generational VWL application **100** are described with reference to FIGS. 5, 6A, and 6B.

In a “one image-to-multiple VWL” scenario, when the geographic area of the ticket is suitably small to be shown fully on a single image, only one image need be read from input images **118** into multi-generational VWL application **100** and then multiple virtual white lines are created thereon in order to delimit the multiple dig areas, respectively, of staged excavation of multiple related tickets and/or project ticket. An example of this scenario is described with reference to FIG. 2.

In a “multiple image-to-multiple VWL” scenario, when the geographic area of the multiple related tickets and/or project ticket is suitably large that it cannot be shown fully with a sufficient level of detail on a single image, multiple images may be read from input images **118** into multi-generational VWL application **100** and then at least one virtual white line (at least one dig area indicator) is created on each image in succession. An example of this scenario is described with reference to FIGS. 3 and 4.

Referring to FIG. 2, a view of a multi-generational VWL image **200**, which shows the “one image-to-multiple VWL” scenario of multi-generational VWL application **100**, is presented. More specifically, FIG. 2 shows an example in which the geographic area of a certain ticket is suitably small to be shown fully on a single image, such as multi-generational

15

VWL image **200**. Multi-generational VWL image **200** further shows multiple virtual white lines that delimit multiple planned excavations that are staged to occur over time with respect to the multiple related tickets and/or project ticket. For example, multi-generational VWL image **200** shows a VWL **201**, which may be the VWL for the first stage of excavation; a VWL **202**, which may be the VWL for the second stage of excavation; a VWL **203**, which may be the VWL for the third stage of excavation; and so on through a VWL **211**, which may be the VWL for the eleventh stage of excavation. VWL **201** through VWL **211** correspond to contiguous stages of the multiple-stage project. VWL **201** through VWL **211** are created by use of VWL user interface **110** of multi-generational VWL application **100**.

Further, each VWL may be automatically labeled and dated according to the planned excavation order and dates of the multiple related tickets and/or project ticket. For example, VWL **201** may be labeled “Stage 1” and dated 5 Jan. 09; VWL **202** may be labeled “Stage 2” and dated 12 Jan. 09; VWL **203** may be labeled “Stage 3” and dated 19 Jan. 09; and so on through VWL **211**, which may be labeled “Stage 11” and dated 16 Mar. 09.

Referring again to FIG. 2, when made available to locate personnel, a multi-generational VWL image, such as multi-generational VWL image **200**, and the information associated therewith provides precise clarity as to the order and timing of locate operations that are associated with the multiple related tickets and/or project ticket. As a result, the multi-generational VWL image of this scenario, which is created using the multi-generational VWL application **100** described herein, provides a mechanism by which excavators can clearly communicate to locate personnel information about the staged excavation, which is useful for optimally synchronizing the day-to-day activities of excavators and locate personnel.

Referring to FIGS. 3 and 4, views of a VWL image series **300**, which shows the “multiple image-to-multiple VWL” scenario of multi-generational VWL application **100** are presented. More specifically, FIG. 3 shows an example in which the geographic area of a certain ticket is suitably large to require it to be shown across a series of images, such as VWL image series **300**. Further, each image of VWL image series **300** shows at least one set of virtual white lines. Collectively, the virtual white lines included in VWL image series **300** delimit multiple planned excavations that are staged to occur over time. For example, VWL image series **300** may include a multi-generational VWL image **301**, a multi-generational VWL image **302**, a multi-generational VWL image **303**, and a multi-generational VWL image **304**.

Additionally, multi-generational VWL image **301** shows a VWL **311**, which may be the VWL for the first stage of excavation. Multi-generational VWL image **302** shows a VWL **312**, which may be the VWL for the second stage of excavation. Multi-generational VWL image **303** shows a VWL **313**, which may be the VWL for the third stage of excavation. Multi-generational VWL image **304** shows a VWL **314**, which may be the VWL for the fourth stage of excavation. VWL **311** through VWL **314** correspond to contiguous stages of the multiple-stage project. VWL **311** through VWL **314** are created by use of VWL user interface **110** of multi-generational VWL application **100**.

Further, each multi-generational VWL image and each VWL of VWL image series **300** may be automatically labeled and dated by the multigenerational VWL application **100** according to the planned excavation order and dates of the multiple related tickets and/or project ticket. For example, multi-generational VWL image **301** may be labeled “IMAGE01 OF 04” and VWL **311** may be labeled “Stage 1”

16

and dated 2 Feb. 09; multi-generational VWL image **302** may be labeled “IMAGE02 OF 04” and VWL **312** may be labeled “Stage 2” and dated 9 Feb. 09; multi-generational VWL image **303** may be labeled “IMAGE03 OF 04” and VWL **313** may be labeled “Stage 3” and dated 16 Feb. 09; and multi-generational VWL image **304** may be labeled “IMAGE04 OF 04” and VWL **314** may be labeled “Stage 4” and dated 23 Feb. 09.

While FIG. 3 shows details of each multi-generational VWL image of VWL image series **300** separately, FIG. 4 shows multi-generational VWL images **301**, **302**, **303**, and **304** overlaid in a fashion that shows the full scope of the staged excavations of the multiple related tickets and/or project ticket.

Referring again to FIGS. 3 and 4, when made available to locate personnel, a VWL image series, such as VWL image series **300**, and the information associated therewith provides precise clarity as to the order and timing of locate operations that are associated with the multiple related tickets and/or project ticket. As a result, the VWL image series of this scenario, which is created using the multi-generational VWL application **100** described herein, provides a mechanism by which excavators can clearly communicate to locate personnel information about the staged excavation, which is useful for optimally synchronizing the day-to-day activities of excavators and locate personnel.

Referring to FIGS. 1 through 4, during the save operation of multi-generational VWL application **100**, any multi-generational VWL images created therein may be converted to any standard digital image file format, such as JPG file format, and saved to an associated file system (not shown).

Referring to FIG. 5, a functional block diagram of a multi-generational VWL system **500** that includes multi-generational VWL application **100** is presented. The multi-generational VWL system **500** described herein may include an application server **510**, which includes processing unit **502** and memory **504** (memory **504** may include one or more storage media components). In one exemplary implementation, multi-generational VWL application **100**, which is described with reference to FIGS. 1 through 4, is stored in memory **504** (e.g., as processor-executable instructions and data associated with execution of these instructions) and executed by processing unit **502**. Application server **510** may be any application server, such as a web application server and/or web portal, by which one or more excavators **512** may access multi-generational VWL application **100** with respect to generating multi-generational virtual white lines. Application server **510** may be accessed by excavators **512** via any networked computing device (not shown). Excavators **512** may be any personnel associated with excavation companies (not shown), such as, but not limited to, individuals who are requesting and/or performing excavation activities.

Multi-generational VWL system **500** may further include one or more one-call centers **514**. One-call centers **514** may be any organizations, entities, and/or systems that receive, process, and/or transmit locate requests. The locate request (or ticket) may be any communication or instruction to perform a locate operation compiled as ticket information **116**. One-call centers are generally owned, controlled, or funded by underground facility owners, such as telephone companies, cable television multiple system operators, electric utilities, gas utilities, or others. One-call center operations may be managed by a non-profit entity or outsourced to a for-profit firm. Excavators, such as excavators **512**, are required to notify one-call centers in advance of their excavation activities and identify through the locate request the dig area where individual excavating activities will be performed. Locate

requests include information supplied by the excavator to the one-call center regarding the specific geographic location of the dig area, date, time, purpose of excavation, and so on. The locate request, in turn, requires activity from an underground facility owner (or a locate contractor) to perform a locate operation in the specified dig area pursuant to the ticket information 116.

With respect to multi-generational VWL system 500, one type of locate request that may be processed by one-call centers 514 is a project ticket that may warrant a multi-generational VWL image and/or a VWL image series associated therewith.

Multi-generational VWL system 500 may further include an image server 516. Image server 516, which includes processing unit 506 and memory 508, stores and provides input images 118. For example, image server 516 may be associated with a party that provides aerial images of geographic locations for a fee. Image server 516 is one example of an entity supplying input images 118 to multi-generational VWL application 100 residing on application server 510.

Multi-generational VWL system 500 may further include a central server 520 of, for example, a locate service provider. The central server includes processing unit 544 and memory 546, which may include one or more storage media components. A workforce management application 522 is stored on memory 546 (e.g., as processor-executable instructions) and executed by processor 544. In one exemplary implementation, the workforce management application 522 may include a ticket assembly component 524 which processes the output of the multi-generational VWL application 100 and dispatches tickets 526 to locate personnel 528. Locate personnel 528 may be, for example, locate technicians and/or quality control technicians that, for example, perform locate operations.

More specifically, workforce management application 522 of central server 520 may be used to process the locate requests, such as multiple related tickets and/or project tickets that are received from one-call centers 514, and dispatch tickets 526 to locate personnel 528 that are in the field. In particular, ticket assembly component 524 associates one or more descriptor files 126 with active tickets provided by one-call centers 514, identifies and/or assembles the multi-generational VWL image(s) 122 (in the form of image files 530) that are specified in descriptor file(s) 126 along with its corresponding ticket information, and bundles all image files and information (e.g., in some cases the descriptor file(s) themselves) in order to create tickets 526, stored in memory 546. In particular, one or more machine-readable VWL image files 530 (and optionally their associated descriptor file(s)) may be bundled with the ticket information provided by the one-call center to generate tickets 526 via ticket assembly component 524.

Tickets 526 that are dispatched from central server 520 may be received by locate personnel 528 via one or more onsite computers 532. Each onsite computer 532 may be a computer including processing unit 550 and memory 552, such as, but not limited to, a computer that is present in the vehicle that is being used by locate personnel 528. Each onsite computer 532 may be, for example, any computing device, such as portable computer, a personal computer, a tablet device, a PDA, a cellular radiotelephone, a mobile computing device, a touch-screen device, a touchpad device, or generally any device including, or connected to, a processor and a user interface. Preferably, onsite computer 532 is a portable computing device, such as laptop computer or tablet device. Residing in memory 552 of onsite computer 532, may be certain tools, such as a viewer 534, which may be executed

by processing unit 550. Viewer 534 may be any viewer application that is capable of reading and displaying ticket information and/or digital images, such as VWL image files 530. In one exemplary implementation, one or more VWL image files 530 bundled in a ticket 526 may be "limited access files," e.g., encoded, encrypted, formatted, compiled and/or named in some particular fashion (e.g., having a proprietary filename extension), and the viewer 534 may be particularly designed (i.e., a "custom or proprietary" viewer) such that access to the VWL image files is limited in some manner (e.g., the image files may only be opened/viewed by the customized/proprietary viewer that recognizes the proprietary filename extension). Additional details of a method of operation and/or using multi-generational VWL system 500 are described with reference to FIGS. 6A and 6B.

A network 536 provides the communication link between any and/or all entities of multi-generational VWL system 500. For example, network 536 provides the communication network by which information may be exchanged between application server 510, one-call centers 514, image server 516, central server 520 and onsite computers 532. Network 536 may be, for example, any local area network (LAN) and/or wide area network (WAN) for connecting to the Internet.

In order to connect to network 536, each entity of multi-generational VWL system 500 includes a communication interface. For example, the respective communication interfaces 560a-e of application server 510, one-call centers 514, image server 516, central server 520 and onsite computers 532 may be any wired and/or wireless communication interface by which information may be exchanged between any entities of multi-generational VWL system 500. Examples of wired communication interfaces may include, but are not limited to, USB ports, RS232 connectors, RJ45 connectors, Ethernet, and any combinations thereof. Examples of wireless communication interfaces may include, but are not limited to, an Intranet connection, Internet, Bluetooth® technology, Wi-Fi, Wi-Max, IEEE 802.11 technology, radio frequency (RF), Infrared Data Association (IrDA) compatible protocols, Local Area Networks (LAN), Wide Area Networks (WAN), Shared Wireless Access Protocol (SWAP), any combinations thereof, and other types of wireless networking protocols.

Multi-generational VWL system 500 is not limited to the types and numbers of entities that are shown in FIG. 5. Any types and numbers of entities that may be useful in underground facilities locate applications may be included in multi-generational VWL system 500. Further, the distribution of storage and processing of data shown in FIG. 5 is merely exemplary, as described below.

For example, in another alternative implementation, rather than employing central server 520 in the VWL system 500, a one-call center 514 may include and maintain the ticket assembly component 524 (shown in FIG. 5 as part of the workforce management application 522), and may receive from the multi-generational VWL application 100 one or more of multi-generational VWL images 122, VWL image series 124 (e.g., in the form of image files 530) and/or descriptor file(s) 126 to be associated with ticket information 116.

In this example, excavators may initiate locate requests with the one-call center 514 and provide ticket information 116. The one-call center 514 may in turn pass the ticket information 116 to the VWL application 100, and re-direct the excavator to the VWL application 100 for creation of one or more VWL images 122 and/or image series 124. Upon completion of the VWL images, the VWL application 100 transmits back to the ticket assembly component 524 resident

at the one-call center **514** one or more image files **530** and descriptor file(s) **126**, which the ticket assembly component **524** then bundles with the ticket information **116** prior to dispatching tickets **526** to locate personnel **528**.

It should be appreciated that the methods described above in connection with ticket assembly (i.e., bundling of ticket information, one or more VWL images, and optionally one or more descriptor files) and dispatch of assembled tickets may be employed for excavation projects involving a single dig area as well as multi-generational staged excavation projects. For single-stage projects in which only one VWL image is created to identify a single dig area, a VWL application (e.g., as described in U.S. patent application Ser. Nos. 12/366,853 and 12/050,055) may provide to the ticket assembly component (wherever resident) a VWL image file and in some cases a descriptor file (e.g., an XML file), and/or metadata forming part of the VWL image file, including information associated with the VWL image. Examples of information that may be included as metadata in the VWL image file or included in the descriptor file may include, but is not limited to, date and time information indicating when the VWL image was created, an identifier for the creator of the VWL image (e.g., the excavator), location information (geo-coordinates) for the VWL indicating the dig area (dig area indicators), provider information relating to a service (e.g., the image server **516**) for the underlying image on which a VWL is created, latitude/longitude and/or altitude information relating to the underlying image, and the like. As in the multi-generational VWL implementation described above, ticket assembly component bundles the VWL image and optionally the metadata and/or descriptor file with the ticket information so as to compile a ticket for dispatching to locate personnel.

In some instances, for either single-stage or multi-generational staged excavation projects, it may be desirable for a single entity or a limited number of entities to retain control over the VWL image file(s) **530** and any associated metadata and/or descriptor file(s). For example, it may be desirable for the entity that provides access to a VWL creation application (e.g., the multi-generational VWL application **100**) and has initial control of one or more created VWL images (e.g., application server **510**) to retain control of such VWL images. One potential benefit of retaining control of the VWL image(s) once created is avoiding unauthorized edits to or unauthorized use of the image(s).

According to one example, a “controlling” entity that provides access to a VWL creation application (e.g., the multi-generational VWL application **100**) retains control of one or more created images, but allows other entities to access the images in some instances in a limited manner. For example, the controlling entity may provide a link (e.g., a hyperlink) to one or more VWL images (e.g., via an e-mail) or otherwise provide an interface allowing the VWL image(s) to be accessed (e.g., via a customized or proprietary image viewing application). To maintain the integrity of the VWL image(s), the application providing access to the VWL image(s) may prohibit copying of, saving of, or writing to the images. For example, the VWL image may be viewable only using a corresponding image file viewer that allows limited access to the VWL image. In particular, copy, save and/or write access to the VWL image may be prohibited. In these and other respects discussed below, one or more VWL image files may be stored and/or transmitted as “limited access files.”

The VWL image may, for example, be transmitted to a party associated with the at least one underground facility with the corresponding image file viewer so that the party may view the VWL image. For example, an executable file comprising the VWL image and image file viewer may be

transmitted (e.g., a customized image viewer **534** may be transmitted to one or more onsite computers **532**). Alternatively, the image file viewer may be downloaded/installed separately, e.g., from a website of the controlling entity, or the VWL image may be viewed using an image file viewer stored and executed on a server of the controlling entity.

In one implementation, the controlling entity may allow access to the VWL image(s) only when a certain condition or conditions are met. For example, the controlling entity may require a password protected log-in procedure for access to the VWL image(s). In particular, the image file viewer may require a password to permit access to the VWL image. As another example, the controlling entity may require acceptance of certain terms and/or conditions to permit access to the VWL image. According to one implementation, the image file viewer may be programmed to require an indication of acceptance of terms and/or conditions prior to permitting access to the VWL image. According to yet another example, the controlling entity may charge a fee for permitting a third party to access one or more VWL images, such as a per-transaction fee or a subscription fee.

To prevent access to the VWL image unless or until a condition or conditions are met, the VWL image may be encrypted and require decryption to be readable. A corresponding image file viewer may be required to decrypt the VWL image. The VWL image and/or the corresponding image file viewer may also be alternatively be proprietary, and may have a format specific to the controlling entity. The image file viewer may optionally be programmed to determine whether an updated version of the image file viewer is available. For example, the image file viewer may interrogate information associated with the VWL image to determine a corresponding version of the image file viewer. If an updated version is found, the viewer may prompt the user to upgrade the application or otherwise facilitate an update.

The VWL image may be transmitted in a variety of different formats. For example, the VWL image may be transmitted as an image including virtual white lines thereon. Alternatively, the VWL image may be transmitted as a base image with associated metadata and/or a separate file (e.g., an XML file) including information that allows virtual white lines to be rendered on or in connection with the base image. Such information may comprise geographic coordinates specifying the virtual white lines to be displayed on the base image. The information included in the metadata and/or separate file may also specify access permissions for the virtual white lines. For example, in the case where the information that allows virtual white lines to be rendered relates to a plurality of dig sites, virtual white line information for one or more dig sites may have restricted access such that the corresponding virtual white lines are not rendered unless certain access conditions are met.

Since the workforce management application **522** may require access to one or more VWL image file(s) **530** to assemble, attach or otherwise integrate the image file(s) with ticket information, it may be desirable in some implementations to store and execute the workforce management application **522** on the application server **510**, which facilitates creation of one or more VWL images. Alternatively, the workforce management application **522** may be stored and executed on the central server **520** or at one-call centers **514**, but the VWL image(s) may be stored remotely. In this case, the bundling performed by the ticket assembly component (wherever resident) may involve, e.g., bundling the information of tickets **526** with a link to one or more VWL images or other information specifying or permitting access to the VWL image(s). According to another arrangement, the central

21

server **520** or the one-call centers **514** may control one or more VWL images by storing the VWL image(s) and also storing and executing the workforce management application **522**.

Referring to FIGS. 6A and 6B, a flow diagram of an example of a method **600** of operation and/or of using multi-generational VWL system **500** is presented. Method **600** may include, but is not limited to, the following steps, which are not limited to any order.

At step **612**, a certain excavator **512** requests a ticket number from any controlling entity. For example, the excavator **512** calls and/or accesses a web portal of the one-call center **514** and requests, for example, a project ticket number because the planned excavation is related to a project wherein excavation is to be performed in multiple stages over time (e.g., over several days, weeks, and/or months).

At step **614**, the certain excavator **512** logs into multi-generational VWL application **100** and enters certain information. For example, using the Internet browser of any networked computer, the excavator **512** logs into multi-generational VWL application **100** at application server **510** in order to access VWL user interface **110** and certain information, such as, but not limited to, the excavator's name, excavation company name, excavation company location, ticket number, and the dig area address and/or other location information. Alternatively, the excavator may enter this information via the one-call center web portal, and the one-call center may redirect the excavator to the multi-generational VWL application and pass on to the application some or all of the information provided by the excavator (e.g., as an XML file). Information processing component **114** temporarily caches this information in order to later associate this information as may be necessary or desirable with multi-generational VWL images **122** and/or VWL image series **124** that are created by multi-generational VWL application **100**.

At decision step **616**, based on the address and/or other location information of the proposed dig area, it may be determined whether a single input image **118** from image server **516** is needed or multiple input images **118** are needed in order to render the full scope of the multiple related tickets and/or project ticket. If a single input image **118** only is needed to fully render the project (i.e., the "one image-to-multiple VWL" scenario), method **600** proceeds to step **618**. However, if multiple input images **118** are needed to fully render the project (i.e., the "multiple image-to-multiple VWL" scenario), method **600** proceeds to step **626**.

At step **618**, multi-generational VWL application **100** acquires and renders an input image **118**, which may be an aerial image, of the excavation site location. In one example, using VWL user interface **110**, the excavator **512** may enter the address and/or other location information (e.g., latitude/longitude coordinates) of the proposed dig area and multi-generational VWL application **100** automatically queries image server **516** for the corresponding input image **118** which is read into the application and rendered in drawing tool **112**. In another example, multi-generational VWL application **100** provides a mechanism by which the excavator **512** may view and pan over an aerial map of a region and then manually identify the location of the proposed dig area. Once manually identified, the corresponding input image **118** is read into the application and rendered in drawing tool **112**. By way of example and referring again to FIG. 2, an input image **118**, such as multi-generational VWL image **200**, is read into the application and rendered in drawing tool **112**.

At step **620**, the excavator **512** creates the first virtual white line that delimits the dig area of the first stage of the project. By way of example and referring again to FIG. 2, the exca-

22

vator **512** creates VWL **201** on multi-generational VWL image **200** using drawing tool **112**, which delimits the dig area of the first stage of the project. Additionally, the excavator **512** is prompted for or otherwise enters information that is automatically associated with VWL **201**. For example, the excavator **512** enters the stage number (e.g., stage **1**) and the stage date (e.g., 5 Jan. 09), which may be superimposed on multi-generational VWL image **200** at VWL **201**.

At decision step **622**, the excavator **512** is prompted or otherwise indicates whether another virtual white line is to be created. If yes, method **600** proceeds to step **624**. If no, method **600** proceeds to step **636**.

At step **624**, the excavator **512** creates the next virtual white line that delimits the dig area of the next stage of the project. By way of example and referring again to FIG. 2, the excavator **512** creates the next virtual white line, such as VWL **202** (then VWL **203**, then VWL **204**, and so on) on multi-generational VWL image **200** using drawing tool **112**, which delimits the dig area of the next stage of the project. Additionally, the excavator **512** is prompted for or otherwise enters information that is automatically associated with the next virtual white line, such as VWL **202**. For example, for VWL **202**, the excavator **512** enters the stage number (e.g., stage **2**) and the stage date (e.g., 12 Jan. 09), which may be superimposed on multi-generational VWL image **200** at VWL **202**. Method **600** returns to step **622**.

At step **626**, multi-generational VWL application **100** acquires and renders the first input image **118**, which may be an aerial image, of the excavation site location. In one example, using VWL user interface **110**, the excavator **512** may enter the address and/or other location information (e.g., latitude/longitude coordinates) of the first proposed dig area and multi-generational VWL application **100** automatically queries image server **516** for the corresponding input image **118** which is read into the application and rendered in drawing tool **112**. In another example, multi-generational VWL application **100** provides a mechanism by which the excavator **512** may view and pan over an aerial map of a region and then manually identify the location of the proposed dig area. Once manually identified, the corresponding input image **118** is read into the application and rendered in drawing tool **112**. By way of example and referring again to FIGS. 3 and 4, an input image **118**, such as multi-generational VWL image **301**, is read into the application and rendered in drawing tool **112**.

At step **628**, the excavator **512** creates the first virtual white line that delimits the dig area of the first stage of the project on the first input image **118**. By way of example and referring again to FIGS. 3 and 4, the excavator **512** creates VWL **311** on multi-generational VWL image **301** using drawing tool **112**, which delimits the dig area of the first stage of the project. Additionally, the excavator **512** is prompted for or otherwise enters information that is automatically associated with VWL **311**. For example, the excavator **512** enters the stage number (e.g., stage **1**) and the stage date (e.g., 2 Feb. 09), which may be superimposed on multi-generational VWL image **301** at VWL **311**.

At decision step **630**, the excavator **512** is prompted or otherwise indicates whether another virtual white line is to be created. If yes, method **600** proceeds to step **632**. If no, the VWL image series is complete and method **600** proceeds to step **636**.

At step **632**, multi-generational VWL application **100** acquires and renders the next input image **118**, which may be an aerial image, of the excavation site location. In one example, using VWL user interface **110**, the excavator **512** may enter the address and/or other location information (e.g., latitude/longitude coordinates) of the next proposed dig area

and multi-generational VWL application 100 automatically queries image server 516 for the corresponding input image 118 which is read into the application and rendered in drawing tool 112. In another example, multi-generational VWL application 100 provides a mechanism by which the excavator 512 may view and pan over an aerial map of a region and then manually identify the location of the next proposed dig area. Once manually identified, the corresponding input image 118 is read into the application and rendered in drawing tool 112. By way of example and referring again to FIGS. 3 and 4, an input image 118, such as multi-generational VWL image 302 (then multi-generational VWL image 303, then multi-generational VWL image 304), is read into the application and rendered in drawing tool 112.

At step 634, the excavator 512 creates the next virtual white line that delimits the dig area of the next stage of the project on the next input image 118. By way of example and referring again to FIGS. 3 and 4, the excavator 512 creates the next virtual white line, such as VWL 312 (then VWL 313, then VWL 314) on multi-generational VWL image 302 (then multi-generational VWL image 303, then multi-generational VWL image 304) using drawing tool 112, which delimits the dig area of the next stage of the project. Additionally, the excavator 512 is prompted for or otherwise enters information that is automatically associated with the next virtual white line, such as VWL 312. For example, for VWL 312, the excavator 512 enters the stage number (e.g., stage 2) and the stage date (e.g., 9 Feb. 09), which may be superimposed on multi-generational VWL image 302 at VWL 312. The transition from one multi-generational VWL image to the next may be assisted via geo-coding or other geographical identification metadata therein for "stitching" the images together in a contiguous fashion. Method 600 returns to step 630.

At step 636 shown in FIG. 6B, a save operation of multi-generational VWL application 100 is performed. In particular, one or more virtual white lines, one or more multi-generational VWL images, one or more VWL image series, and/or other information is saved in multi-generational VWL application 100. For example, the excavator 512 may initiate a save operation by selecting a SAVE button of VWL user interface 110 in order to save the contents of the session at application server 510 and/or central server 520. In particular, all of the multi-generational VWL images showing the multi-generational virtual white lines that delimit or otherwise indicate the respective stages of the multiple related tickets and/or project ticket are saved as standard machine-readable image files, such as JPG files, which are hereafter referred to as VWL image files. During the save operation, the excavator 512 may be prompted to enter certain information. For example, the excavator 512 may be prompted to enter the ticket number that was provided by the one-call center 514 at step 612. Additionally, in order to log the one-call center 514 for this ticket, the excavator 512 may be prompted to select the originating one-call center 514.

At step 638, multi-generational VWL application 100 creates one or more descriptor files 126 for all information associated with the multi-generational VWL images and/or VWL image series of the session. For example, when each multi-generational VWL image and/or VWL image series is saved, a corresponding descriptor file 126 (e.g., corresponding XML file) is created that includes information about the multi-generational VWL images and/or VWL image series, such as multi-generational VWL image 200 of FIG. 2 and/or VWL image series 300 of FIGS. 3 and 4. For example and with respect to multiple-stage excavation projects, each descriptor file 126 may include the ticket number, the name of multi-generational VWL image, the name of the VWL image series,

the stage number and stage date with respect to each virtual white line of the multiple related tickets and/or project ticket, and other information as discussed above.

At step 640, ticket assembly component 524 queries the file directory of application server 510 in order to identify descriptor files 126 that correspond to active tickets of one-call centers 514. This may be accomplished by matching the ticket number information of descriptor files 126 to active tickets of one-call centers 514.

At step 642, once a descriptor file 126 that corresponds to an active ticket is identified, ticket assembly component 524 reads the identified descriptor file 126 and searches for the VWL image files 530 of the multi-generational VWL images that are specified therein for the ticket of interest. In one example and referring to FIG. 2, multi-generational VWL image 200 may be specified in the identified descriptor file 126. In another example and referring to FIGS. 3 and 4, multi-generational VWL images 301, 302, 303, and 304 of VWL image series 300 may be specified in the identified descriptor file 126.

At step 644, ticket assembly component 524 bundles the multi-generational VWL images (in the form of VWL image files 530) that are specified in the identified descriptor file 126 along with its corresponding ticket information in order to create a certain ticket 526. In one example and referring to FIG. 2, a VWL image file 530 of multi-generational VWL image 200 may be bundled along with its corresponding ticket information in order to create a certain ticket 526. In another example and referring to FIGS. 3 and 4, VWL image files 530 of multi-generational VWL images 301, 302, 303, and 304 of VWL image series 300 may be bundled in the correct order along with the corresponding ticket information in order to create a certain ticket 526.

According to one example, the ticket assembly component 524 forms a ticket bundle by assembling a file including the at least one image and the ticket information. Alternatively, the ticket assembly component 524 may form the ticket bundle by associating a file including the at least one image and a file including the ticket information. The ticket bundle need not include the actual at least one image. Instead, the ticket bundle may comprise information specifying or permitting access to the at least one image (e.g., a link to the at least one image). Thus, the ticket bundle may comprise a file including the ticket information and a link (e.g., a hyperlink) to the at least one image. In some implementations, the ticket bundle may include one or more descriptor files themselves.

At step 646, one or more tickets 526 are dispatched and locate personnel 528 retrieve the one or more tickets 526 (e.g., from central server 520) via their respective onsite computers 532. For example, the tickets 526 may be electronically transmitted to the locate personnel 528 from the central server 520. Alternatively, the tickets 526 may be made accessible to the locate personnel 528 on the central server 520. In one example and referring to FIG. 2, a certain locate personnel 528 retrieves a ticket 526 that includes the VWL image file 530 of multi-generational VWL image 200 along with its corresponding ticket information. In another example and referring to FIGS. 3 and 4, a certain locate personnel 528 retrieves a ticket 526 that includes the VWL image files 530 of multi-generational VWL images 301, 302, 303, and 304 of VWL image series 300 along with the corresponding ticket information. According to yet another example, the ticket may include a link to the one or more VWL images or other information specifying or permitting access to the one or more VWL images, rather than including the image or images

themselves. As noted above, custom viewers also may be employed by ticket recipients to provide limited access to VWL images.

At step 648, locate personnel 528 views the ticket information and the multi-generational VWLs in order to perform a locate operation. In one example and referring to FIG. 2, a certain locate personnel 528 uses viewer 534 to view information of ticket 526 and to view VWL 201 through 211 of multi-generational VWL image 200 in order to perform the locate operation according to the order and date specified thereon. In another example and referring to FIGS. 3 and 4, a certain locate personnel 528 uses viewer 534 to view information of ticket 526 and to view VWL 311 of multi-generational VWL image 301, VWL 312 of multi-generational VWL image 302, VWL 313 of multi-generational VWL image 303, and VWL 314 of multi-generational VWL image 304 in order to perform the locate operation according to the order and date specified thereon.

It should be appreciated that while the foregoing example relates to a method of operation and/or of using a multi-generational VWL system, the method may also apply to single stage projects and single VWL image files.

In summary, multi-generational VWL application 100, multi-generational VWL system 500, and/or method 600 may provide improved tools for clearly documenting plans for staged excavation with respect to, for example, multiple related tickets and/or project tickets that is not otherwise available using current processes.

Further, multi-generational VWL application 100, multi-generational VWL system 500, and/or method 600 may provide improved communication mechanisms between excavators and locate personnel for synchronizing staged excavation activities and locate operations that are not otherwise available using current processes.

Yet further, because of the improved communication mechanisms between excavators and locate personnel, multi-generational VWL application 100, multi-generational VWL system 500, and/or method 600 may provide improved operating efficiency for both excavation companies and locate service providers. Still further, because of the improved tools and communication mechanisms between excavators and locate personnel, multi-generational VWL application 100, multi-generational VWL system 500, and/or method 600 may reduce or entirely eliminate the uncertainty for excavators about the status and/or quality of locate operations, which may reduce or entirely eliminate the risk of damage to underground facilities.

While various inventive embodiments have been described and illustrated herein, those of ordinary skill in the art will readily envision a variety of other means and/or structures for performing the function and/or obtaining the results and/or one or more of the advantages described herein, and each of such variations and/or modifications is deemed to be within the scope of the inventive embodiments described herein. More generally, those skilled in the art will readily appreciate that all parameters, dimensions, materials, and configurations described herein are meant to be exemplary and that the actual parameters, dimensions, materials, and/or configurations will depend upon the specific application or applications for which the inventive teachings is/are used. Those skilled in the art will recognize, or be able to ascertain using no more than routine experimentation, many equivalents to the specific inventive embodiments described herein. It is, therefore, to be understood that the foregoing embodiments are presented by way of example only and that, within the scope of the appended claims and equivalents thereto, inventive embodiments may be practiced otherwise than as specifically

described and claimed. Inventive embodiments of the present disclosure are directed to each individual feature, system, article, material, kit, and/or method described herein. In addition, any combination of two or more such features, systems, articles, materials, kits, and/or methods, if such features, systems, articles, materials, kits, and/or methods are not mutually inconsistent, is included within the inventive scope of the present disclosure. All definitions, as defined and used herein, should be understood to control over dictionary definitions, definitions in documents incorporated by reference, and/or ordinary meanings of the defined terms. The indefinite articles "a" and "an," as used herein in the specification and in the claims, unless clearly indicated to the contrary, should be understood to mean "at least one."

The phrase "and/or," as used herein in the specification and in the claims, should be understood to mean "either or both" of the elements so conjoined, i.e., elements that are conjunctively present in some cases and disjunctively present in other cases. Multiple elements listed with "and/or" should be construed in the same fashion, i.e., "one or more" of the elements so conjoined. Other elements may optionally be present other than the elements specifically identified by the "and/or" clause, whether related or unrelated to those elements specifically identified. Thus, as a non-limiting example, a reference to "A and/or B", when used in conjunction with open-ended language such as "comprising" can refer, in one embodiment, to A only (optionally including elements other than B); in another embodiment, to B only (optionally including elements other than A); in yet another embodiment, to both A and B (optionally including other elements); etc.

As used herein in the specification and in the claims, "or" should be understood to have the same meaning as "and/or" as defined above. For example, when separating items in a list, "or" or "and/or" shall be interpreted as being inclusive, i.e., the inclusion of at least one, but also including more than one, of a number or list of elements, and, optionally, additional unlisted items. Only terms clearly indicated to the contrary, such as "only one of" or "exactly one of," or, when used in the claims, "consisting of," will refer to the inclusion of exactly one element of a number or list of elements. In general, the term "or" as used herein shall only be interpreted as indicating exclusive alternatives (i.e. "one or the other but not both") when preceded by terms of exclusivity, such as "either," "one of," "only one of," or "exactly one of." "Consisting essentially of," when used in the claims, shall have its ordinary meaning as used in the field of patent law.

As used herein in the specification and in the claims, the phrase "at least one," in reference to a list of one or more elements, should be understood to mean at least one element selected from any one or more of the elements in the list of elements, but not necessarily including at least one of each and every element specifically listed within the list of elements and not excluding any combinations of elements in the list of elements. This definition also allows that elements may optionally be present other than the elements specifically identified within the list of elements to which the phrase "at least one" refers, whether related or unrelated to those elements specifically identified. Thus, as a non-limiting example, "at least one of A and B" (or, equivalently, "at least one of A or B," or, equivalently "at least one of A and/or B") can refer, in one embodiment, to at least one, optionally including more than one, A, with no B present (and optionally including elements other than B); in another embodiment, to at least one, optionally including more than one, B, with no A present (and optionally including elements other than A); in yet another embodiment, to at least one, optionally including

more than one, A, and at least one, optionally including more than one, B (and optionally including other elements); etc.

It should also be understood that, unless clearly indicated to the contrary, in any methods claimed herein that include more than one step or act, the order of the steps or acts of the method is not necessarily limited to the order in which the steps or acts of the method are recited.

In the claims, as well as in the specification above, all transitional phrases such as “comprising,” “including,” “carrying,” “having,” “containing,” “involving,” “holding,” “composed of,” and the like are to be understood to be open-ended, i.e., to mean including but not limited to. Only the transitional phrases “consisting of” and “consisting essentially of” shall be closed or semi-closed transitional phrases, respectively, as set forth in the United States Patent Office Manual of Patent Examining Procedures, Section 2111.03.

The invention claimed is:

1. An apparatus for facilitating detection of a presence or an absence of at least one underground facility within a dig area, wherein at least a portion of the dig area is planned to be excavated or disturbed during excavation activities, the apparatus comprising:

a communication interface;

a display device;

at least one user input device;

a memory to store processor-executable instructions; and a processing unit coupled to the communication interface, the display device, the at least one user input device, and the memory, wherein upon execution of the processor-executable instructions by the processing unit, the processing unit:

controls the communication interface to electronically receive source data representing at least one input image of a geographic area including a first dig area and at least one additional dig area, wherein the first dig area corresponds to a first stage of a staged excavation project and the at least one additional dig area corresponds to at least one subsequent stage of the staged excavation project;

controls the display device to display at least a portion of the at least one input image;

acquires at least one first user input from the at least one user input device;

generates a first generation marked-up digital image including at least one first indicator overlaid on the at least one input image to provide at least one indication of the first dig area where the first stage of the staged excavation project is planned to be performed;

acquires at least one second user input from the at least one user input device;

generates a multi-generational marked-up digital image including at least one additional indicator overlaid on the first generation marked-up digital image including the at least one indication of the first dig area to provide at least one indication of the at least one additional dig area where the at least one subsequent stage of the staged excavation project is planned to be performed;

adds a first indication to the first generation marked-up digital image and/or the multi-generational marked-up digital image that the first dig area corresponds to the first stage;

adds a second indication to the multi-generational marked-up digital image that the at least one additional dig area corresponds to the at least one subsequent stage; and

further controls the communication interface and/or the memory to electronically transmit and/or electronically store information relating to the multi-generational marked-up digital image so as to facilitate the detection of the presence or the absence of the at least one underground facility within the plurality of dig areas.

2. The apparatus of claim 1, wherein the processing unit: adds a first excavation date, corresponding to the first dig area, to the first generation marked-up digital image and/or the multi-generational marked-up digital image; and

adds a second excavation date, corresponding to the at least one additional dig area, to the multi-generational marked-up digital image.

3. The apparatus of claim 1, wherein the processing unit: electronically stores, in the memory, the information relating to the multi-generational marked-up digital image with a corresponding descriptor file comprising information identifying at least one ticket number.

4. The apparatus of claim 3, wherein the at least one ticket number comprises a first ticket number corresponding to the first stage of the staged excavation project and at least one additional ticket number corresponding to the at least one subsequent stage of the staged excavation project.

5. The apparatus of claim 3, wherein the descriptor file further comprises a first stage identifier corresponding to the first stage of the staged excavation project and at least one additional stage identifier corresponding to the at least one subsequent stage of the staged excavation project.

6. The apparatus of claim 3, wherein the descriptor file further comprises a first stage date corresponding to the first stage of the staged excavation project and at least one additional stage date corresponding to the at least one subsequent stage of the staged excavation project.

7. At least one computer-readable storage medium encoded with instructions that, when executed by at least one processing unit, perform a method for facilitating detection of a presence or an absence of at least one underground facility within a dig area, wherein at least a portion of the dig area is planned to be excavated or disturbed during excavation activities, the method comprising:

A) electronically receiving source data representing at least one input image of a geographic area including the first dig area and the at least one additional dig area, wherein the first dig area corresponds to a first stage of a staged excavation project and the at least one additional dig area corresponds to at least one subsequent stage of the staged excavation project;

B) processing the source data so as to display at least a portion of the at least one input image on a display device;

C) receiving at least one first user input via at least one user input device associated with the display device;

D) adding, based on the at least one first user input, at least one first indicator to the displayed at least one input image to provide at least one indication of the first dig area where the first stage of the staged excavation project is planned to be performed and thereby generate a first generation marked-up digital image;

E) receiving at least one second user input via the at least one user input device;

F) adding, based on the at least one second user input, at least one additional indicator to the first generation marked-up digital image including the at least one indication of the first dig area to provide at least one indication of the at least one additional dig area where the at least one subsequent stage of the staged excavation project is planned to be performed and thereby generate a multi-generational marked-up digital image;

29

- G) adding a first indication to the first generation marked-up digital image and/or the multi-generational marked-up digital image that the first dig area corresponds to the first stage;
- H) adding a second indication to the multi-generational marked-up digital image that the at least one additional dig area corresponds to the at least one subsequent stage; and
- I) electronically transmitting and/or electronically storing information relating to the multi-generational marked-up digital image so as to facilitate the detection of the presence or the absence of the at least one underground facility within the plurality of dig areas.
8. The at least one computer-readable storage medium of claim 7, wherein the method further comprises:
 adding a first excavation date corresponding to the first dig area to the first generation marked-up digital image and/or the multi-generational marked-up digital image; and
 adding a second excavation date corresponding to the at least one additional dig area to the multi-generational marked-up digital image.
9. The at least one computer-readable storage medium of claim 7, wherein I) comprises:
 electronically storing the information relating to the multi-generational marked-up digital image with a corresponding descriptor file comprising information identifying at least one ticket number.
10. The at least one computer-readable storage medium of claim 9, wherein the at least one ticket number comprises a first ticket number corresponding to the first stage of the staged excavation project and at least one additional ticket number corresponding to the at least one subsequent stage of the staged excavation project.
11. The at least one computer-readable storage medium of claim 9, wherein the descriptor file further comprises a first stage identifier corresponding to the first stage of the staged excavation project and at least one additional stage identifier corresponding to the at least one subsequent stage of the staged excavation project.
12. The at least one computer-readable storage medium of claim 9, wherein the descriptor file further comprises a first stage date corresponding to the first stage of the staged excavation project and at least one additional stage date corresponding to the at least one subsequent stage of the staged excavation project.
13. A method for facilitating detection of a presence or an absence of at least one underground facility within a plurality of dig areas comprising a first dig area and at least one additional dig area, wherein at least a portion of the plurality of dig areas is planned to be excavated or disturbed during excavation activities, the method comprising:
 A) electronically receiving source data representing at least one input image of a geographic area including the

30

- first dig area and the at least one additional dig area, wherein the first dig area corresponds to a first stage of a staged excavation project and the at least one additional dig area corresponds to at least one subsequent stage of the staged excavation project;
- B) processing the source data so as to display at least a portion of the at least one input image on a display device;
- C) adding, via at least one user input device associated with the display device, at least one first indicator to the displayed at least one input image to provide at least one indication of the first dig area where the first stage of the staged excavation project is planned to be performed and thereby generate a first generation marked-up digital image;
- D) adding, via the at least one user input device, at least one additional indicator to the first generation marked-up digital image including the at least one indication of the first dig area to provide at least one indication of the at least one additional dig area where the at least one subsequent stage of the staged excavation project is planned to be performed and thereby generate a multi-generational marked-up digital image;
- E) adding a first indication to the first generation marked-up digital image and/or the multi-generational marked-up digital image that the first dig area corresponds to the first stage;
- F) adding a second indication to the multi-generational marked-up digital image that the at least one additional dig area corresponds to the at least one subsequent stage; and
- G) electronically transmitting and/or electronically storing information relating to the multi-generational marked-up digital image so as to facilitate the detection of the presence or the absence of the at least one underground facility within the plurality of dig areas.
14. The method of claim 13, wherein A) through D) are performed at a user location remote from the plurality of dig areas.
15. The method of claim 13, further comprising:
 adding a first excavation date, corresponding to the first dig area, to the first generation marked-up digital image and/or the multi-generational marked-up digital image; and
 adding a second excavation date, corresponding to the at least one additional dig area, to the multi-generational marked-up digital image.
16. The method of claim 13, wherein G) comprises:
 electronically storing the information relating to the multi-generational marked-up digital image with a corresponding descriptor file comprising information identifying at least one ticket number.

* * * * *