



US008424486B2

(12) **United States Patent**
Nielsen et al.

(10) **Patent No.:** **US 8,424,486 B2**
(45) **Date of Patent:** **Apr. 23, 2013**

(54) **MARKER DETECTION MECHANISMS FOR USE IN MARKING DEVICES AND METHODS OF USING SAME**

FOREIGN PATENT DOCUMENTS

CA 2623466 6/2011
CH 695087 A5 12/2005

(Continued)

(75) Inventors: **Steven E. Nielsen**, North Palm Beach, FL (US); **Jeffrey Farr**, Jupiter, FL (US); **Curtis Chambers**, Palm Beach Gardens, FL (US)

OTHER PUBLICATIONS

Bernold, L.. et al. "Equipment operator training in the age of internet2," Proceedings of 19th International Symposium on Automation and Robotics in Construction (ISARC 2002), Sep. 2002 [retrieved on Nov. 12, 2010]. Retrieved from the Internet: <URL: <http://fire.nist.gov/bfrlpubs/build02IPDF/b02059.pdf>>. p. 4, col. 2, para 2.

(Continued)

(73) Assignee: **Certusview Technologies, LLC**, Palm Beach Gardens, FL (US)

(*) Notice: Subject to any disclaimer, the term of this patent is extended or adjusted under 35 U.S.C. 154(b) by 934 days.

(21) Appl. No.: **12/429,947**

(22) Filed: **Apr. 24, 2009**

(65) **Prior Publication Data**

US 2010/0006667 A1 Jan. 14, 2010

Related U.S. Application Data

(60) Provisional application No. 61/079,518, filed on Jul. 10, 2008.

(51) **Int. Cl.**
B05C 11/00 (2006.01)
B67D 7/56 (2010.01)
B05D 1/02 (2006.01)

(52) **U.S. Cl.**
USPC **118/688**; 239/74; 427/421.1

(58) **Field of Classification Search** None
See application file for complete search history.

(56) **References Cited**

U.S. PATENT DOCUMENTS

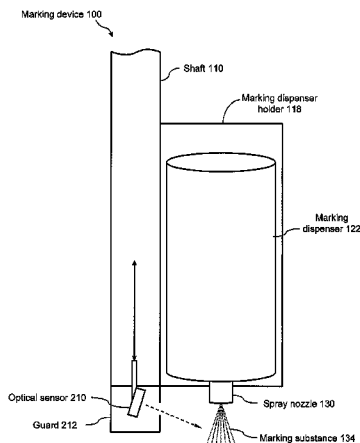
3,988,922 A 11/1976 Clark et al.
4,839,201 A * 6/1989 Rantanen et al. 427/355
5,164,607 A 11/1992 Weigert et al.
5,281,273 A * 1/1994 Emposimato et al. 118/693

(Continued)

(57) **ABSTRACT**

Marking devices for dispensing a marking substance on the ground and marking methods are provided. The marking devices and marking methods use one or more detection mechanisms to detect one or more characteristics of the marking substance. In some embodiments, the detection mechanism may be, but is not limited to, an optical sensor, an olfactory sensor, a weight sensor, a switch device, and any combination thereof. The one or more detection mechanisms may provide, for example, the capability to: (1) determine the type of marking substance that is installed in the marking device; (2) determine in advance of or during a marking operation the amount of marking substance within the marking dispenser; and (3) determine when the marking dispenser is becoming empty.

30 Claims, 9 Drawing Sheets



U.S. PATENT DOCUMENTS			2009/0204625 A1			8/2009 Chambers et al.		
5,467,271	A	11/1995	Abel et al.	2009/0207019	A1	8/2009	Nielsen et al.	
5,486,067	A	1/1996	Huynh	2009/0208642	A1	8/2009	Nielsen et al.	
5,751,450	A	5/1998	Robinson	2009/0210098	A1	8/2009	Nielsen et al.	
5,918,565	A	7/1999	Casas	2009/0210284	A1	8/2009	Nielsen et al.	
6,026,135	A	2/2000	McFee et al.	2009/0210285	A1	8/2009	Nielsen et al.	
6,037,010	A	3/2000	Kahmann et al.	2009/0210297	A1	8/2009	Nielsen et al.	
6,053,260	A	4/2000	Boon	2009/0210298	A1	8/2009	Nielsen et al.	
6,064,940	A	5/2000	Rodgers	2009/0237408	A1	9/2009	Nielsen et al.	
6,074,693	A	6/2000	Manning	2009/0238414	A1	9/2009	Nielsen et al.	
6,095,081	A	8/2000	Gochenour	2009/0238415	A1	9/2009	Nielsen et al.	
6,138,906	A	10/2000	DeMayo	2009/0238416	A1	9/2009	Nielsen et al.	
6,292,108	B1	9/2001	Straser et al.	2009/0238417	A1	9/2009	Nielsen et al.	
6,294,022	B1	9/2001	Eslambolchi et al.	2009/0241045	A1	9/2009	Nielsen et al.	
6,299,934	B1	10/2001	Manning	2009/0241046	A1	9/2009	Nielsen et al.	
6,390,336	B1	5/2002	Orozco	2009/0324815	A1	12/2009	Nielsen et al.	
6,437,708	B1	8/2002	Brouwer	2009/0327024	A1	12/2009	Nielsen et al.	
6,438,239	B1	8/2002	Kuechen	2010/0010862	A1	1/2010	Nielsen et al.	
6,526,400	B1	2/2003	Takata	2010/0010863	A1	1/2010	Nielsen et al.	
6,564,154	B1	5/2003	Zimmerman et al. 702/24	2010/0010882	A1	1/2010	Nielsen et al.	
6,658,148	B1	12/2003	Fung et al.	2010/0010883	A1	1/2010	Nielsen et al.	
6,769,462	B2	8/2004	Larson et al.	2010/0084532	A1	4/2010	Nielsen et al.	
6,915,955	B2	7/2005	Jung et al.	2010/0085054	A1	4/2010	Nielsen et al.	
6,941,890	B1	9/2005	Cristo et al.	2010/0085185	A1	4/2010	Nielsen et al.	
6,947,028	B2	9/2005	Shkolnikov	2010/0085376	A1	4/2010	Nielsen et al.	
7,009,399	B2	3/2006	Olsson et al.	2010/0085694	A1	4/2010	Nielsen et al.	
7,110,142	B2	9/2006	Mestha et al.	2010/0085701	A1	4/2010	Nielsen et al.	
7,233,394	B2	6/2007	Odhner	2010/0086671	A1	4/2010	Nielsen et al.	
7,240,839	B2	7/2007	Jung et al.	2010/0086677	A1	4/2010	Nielsen et al.	
7,298,483	B2	11/2007	Jung et al.	2010/0088031	A1	4/2010	Nielsen et al.	
7,319,387	B2	1/2008	Willson et al.	2010/0088032	A1	4/2010	Nielsen et al.	
7,372,247	B1	5/2008	Giusti et al.	2010/0088134	A1	4/2010	Nielsen et al.	
7,443,154	B1	10/2008	Merewether et al.	2010/0088135	A1	4/2010	Nielsen et al.	
7,451,721	B1	11/2008	Garza et al.	2010/0088164	A1	4/2010	Nielsen et al.	
7,640,105	B2	12/2009	Nielsen et al.	2010/0090700	A1	4/2010	Nielsen et al.	
7,929,981	B2	4/2011	Sangberg	2010/0090858	A1	4/2010	Nielsen et al.	
8,155,390	B2	4/2012	Nielsen et al.	2010/0094553	A1	4/2010	Nielsen et al.	
2002/0014415	A1	2/2002	Nakayama et al. 205/317	2010/0097224	A1	4/2010	Prodanovich	
2002/0053608	A1	5/2002	Zeck et al. 239/150	2010/0117654	A1	5/2010	Nielsen et al.	
2002/0103625	A1	8/2002	Card et al.	2010/0146454	A1	6/2010	Sugahara	
2002/0115472	A1	8/2002	Andress	2010/0188088	A1	7/2010	Nielsen et al.	
2002/0155389	A1	10/2002	Rangarajan et al. 430/314	2010/0188215	A1	7/2010	Nielsen et al.	
2003/0080897	A1	5/2003	Tranchina	2010/0188216	A1	7/2010	Nielsen et al.	
2003/0168834	A1	9/2003	Ulrich	2010/0188245	A1	7/2010	Nielsen et al.	
2003/0196585	A1	10/2003	McDonald et al.	2010/0188407	A1	7/2010	Nielsen et al.	
2004/0051368	A1	3/2004	Caputo	2010/0189312	A1	7/2010	Nielsen et al.	
2004/0124988	A1	7/2004	Leonard et al.	2010/0189887	A1	7/2010	Nielsen et al.	
2005/0023367	A1	2/2005	Reighard	2010/0198663	A1	8/2010	Nielsen et al.	
2005/0156600	A1	7/2005	Olsson	2010/0201690	A1	8/2010	Nielsen et al.	
2005/0232475	A1	10/2005	Floeder	2010/0201706	A1	8/2010	Nielsen et al.	
2006/0085133	A1	4/2006	Young	2010/0205031	A1	8/2010	Nielsen et al.	
2006/0220955	A1	10/2006	Hamilton	2010/0205032	A1	8/2010	Nielsen et al.	
2006/0262963	A1	11/2006	Navulur	2010/0205195	A1	8/2010	Nielsen et al.	
2006/0276985	A1	12/2006	Xu	2010/0205264	A1	8/2010	Nielsen et al.	
2006/0289679	A1	12/2006	Johnson et al. 239/333	2010/0205536	A1	8/2010	Nielsen et al.	
2007/0031042	A1	2/2007	Simental	2010/0205554	A1	8/2010	Nielsen et al.	
2007/0040558	A1	2/2007	Overby et al.	2010/0205555	A1	8/2010	Nielsen et al.	
2007/0219722	A1	9/2007	Sawyer, Jr.	2010/0228588	A1	9/2010	Nielsen et al.	
2007/0223803	A1	9/2007	Shindo	2010/0245086	A1	9/2010	Nielsen et al.	
2007/0268110	A1	11/2007	Little	2010/0247754	A1	9/2010	Nielsen et al.	
2008/0010009	A1	1/2008	Miyoshi	2010/0253511	A1	10/2010	Nielsen et al.	
2008/0013940	A1	1/2008	Jung	2010/0253513	A1	10/2010	Nielsen et al.	
2008/0204322	A1	8/2008	Oswald et al.	2010/0253514	A1	10/2010	Nielsen et al.	
2008/0245299	A1	10/2008	Nielsen et al. 118/712	2010/0255182	A1	10/2010	Nielsen et al.	
2008/0255795	A1	10/2008	Shkolnikov	2010/0256825	A1	10/2010	Nielsen et al.	
2008/0310721	A1	12/2008	Yang	2010/0256912	A1	10/2010	Nielsen et al.	
2009/0013928	A1	1/2009	Nielsen et al.	2010/0256981	A1	10/2010	Nielsen et al.	
2009/0109081	A1	4/2009	Ryerson	2010/0257029	A1	10/2010	Nielsen et al.	
2009/0171616	A1	7/2009	Zhang et al.	2010/0257477	A1	10/2010	Nielsen et al.	
2009/0185858	A1	7/2009	Malit	2010/0259381	A1	10/2010	Nielsen et al.	
2009/0201178	A1	8/2009	Nielsen et al.	2010/0259414	A1	10/2010	Nielsen et al.	
2009/0201311	A1	8/2009	Nielsen et al.	2010/0262470	A1	10/2010	Nielsen et al.	
2009/0202101	A1	8/2009	Nielsen et al.	2010/0262670	A1	10/2010	Nielsen et al.	
2009/0202110	A1	8/2009	Nielsen et al.	2010/0263591	A1	10/2010	Nielsen et al.	
2009/0202111	A1	8/2009	Nielsen et al.	2010/0268786	A1	10/2010	Nielsen et al.	
2009/0202112	A1	8/2009	Nielsen et al.	2010/0272885	A1	10/2010	Olsson	
2009/0204238	A1	8/2009	Nielsen et al.	2010/0285211	A1	11/2010	Nielsen et al.	
2009/0204466	A1	8/2009	Nielsen et al.	2010/0318401	A1	12/2010	Nielsen et al.	
2009/0204614	A1	8/2009	Nielsen et al.	2010/0318402	A1	12/2010	Nielsen et al.	

2010/0318465 A1 12/2010 Nielsen et al.
 2010/0324967 A1 12/2010 Nielsen et al.
 2011/0007076 A1 1/2011 Nielsen et al.
 2011/0020776 A1 1/2011 Nielsen et al.
 2011/0022433 A1 1/2011 Nielsen et al.
 2011/0035245 A1 2/2011 Nielsen et al.
 2011/0035251 A1 2/2011 Nielsen et al.
 2011/0035252 A1 2/2011 Nielsen et al.
 2011/0035260 A1 2/2011 Nielsen et al.
 2011/0035324 A1 2/2011 Nielsen et al.
 2011/0035328 A1 2/2011 Nielsen et al.
 2011/0040589 A1 2/2011 Nielsen et al.
 2011/0040590 A1 2/2011 Nielsen et al.
 2011/0045175 A1 2/2011 Nielsen et al.
 2011/0046993 A1 2/2011 Nielsen et al.
 2011/0046994 A1 2/2011 Nielsen et al.
 2011/0046999 A1 2/2011 Nielsen et al.
 2011/0060496 A1 3/2011 Nielsen et al.
 2011/0060549 A1 3/2011 Nielsen et al.
 2011/0095885 A9 4/2011 Nielsen et al.
 2011/0131081 A1 6/2011 Nielsen et al.
 2011/0137769 A1 6/2011 Nielsen et al.
 2011/0236588 A1 9/2011 Nielsen et al.
 2011/0279229 A1 11/2011 Nielsen et al.
 2011/0279230 A1 11/2011 Nielsen et al.
 2011/0279476 A1 11/2011 Nielsen et al.
 2011/0282542 A9 11/2011 Nielsen et al.
 2011/0283217 A1 11/2011 Nielsen et al.
 2011/0285749 A1 11/2011 Nielsen et al.
 2012/0019380 A1 1/2012 Nielsen et al.

2012/0036140 A1 2/2012 Nielsen et al.
 2012/0065924 A1 3/2012 Nielsen et al.
 2012/0065944 A1 3/2012 Nielsen et al.
 2012/0066137 A1 3/2012 Nielsen et al.
 2012/0066273 A1 3/2012 Nielsen et al.
 2012/0066506 A1 3/2012 Nielsen et al.
 2012/0069178 A1 3/2012 Nielsen et al.
 2012/0072035 A1 3/2012 Nielsen et al.
 2012/0110019 A1 5/2012 Nielsen et al.
 2012/0113244 A1 5/2012 Nielsen et al.

FOREIGN PATENT DOCUMENTS

EP	1974638	10/2008
WO	WO9516827	6/1995
WO	WO0194016	12/2001
WO	WO0228541	4/2002

OTHER PUBLICATIONS

New Mexico's Recommended Marking Guidelines for Underground Utilities, May 2006, 8 pages.
 Product Data, Hard Hat Aerosols Marking Paint 2300; Rust-oleum Netherlands B.V., Apr. 2005, 1 page, <http://www.rustoleum.co.uk/downloads/2300%20Marking%20Spray.pdf>.
 Product Data, "Inverted Marking Chalk," Rust-oleum, Jul. 2004, 2 pages, http://www.policeone.com/pdfs/markinchalkinfo_ro.pdf.
 Virginia Underground utility marking standard, Mar. 2004, 20 pages.

* cited by examiner

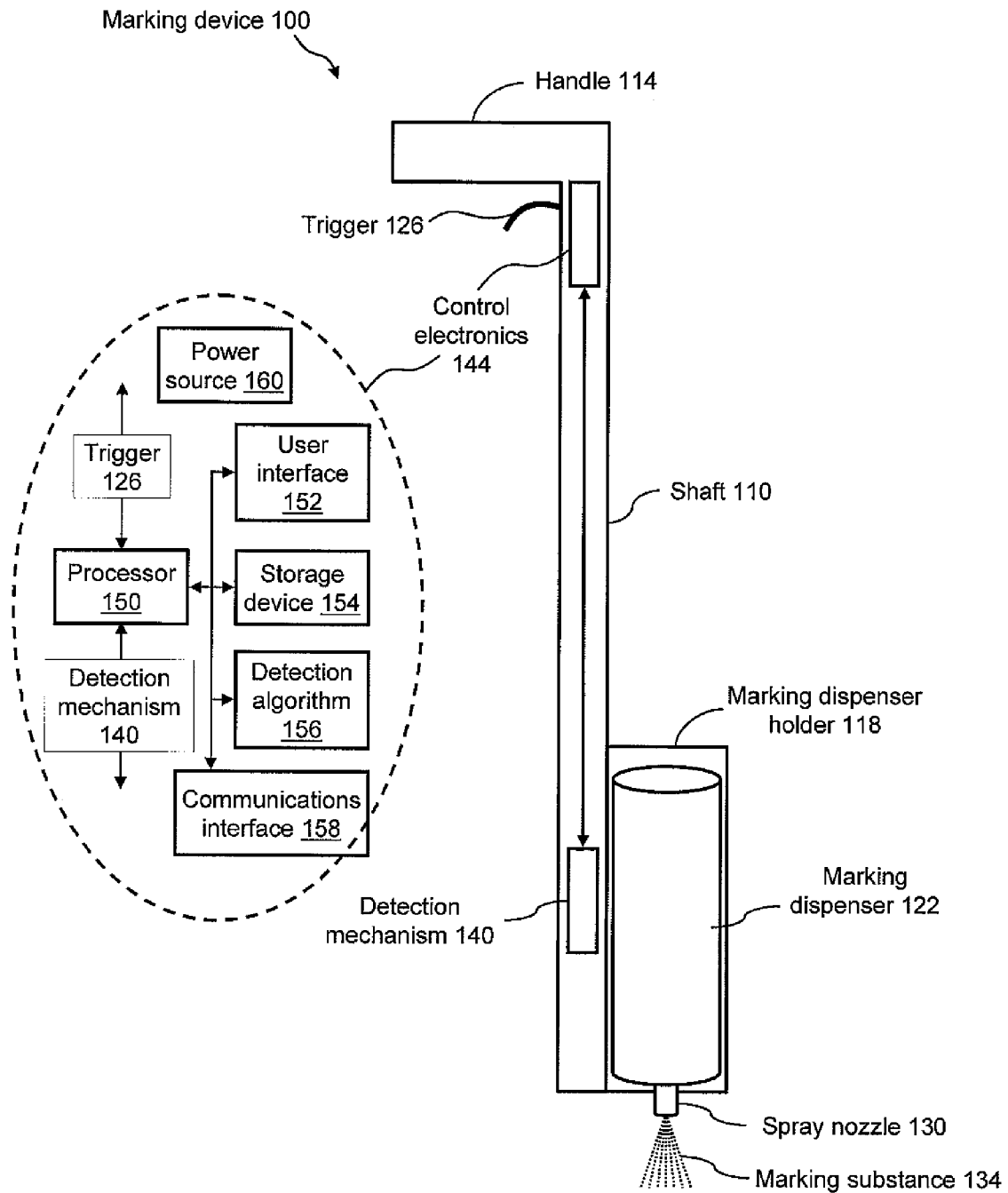


FIG. 1

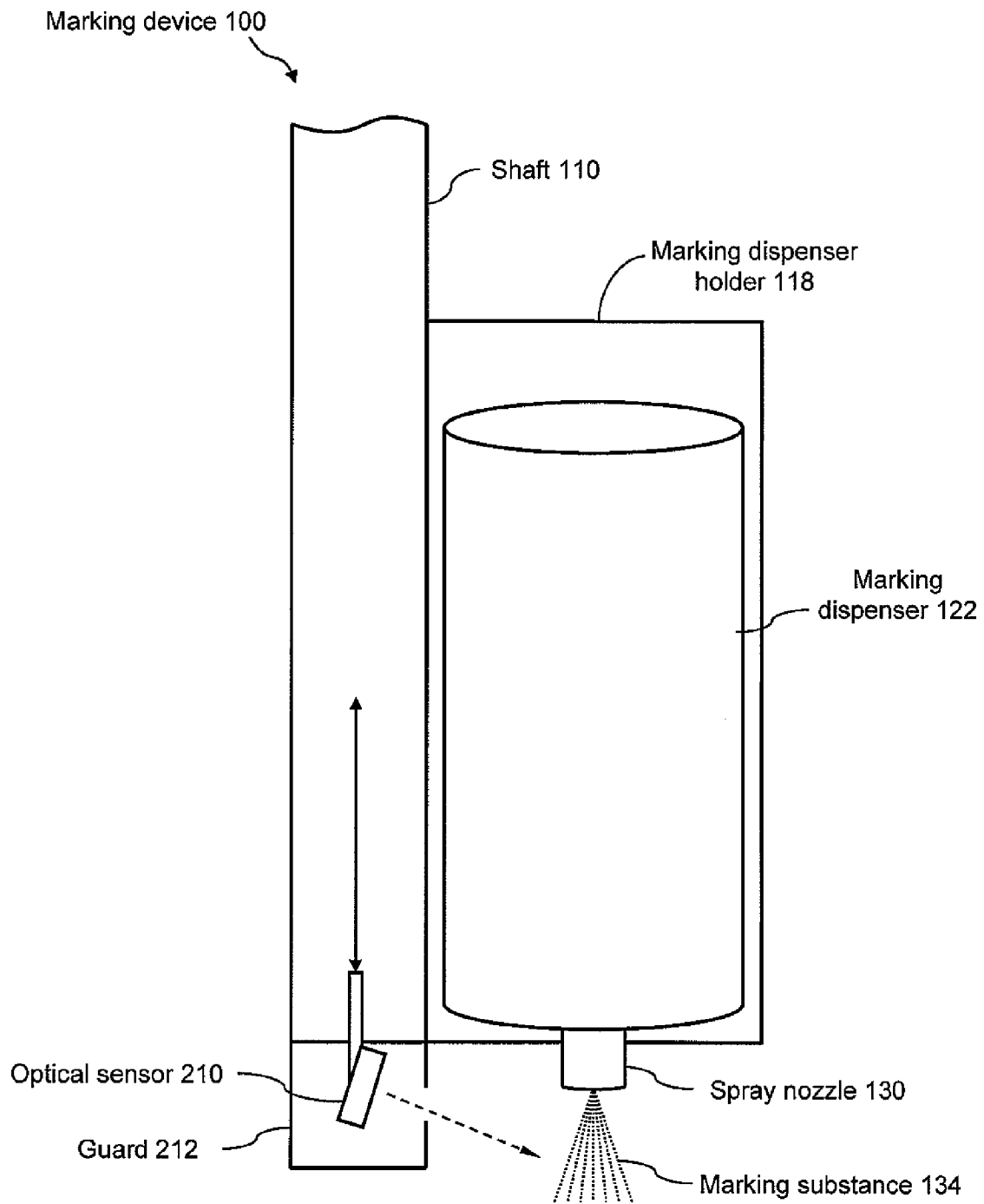


FIG. 2

Method 300

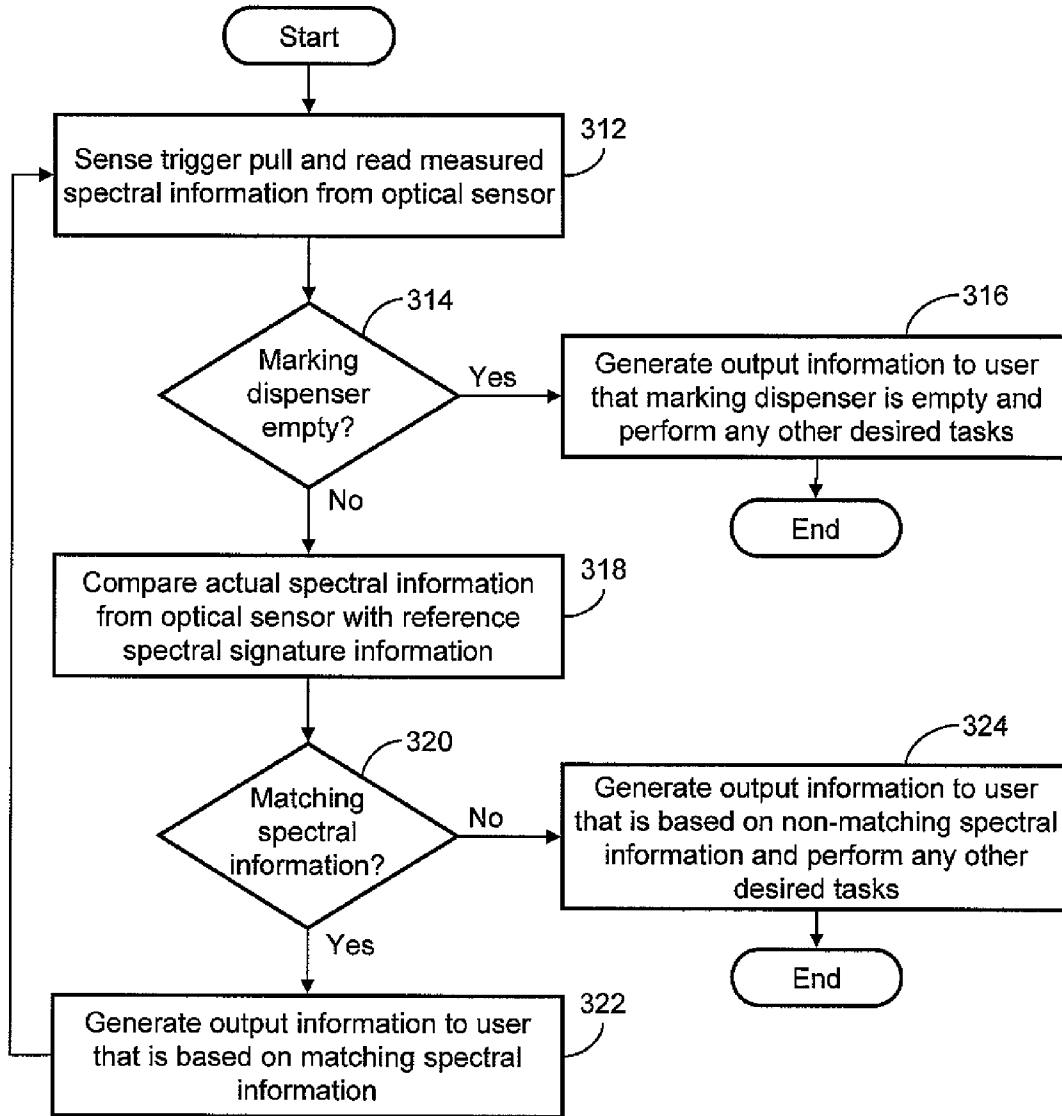


FIG. 3

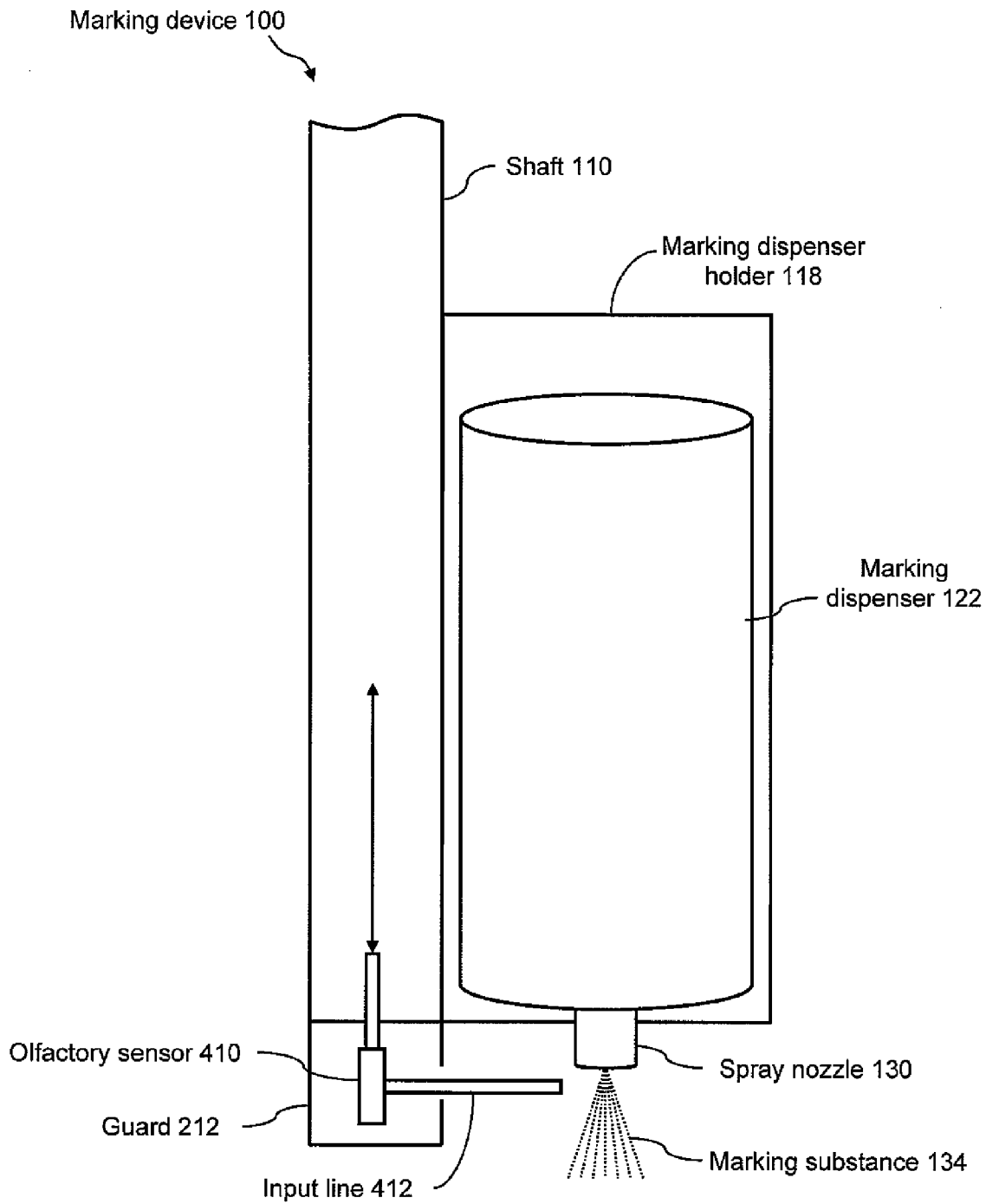


FIG. 4

Method 500

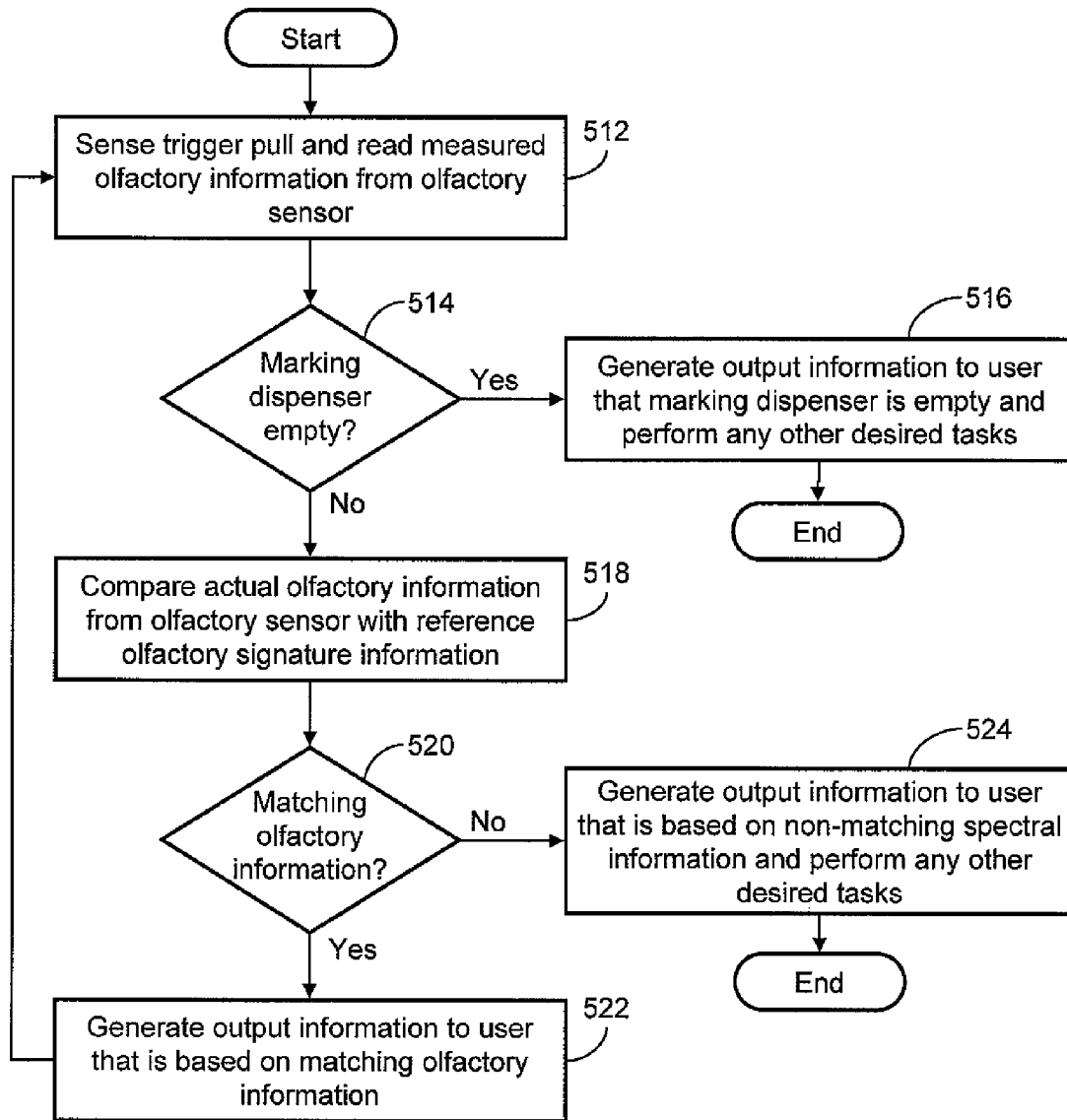


FIG. 5

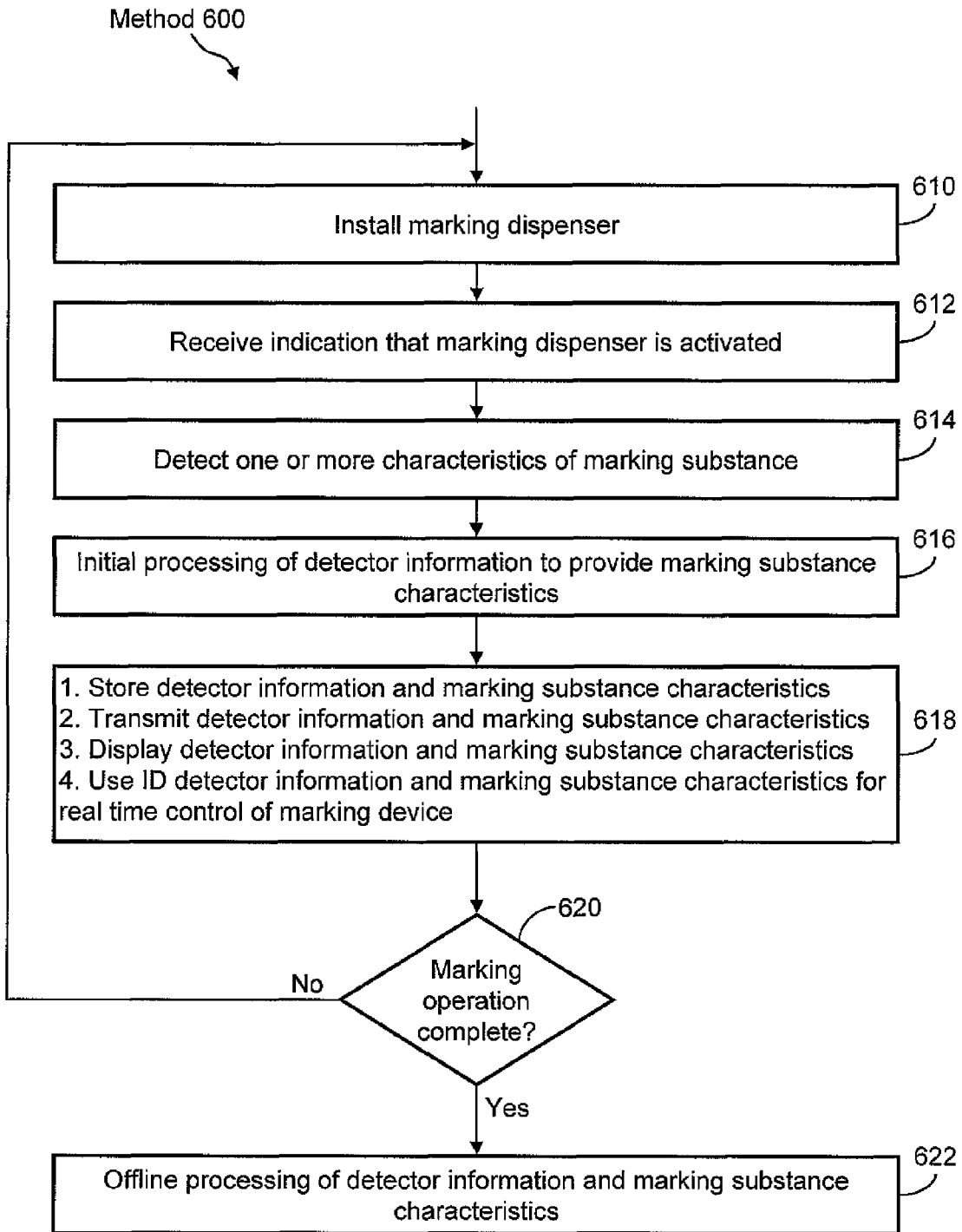


FIG. 6

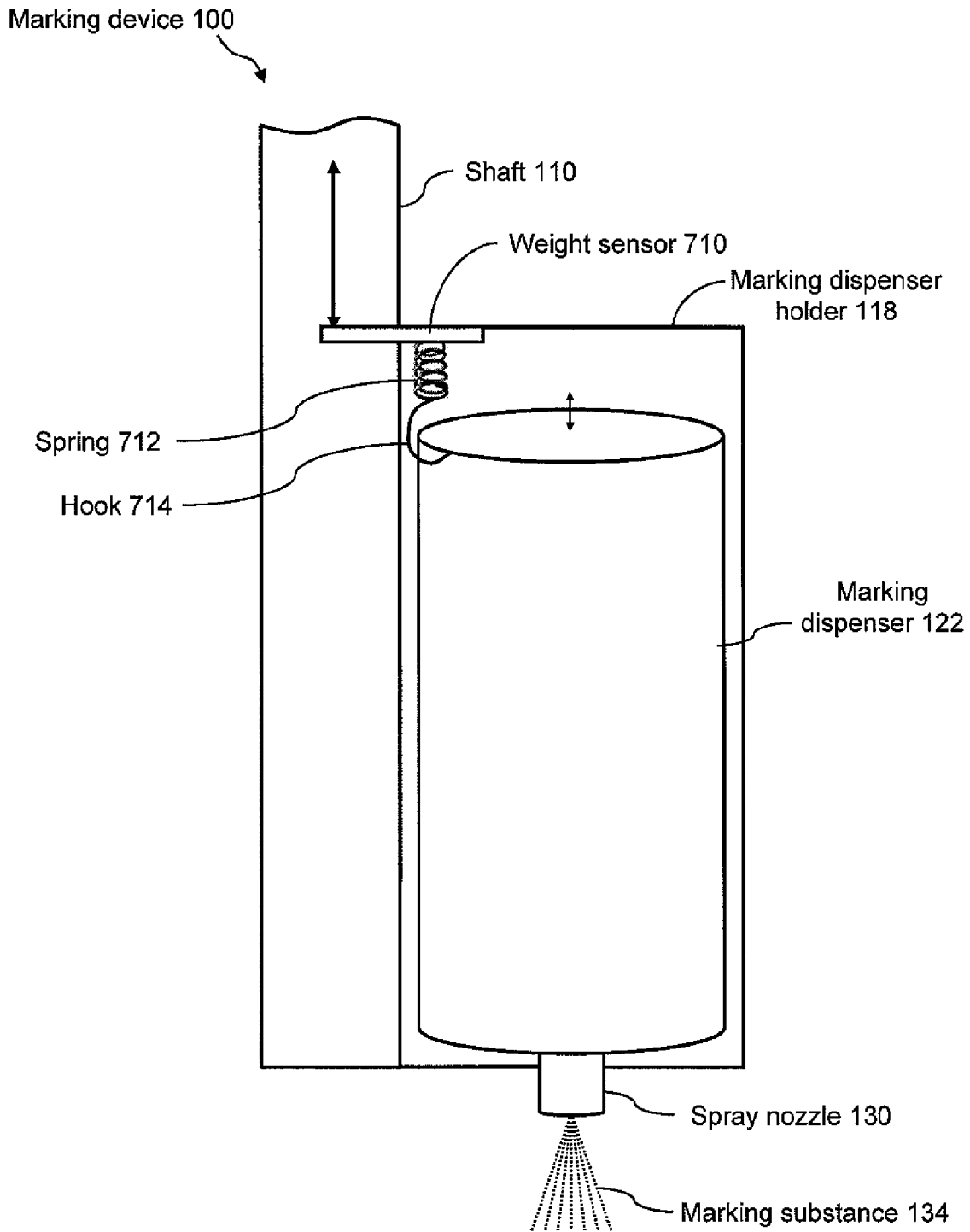


FIG. 7

Method 800

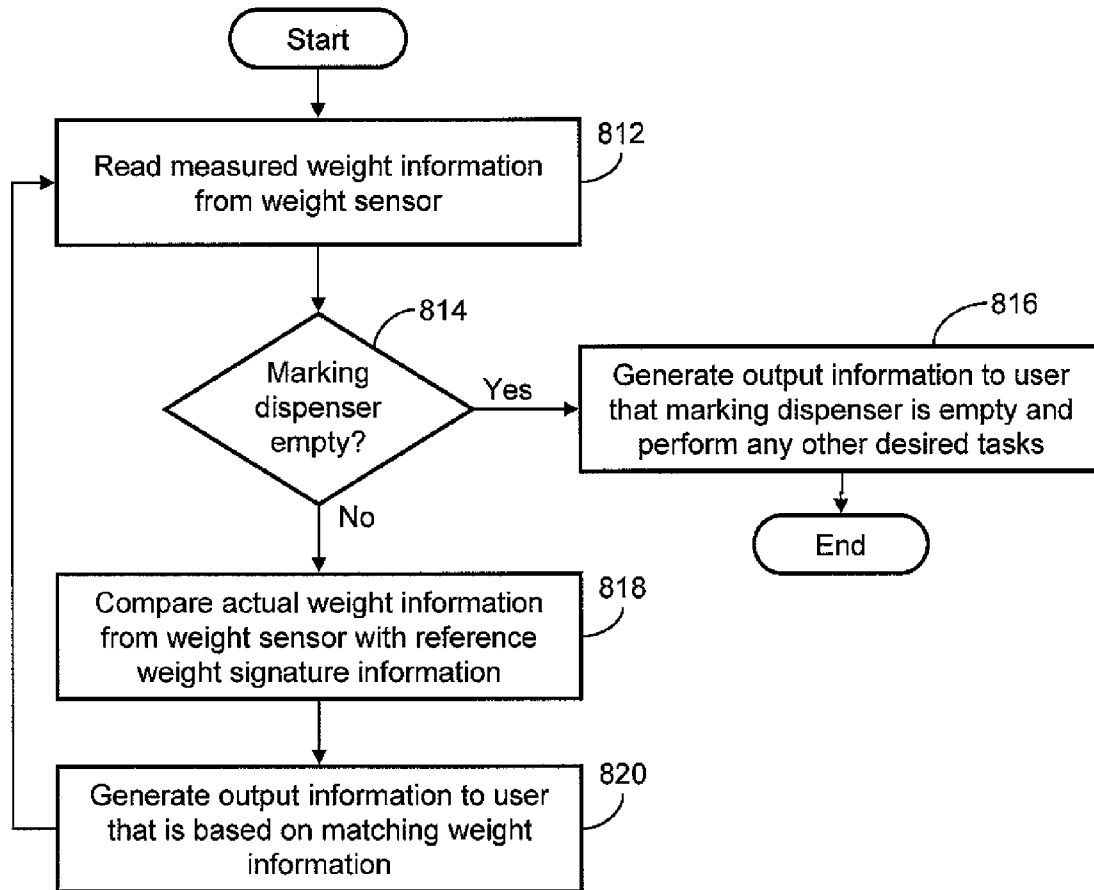


FIG. 8

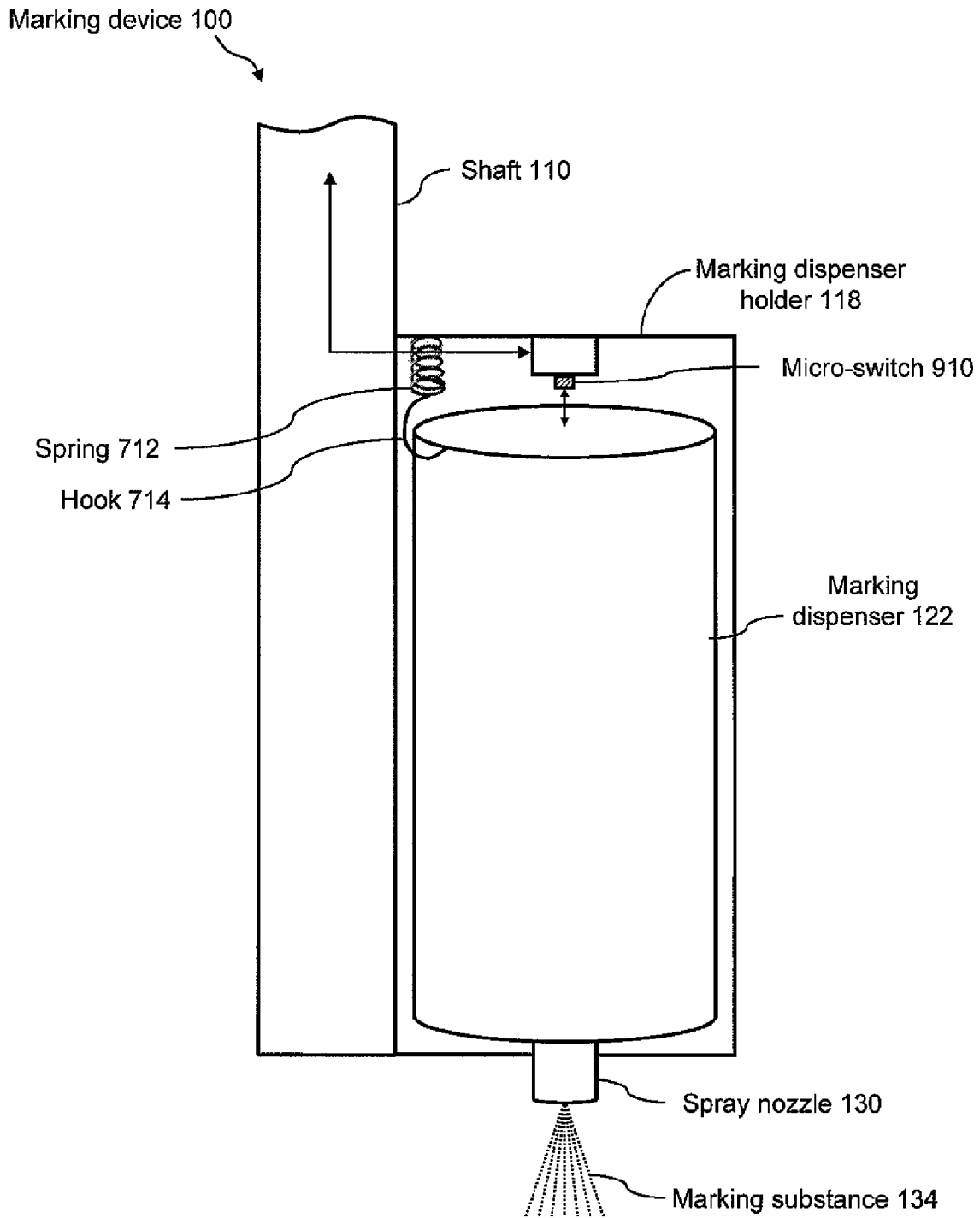


FIG. 9

1

MARKER DETECTION MECHANISMS FOR USE IN MARKING DEVICES AND METHODS OF USING SAME

CROSS REFERENCE TO RELATED APPLICATION

This application claims priority based on Provisional Application Ser. No. 61/079,518, filed Jul. 10, 2008, which is hereby incorporated by reference in its entirety.

FIELD OF THE INVENTION

The present invention relates generally to the field of marking devices for placing marks on the ground. In particular, the present invention relates to marker detection mechanisms for use in marking devices and methods of using same.

BACKGROUND

Marking paint, such as inverted marking spray paint (also known as "upside down paint"), may be used by land surveyors, underground facility locate technicians, or anyone that has a need to mark a location on the ground. Marking paint may be dispensed onto the ground using marking devices, such as paint marking wands, applicators, and/or wheels.

In many marking applications, a specified marking paint color may be required for identifying a particular facility or entity. For example, once located, an underground power line may be marked with one color, an underground telephone line may be marked with another color, an underground gas line may be marked with yet another color, and so on. Paint durability and/or ease of removal of the marking paint may also be important. These marking paint characteristics may vary depending on the surface on which the marking paint is applied (e.g., pavement, grass, gravel, and so on). Consequently, marking paint may be formulated to vary in accordance with durability and/or ease of removal specifications for different surfaces and uses. For example, municipalities may require that marking paint on streets and sidewalks fade away within a specified period of time. Therefore, it may be beneficial to develop mechanisms for ensuring, for example, that the proper color and/or formulation of marking paint is being used and/or has been used.

In addition, certain inefficiencies may exist in marking applications when the user of the marking device is unaware of the amount of marking paint contained within a paint dispenser. For example, if a large marking operation is begun with a partially filled paint dispenser, the paint dispenser may become empty before the marking operation is complete. Consequently, the marking operation may be interrupted while the user retrieves another full paint dispenser to replace the empty paint dispenser and resumes the marking operation. Therefore, it may be beneficial to develop ways for the user and/or remote supervisor to know and record the type and amount of marking paint present in the marking device, the corresponding paint marking distance and/or when the paint dispenser is becoming empty.

Accordingly, approaches are needed for automatically determining the characteristics, such as color and durability, of marking paint used in a marking operation, such as an underground facility locate operation; for monitoring the amount of marking paint present in the marking dispenser and/or for determining when the marking dispenser is becoming empty.

SUMMARY OF THE INVENTION

According to a first aspect of the invention, a marking apparatus is provided to mark the presence or absence of an

2

underground facility in a dig area. The marking apparatus comprises: a housing configured to enable dispensing of a marking substance onto the ground for marking the presence or absence of an underground facility in a dig area; a marking dispenser holder affixed to the housing to hold at least one marking dispenser; an actuator to cause dispensing of the marking substance from the marking dispenser onto the ground in the dig area, in a marking operation, to mark the presence or absence of an underground facility; at least one marking substance detection mechanism to detect one or more characteristics of the marking substance dispensed from the marking dispenser and to provide detector information representative of the one or more characteristics; and a processing device to generate output information in response to the detector information, the output information representing the one or more characteristics of the marking substance.

According to a second aspect of the invention, a method is provided for performing a marking operation for marking the presence or absence of an underground facility in a dig area using a marking apparatus that holds at least one marking dispenser. The method comprises: dispensing a marking substance from the marking dispenser onto the ground in the dig area, in a marking operation, to mark the presence or absence of an underground facility, in response to activation of the marking dispenser; detecting one or more characteristics of the marking substance dispensed from the marking dispenser and providing detector information representative of the one or more characteristics; and generating output information in response to the detector information, the output information representing the one or more characteristics of the marking substance.

BRIEF DESCRIPTION OF THE DRAWINGS

For the purpose of illustrating the present invention, the drawings show aspects of one or more embodiments of the present invention. However, it should be understood that the present invention is not limited to the precise arrangements and instrumentalities shown in the drawings, wherein:

FIG. 1 is a schematic diagram of a marking device that includes a detection mechanism, and a block diagram of the control electronics of the marking device;

FIG. 2 is a schematic diagram of a marking device that includes an optical sensor;

FIG. 3 is a flow diagram of an embodiment of a method of using the marking device that includes the optical sensor for identifying the composition and/or type of marking substance in the marking dispenser;

FIG. 4 is a schematic diagram of a marking device that includes an olfactory sensor;

FIG. 5 is a flow diagram of a method of using the marking device that includes the olfactory sensor for identifying the composition and/or type of marking substance in the marking dispenser;

FIG. 6 is a flow diagram of a method of using a detection mechanism in a system for processing marking substance information;

FIG. 7 is a schematic diagram of a marking device that includes a weight sensor;

FIG. 8 is a flow diagram of a method of using the marking device that includes the weight sensor for determining the amount of marking substance in the marking dispenser; and

FIG. 9 is a schematic diagram of a marking device that includes an out-of-paint sensor.

DETAILED DESCRIPTION

The invention relates to marking devices for dispensing a marking substance on the ground and to marking methods.

The marking devices and marking methods use one or more detection mechanisms to detect one or more characteristics of the marking substance. In some embodiments of the invention, the detection mechanism may be, but is not limited to, an optical sensor, an olfactory sensor, a weight sensor, a switch device, and any combinations thereof. The one or more detection mechanisms may provide, for example, the capability to: (1) determine the type of marking substance that is installed in the marking device; (2) determine in advance of or during a marking operation the amount of marking substance within the marking dispenser; and (3) determine when the marking dispenser is becoming empty.

FIG. 1 is a schematic diagram of a marking device 100 that includes at least one detection mechanism. The marking device 100 is also referred to herein as a "marking apparatus." FIG. 1 also shows a block diagram of the control electronics of marking device 100. In particular, marking device 100 may include a detection mechanism for detecting the type of marking substance, detecting the amount of marking substance in the marking dispenser, and/or detecting when the marking dispenser is becoming empty.

Marking device 100 may include a shaft 110, a handle 114 at one end of shaft 110, and a marking dispenser holder 118 for holding a marking dispenser 122 at the end of shaft 110 that is opposite handle 114. Additionally, marking device 100 may include a trigger 126 for actuating a spray nozzle 130 of marking dispenser 122 to dispense a marking substance 134 onto the target of a marking operation, such as the ground. Marking dispenser 122 may be an aerosol canister that contains a quantity of a marking substance 134. Marking substance 134 may be, for example, marking paint, marking chalk, marking dye, marking powder, and the like. In one example, marking dispenser 122 may be an aerosol canister that contains marking paint, such as commercially available marking paint. Marking device 100 may be configured to hold a single marking dispenser or more than one marking dispenser.

A basic marking operation of marking device 100 may be described as follows. A user, such as a locate technician in, for example, an underground facility locate application, loads a marking dispenser 122 that contains a quantity of marking substance 134 into marking dispenser holder 118. The user grasps handle 114 of marking device 100 and aims nozzle 130 of marking dispenser 122 at the intended target. The user then pulls trigger 126, which may be mechanically coupled to spray nozzle 130 of marking dispenser 122, in order to dispense marking substance 134 in a specified pattern on the intended target, such as the ground. For example, marking device 100 may be used to mark lines, arrows, geometric shapes, numbers, letters, words, and any combinations thereof on the ground.

Marking device 100 further includes at least one marking substance detection mechanism 140 and control electronics 144, as described below. In some embodiments, marking device 100 is configured for mounting a single marking dispenser and includes at least one detection mechanism. In other embodiments, marking device 100 is configured for mounting one or more marking dispensers and includes one or more detection mechanisms for each marking dispenser. In further embodiments, marking device 100 includes two or more detection mechanisms of the same or different types.

Marking substance detection mechanism 140 may include any sensor or device that provides information about a characteristic of marking substance 134, such as color or formulation, durability and/or amount of the marking substance 134 in marking dispenser 122. For example, detection mechanism 140 may include, but is not limited to, optical sensing devices,

weight sensing devices, olfactory sensing devices, switching devices, other mechanical/electrical components, and any combinations thereof. The location of the detection mechanism 140 relative to marking dispenser 122 may vary depending on the type or function of the sensing device. The detection of marking substance 134 may be direct, as in the case of an optical sensor, or may be indirect, as in the case of a weight sensor that senses the weight of marking dispenser 122 and marking substance 134. Non-limiting examples of detection mechanism 140 are described in more detail with reference to FIGS. 2 through 9.

Control electronics 144 is provided for, among other purposes, communicating with and processing information from detection mechanism 140. Control electronics 144 may include a processor 150, a user interface 152, a storage device 154, a detection algorithm 156, a communications interface 158, and a power source 160. Detection algorithm 156 may be implemented as a software module executed by processor 150 and stored in storage device 154, or as a separate coprocessor controlled by processor 150. Power source 160 of control electronics 144 may be, for example, one or more rechargeable or non-rechargeable batteries.

Processor 150 may be any general purpose or special purpose processor, controller, microcontroller, or digital signal processor (DSP) device for managing the overall control of marking device 100. Processor 150 may be a programmable processor that is capable of executing program instructions of, for example, detection algorithm 156. Additionally, processor 150 manages the communication between trigger 126, detection mechanism 140, user interface 152, storage device 154, and detection algorithm 156.

User interface 152 may be, for example, any visual and/or audible device that may be used in order to provide feedback (depending on the type and function of detection mechanism 140) to the user of the marking device 100. For example, user interface 152 may include visual devices, such as one or more light-emitting diode (LED) devices and/or a display device, and one or more audible devices, such as a buzzer, a beeper, a speaker, and the like. User interface 152 may also include one or more input devices, such as a touch screen or a keypad, to receive user inputs.

In one example, selected information, including but not limited to detected information from detection mechanism 140 and/or information generated by detection algorithm 156, may be stored locally in storage device 154. Non-limiting examples of information that may be stored in storage device 154 are described in more detail with reference to FIGS. 2 through 9. Storage device 154 may be any volatile or non-volatile data storage device, such as, but not limited to, a random access memory (RAM) device and a removable memory device (e.g., a USB flash drive). Optionally, storage device 154 is not included in control electronics 144. Instead, embedded memory (not shown) within processor 150 may be used for caching information during the operation of marking device 100.

Detection algorithm 156 may process and interpret information received from detection mechanism 140 and then issue a response, if necessary. The functions of detection algorithm 156 may vary depending on the type and function of detection mechanism 140. For example, detection algorithm 156 may process and interpret optical sensor information, weight sensor information, olfactory sensor information, switch information, and any combinations thereof. The general operations of detection algorithm 156 may include, but are not limited to: (1) reading reference detection information; (2) reading measured detection information from detection mechanism 140; (3) comparing the measured detec-

tion information from detection mechanism **140** with the reference detection information; (4) determining whether there is a match between the measured detection information from detection mechanism **140** and the reference detection information; and (5) generating output information that is based on the comparison and/or specified rules. Non-limiting examples of the operation of detection algorithm **156** in combination with detection mechanism **140** are described in more detail with reference to FIGS. **2** through **9**.

Communications interface **158** may be any wired and/or wireless interface by which data is transmitted from marking device **100** to an external or remote device, such as a remote computing device. The remote computing device may be, for example, a computer in the user's vehicle and/or a server at a central location. Examples of wired interfaces may include, but are not limited to, universal serial bus (USB) ports, RS232 connectors, RJ45 connectors, and any combinations thereof. Examples of wireless interfaces may include, but are not limited to, Bluetooth® technology and IEEE 802.11 technology. Information received from detection mechanism **140** may be transmitted in real time or non-real time from marking device **100** via communications interface **158** with or without being stored locally in storage device **154** and with or without being processed.

In one example, detection mechanism **140** and control electronics **144** may be integrated into any commercially available marking device to form marking device **100**. Alternatively, detection mechanism **140** and control electronics **144** may be integrated into the marking systems that are described in U.S. patent application Ser. No. 11/696,606, filed Apr. 4, 2007 and published Oct. 9, 2008 as Publication No. 2008/0245299, entitled "Marking system and method"; and U.S. patent application Ser. No. 11/685,602, filed Mar. 13, 2007 and published Sep. 19, 2008 as Publication No. 2008/0228294, entitled "Marking system and method with location and/or time tracking," both of which are incorporated by reference herein in their entirety.

FIG. **2** is a schematic diagram of the lower end of marking device **100**, including a detection mechanism in the form of an optical sensor **210**. Optical sensor **210** is mounted near marking dispenser holder **118** such that there is a "line of sight" between optical sensor **210** and marking substance **134** as it is dispensed from spray nozzle **130** of marking dispenser **122**. An overspray guard **212** may be utilized to limit buildup of marking substance **134** on the optical window of optical sensor **210**.

In one example, optical sensor **210** may be a spectrometer (or reflectance spectrometer) device, which is an optical instrument that is used to measure properties of light over a specific portion of the electromagnetic spectrum. Spectrometers are typically used to perform spectroscopic analysis to identify materials. In a marking application that uses marking device **100**, the spectrometer (e.g., optical sensor **210**) is used to perform spectroscopic analysis to identify marking substance **134**, which may be one of a variety of colors and formulations of marking substance **134**. Commercially available low power, compact spectrometer devices may be suitable for use as optical sensor **210** of marking device **100**. The output signal from optical sensor **210** depends on the type of optical sensor used and may be a digital or analog signal. When the optical sensor **210** is a spectrometer, the output signal from optical sensor **210** represents the spectrum of marking substance **134**. The output signal of optical sensor **210** may be utilized directly to determine the characteristics of the marking substance or may be preprocessed by processor **150** to simplify analysis. For example, processor **150** may

convert the measured spectral information to a numerical value for comparison with the values in Table 1 below.

Optionally, a light source (not shown) may be utilized in combination with optical sensor **210** to provide a consistent light intensity within the field of view of optical sensor **210**. The light source may be any light source, such as, but not limited to, a white or colored light source, a laser source, an ultraviolet (UV) light source, and the like. Optionally, unique optical markers may be added to the chemical formulations of compositions and/or types of marking substances **134** in order to provide a unique detectable spectrum for the different compositions and/or types of marking substances **134**. In one example, a black light may be used in combination with optical sensor **210** to detect UV markers that have been added to the chemical formulations of marking substances **134**.

In this embodiment, the spectral signature of each of the possible colors, types, durabilities, manufacturers, and the like of marking substances **134** are predetermined and stored, for example, in storage device **154**. In a learning mode, the optical sensor **210** may be used to measure the spectrum information of each composition and/or type of marking substance **134** of interest. The spectrum measurements of the different compositions and/or types of marking substances **134** may be stored in order to provide a set of reference spectral signatures for later comparison with measured spectral signatures. Then, the same optical sensor **210** is used to measure the spectral signatures of marking substances dispensed by the marking device. In this approach, the effect of differences among optical sensors **210** is eliminated. In another approach, spectral signatures are measured by a reference optical sensor to provide reference spectral signatures, and the reference spectral signatures are provided, such as by downloading, to one or more marking devices. The measured spectral signature of marking substance **134** is compared to the reference spectral signatures to identify the marking substance **134** being dispensed.

The marking device **100** may detect, among other characteristics, the durability of marking substance **134**. Such durability may be evaluated by comparison with known criterion pertaining to location and environment of the intended use of marking device **100**. In the event that the durability of marking substance **134** is found to be inappropriate for the known criterion, a notification is generated for the user to replace marking dispenser **122**. In other embodiments, such notification may be sent to supervisory and other appropriate personnel through communication media such as e-mail, SMS, RSS, internet/intranet dashboards, and the like.

Table 1 below shows an example of reference spectral signature information that may be stored in storage device **154**. The information correlates specified marking substances **134** to predetermined spectral signatures.

TABLE 1

Marking Substance vs. Expected Spectral Signature					
Brand	Color	Durability	Approved Marking Use	Optical Sensor Reading	Spectral Signature
None	Clear	N/A	N/A	0.0	0000
Brand #1	Yellow	High	Gas	2.0	0001
Brand #2	Yellow	High	Gas	4.0	0002
Brand #1	Yellow	Medium	Gas	6.0	0003
Brand #2	Yellow	Medium	Gas	8.0	0004
Brand #1	Yellow	Low	Gas	10.0	0005
Brand #2	Yellow	Low	Gas	12.0	0006
Brand #1	Blue	High	Water	14.0	0007
Brand #2	Blue	High	Water	16.0	0008

TABLE 1-continued

Marking Substance vs. Expected Spectral Signature					
Brand	Color	Durability	Approved Marking Use	Optical Sensor Reading	Spectral Signature
Brand #1	Blue	Medium	Water	18.0	0009
Brand #2	Blue	Medium	Water	20.0	0010
Brand #1	Blue	Low	Water	22.0	0011
Brand #2	Blue	Low	Water	24.0	0012
Brand #1	Orange	High	Tel/CATV	26.0	0013
Brand #2	Orange	High	Tel/CATV	28.0	0014
Brand #1	Orange	Medium	Tel/CATV	30.0	0015
Brand #2	Orange	Medium	Tel/CATV	32.0	0016
Brand #1	Orange	Low	Tel/CATV	34.0	0017
Brand #2	Orange	Low	Tel/CATV	36.0	0018
Brand #1	Green	High	Sewer	38.0	0019
Brand #2	Green	High	Sewer	40.0	0020
Brand #1	Green	Medium	Sewer	42.0	0021
Brand #2	Green	Medium	Sewer	44.0	0022
Brand #1	Green	Low	Sewer	46.0	0023
Brand #2	Green	Low	Sewer	48.0	0024
Brand #1	Red	High	Power	50.0	0025
Brand #2	Red	High	Power	52.0	0026
Brand #1	Red	Medium	Power	54.0	0027
Brand #2	Red	Medium	Power	56.0	0028
Brand #1	Red	Low	Power	58.0	0029
Brand #2	Red	Low	Power	60.0	0030

Referring to Table 1, spectral signature 0000 is an entry that correlates to no marking substance 134 being dispensed from marking dispenser 122. By contrast, all other spectral signatures (e.g., 0001-0030) are spectral signatures of respective colors or types of marking substances 134. Spectral signature 0000 is useful to detect that a marking dispenser 122 is becoming empty or is malfunctioning during a marking operation. For example, processor 150 may detect that trigger 126 is being pulled and at the same time optical sensor 210 may detect a spectral signature that substantially matches spectral signature 0000. This indicates that marking dispenser 122 is becoming empty or substantially empty of marking substance 134, or is malfunctioning. When trigger 126 is not being pulled, the spectral data that is received from optical sensor 210 may be ignored.

An aspect of this embodiment is that optical sensor 210 may be used for: (1) detecting the characteristics of marking substance 134, and (2) detecting that marking dispenser 122 is becoming empty or substantially empty, or is malfunctioning.

In this embodiment, detection algorithm 156 may process and interpret spectral information that is received from optical sensor 210, and then generate an appropriate response, if any. Details of the operation of marking device 100 including optical sensor 210 are described with reference to FIG. 3.

Referring now to FIG. 3, a flow diagram of a method 300 is shown. The method uses marking device 100 which includes optical sensor 210 for identifying the composition and/or type of marking substance in the marking dispenser. Method 300 may include, but is not limited to, the following acts. Additionally, the acts of method 300 are not limited to the following order.

In act 312, processor 150, executing detection algorithm 156, senses that trigger 126 is being pulled by the user of marking device 100 and reads the measured spectral information (via optical sensor 210) of the marking substance 134 that is being dispensed from marking device 100.

In act 314, detection algorithm 156 determines whether marking dispenser 122 is empty or substantially empty. For example, detection algorithm 156 determines whether the information received from optical sensor 210 substantially

matches spectral signature 0000 of Table 1. If yes, method 300 proceeds to act 316. If no, method 300 proceeds to act 318.

In act 316, processor 150, executing detection algorithm 156, generates output information to the user of marking device 100 that marking dispenser 122 is becoming empty or is empty and performs any other desired tasks, such as, but not limited to, deactivating the trigger, transmitting a notification in real time to a remote server that marking dispenser 122 is becoming empty or is empty (i.e., a real-time alert to a supervisor that a user in the field may be spraying but no paint is being dispensed), and so on. For example, an OUT OF PAINT message may be displayed to the user via user interface 152 and trigger 126 may be deactivated, after which method 300 ends.

If the marking dispenser is not empty, method 300 proceeds to act 318, wherein detection algorithm 156 compares the measured spectral information received from optical sensor 210 (before or after preprocessing by processor 150) with the stored spectral signature information, for example, of Table 1. More specifically, detection algorithm 156 compares the measured spectral information received from optical sensor 210 with spectral signatures 0001 through n of Table 1 in order to determine a match. For example, a value of about 10 from optical sensor 210 corresponds to spectral signature 0005, a value of about 46 from optical sensor 210 corresponds to spectral signature 0023, a value of about 54 from optical sensor 210 corresponds to spectral signature 0027, and so on. Table 1 can be stored during execution of method 300 in a high speed memory associated with processor 150.

In act 320, based on the comparison of act 318, if a match is found between the measured spectral information from optical sensor 210 and at least one spectral signature of Table 1, method 300 proceeds to act 322. However, based on the comparison of act 318, if no match is found between the measured spectral information from optical sensor 210 and at least one spectral signature of Table 1, method 300 proceeds to act 324.

In act 322, processor 150, executing detection algorithm 156, generates output information to the user of marking device 100 indicating the characteristics of marking substance 134 that is installed in marking device 100. For example, if optical sensor 210 detects spectral information that substantially matches spectral signature 0009, the brand, color, durability, and approved usage that correlates with spectral signature 0009 (e.g., Brand #1, blue, medium durability, and water line) may be displayed to the user via user interface 152. Method 300 returns to act 312.

In act 324, processor 150, executing detection algorithm 156, generates output information to the user of marking device 100 that is based on non-matching of spectral information. For example, if optical sensor 210 detects spectral information that does not substantially match any spectral signature of Table 1, an UNKNOWN PAINT message may be displayed to the user via user interface 152 and, optionally, trigger 126 may be deactivated. Optionally, a notification may be transmitted to a remote server that the marking substance 134 in marking dispenser 122 does not match any expected spectral signatures (i.e., a real-time alert to a supervisor that a user in the field may be spraying an unknown marking substance), after which method 300 ends.

As described above, marker information may be provided to the user via user interface 152 in response to the measured spectral information. For example, the brand, color, durability and approved usage of the marking substance may be displayed to the user. The user can be prompted to verify that the detected characteristics of the marking substance are

appropriate for the marking operation being performed. If yes, the user can enable the marking operation to proceed. If not, the user may signal the marking device to wait while the marking dispenser is changed or other required actions are taken. The processor 150 may also provide an out-of-paint message or an unknown paint message, depending on the measured spectral information. In other embodiments, the marking operation may be controlled automatically in response to the measured spectral information. For example, further dispensing of the marking substance may be inhibited if the characteristics of the marking substance detected by optical sensor 210 do not match preprogrammed parameters of the marking operation, such as underground utility type. In further embodiments, the measured spectral information, before or after preprocessing by processor 150, may be stored in storage device 154 and/or transmitted to a remote device for offline processing.

The optical sensor 210 is described above as a spectrometer for detecting spectral characteristics of the marking substance. It will be understood that a variety of different optical sensing configurations can be utilized within the scope of the present invention. In the embodiment of FIG. 2, optical sensor 210 senses reflected light from marking substance 134. In some embodiments, a light source can be utilized to illuminate the marking substance 134. The light source may be positioned adjacent to optical sensor 210 to permit sensing of reflected light from marking substance 134. In other embodiments, the light source can be positioned on the opposite side of marking substance 134 from optical sensor 210, so that light emitted by the light source is transmitted through marking substance 134 and is sensed by optical sensor 210. The light source can have broad band or narrow band spectral characteristics. The light source can be a DC source or can be pulsed or otherwise modulated to improve detection capability. The optical sensor 210 itself can have broad band or narrow band characteristics. Furthermore, optical fibers can be used to carry light to and from marking substance 134. The characteristics of optical sensor 210 and other optical components depends on the characteristics of the marking substance 134 to be detected and the conditions under which the marking device will be used.

FIG. 4 is a schematic diagram of the lower end of marking device 100, including a detection mechanism in the form of an olfactory sensor 410. Olfactory sensor 410 has an input line 412 mounted near marking dispenser holder 118, so that one end of input line 412 is in close proximity to marking substance 134 as it is dispensed from spray nozzle 130 of marking dispenser 122.

Olfaction refers to the sense of smell, and an olfactory sensor is a device for mimicking human olfaction. An olfactory sensor may also be known as an electronic nose, e-nose, ENose, artificial nose, and so on. Input line 412 may be a hollow tube that is used to direct vapor emitted by marking substance 134 to the detection system of olfactory sensor 410. Guard 212 may be provided. In this embodiment, guard 212 may be designed as a wind guard to limit wind interference with olfactory sensing of marking substance 134.

The detection system of an olfactory sensor is the "reactive" portion of the instrument. When in contact with volatile compounds, the sensors react, which means they experience a change of electrical properties. Most olfactory sensors use sensor arrays that react to volatile compounds on contact. For example, the adsorption of volatile compounds on the sensor surface causes a physical change of the sensor. A specific response is recorded by the electronic interface thereof for transforming the physical change to an electrical signal. The more commonly used olfactory sensors include metal oxide

semiconductors (MOS), conducting polymers (CP), quartz crystal microbalance, surface acoustic wave (SAW), and field effect transistors (MOSFET). Commercially available low power, compact olfactory sensors may be suitable for use as olfactory sensor 410 of marking device 100. The signal provided by olfactory sensor 410 depends on the type of olfactory sensor used and may be a digital or analog signal. The output signal of olfactory sensor 410 may be utilized directly by processor 150 to determine the characteristics of marking substance 134 or may be preprocessed to simplify analysis. For example, processor 150 may convert the measured olfactory information to a numerical value for comparison with the values in Table 2 below.

In this embodiment, the olfactory signature of each of the possible colors, types, manufacturers, and so on of marking substances 134 are predetermined and stored, for example, in storage device 154. Optionally, certain unique fragrances may be added to the chemical formulations of each composition and/or type of marking substance 134 in order to provide a unique detectable scent for each different composition and/or type of marking substance 134.

In a learning mode, the olfactory sensor 410 may be used to measure the olfactory information of each composition and/or type of marking substance 134 of interest. The olfactory measurements of the different compositions and/or types of marking substances 134 may be stored in order to provide a set of reference olfactory signatures for later comparison with measured olfactory signatures. Then, the same olfactory sensor 410 is used to measure the olfactory signatures of marking substances dispensed by the marking device. In this approach, the effect of differences among olfactory sensors 410 is eliminated. In another approach, olfactory signatures are measured by a reference olfactory sensor to provide reference olfactory signatures, and the reference olfactory signatures are provided, such as by downloading, to one or more marking devices. The detected olfactory signature of marking substance 134 is compared to the reference olfactory signatures to identify the marking substance 134 being dispensed.

Table 2 below shows an example of reference olfactory signature information that may be stored in storage device 154. The information correlates specified marking substances 134 to predetermined olfactory signatures.

TABLE 2

Marking Substance vs. Expected Olfactory Signature					
Brand	Color	Durability	Approved Making Use	Olfactory Sensor Reading	Olfactory Signature
None	Clear	N/A	N/A	0.0	0000
Brand #1	Yellow	High	Gas	2.0	0001
Brand #2	Yellow	High	Gas	4.0	0002
Brand #1	Yellow	Medium	Gas	6.0	0003
Brand #2	Yellow	Medium	Gas	8.0	0004
Brand #1	Yellow	Low	Gas	10.0	0005
Brand #2	Yellow	Low	Gas	12.0	0006
Brand #1	Blue	High	Water	14.0	0007
Brand #2	Blue	High	Water	16.0	0008
Brand #1	Blue	Medium	Water	18.0	0009
Brand #2	Blue	Medium	Water	20.0	0010
Brand #1	Blue	Low	Water	22.0	0011
Brand #2	Blue	Low	Water	24.0	0012
Brand #1	Orange	High	Tel/CATV	26.0	0013
Brand #2	Orange	High	Tel/CATV	28.0	0014
Brand #1	Orange	Medium	Tel/CATV	30.0	0015
Brand #2	Orange	Medium	Tel/CATV	32.0	0016
Brand #1	Orange	Low	Tel/CATV	34.0	0017
Brand #2	Orange	Low	Tel/CATV	36.0	0018
Brand #1	Green	High	Sewer	38.0	0019

TABLE 2-continued

Marking Substance vs. Expected Olfactory Signature					
Brand	Color	Durability	Approved Making Use	Olfactory Sensor Reading	Olfactory Signature
Brand #2	Green	High	Sewer	40.0	0020
Brand #1	Green	Medium	Sewer	42.0	0021
Brand #2	Green	Medium	Sewer	44.0	0022
Brand #1	Green	Low	Sewer	46.0	0023
Brand #2	Green	Low	Sewer	48.0	0024
Brand #1	Red	High	Power	50.0	0025
Brand #2	Red	High	Power	52.0	0026
Brand #1	Red	Medium	Power	54.0	0027
Brand #2	Red	Medium	Power	56.0	0028
Brand #1	Red	Low	Power	58.0	0029
Brand #2	Red	Low	Power	60.0	0030

Referring to Table 2, olfactory signature 0000 is an entry that correlates to no marking substance **134** being dispensed from marking dispenser **122**. By contrast, all other olfactory signatures (e.g., 0001-0030) are olfactory signatures of respective colors or types of marking substances **134**. Olfactory signature 0000 is useful to detect when a marking dispenser **122** is becoming empty or is malfunctioning during a marking operation. For example, processor **150** may detect that trigger **126** is being pulled and at the same time, olfactory sensor **410** may detect an olfactory signature that substantially matches olfactory signature 0000. This indicates that marking dispenser **122** is becoming empty or substantially empty of marking substance **134**, or is malfunctioning. When trigger **126** is not being pulled, the olfactory data that is returned from olfactory sensor **410** may be ignored.

An aspect of this embodiment is that olfactory sensor **410** may be used for: (1) detecting the characteristics of marking substance **134**, and (2) detecting when marker dispenser **122** is becoming empty or substantially empty, or is malfunctioning.

In this embodiment, detection algorithm **156** may process and interpret olfactory information that is received from olfactory sensor **410** and then generate an appropriate response, if any. Details of the operation of marking device **100** including olfactory sensor **410** are described with reference to FIG. 5.

Referring now to FIG. 5, a flow diagram of a method **500** is shown. The method uses marking device **100** which includes olfactory sensor **410** for identifying the composition and/or type of marking substance in the marking dispenser. Method **500** may include, but is not limited to, the following acts. Additionally, the acts of method **500** are not limited to the following order.

In act **512**, processor **150**, executing detection algorithm **156**, senses that trigger **126** is being pulled by the user of marking device **100** and reads the measured olfactory information (via olfactory sensor **410**) of the marking substance **134** that is being dispensed from marking device **100**.

In act **514**, detection algorithm **156** determines whether marking dispenser **122** is becoming empty or substantially empty. For example, detection algorithm **156** determines whether the information received from olfactory sensor **410** substantially matches olfactory signature 0000 of Table 2. If yes, method **500** proceeds to act **516**. If no, method **500** proceeds to act **518**.

In act **516**, processor **150**, executing detection algorithm **156**, generates output information to the user of marking device **100** that marking dispenser **122** is becoming empty or is empty and performs any other desired tasks, such as, but not limited to, deactivating the trigger, transmitting a notification

in real time to a remote server that marking dispenser **122** is becoming empty or is empty (i.e., a real-time alert to a supervisor that a user in the field may be spraying but no paint is being dispensed), and so on. For example, an OUT OF PAINT message may be displayed to the user via user interface **152** and trigger **126** may be deactivated, after which method **500** ends.

If the marking dispenser is not empty, method **500** proceeds to act **518**, wherein detection algorithm **156** compares the measured olfactory information received from olfactory sensor **410** (before or after preprocessing by processor **150**) with the stored olfactory signature information, for example, of Table 2. More specifically, detection algorithm **156** compares the measured olfactory information received from olfactory sensor **410** with olfactory signatures 0001 through n of Table 2 in order to determine a match. For example, a value of about 4 from olfactory sensor **410** corresponds to olfactory signature 0002, a value of about 22 from olfactory sensor **410** corresponds to olfactory signature 0011, a value of about 60 from olfactory sensor **410** corresponds to olfactory signature 0030, and so on. Table 2 can be stored during execution of method **500** in a high speed memory associated with processor **150**.

In act **520**, based on the comparison of act **518**, if a match is found between the measured olfactory information from olfactory sensor **410** and at least one olfactory signature of Table 2, method **500** proceeds to act **522**. However, based on the comparison of act **518**, if no match is found between the measured olfactory information from olfactory sensor **410** and at least one olfactory signature of Table 2, method **500** proceeds to act **524**.

In act **522**, processor **150**, executing detection algorithm **156**, generates output information to the user of marking device **100** indicating the characteristics of marking substance **134** that is installed in marking device **100**. For example, if olfactory sensor **410** returns olfactory information that substantially matches olfactory signature 0009, the brand, color, durability, and approved usage that correlates with olfactory signature 0009 (e.g., Brand #1, blue, medium durability, and water line) may be displayed to the user via user interface **152**. Method **500** returns to act **512**.

In act **524**, processor **150**, executing detection algorithm **156**, generates output information to the user of marking device **100** that is based on non-matching of olfactory information. For example, if olfactory sensor **410** detects olfactory information that does not substantially match any olfactory signature of Table 2, an UNKNOWN PAINT message may be displayed to the user via user interface **152** and, optionally, trigger **126** may be deactivated. Optionally, a notification may be transmitted to a remote server that the marking substance **134** in marking dispenser **122** does not match any expected spectral signatures (i.e., a real-time alert to a supervisor that a user in the field may be spraying an unknown marking substance), after which method **500** ends.

FIG. 6 is a flow diagram of a method **600** of operating marking device **100**. The method **600** is described with reference to the marking device **100** shown in FIG. 1 and described above. The method uses one or more of the detection mechanisms described herein in a system for processing marking substance information. By way of example, method **600** is an example of using optical sensor **210** of FIG. 2 in one or more marking devices **100** in a system for processing marking substance information. Alternatively, method **600** may be modified for marking devices **100** that include olfactory sensors **410** of FIG. 4. Method **600** may include, but is not limited to, the following acts.

In act **610**, marking dispenser **122** is installed by the user in the marking device **100**. By way of example, marking dispenser **122** may be an aerosol can containing a marking paint. Marking device **100** may include an optical sensor **210**. Optical sensor **210** may be used to identify the color or any other characteristic of the marking substance **134** by comparing detected spectral information with reference spectral signatures of marking substances **134**. In one example, optical sensor **210** is installed in a marking device, such as the marking devices that are described in the U.S. patent application Ser. No. 11/696,606 and U.S. patent application Ser. No. 11/685,602.

In act **612**, the trigger **126** of the marking device **100** is pulled or otherwise activated by the user in order to dispense a quantity of marking substance **134** from the marking dispenser **122** onto the ground. The processor **150** receives an indication that the marking dispenser **122** has been activated to dispense the marking substance **134**.

In act **614**, processor **150** instructs detection mechanism **140** to detect one or more characteristics of marking substance **134**. For example, processor **150** may issue a command to detection mechanism **140** to detect marking substance **134** in response to the user activating the trigger **126**. In one example, optical sensor **210** may be used to detect the color and/or any other characteristic of marking substance **134**. In another example, olfactory sensor **410** may be used to detect the color and/or any other characteristic of marking substance **134**. The detector information acquired by detection mechanism **140** is supplied by detection mechanism **140** to processor **150**.

In the embodiment where optical sensor **210** is used, spectral information of marking substance **134** is supplied by optical sensor **210** to processor **150**. For example, the action of pulling trigger **126** of marking device **100** to dispense marking substance **134** onto the ground may initiate optical sensor **210**. Optical sensor **210** measures the spectral characteristics of marking substance **134** that is dispensed from marking dispenser **122**. Processor **150**, executing detection algorithm **156**, processes the detector information received from optical sensor **210** to determine the color or any other characteristic of marking substance **134**. For example and referring to Table 1, a value of about 8 from optical sensor **210** corresponds to optical signature 0004, a value of about 18 from optical sensor **210** corresponds to optical signature 0009, a value of about 52 from optical sensor **210** corresponds to optical signature 0026, and so on. Subsequently, processor **150**, executing detection algorithm **156**, generates output information to the user of marking device **100** indicating the type of marking substance **134** in marking dispenser **122**. For example, if optical sensor **210** detects spectral information that substantially matches spectral signature 0009 of Table 1, the brand, color, durability, and approved usage that correlates with spectral signature 0009 (e.g., Brand #1, blue, medium durability, and water line) may be displayed to the user via user interface **152**. In this way, the user may verify immediately that the intended marking substance **134** (e.g., intended color or any other attribute) has been installed in marking device **100**.

In act **616**, processor **150** performs initial processing of the detector information received from detection mechanism **140** to provide one or more marking substance characteristics. By way of example only, spectral information provided by optical sensor **210** may be processed to determine the color of the marking substance being dispensed by marking dispenser **122**. The marking substance characteristics may be compared with reference information as described above to identify the marking substance **134**. In other embodiments, the detector

information received from detection mechanism **140** includes marking substance characteristics and can be compared directly with the reference information. Thus, the detector information received from detection mechanism **140** may include information which requires initial processing by processor **150** to provide marking substance characteristics and/or may include marking substance information without initial processing.

In block **618**, acts involving utilization of the detector information and/or the marking substance characteristics are shown. As used herein, "marker information" includes detector information and/or marking substance characteristics, or a selected subset of such information. The acts shown in block **518** may be performed separately or in any combination. The acts of block **518** may be performed or not performed, depending on the operating state and the application of marking device **100**. Also, additional acts may involve the marker information.

In act **618.1**, the marker information is stored locally in storage device **154** of marking device **100**. The marker information can be stored separately or with other data in an electronic record of a marking operation or of operation of the marking device. The stored information, or a selected subset thereof, can be processed locally and/or transmitted to a remote device for processing, can be displayed on a display device and/or an indicator, and/or can be used for real-time control of the marking device, for example.

In act **618.2**, the marker information is transmitted by communications interface **158** to a remote device. Examples of the remote device include, for example, a computer located in the vehicle of the user or a remote server, or both. Communications interface **158** may utilize wireless communication and/or a wired connection for transmission of the marker information. In one example of a wired connection, when the user returns to his/her home base, the marking device may be connected by a wired connection to a central computing device. In particular, the marking device may be coupled to a docking station (not shown) that is designed to connect with the communications interface **158**. The marker information that is stored locally within storage device **154** may be transmitted to the central computing device.

In act **618.3**, the marker information may be displayed to the user, for example, on a display screen and/or by indicators. The marker information may be for information only or may require user action, such as verifying that the marking dispenser is appropriate for the intended application. The display of marker information provides feedback to the user and permits verification that the intended marking dispenser **122** has been installed.

In act **618.4**, the marker information is used for real time control of the marking device **100**. Thus, for example, selected marker information may be compared with reference information, for example, entered by the user or downloaded to marking device **100**. In the absence of a match, dispensing of the marking substance **134** from marking dispenser **122** may be inhibited automatically. Other real-time control applications are included within the scope of the invention.

In act **620**, a determination is made by processor **150** as to whether the marking operation is complete. For example, the user may indicate that it is necessary to install another marking dispenser of the same color in order to complete the marking operation or may indicate that another facility is to be marked at the same site, thus requiring installation of a marking dispenser of a different color. When the marking operation is not complete, the process returns to act **610**.

When the marking operation is complete, as determined in act **620**, the marker information which has been stored in

storage device 154 and/or transmitted to a remote device is ready for offline processing. By way of example only, offline processing may include compilation of data for a particular job site and/or determination of trends and statistics for multiple users. In another example, marker information may be processed for the purpose of tracking the inventory of marking dispensers 122. More specifically, marker information may be processed in order to analyze the usage of marking dispensers 122, such as, but not limited to, the number of dispensers used and by which users. In a further example, the marker information may be processed for the purpose of quality control, such as to verify that the proper marking substances have been used in the assigned marking operations. The marker information is not limited to the uses mentioned above. The marker information may be used for any purpose (e.g., real-time product verification, tracking which user-location received which batch of marking paint, tracking marking paint inventory, tracking marking paint problems, tracking marking paint usage, and so on).

FIG. 7 is a schematic diagram of the lower end of marking device 100, including a detection mechanism in the form of a weight sensor 710. Weight sensor 710 may be coupled, for example, to the end of marking dispenser holder 118 that is opposite spray nozzle 130 of marking dispenser 122, as shown in FIG. 7. Weight sensor 710 may be, for example, any commercially available weight sensing device, such as any low power, compact load cell device.

Weight sensor 710 may be mechanically coupled to marking dispenser 122 such that marking dispenser 122 hangs freely therefrom. In one example, weight sensor 710 may be coupled to the lip of marking dispenser 122 via a spring 712 and a hook 714 arrangement, such as shown in FIG. 7. Depending on the amount of marking substance 134 in marking dispenser 122, marking dispenser 122 presents a variable load (as marking substance 134 is dispensed) that may be measured by weight sensor 710. The coupling of weight sensor 710 to marking dispenser 122 is not limited to the arrangement shown in FIG. 7, and any coupling mechanism that allows the variable load to be sensed by weight sensor 710 is acceptable.

In this embodiment, weight sensor 710 may be calibrated for both the full and empty (or substantially empty) weight of marking dispenser 122 in order to allow detection algorithm 156 to correlate the weight of marking dispenser 122 to the amount of marking substance 134 in marking dispenser 122. The relationship between the measured amount of marking substance 134 in marking dispenser 122 and the estimated marking distance may be predetermined. Therefore, the weight of marking dispenser 122 may be further correlated to an estimated marking distance which the measured amount of marking substance 134 is capable of marking.

Table 3 below shows an example of reference weight information that may be stored in storage device 154. The information correlates weight to percent (%) full and estimated marking distance. This correlation may be stored as predetermined weight signatures.

TABLE 3

Marking Substance vs. Expected Weight Signature			
Weight in ounces	% Full	Marking Distance in Feet	Weight Signature
0	0	0	0000
1	0	0	0000
2	0	0	0000
3	5	50	0001

TABLE 3-continued

Marking Substance vs. Expected Weight Signature			
Weight in ounces	% Full	Marking Distance in Feet	Weight Signature
4	10	100	0002
5	15	150	0003
6	20	200	0004
7	25	250	0005
8	30	300	0006
9	35	350	0007
10	40	400	0008
11	45	450	0009
12	50	500	0010
13	55	550	0011
14	60	600	0012
15	65	650	0013
16	70	700	0014
17	75	750	0015
18	80	800	0016
19	85	850	0017
20	90	900	0018
21	95	950	0019
22	100	1000	0020

Referring to Table 3, weight signature 0000 is an entry that correlates to marking dispenser 122 being empty or substantially empty of marking substance 134. By contrast, all other weight signatures (e.g., 0001-0020) are weight signatures of marking dispenser 122 containing at least some usable quantity of marking substance 134. Based on Table 3, a message may be displayed to the user via user interface 152 as to the amount of marking substance 134 in marking dispenser 122 and/or the estimated marking distance capability of marking dispenser 122.

Weight signature 0000 is useful to detect that a marking dispenser 122 is becoming empty during a marking operation. For example, processor 150 may detect that trigger 126 is being pulled and at the same time weight sensor 710 may detect a weight signature that substantially matches weight signature 0000. This indicates that marking dispenser 122 is empty or substantially empty of marking substance 134. Because weight sensor 710 detects the weight of marking dispenser 122 rather than detecting the marking substance 134 being dispensed, the weight measurement can be performed any time that a marking dispenser 122 is installed in the marking device. For example, the weight can be measured when the marking substance 134 is being dispensed, upon installation of a marking dispenser in the marking device, upon power up of the marking device, or at any other time.

In this embodiment, detection algorithm 156 may process and interpret weight information received from weight sensor 710 and then generate an appropriate response, if any. When in use, the movement and/or changing angle of marking substance 134 within marking device 100 may cause readings from weight sensor 710 to vary. Consequently, it may be preferred to sample the output of weight sensor 710 and then process multiple load measurements in order to determine the weight of marking dispenser 122.

An aspect of this embodiment is that weight sensor 710 may be used for: (1) determining in advance of or during a marking operation the amount of marking substance 134 in marking dispenser 122, and (2) detecting that marking dispenser 122 is empty or substantially empty. By knowing in advance the amount of marking substance 134 in a full or partially full marking dispenser 122, a user may better select a marking dispenser 122 that is suited for the expected application. Additionally, the efficiencies that may be gained by

knowing in advance the amount of marking substance **134** in marking dispenser **122** may cause the users to be less wasteful with marking dispensers **122**.

Another aspect of this embodiment is that the user of marking device **100** may be able to estimate in advance the number of marking dispensers **122** required for a specified marking distance. For example, for a marking distance of 3500 feet, knowing in advance that one full marking dispenser **122** can mark about 1000 feet, the user may have at least four marking dispensers **122** available (including the marking dispenser **122** that may be already installed in marking device **100**) upon beginning the marking operation.

As shown in Table 3, the weight of the marking dispenser indicates the amount of marking substance remaining and also indicates the estimated marking distance available with the marking dispenser. In other embodiments, the estimated marking distance may be based on usage of the marking dispenser, as indicated, for example, by the distance already marked with the same marking dispenser or the time of actuation of the same marking dispenser.

In the embodiment described above, weight sensor **710** is used to determine the amount of marking substance in the marking dispenser by comparison of the detected weight with reference weight signatures. In another embodiment, weight sensor **710** can be used to determine if the marking dispenser **122** is empty or nearly empty by comparison of the detected weight with a threshold value that represents the weight of an empty or nearly empty marking dispenser. The result of the comparison can be used to indicate that marking dispenser **122** is empty or nearly empty.

Referring now to FIG. 8, a flow diagram of a method **800** is shown. The method uses marking device **100** which includes weight sensor **710** for determining the amount of marking substance in the marking dispenser. Method **800** may include, but is not limited to, the following acts. Additionally, the acts of method **800** are not limited to the following order.

In act **812**, processor **150**, executing detection algorithm **156**, reads the measured weight information (via weight sensor **710**) of marking dispenser **122** of marking device **100**.

In act **814**, processor **150**, executing detection algorithm **156**, determines whether marking dispenser **122** is empty or substantially empty. For example, detection algorithm **156** determines whether the information that is received from weight sensor **710** substantially matches weight signature **0000** of Table 3. If yes, method **800** proceeds to act **816**. If no, method **800** proceeds to act **818**.

In act **816**, processor **150**, executing detection algorithm **156**, generates output information to the user of marking device **100**. The output information indicates that marking dispenser **122** is empty or substantially empty. The processor **150** performs any other desired tasks, such as, but not limited to, deactivating the trigger, transmitting a notification in real time to a remote server that marking dispenser **122** is empty or substantially empty (i.e., a real-time alert to a supervisor that a user in the field may be spraying but no paint is being dispensed) and so on. For example, an OUT OF PAINT message may be displayed to the user via user interface **152** and trigger **126** may be deactivated, after which method **800** ends.

If the marking dispenser is not empty, method **800** proceeds to act **818**, wherein detection algorithm **156** compares in real time the measured weight information that is received from weight sensor **710** with the stored weight signature information, for example, of Table 3. More specifically, detection algorithm **156** compares the measured weight infor-

mation that is received from weight sensor **710** with, for example, weight signatures **0001** through **n** of Table 3 in order to determine a match.

In act **820**, processor **150** executing detection algorithm **156** generates output information to the user of marking device **100** indicating the characteristics of marking substance **134**. For example, if weight sensor **710** detects weight information that substantially matches weight signature **0009**, the percent (%) full and marking distance that correlates with weight signature **0009** (e.g., 45% and 450 feet) may be displayed to the user via user interface **152**. Method **800** returns to act **812**.

FIG. 9 is a schematic diagram of the lower end of marking device **100**, including a detection mechanism in the form of an out-of-paint sensor, such as a switch **910**. Switch **910** may be coupled, for example, to the end of marking dispenser holder **118** that is opposite spray nozzle **130** of marking dispenser **122**, as shown in FIG. 9. Switch **910** may be, for example, any commercially available switch device, such as a push-button toggle switch. In this example, the push-button of switch **910** is oriented in the direction of marking dispenser **122**.

Marking dispenser holder **118** may be mechanically coupled to marking dispenser **122** such that marking dispenser **122** hangs freely therefrom. In one example, marking dispenser holder **118** may be coupled to the lip of marking dispenser **122** via a spring **712** and a hook **714**. Depending on the amount of marking substance **134** in marking dispenser **122**, marking dispenser **122** presents a variable load (as marking substance **134** is dispensed) that is supported by spring **712** and hook **714**.

In this embodiment, the tension of spring **712** may be selected to provide a known travel between marking dispenser **122** being full and being empty or substantially empty. In particular, the tension of spring **712** may be selected such that when any usable quantity of marking substance **134** is present in marking dispenser **122**, the body of marking dispenser **122** is not in contact with switch **910** due to the weight of marking substance **134** pulling downward on spring **712**. By contrast, when marking dispenser **122** is empty or substantially empty of marking substance **134**, the body of marking dispenser **122** may come into contact with switch **910** because the weight of marking dispenser **122** is not sufficient to pull spring **712** downward and away from switch **910**. In this way, an out-of-paint sensor may be formed by use of switch **910**.

An aspect of this embodiment is that switch **910** may be used as an out-of-paint sensor for detecting that marking dispenser **122** is empty or substantially empty. In this embodiment, detection algorithm **156** may process and interpret the state of switch **910** in order to generate, for example, an OUT OF PAINT message which may be displayed to the user of marking device **100** via user interface **152**. Optionally, trigger **126** may be disabled in the event of an OUT OF PAINT condition.

It is contemplated that the detection mechanism **140** of marking device **100** and methods of the present invention may include optical sensor **210**, olfactory sensor **410**, weight sensor **710**, switch **910** (i.e., an out-of-paint sensor), and any combinations thereof. The detection mechanism **140** may directly detect the marking substance **134**, as in the case of optical sensor **210** and olfactory sensor **410**, or may indirectly detect marking substance **134**, as in the case of weight sensor **710** and switch **910**. Furthermore, the detections mechanism **140** of marking device **100** and methods of the present invention are not limited to optical sensors, olfactory sensors, weight sensors, and out-of-paint sensors. Other types of sensors may be used for identifying the composition and/or type

19

of marking substance and/or determining whether the paint dispenser is becoming empty. In one example of determining whether the paint dispenser is becoming empty, sound sensing devices may be used for detecting the sound of marking substance 134 being sprayed from marking dispenser 122. In addition, marking device 100 may include more than one detection mechanism of the same type or of different types. For example, marking device 100 may include two or more optical sensors or may include an optical sensor and a weight sensor.

Having thus described several aspects of at least one embodiment of this invention, it is to be appreciated various alterations, modifications, and improvements will readily occur to those skilled in the art. Such alterations, modifications, and improvements are intended to be part of this disclosure, and are intended to be within the spirit and scope of the invention. Accordingly, the foregoing description and drawings are by way of example only.

What is claimed is:

1. A marking apparatus to mark a presence or absence of an underground facility in a dig area, comprising:

a housing configured to enable dispensing of a marking substance onto the ground for marking the presence or absence of the underground facility in the dig area;

a marking dispenser holder affixed to the housing to hold at least one marking dispenser;

an actuator to cause dispensing of the marking substance from the at least one marking dispenser onto the ground in the dig area, in a marking operation, to mark the presence or absence of the underground facility;

at least one marking substance detection mechanism to detect one or more characteristics of the marking substance after the marking substance is dispensed from the at least one marking dispenser and to provide detector information representative of the one or more characteristics, wherein the at least one marking substance detection mechanism comprises at least one of an optical sensor, an olfactory sensor, a sound sensor, and a marking substance spectrum detection mechanism that operates by detecting a spectrum of the marking substance; and

a processing device to generate output information in response to the detector information, the output information representing the one or more characteristics of the marking substance.

2. A marking apparatus as defined in claim 1, wherein the at least one marking substance detection mechanism comprises the optical sensor.

3. A marking apparatus as defined in claim 1, wherein the at least one marking substance detection mechanism comprises the olfactory sensor.

4. A marking apparatus as defined in claim 1, wherein the at least one marking substance detection mechanism comprises the sound sensor.

5. A marking apparatus as defined in claim 1, wherein the at least one marking substance detection mechanism comprises a weight sensor to detect a weight of the marking substance in the at least one marking dispenser.

6. A marking apparatus as defined in claim 1, wherein the at least one marking substance detection mechanism comprises a switch sensor to detect that the at least one marking dispenser is empty or nearly empty.

7. A marking apparatus as defined in claim 1, wherein the at least one marking substance detection mechanism includes the marking substance spectrum detection mechanism.

20

8. A marking apparatus as defined in claim 1, wherein the processing device is configured to determine a marking substance type in response to the detector information.

9. A marking apparatus as defined in claim 1, wherein the processing device is configured to determine a marking substance color in response to the detector information.

10. A marking apparatus as defined in claim 1, wherein the processing device is configured to determine a marking substance durability in response to the detector information.

11. A marking apparatus as defined in claim 1, wherein the processing device is configured to determine a marking substance formulation in response to the detector information.

12. A marking apparatus as defined in claim 1, wherein the processing device is configured to compare information based on the detector information with reference information and to provide the output information based on a result of the comparison.

13. A marking apparatus as defined in claim 1, wherein the processing device is configured to analyze the detector information and to initiate an action based on a result of the analysis.

14. A marking apparatus as defined in claim 13, wherein the processing device is configured to display selected information based on the result of the analysis.

15. A marking apparatus as defined in claim 13, wherein the processing device is configured to send a notification based on the result of the analysis.

16. A marking apparatus as defined in claim 1, further comprising a user interface, wherein the processing device is configured to provide, to the user interface, selected information based on the detector information.

17. A marking apparatus as defined in claim 1, further comprising a display device, wherein the processing device is configured to display the output information on the display device.

18. A marking apparatus as defined in claim 1, further comprising a local memory, wherein the processing device is configured to store the output information in the local memory.

19. A marking apparatus as defined in claim 1, further comprising a communication system, wherein the processing device is configured to transmit the output information to a remote device using the communication system.

20. A marking apparatus as defined in claim 19, wherein the output information is transmitted to the remote device for review by a supervisor.

21. A marking apparatus as defined in claim 19, wherein the output information is transmitted to the remote device for processing.

22. A marking apparatus as defined in claim 1, wherein the marking substance spectrum detection mechanism is configured to detect a spectral signature of the marking substance.

23. A marking apparatus as defined in claim 1, wherein the at least one marking substance detection mechanism is configured to detect an olfactory signature of the marking substance.

24. A marking apparatus as defined in claim 1, configured to operate in a learning mode wherein the at least one marking substance detection mechanism detects one or more characteristics of a known marking substance and the processing device records the detector information in a table containing reference information.

25. A marking apparatus as defined in claim 1, wherein the processing device is configured to determine when the at least one marking dispenser is malfunctioning in response to the detector information.

26. A marking apparatus as defined in claim 5, wherein the processing device is configured to determine an amount of marking substance remaining in the at least one marking dispenser in response to the detected weight.

27. A marking apparatus as defined in claim 5, wherein the processing device is configured to determine when the at least one marking dispenser is empty or nearly empty, in response to the detected weight.

28. A marking apparatus as defined in claim 5, wherein the processing device is configured to determine an estimated marking distance available from the at least one marking dispenser in response to the detected weight.

29. A marking apparatus as defined in claim 1, wherein the processing device is configured to determine an estimated marking distance available from the at least one marking dispenser based on previous usage of the marking dispenser.

30. A marking apparatus as defined in claim 1, wherein the processing device is configured to compare information based on the detector information with reference information and to automatically inhibit dispensing of the marking substance in the absence of a match.

* * * * *

UNITED STATES PATENT AND TRADEMARK OFFICE
CERTIFICATE OF CORRECTION

PATENT NO. : 8,424,486 B2
APPLICATION NO. : 12/429947
DATED : April 23, 2013
INVENTOR(S) : Steven Nielsen et al.

Page 1 of 1

It is certified that error appears in the above-identified patent and that said Letters Patent is hereby corrected as shown below:

In the Claims:

Please replace column 20, line 65 with the following corrected version:

-- processing device is configured to determine when the at [[a]] least --

Signed and Sealed this
Sixteenth Day of July, 2013



Teresa Stanek Rea
Acting Director of the United States Patent and Trademark Office