



US008549084B2

(12) **United States Patent**
Nielsen et al.

(10) **Patent No.:** **US 8,549,084 B2**
(45) **Date of Patent:** **Oct. 1, 2013**

(54) **METHODS, APPARATUS, AND SYSTEMS FOR EXCHANGING INFORMATION BETWEEN EXCAVATORS AND OTHER ENTITIES ASSOCIATED WITH UNDERGROUND FACILITY LOCATE AND MARKING OPERATIONS**

701/213, 223, 300; 702/5; 715/771; 324/67; 342/22

See application file for complete search history.

(56) **References Cited**

U.S. PATENT DOCUMENTS

4,600,356 A 7/1986 Bridges
5,825,660 A 10/1998 Cagan et al.

(Continued)

FOREIGN PATENT DOCUMENTS

CA 2691780 5/2010
EP 1726722 A1 11/2006

OTHER PUBLICATIONS

CGA, Common Ground Alliance, Best Practices, Version 1.0, Apr. 2003, 93 pages.

(Continued)

Primary Examiner — Ramy M Osman

(57) **ABSTRACT**

Methods, apparatus, and systems for providing information regarding a locate and/or marking operation to identify a presence or an absence of at least one underground facility within a dig area. At least one notification indicating a status of the locate and/or marking operation is electronically transmitted and/or stored so as to inform at least one party associated with requesting the operation (a “requesting party,” e.g., an excavator, a property owner, a facility owner, a regulatory authority, a damage investigator, etc.) of the status of the operation. In one aspect, a requesting party may designate a preferred format, content, and/or method of receiving notifications regarding the locate and/or marking operation. In another aspect, a computer-generated GUI is provided to facilitate submission of requests, generation of “virtual white line” images to indicate one or more dig areas on a digital image of a work site, and/or selection of notifications and preferences for same. In yet another aspect, a requesting party may provide an acknowledgement of receipt (e.g., a “return receipt”) for one or more received notifications.

45 Claims, 10 Drawing Sheets

(75) Inventors: **Steven Nielsen**, North Palm Beach, FL (US); **Curtis Chambers**, Palm Beach Gardens, FL (US); **Jeffrey Farr**, Jupiter, FL (US)

(73) Assignee: **CertusView Technologies, LLC**, Palm Beach Gardens, FL (US)

(*) Notice: Subject to any disclaimer, the term of this patent is extended or adjusted under 35 U.S.C. 154(b) by 335 days.

(21) Appl. No.: **12/703,313**

(22) Filed: **Feb. 10, 2010**

(65) **Prior Publication Data**

US 2010/0205264 A1 Aug. 12, 2010

Related U.S. Application Data

(60) Provisional application No. 61/151,419, filed on Feb. 10, 2009, provisional application No. 61/151,425, filed on Feb. 10, 2009.

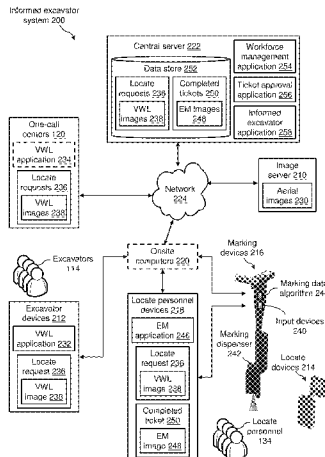
(30) **Foreign Application Priority Data**

Feb. 9, 2010 (CA) 2690239

(51) **Int. Cl.**
G06F 15/16 (2006.01)

(52) **U.S. Cl.**
USPC **709/206; 709/203; 709/207; 709/223; 324/67; 342/22**

(58) **Field of Classification Search**
USPC 709/206, 207, 223, 224, 203, 217;



(56)

References Cited

U.S. PATENT DOCUMENTS

6,169,517	B1	1/2001	Eslambolchi et al.	2010/0006667	A1	1/2010	Nielsen et al.
6,345,281	B1	2/2002	Kardos et al.	2010/0010862	A1	1/2010	Nielsen et al.
6,421,725	B1	7/2002	Vermilyea et al.	2010/0010863	A1	1/2010	Nielsen et al.
6,430,562	B1	8/2002	Kardos et al.	2010/0010882	A1	1/2010	Nielsen et al.
6,430,604	B1*	8/2002	Ogle et al. 709/203	2010/0010883	A1	1/2010	Nielsen et al.
6,470,976	B2	10/2002	Alft	2010/0084532	A1	4/2010	Nielsen et al.
6,532,409	B1	3/2003	Fujishima	2010/0085054	A1	4/2010	Nielsen et al.
6,751,554	B1*	6/2004	Asher et al. 702/5	2010/0085185	A1	4/2010	Nielsen et al.
6,825,793	B2	11/2004	Taylor, Jr. et al.	2010/0085376	A1	4/2010	Nielsen et al.
6,850,161	B1	2/2005	Elliott et al.	2010/0085694	A1	4/2010	Nielsen et al.
6,958,690	B1*	10/2005	Asher et al. 702/5	2010/0085701	A1	4/2010	Nielsen et al.
6,981,001	B1	12/2005	Reddick et al.	2010/0086671	A1	4/2010	Nielsen et al.
6,999,021	B2	2/2006	Taylor, Jr.	2010/0086677	A1	4/2010	Nielsen et al.
7,113,124	B2	9/2006	Waite	2010/0088031	A1	4/2010	Nielsen et al.
7,117,445	B2*	10/2006	Berger 715/752	2010/0088032	A1	4/2010	Nielsen et al.
7,136,765	B2	11/2006	Maier et al.	2010/0088134	A1	4/2010	Nielsen et al.
7,281,263	B1	10/2007	LaMastres et al.	2010/0088135	A1	4/2010	Nielsen et al.
7,295,119	B2	11/2007	Rappaport et al.	2010/0088164	A1	4/2010	Nielsen et al.
7,400,976	B2	7/2008	Young et al.	2010/0090700	A1	4/2010	Nielsen et al.
7,579,960	B2	8/2009	Cheng et al.	2010/0090858	A1	4/2010	Nielsen et al.
7,605,590	B2	10/2009	Mulcahey	2010/0094553	A1	4/2010	Nielsen et al.
7,640,105	B2	12/2009	Nielsen et al.	2010/0109670	A1	5/2010	Arnaud
7,773,095	B1	8/2010	Badrak et al.	2010/0117654	A1	5/2010	Nielsen et al.
7,783,507	B2	8/2010	Schick	2010/0188088	A1	7/2010	Nielsen et al.
8,248,056	B1*	8/2012	Olsson et al. 324/67	2010/0188215	A1	7/2010	Nielsen et al.
8,311,765	B2	11/2012	Nielsen et al.	2010/0188216	A1	7/2010	Nielsen et al.
8,473,148	B2	6/2013	Nielsen et al.	2010/0188245	A1	7/2010	Nielsen et al.
8,480,332	B2	7/2013	Miller	2010/0188407	A1	7/2010	Nielsen et al.
2002/0046259	A1	4/2002	Glorikian	2010/0189312	A1	7/2010	Nielsen et al.
2002/0130806	A1*	9/2002	Taylor et al. 342/22	2010/0189887	A1	7/2010	Nielsen et al.
2003/0055666	A1	3/2003	Roddy	2010/0198663	A1	8/2010	Nielsen et al.
2004/0168358	A1	9/2004	Stump	2010/0201690	A1	8/2010	Nielsen et al.
2004/0225444	A1	11/2004	Young et al.	2010/0201706	A1	8/2010	Nielsen et al.
2005/0125389	A1	6/2005	Hazzard et al.	2010/0205031	A1	8/2010	Nielsen et al.
2005/0156776	A1*	7/2005	Waite 342/22	2010/0205032	A1	8/2010	Nielsen et al.
2006/0026020	A1	2/2006	Waite et al.	2010/0205195	A1	8/2010	Nielsen et al.
2006/0077095	A1*	4/2006	Tucker et al. 342/357.08	2010/0205536	A1	8/2010	Nielsen et al.
2006/0085396	A1	4/2006	Evans et al.	2010/0205554	A1	8/2010	Nielsen et al.
2006/0282280	A1	12/2006	Stotz et al.	2010/0205555	A1	8/2010	Nielsen et al.
2007/0010925	A1	1/2007	Yokoyama	2010/0228588	A1	9/2010	Nielsen et al.
2007/0100768	A1	5/2007	Boccon-Gibod et al.	2010/0245086	A1	9/2010	Nielsen et al.
2007/0106784	A1	5/2007	Dickman	2010/0247754	A1	9/2010	Nielsen et al.
2007/0219722	A1	9/2007	Sawyer, Jr.	2010/0253511	A1	10/2010	Nielsen et al.
2008/0021863	A1	1/2008	Evans et al.	2010/0253513	A1	10/2010	Nielsen et al.
2008/0133128	A1	6/2008	Koch	2010/0253514	A1	10/2010	Nielsen et al.
2008/0228294	A1	9/2008	Nielsen et al.	2010/0255182	A1	10/2010	Nielsen et al.
2008/0245299	A1	10/2008	Nielsen et al.	2010/0256825	A1	10/2010	Nielsen et al.
2008/0288267	A1*	11/2008	Asher et al. 705/1	2010/0256912	A1	10/2010	Nielsen et al.
2009/0013928	A1	1/2009	Nielsen et al.	2010/0256981	A1	10/2010	Nielsen et al.
2009/0201178	A1	8/2009	Nielsen et al.	2010/0257029	A1	10/2010	Nielsen et al.
2009/0201311	A1	8/2009	Nielsen et al.	2010/0257477	A1	10/2010	Nielsen et al.
2009/0202101	A1*	8/2009	Nielsen et al. 382/100	2010/0259381	A1	10/2010	Nielsen et al.
2009/0202110	A1	8/2009	Nielsen et al.	2010/0259414	A1	10/2010	Nielsen et al.
2009/0202111	A1	8/2009	Nielsen et al.	2010/0262470	A1	10/2010	Nielsen et al.
2009/0202112	A1	8/2009	Nielsen et al.	2010/0262670	A1	10/2010	Nielsen et al.
2009/0204238	A1	8/2009	Nielsen et al.	2010/0263591	A1	10/2010	Nielsen et al.
2009/0204466	A1	8/2009	Nielsen et al.	2010/0268786	A1	10/2010	Nielsen et al.
2009/0204614	A1	8/2009	Nielsen et al.	2010/0285211	A1	11/2010	Nielsen et al.
2009/0204625	A1	8/2009	Nielsen et al.	2010/0318401	A1	12/2010	Nielsen et al.
2009/0207019	A1	8/2009	Nielsen et al.	2010/0318402	A1	12/2010	Nielsen et al.
2009/0208642	A1	8/2009	Nielsen et al.	2010/0318465	A1	12/2010	Nielsen et al.
2009/0210098	A1	8/2009	Nielsen et al.	2010/0324967	A1	12/2010	Nielsen et al.
2009/0210284	A1	8/2009	Nielsen et al.	2011/0007076	A1	1/2011	Nielsen et al.
2009/0210285	A1	8/2009	Nielsen et al.	2011/0020776	A1	1/2011	Nielsen et al.
2009/0210297	A1	8/2009	Nielsen et al.	2011/0022433	A1	1/2011	Nielsen et al.
2009/0210298	A1	8/2009	Nielsen et al.	2011/0035245	A1	2/2011	Nielsen et al.
2009/0237408	A1	9/2009	Nielsen et al.	2011/0035251	A1	2/2011	Nielsen et al.
2009/0238414	A1	9/2009	Nielsen et al.	2011/0035252	A1	2/2011	Nielsen et al.
2009/0238415	A1	9/2009	Nielsen et al.	2011/0035260	A1	2/2011	Nielsen et al.
2009/0238416	A1	9/2009	Nielsen et al.	2011/0035324	A1	2/2011	Nielsen et al.
2009/0238417	A1	9/2009	Nielsen et al.	2011/0035328	A1	2/2011	Nielsen et al.
2009/0241045	A1	9/2009	Nielsen et al.	2011/0040589	A1	2/2011	Nielsen et al.
2009/0241046	A1	9/2009	Nielsen et al.	2011/0040590	A1	2/2011	Nielsen et al.
2009/0324815	A1	12/2009	Nielsen et al.	2011/0045175	A1	2/2011	Nielsen et al.
2009/0327024	A1	12/2009	Nielsen et al.	2011/0046993	A1	2/2011	Nielsen et al.
				2011/0046994	A1	2/2011	Nielsen et al.
				2011/0046999	A1	2/2011	Nielsen et al.
				2011/0060496	A1	3/2011	Nielsen et al.
				2011/0060549	A1	3/2011	Nielsen et al.

2011/0093162 A1 4/2011 Nielsen et al.
 2011/0093304 A1 4/2011 Nielsen et al.
 2011/0093306 A1 4/2011 Nielsen et al.
 2011/0095885 A9 4/2011 Nielsen et al.
 2011/0117272 A1 5/2011 Nielsen et al.
 2011/0131081 A1 6/2011 Nielsen et al.
 2011/0135163 A1 6/2011 Nielsen et al.
 2011/0137769 A1 6/2011 Nielsen et al.
 2011/0236588 A1 9/2011 Nielsen et al.
 2011/0249394 A1 10/2011 Nielsen et al.
 2011/0279229 A1 11/2011 Nielsen et al.
 2011/0279230 A1 11/2011 Nielsen et al.
 2011/0279476 A1 11/2011 Nielsen et al.
 2011/0282542 A9 11/2011 Nielsen et al.
 2011/0283217 A1 11/2011 Nielsen et al.
 2011/0285749 A1 11/2011 Nielsen et al.
 2012/0019380 A1 1/2012 Nielsen et al.
 2012/0036140 A1 2/2012 Nielsen et al.
 2012/0065924 A1 3/2012 Nielsen et al.
 2012/0065944 A1 3/2012 Nielsen et al.
 2012/0066137 A1 3/2012 Nielsen et al.
 2012/0066273 A1 3/2012 Nielsen et al.
 2012/0066506 A1 3/2012 Nielsen et al.
 2012/0069178 A1 3/2012 Nielsen et al.
 2012/0072035 A1 3/2012 Nielsen et al.
 2012/0083968 A1 4/2012 Greiner
 2012/0110019 A1 5/2012 Nielsen et al.
 2012/0113244 A1 5/2012 Nielsen et al.
 2012/0274476 A1 11/2012 Nielsen et al.
 2012/0328162 A1 12/2012 Nielsen et al.
 2012/0330849 A1 12/2012 Nielsen et al.
 2013/0002854 A1 1/2013 Nielsen et al.
 2013/0006718 A1 1/2013 Nielsen et al.
 2013/0044918 A1 2/2013 Nielsen et al.
 2013/0085670 A1 4/2013 Nielsen et al.
 2013/0101180 A1 4/2013 Nielsen et al.
 2013/0103318 A1 4/2013 Nielsen et al.
 2013/0116855 A1 5/2013 Nielsen et al.
 2013/0125042 A1 5/2013 Nielsen et al.
 2013/0135343 A1 5/2013 Nielsen et al.
 2013/0147637 A1 6/2013 Nielsen et al.
 2013/0162431 A1 6/2013 Nielsen et al.

OTHER PUBLICATIONS

CGA, Common Ground, Study of One-Call Systems and Damage Prevention Best Practices, Aug. 1999, 262 pages.
 Co-pending U.S. Appl. No. 12/703,322, filed Feb. 10, 2010.
 International Search Report and Written Opinion, Application Serial No. PCT/2010/00378, Apr. 20, 2010.
 U.S. Appl. No. 12/824,612, filed Jun. 28, 2010, Nielsen et al.
 U.S. Appl. No. 12/824,635, filed Jun. 28, 2010, Nielsen et al.
 U.S. Appl. No. 12/824,655, filed Jun. 28, 2010, Nielsen et al.
 U.S. Appl. No. 12/824,671, filed Jun. 28, 2010, Nielsen et al.
 U.S. Appl. No. 12/915,516, filed Oct. 29, 2010, Nielsen et al.
 U.S. Appl. No. 13/185,174, filed Jul. 18, 2011, Nielsen et al.
 International Search Report and Written Opinion, Application No. PCT/US2011/047805, Dec. 14, 2011.
 Office Action dated Jan. 12, 2012 from U.S. Appl. No. 12/364,369.
 Office Action dated Dec. 30, 2011 from U.S. Appl. No. 12/701,447.
 Doyle, K., UGI Utilities: Delivering enhanced service, Energy Digital, <http://www.energydigital.com/company-report/ugi-utilities-delivering-enhanced-service> (original publication date unknown), retrieved Aug. 1, 2011, 3 pages.
 Georgia UPC EDEN, Web Entry Instruction Manual, www.gaupc.org, Jan. 22, 2009, 60 pages.
 GPS Technology Enhancing Underground Utility Locating, Underground Construction Magazine, Apr. 7, 2010, 4 pages, <http://www.undergroundconstructionmagazine.com/print/1034?page=show>.
 Haas, J. et al., "Feed the FLAME—Utility Integrates Field Applications," GeoWorld, Mar. 2007, 5 pages, online: Systems Integration Articles/Enspira Solutions.
 InMaps Develops Critical Database Link to Keep UGI Automation on Track, Holderness, NH, Sep. 2006, <http://www.inmaps.com/InMaps-develops-critical-database-link-to-keep-ugi-automation-on-track>, 1 page.

International Search Report and Written Opinion, Application No. PCT/US2011/45203, Dec. 22, 2011.
 IRTH Internet Manual, Arizona Bluestake, Call Before you Dig, <http://www.azbluestake.com/main/download/IRTHNetFeatures.pdf>, (original publication date unknown), 47 pages.
 IRTH Internet Manual, Georgia Utilities Protection Center, Feb. 16, 2006, 20 pages.
 IRTH One Call Centers, Underground Utility Damage Prevention, Ticket Management, http://www.irth.com/SOLUTIONS/IRTH_ONE_CALL/index.aspx, printed Jun. 5, 2010 (original publication date unknown), 2 pages.
 NTDPC One-Call Mapping Notification Processes, <http://www.ntdpc.com/ntdpc/faces/ntscf.jsp>, (original publication date unknown), 12 pages.
 Office Action dated Jan. 19, 2012 from U.S. Appl. No. 12/824,671.
 Office Action dated Jul. 15, 2010 from Canadian Application No. 2,690,239.
 Office Action dated Oct. 11, 2011 from Canadian Application No. 2,690,239.
 Stahovich, David M. et al., "Automated and Integrated Call Before You Dig," Proceedings of GITA 2005, GITA's 18th Annual Conference, Mar. 6-9, 2005, Denver, CO, online: GIS for Oil & Gas Conference 2002 <<http://www.gisdevelopment.net/proceedings/gita/2005/papers/76.pdf>>.
 UGI Utilities Selects KEMA for FLAME Project Implementation, Burlington, Massachusetts, Electric Energy Publications, Inc., Feb. 10, 2004, http://www.eet-d.com/?page=show_news&id=17641,2 pages.
 UGI Utilities, Inc., FLAME Project White Paper, (original publication date unknown), 12 pages.
 Office Action dated Oct. 2, 2012 from Australian Patent Application No. 2010214044.
 Office Action dated Oct. 12, 2012 from U.S. Appl. No. 12/824,612.
 Office Action dated Oct. 15, 2012 from U.S. Appl. No. 12/703,322.
 Office Action dated Apr. 8, 2013 from Canadian Application No. 2,690,239.
 Office Action dated Mar. 26, 2013 from U.S. Appl. No. 12/824,655.
 Common Ground Alliance, Mar. 2008, "Best Practices Version 5.0", archived online: CGA | Best Practices 2008 <http://web.archive.org/web/20101009040317/http://www.commongroundalliance.com/Content/NavigationMenu/Best_Practices_2008/BP_5.0_March2008_Final.pdf> [Best Practices 5.0].
 Notice of Allowance dated Feb. 21, 2013 from U.S. Appl. No. 12/824,612.
 Supplemental Notice of Allowability from U.S. Appl. No. 12/824,612 dated Apr. 4, 2013.
 Office Action dated May 7, 2012 from U.S. Appl. No. 13/193,337.
 Office Action dated Jan. 31, 2012 from U.S. Appl. No. 12/703,322.
 Office Action dated Mar. 27, 2012 from U.S. Appl. No. 12/824,635.
 Notice of Allowance dated Jun. 25, 2012 from U.S. Appl. No. 12/824,671.
 Office Action dated Jul. 13, 2012 from Canadian Application No. 2,690,239.
 Office Action dated Aug. 23, 2012 from U.S. Appl. No. 12/824,635.
 Office Action dated Jan. 29, 2013 from U.S. Appl. No. 13/185,174.
 Office Action dated Dec. 19, 2012 from U.S. Appl. No. 12/915,516.
 Office Action dated Dec. 28, 2012 from U.S. Appl. No. 13/193,337.
 Notice of Allowance dated May 9, 2013 from U.S. Appl. No. 12/824,635.
 Notice of Allowance dated May 23, 2013 from U.S. Appl. No. 12/824,655.
 Notice of Allowability dated Jun. 6, 2013 from U.S. Appl. No. 12/824,635.
 Notice of Allowance dated Jun. 20, 2013 from U.S. Appl. No. 12/915,516.
 Office Action dated May 20, 2013 from U.S. Appl. No. 12/915,516.
 Supplemental Notice of Allowability dated May 20, 2013 from U.S. Appl. No. 12/824,612.

* cited by examiner

Communications
process flow 100

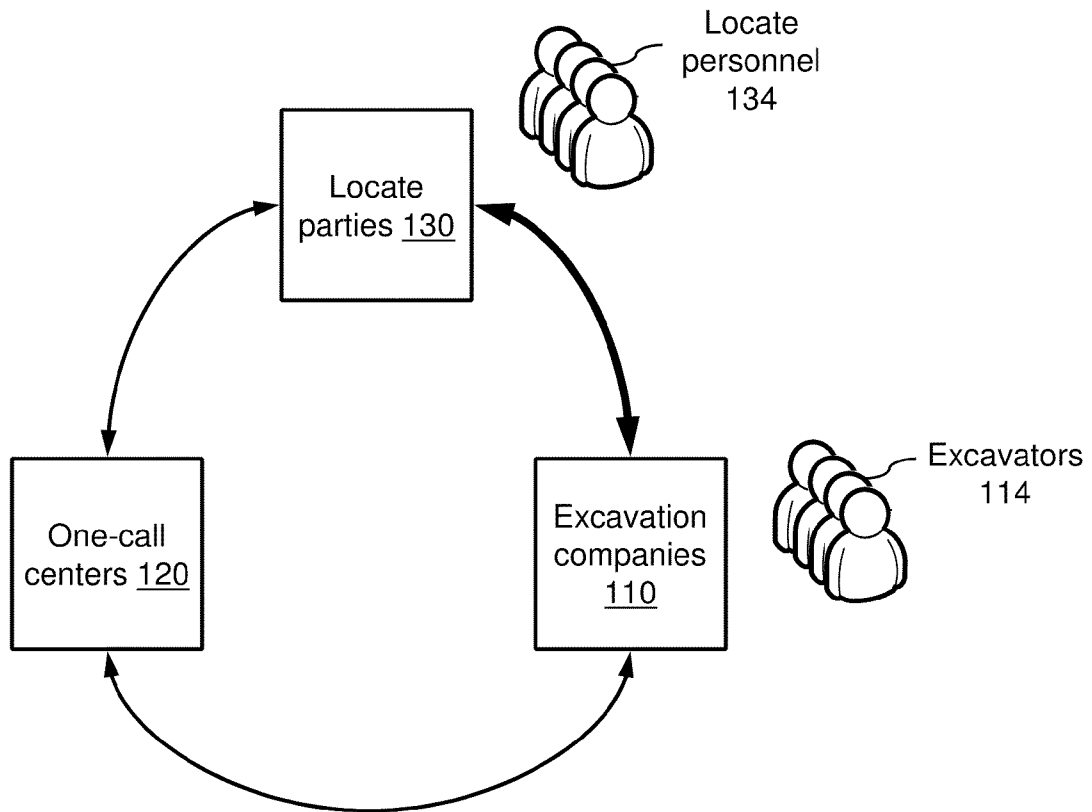


FIG. 1

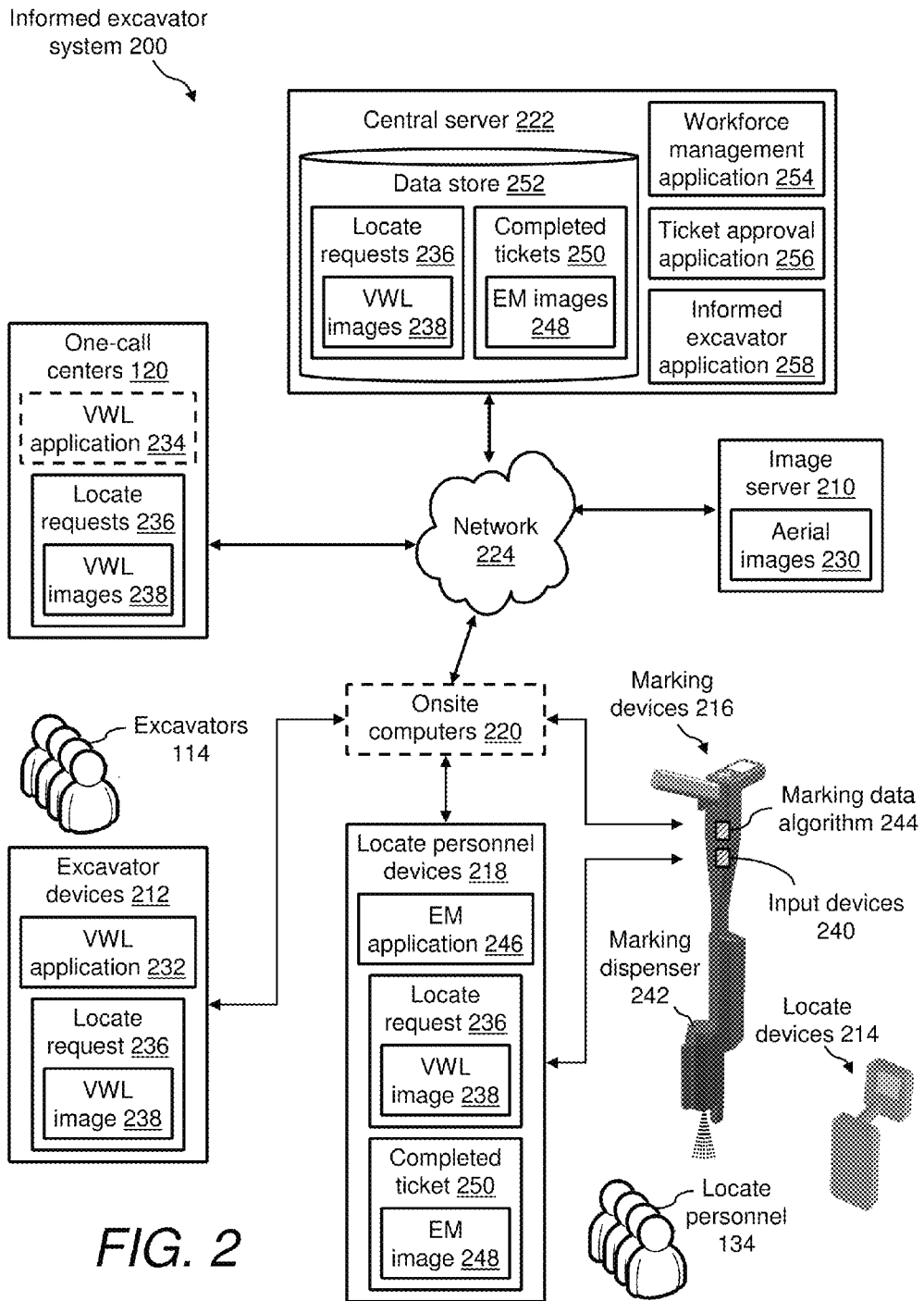


FIG. 2

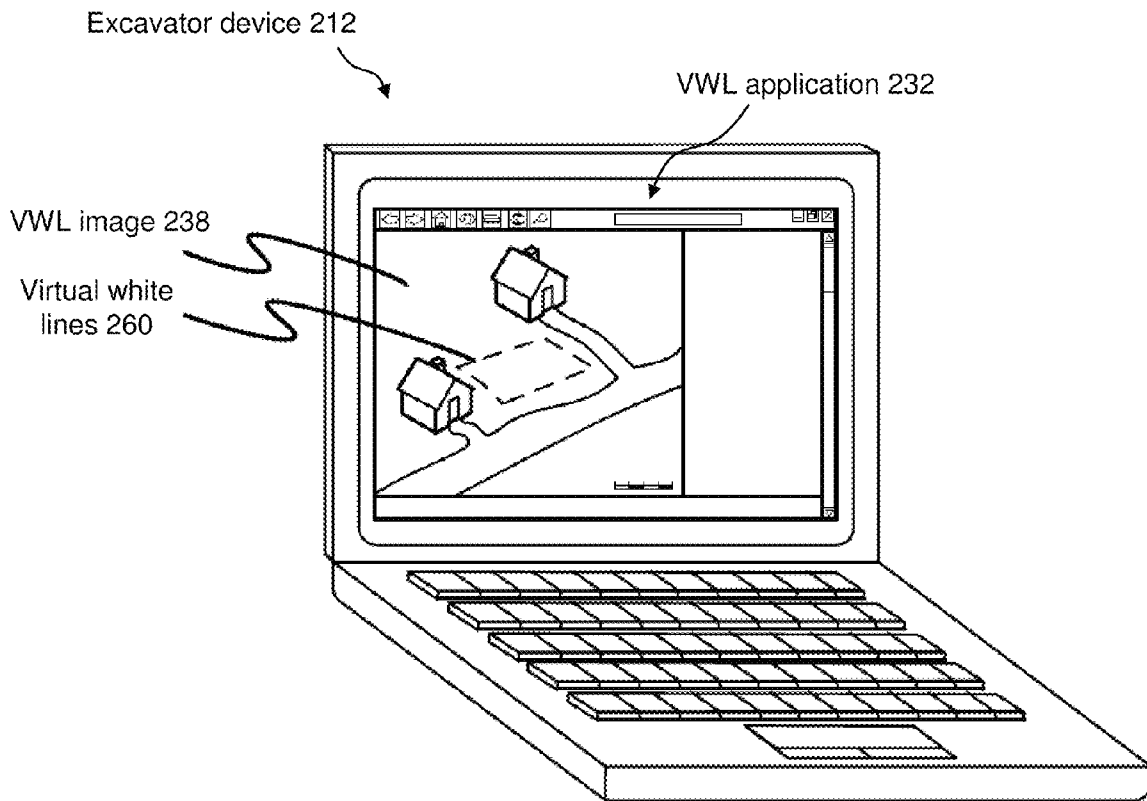


FIG. 3

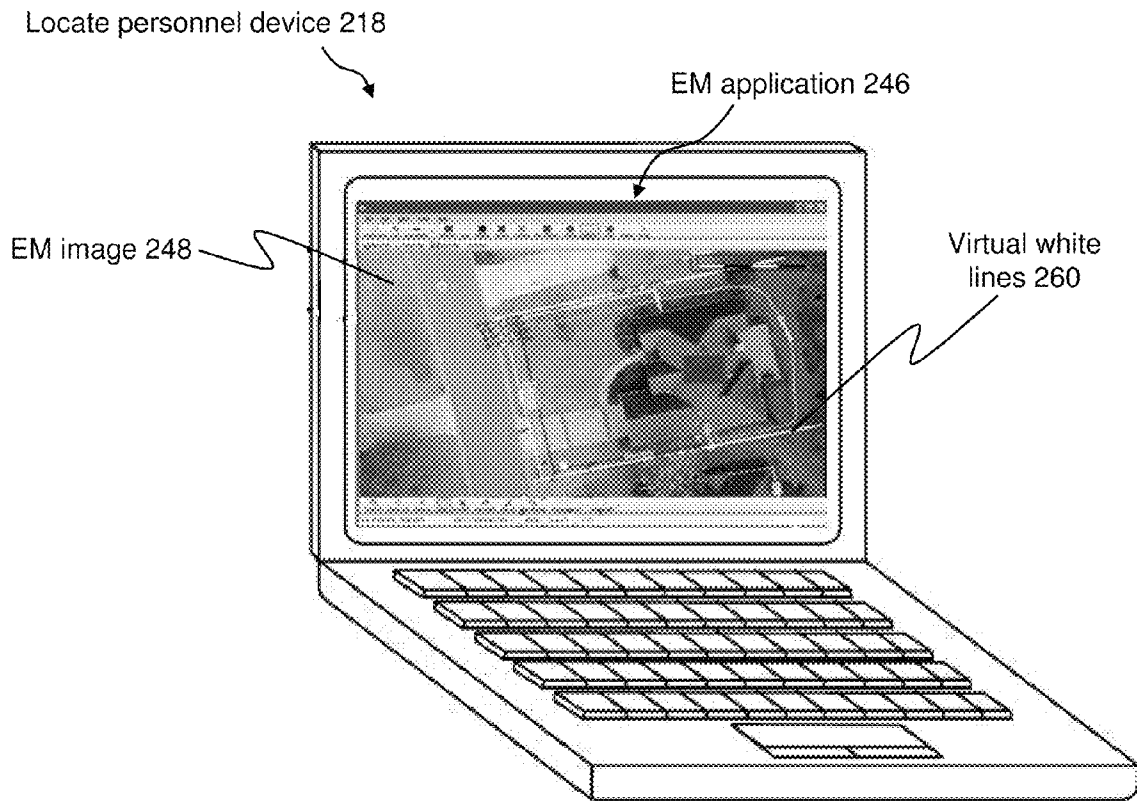


FIG. 4

Informed excavator
application 258

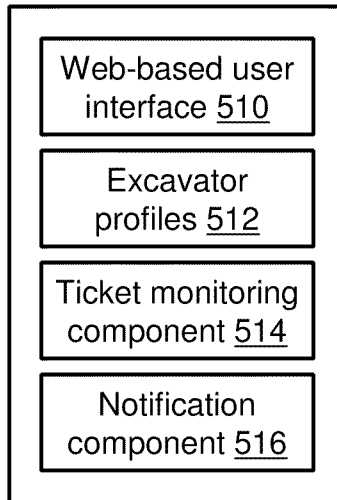


FIG. 5

Method 600

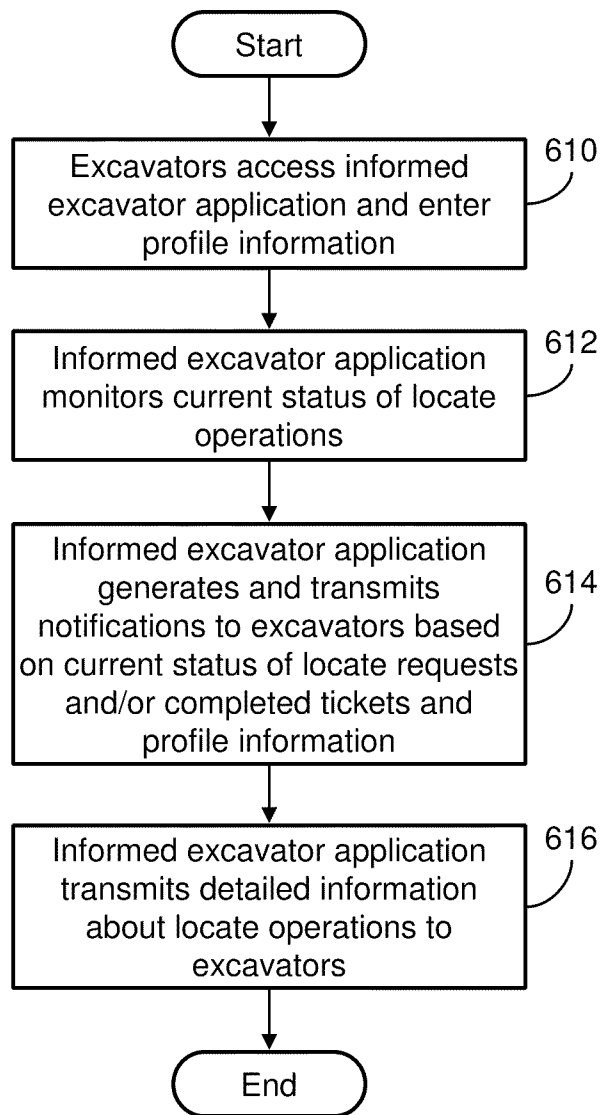


FIG. 6

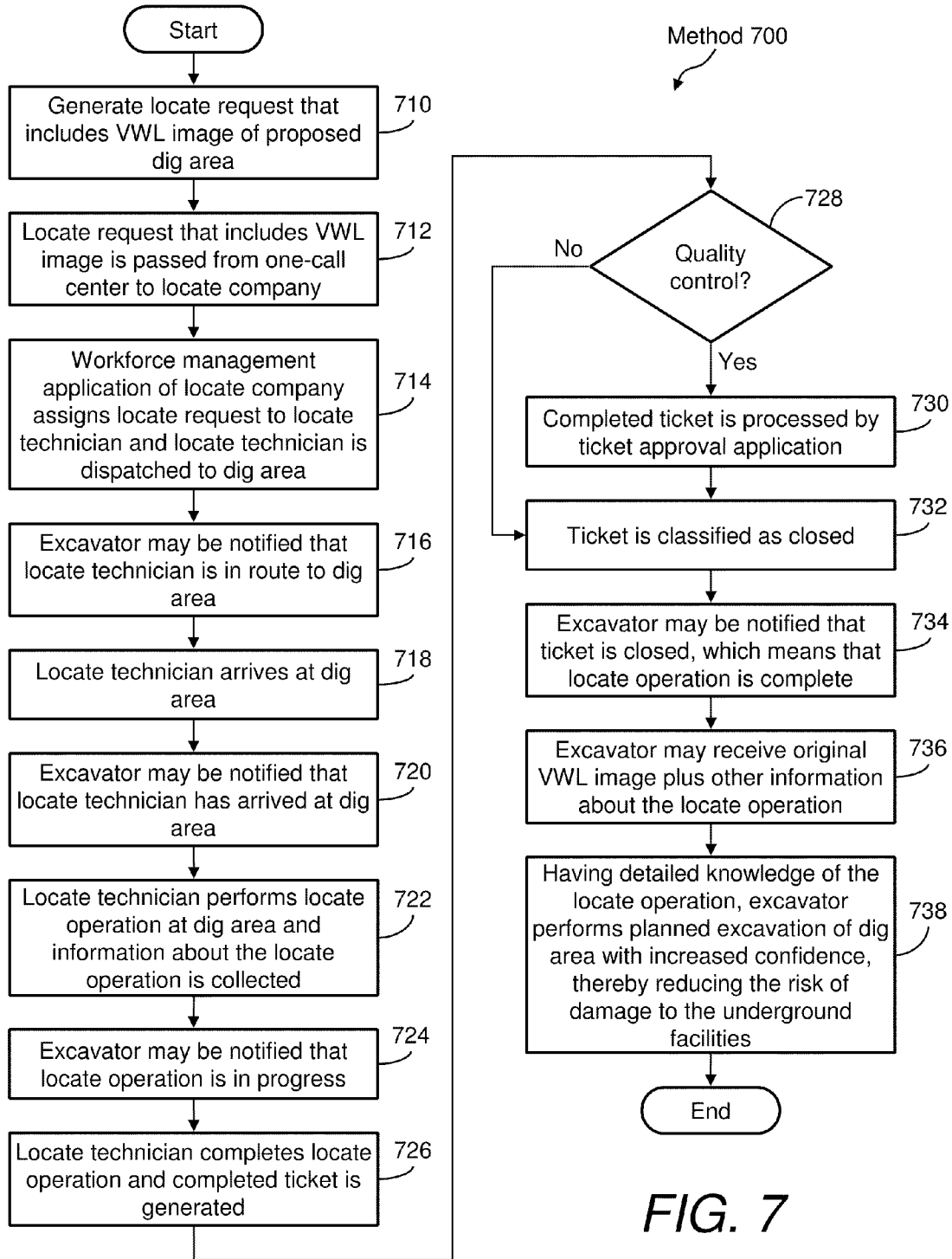


FIG. 7

Method 800

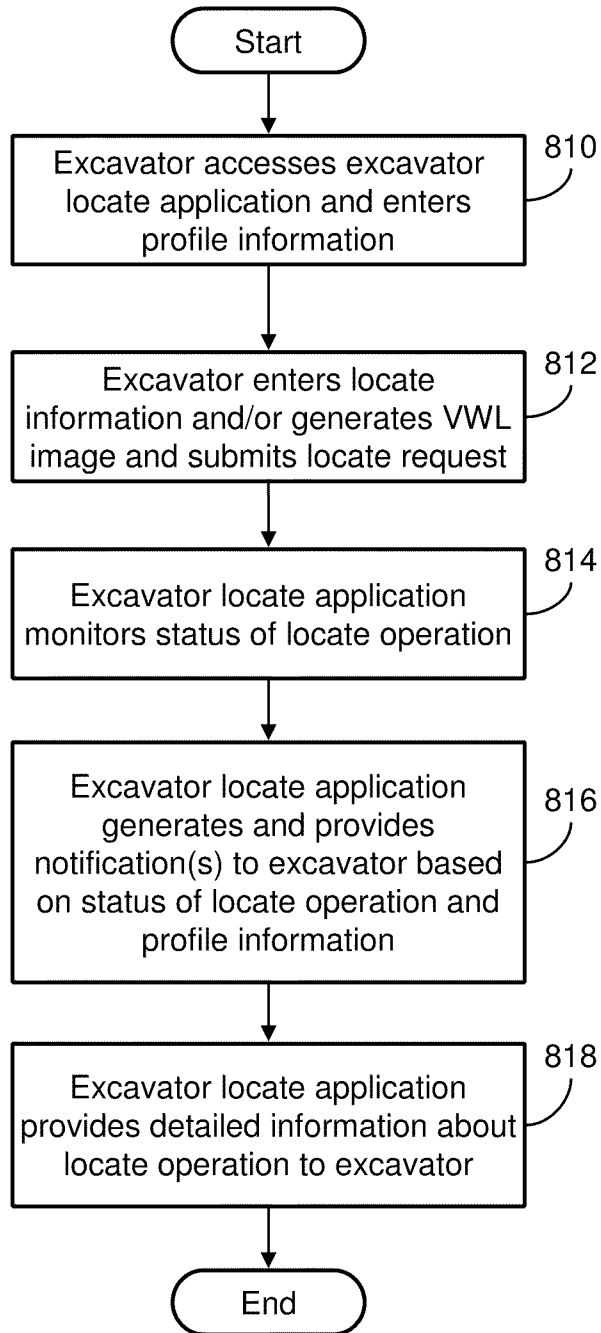


FIG. 8

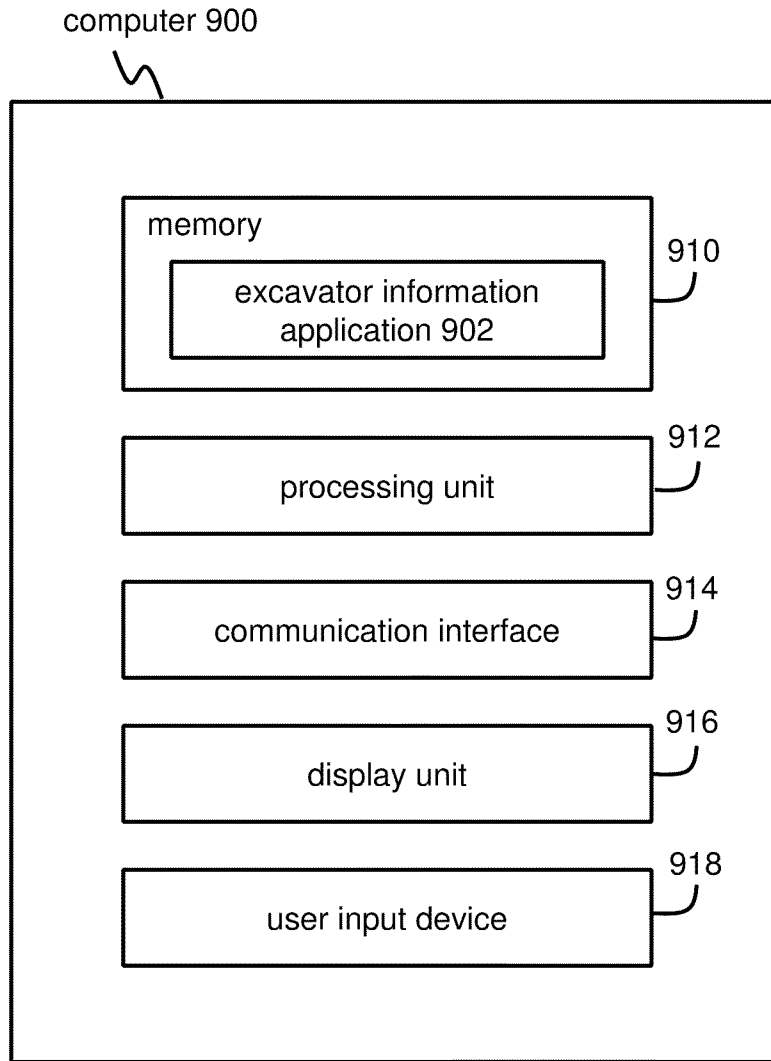


FIG. 9

1000

<p>1002</p> <p>Notification type</p>	<p>1004</p> <p>Notification communication method</p>
<p><input checked="" type="checkbox"/> Technician on-site</p>	<p><input type="checkbox"/> email</p>
<p><input type="checkbox"/> Ticket marked</p>	<p><input checked="" type="checkbox"/> Text message</p>
<p><input checked="" type="checkbox"/> Ticket approved</p>	<p><input type="checkbox"/> Phone call</p>
<p>⋮</p>	<p>⋮</p>
<p><input checked="" type="checkbox"/> Submit locate request and/or generate VWL image? 1006</p>	

FIG. 10

1

**METHODS, APPARATUS, AND SYSTEMS FOR
EXCHANGING INFORMATION BETWEEN
EXCAVATORS AND OTHER ENTITIES
ASSOCIATED WITH UNDERGROUND
FACILITY LOCATE AND MARKING
OPERATIONS**

**CROSS-REFERENCE TO RELATED
APPLICATIONS**

This application claims a priority benefit, under 35 U.S.C. §119(a), to Canadian application serial no. 2,690,239, entitled "Methods and Apparatus for Excavator Notification of Underground Facility Locate Operation Status," filed on Feb. 9, 2010.

This application claims a priority benefit, under 35 U.S.C. §119(e), to U.S. provisional patent application Ser. No. 61/151,419, entitled "Methods and Apparatus for Excavator Notification of Underground Facility Locate Operation Status," filed on Feb. 10, 2009.

This application also claims a priority benefit, under 35 U.S.C. §119(e), to U.S. provisional patent application No. 61/151,425, entitled "Methods and Apparatus for Exchanging Information Between Excavators and Other Entities Associated with Underground Facility Locate Operations," filed on Feb. 10, 2009.

Each of the above-identified applications is incorporated herein by reference.

BACKGROUND

Field service operations may be any operation in which companies dispatch technicians and/or other staff to perform certain activities, for example, installations, services and/or repairs. Field service operations may exist in various industries, examples of which include, but are not limited to, network installations, utility installations, security systems, construction, medical equipment, heating, ventilating and air conditioning (HVAC) and the like.

In the construction industry, for example, the process of locating and marking underground facilities is an example of a field service application, often referred to as a "locate and marking operation" (or more simply referred to as a "locate operation"). In locate operations, a locate technician may use one or more locate devices (e.g., a locate transmitter and a locate receiver) and a marking device in order to perform the locate operation. A locate receiver is an instrument for detecting the presence or absence of facilities that are concealed in some manner, such as cables and pipes that are located underground. A locate receiver is used to detect electromagnetic fields that are generated by a detection signal that is emitted from the facility (the detection signal typically is provided to the facility via a locate transmitter). A signal, or lack thereof, detected by the locate receiver indicates the presence or absence of the facility.

Once the presence or absence of the facility is detected, a marking material is dispensed on, for example, the surface of the ground at the location of the facility. Marking material may be any material, substance, compound, and/or element, used or which may be used separately or in combination to mark, signify, and/or indicate. Examples of marking materials may include, but are not limited to, paint, chalk, dye, and/or iron. Marking devices, such as paint marking wands and/or paint marking wheels, provide a convenient method of dispensing marking materials onto surfaces, such as onto the surface of the ground.

2

With respect to locate operations, there may be an associated work request (i.e., locate request, also referred to as locate request ticket or merely "ticket") that is originated by, for example, an excavator or other party who wishes to ascertain and/or mark the presence or absence of one or more underground facilities in a certain geographic region. A locate request may be any communication or instruction to perform a locate operation at a certain work site, or in some cases multiple work sites, at which one or more dig areas may be designated for planned excavation (or more generally, some disturbance of the ground). Today, excavators and other parties are required to notify one-call centers in advance of their excavation activities and identify through the locate request the work site(s)/dig area(s) where individual excavating activities/disturbances of the ground are planned. One-call centers may be any organizations, entities, and/or systems that receive, process, and/or transmit locate requests.

The information on the locate request may include, for example, the physical address or other location information about the dig area to which the locate technician is dispatched and the type of service that is requested, such as detecting and marking one or more types of facilities within a certain area of interest at a certain geographic site. Additionally, the locate request may specify a "must be complete by" date, a "must be performed on" date, and/or a "do not perform until" date.

In many instances, excavators and other parties who request a locate operation receive very limited or no notification as to whether or when the operation is complete. Once the locate request ticket is in a "closed" status, the one-call center may communicate to the excavator that the locate operation is complete. However, this communication may not be provided in a timely manner. Any delay between performing the locate operation and the planned excavation represents an inefficiency in the excavation process and, perhaps, lost profit by the excavation companies whose excavators may be unnecessarily idle. Additionally, because there is limited exchange of information between the excavators, other parties requesting locate operations, and locate service providers, there may be confusion as to the scope and status of the locate operation. In some instances, excavators arrive on site and find the locate/mark operation not done or done incorrectly; excavators often wait for the "complete by" date to pass, then arrive at the dig area under the assumption that the locate operation has been performed. Consequently, excavators may perform the planned excavation uncertain as to whether the locate operation is complete as requested or has been performed satisfactorily prior to beginning the excavation activities. As a result, there is a certain amount of risk of damage to underground facilities.

SUMMARY

Applicants have recognized and appreciated that a need exists for an information exchange process not just between excavators and other parties who may request locate and marking operations (hereafter a "requesting party," e.g., excavators, property owners, facilities owners, regulatory authorities, damage investigators, etc.) and locate service providers, but also among other key players involved in and relating to locate and/or marking operations. More specifically, a need exists for better ways of providing information to one or more requesting parties in a timely manner, for example, to reduce uncertainty and thereby reduce the risk of damage to underground facilities, and in some instances to also improve excavator efficiency.

In view of the foregoing, various inventive embodiments disclosed herein relate generally to providing information

relating to a locate and/or marking operation to excavators, other parties requesting locate and/or marking operations (a requesting party), and/or any other party associated with locate and/or marking activities.

In one embodiment, one or more computing devices (e.g., 5 having a processor, memory, communications interface, user interface/display, and/or input/output interface, etc.) may be configured so as to provide a graphical user interface (GUI) that may be accessed by a requesting party for a locate and/or marking operation, so as to facilitate submission of locate requests as well as selection and/or customization of “positive response” notifications. For purposes of the present disclosure, a “positive response” notification, or more simply “notification,” refers to one or more communications to one or more requesting parties for a locate and/or marking operation, which communications provide some indication of the status of the operation and/or information relating to one or more elements of performance of the operation. In some exemplary implementations, such computing devices/GUI may be provided by a one-call-center in a given jurisdiction, to both facilitate submission of locate requests in general, and to further provide for customization in the manner of receiving, and contents of, one or more positive response notifications that may be provided to the requesting party/parties. In other implementations, such computing devices/GUI may be provided by a third party that may be in communication both with one or more requesting parties and a one-call-center issuing locate request tickets.

In exemplary embodiments, in addition to submitting a locate request, in various aspects a requesting party may specify, via such a GUI, that they would like to receive one or more positive response notifications relating to the requested locate and/or marking operation. In addition to merely selecting an option to receive one or more positive response notifications, the requesting party may specify a particular communication mode in which they wish to receive notification(s) (e.g., text message; e-mail; voice message; etc.) and/or a particular format in which they wish to receive notification(s) (e.g., text based; HTML; images; text and images; tables with particular fields; flat files; etc.). Alternatively or additionally, 40 the requesting party may specify one or more particular times/events during an operation at which they wish to receive notification(s) (e.g., when a locate ticket is dispatched by a one call center; when a ticket is received by a utility owner/locate contractor; when a locate technician is dispatched; when a locate technician arrives at a work site/dig area; when a locate technician begins an operation; when an operation is complete; if and when an operation is approved by a supervisor/quality control assessment; if and when there is some anomaly regarding the operation with respect to information in the ticket; etc.). Likewise, alternatively or additionally, the requesting party may specify particular content that they wish to receive in one or more notifications (e.g., upon arrival of technician to work site, send arrival time and geo-location data/GPS coordinates of technician location; upon completion of the operation send a simple notification indicating such; upon completion of the operation, send a complete electronic manifest of all work performed during the operation; upon completion of the operation, send one or more images of the work site/dig area illustrating dispensed markings; send a quality assessment report or other quality assessment-related information, etc.).

Once a locate request is submitted, along with selection of positive response notification and preferences for same, the computing device(s) may be configured to thereafter receive further information from a variety of sources (e.g., facility owners; locate contractors; various equipment, instrumenta-

tion, and/or vehicles associated with dispatched technicians to perform locate and/or marking operations; etc.) relating to allocating tickets to available technicians and dispatching technicians, as well as various steps/events toward performance of the locate and marking operation. The computing device(s) acquire and process such information so as to appropriately provide positive response notification(s) to requesting parties pursuant to their selected preferences. In some embodiments, following receipt of a notification, a requesting party may optionally provide, or in some instances be mandated to provide (e.g., by contractual obligation, applicable statutes/regulations, etc.) an acknowledgement of receipt (e.g., a “return receipt”) for one or more received notifications.

In yet another embodiment, one or more computing devices may be configured so as to provide a graphical user interface (GUI) that not only facilitates submission of locate requests and positive response notification preferences, but also allows for the requesting party to prepare and submit a “virtual white lines” (VWL) image as part of the locate request. As discussed in greater detail herein, a VWL image may contain a digital image of the work site (or some other suitable digital data representing the geographic location of the work site) along with electronic annotations delimiting one or more dig areas in which excavation or disturbances to the ground are planned. Such electronic annotations also are referred to as “dig area indicators,” which may be any electronically generated markings indicating a point, line, path and/or area of the planned excavation. To facilitate generation of a VWL image, the computing device(s) may be configured to execute a VWL application which may be implemented, for example, as described in the following references: U.S. patent application Ser. No. 12/366,853 filed Feb. 6, 2009, entitled “Virtual white lines for delimiting planned excavation sites;” U.S. patent application Ser. No. 12/475,905 filed Jun. 1, 2009, entitled “Virtual white lines for delimiting planned excavation sites of staged excavation projects;” and U.S. patent application Ser. No. 12/422,364 filed Apr. 13, 2009, entitled “Virtual white lines (VWL) application for indicating a planned excavation or locate path,” each of which patent applications is hereby incorporated by reference herein in its entirety.

In some implementations relating to VWL images, the digital image on which dig area indicators are drawn may be geotagged (i.e., associated with geospatial metadata), and the one or more computing devices may be configured to execute the VWL application so as to use the geospatial metadata associated with the digital image to convert location information regarding the dig area indicators and/or landmarks shown in the digital image into geographic coordinates such as Global Positioning System (GPS) coordinates. These geographic coordinates may be stored in a separate data set that may be attached to a locate request instead of, or in addition to, the VWL image. Accordingly, pursuant to this embodiment, via a suitably-implemented GUI and a VWL application, a party requesting a locate and/or marking information may: 1) submit a locate request; 2) generate a VWL image and attach the image and/or a data set relating to a VWL image; and/or 3) select to receive one or more positive response notifications, and preferences for receiving same.

In sum, one embodiment of the present invention is directed to an apparatus for providing information regarding a locate and/or marking operation comprising detecting and/or marking, in response to at least one locate request ticket, a presence or an absence of at least one underground facility within a dig area, wherein at least a portion of the dig area is planned to be excavated or disturbed during excavation activi-

5

ties. The apparatus comprises a communication interface; a memory to store processor-executable instructions; and a processing unit communicatively coupled to the communication interface and the memory. Upon execution of the processor-executable instructions by the processing unit, the processing unit controls the communication interface to receive user input regarding a preferred notification type and/or a preferred notification communication method for at least one notification indicating a status and/or providing information relating to the performance of the locate and/or marking operation; generates the at least one notification based at least in part on the preferred notification type and/or the preferred notification communication method; and further controls the communication interface and/or the memory to electronically transmit and/or electronically store the at least one notification so as to inform at least one party associated with providing at least one locate request relating to the locate and/or marking operation of the status and/or performance of the locate and/or marking operation.

Another embodiment of the present invention is directed to at least one computer-readable medium encoded with instructions that, when executed on at least one processing unit, perform a method for providing information regarding a locate and/or marking operation comprising detecting and/or marking, in response to at least one locate request ticket, a presence or an absence of at least one underground facility within a dig area, wherein at least a portion of the dig area is planned to be excavated or disturbed during excavation activities. The method comprises A) electronically receiving user input regarding a preferred notification type and/or a preferred notification communication method for at least one notification indicating a status and/or providing information relating to the performance of the locate and/or marking operation; B) generating the at least one notification based at least in part on the preferred notification type and/or the preferred notification communication method; and C) electronically transmitting and/or electronically storing the at least one notification so as to inform at least one party associated with providing at least one locate request relating to the locate and/or marking operation of the status and/or performance of the locate and/or marking operation.

A further embodiment of the present invention is directed to a method for providing information regarding a locate and/or marking operation comprising detecting and/or marking, in response to at least one locate request ticket, a presence or an absence of at least one underground facility within a dig area, wherein at least a portion of the dig area is planned to be excavated or disturbed during excavation activities. The method comprises A) electronically receiving user input regarding a preferred notification type and/or a preferred notification communication method for at least one notification indicating a status and/or providing information relating to the performance of the locate and/or marking operation; B) generating the at least one notification based at least in part on the preferred notification type and/or the preferred notification communication method; and C) electronically transmitting and/or electronically storing the at least one notification so as to inform at least one party associated with providing at least one locate request relating to the locate and/or marking operation of the status and/or performance of the locate and/or marking operation.

Another embodiment of the present invention is directed to an apparatus for providing information regarding a locate and/or marking operation comprising detecting and/or marking, in response to at least one locate request ticket, a presence or an absence of at least one underground facility within a dig area, wherein at least a portion of the dig area is planned to be

6

excavated or disturbed during excavation activities. The apparatus comprises a communication interface; a memory to store processor-executable instructions; and a processing unit communicatively coupled to the communication interface and the memory. Upon execution of the processor-executable instructions by the processing unit, the processing unit controls the communication interface to receive an input indicating that the locate and/or marking operation is in progress or complete; generates at least one notification indicating that the locate and/or marking operation is in progress or complete; and further controls the communication interface and/or the memory to electronically transmit and/or electronically store the at least one notification so as to inform at least one party associated with providing at least one locate request relating to the locate and/or marking operation that the locate and/or marking operation is in progress or complete.

A further embodiment of the present invention is directed to at least one computer-readable medium encoded with instructions that, when executed on at least one processing unit, perform a method for providing information regarding a locate and/or marking operation comprising detecting and/or marking, in response to at least one locate request ticket, a presence or an absence of at least one underground facility within a dig area, wherein at least a portion of the dig area is planned to be excavated or disturbed during excavation activities. The method comprises A) electronically receiving an input indicating that the locate and/or marking operation is in progress or complete; B) generating at least one notification indicating that the locate and/or marking operation is in progress or complete; and C) electronically transmitting and/or electronically storing the at least one notification so as to inform at least one party associated with providing at least one locate request relating to the locate and/or marking operation that the locate and/or marking operation is in progress or complete.

Another embodiment of the present invention is directed to a method for providing information regarding a locate and/or marking operation comprising detecting and/or marking, in response to at least one locate request ticket, a presence or an absence of at least one underground facility within a dig area, wherein at least a portion of the dig area is planned to be excavated or disturbed during excavation activities. The method comprises A) electronically receiving an input indicating that the locate and/or marking operation is in progress or complete; B) generating at least one notification indicating that the locate and/or marking operation is in progress or complete; and C) electronically transmitting and/or electronically storing the at least one notification so as to inform at least one party associated with providing at least one locate request relating to the locate and/or marking operation that the locate and/or marking operation is in progress or complete.

A further embodiment of the present invention is directed to an apparatus for providing information regarding a locate and/or marking operation comprising detecting and/or marking, in response to at least one locate request ticket, a presence or an absence of at least one underground facility within a dig area, wherein at least a portion of the dig area is planned to be excavated or disturbed during excavation activities. The apparatus comprises a communication interface; a memory to store processor-executable instructions; and a processing unit communicatively coupled to the communication interface and the memory. Upon execution of the processor-executable instructions by the processing unit, the processing unit controls the communication interface to receive an input indicating that the locate and/or marking operation is complete; and based on the input indicating that the locate and/or marking

operation is complete, further controls the communication interface and/or the memory to electronically transmit and/or electronically store at least one of the following so as to provide information concerning the locate and/or marking operation to at least one party associated with providing at least one locate request relating to the locate and/or marking operation: (a) a virtual white line image indicating the dig area; (b) an electronic copy of a completed locate request ticket; (c) an electronic manifest image showing details of the locate and/or marking operation; and (d) an electronic representation of the locate and/or marking operation.

Another embodiment of the present invention is directed to at least one computer-readable medium encoded with instructions that, when executed on at least one processing unit, perform a method for providing information regarding a locate and/or marking operation comprising detecting and/or marking, in response to at least one locate request ticket, a presence or an absence of at least one underground facility within a dig area, wherein at least a portion of the dig area is planned to be excavated or disturbed during excavation activities. The method comprises A) electronically receiving an input indicating that the locate and/or marking operation is complete; and B) based on the input indicating that the locate and/or marking operation is complete, electronically transmitting and/or electronically storing at least one of the following so as to provide information concerning the locate and/or marking operation to at least one party associated with providing at least one locate request relating to the locate and/or marking operation: (a) a virtual white line image indicating the dig area; (b) an electronic copy of a completed locate request ticket; (c) an electronic manifest image showing details of the locate and/or marking operation; and (d) an electronic representation of the locate and/or marking operation.

A further embodiment of the present invention is directed to a method for providing information regarding a locate and/or marking operation comprising detecting and/or marking, in response to at least one locate request ticket, a presence or an absence of at least one underground facility within a dig area, wherein at least a portion of the dig area is planned to be excavated or disturbed during excavation activities. The method comprises A) electronically receiving an input indicating that the locate and/or marking operation is complete; and B) based on the input indicating that the locate and/or marking operation is complete, electronically transmitting and/or electronically storing at least one of the following so as to provide information concerning the locate and/or marking operation to at least one party associated with providing at least one locate request relating to the locate and/or marking operation: (a) a virtual white line image indicating the dig area; (b) an electronic copy of a completed locate request ticket; (c) an electronic manifest image showing details of the locate and/or marking operation; and (d) an electronic representation of the locate and/or marking operation.

Another embodiment of the present invention is directed to an apparatus for providing information regarding a locate and/or marking operation comprising detecting and/or marking, in response to at least one locate request ticket, a presence or an absence of at least one underground facility within a dig area, wherein at least a portion of the dig area is planned to be excavated or disturbed during excavation activities. The apparatus comprises a communication interface; a memory to store processor-executable instructions; and a processing unit communicatively coupled to the communication interface and the memory. Upon execution of the processor-executable instructions by the processing unit, the processing unit electronically receives, via the communication interface, first user

input relating to the dig area; based on the first user input, renders a digital virtual white line image including at least one dig area indicator to provide at least one indication of the dig area with respect to a geographic area; controls the communication interface and/or the memory to electronically transmit and/or electronically store information relating to the digital virtual white line image so as to facilitate the locate and/or marking operation; further controls the communication interface to electronically receive second user input regarding a preferred notification type and/or a preferred notification communication method for at least one notification indicating a status and/or providing information relating to the performance of the locate and/or marking operation; generates the at least one notification based at least in part on the preferred notification type and/or the preferred notification communication method; and further controls the communication interface and/or the memory to electronically transmit and/or electronically store the at least one notification so as to inform at least one party associated with providing at least one locate request relating to the locate and/or marking operation of the status and/or performance of the locate and/or marking operation.

Another embodiment of the present invention is directed to at least one computer-readable medium encoded with instructions that, when executed on at least one processing unit, perform a method for providing information regarding a locate and/or marking operation comprising detecting and/or marking, in response to at least one locate request ticket, a presence or an absence of at least one underground facility within a dig area, wherein at least a portion of the dig area is planned to be excavated or disturbed during excavation activities. The method comprises A) electronically receiving first user input relating to the dig area; B) based on the first user input, rendering a digital virtual white line image including at least one dig area indicator to provide at least one indication of the dig area with respect to a geographic area; C) electronically transmitting and/or electronically storing information relating to the digital virtual white line image so as to facilitate the locate and/or marking operation; D) electronically receiving second user input regarding a preferred notification type and/or a preferred notification communication method for at least one notification indicating a status and/or providing information relating to the performance of the locate and/or marking operation; E) generating the at least one notification based at least in part on the preferred notification type and/or the preferred notification communication method; and F) electronically transmitting and/or electronically storing the at least one notification so as to inform at least one party associated with providing at least one locate request relating to the locate and/or marking operation of the status and/or performance of the locate and/or marking operation.

A further embodiment of the present invention is directed to a method for providing information regarding a locate and/or marking operation comprising detecting and/or marking, in response to at least one locate request ticket, a presence or an absence of at least one underground facility within a dig area, wherein at least a portion of the dig area is planned to be excavated or disturbed during excavation activities. The method comprises A) electronically receiving first user input relating to the dig area; B) based on the first user input, rendering a digital virtual white line image including at least one dig area indicator to provide at least one indication of the dig area with respect to a geographic area; C) electronically transmitting and/or electronically storing information relating to the digital virtual white line image so as to facilitate the locate and/or marking operation; D) electronically receiving second user input regarding a preferred notification type and/

or a preferred notification communication method for at least one notification indicating a status and/or providing information relating to the performance of the locate and/or marking operation; E) generating the at least one notification based at least in part on the preferred notification type and/or the preferred notification communication method; and F) electronically transmitting and/or electronically storing the at least one notification so as to inform at least one party associated with providing at least one locate request relating to the locate and/or marking operation of the status and/or performance of the locate and/or marking operation.

Another embodiment of the present invention is directed to an apparatus for providing information regarding a locate and/or marking operation comprising detecting and/or marking, in response to at least one locate request ticket, a presence or an absence of at least one underground facility within a dig area, wherein at least a portion of the dig area is planned to be excavated or disturbed during excavation activities. The apparatus comprises a communication interface; a memory to store processor-executable instructions; and a processing unit communicatively coupled to the communication interface and the memory. Upon execution of the processor-executable instructions by the processing unit, the processing unit electronically receives a locate request via the communication interface; based on the locate request, generates the at least one locate request ticket; controls the communication interface and/or the memory to electronically transmit and/or electronically store the locate request ticket so as to initiate the locate and/or marking operation; further controls the communication interface to electronically receive user input regarding a preferred notification type and/or a preferred notification communication method for at least one notification indicating a status and/or providing information relating to the performance of the locate and/or marking operation; generates the at least one notification based at least in part on the preferred notification type and/or the preferred notification communication method; and further controls the communication interface and/or the memory to electronically transmit and/or electronically store the at least one notification so as to inform at least one party associated with providing at least one locate request relating to the locate and/or marking operation of the status and/or performance of the locate and/or marking operation.

Another embodiment of the present invention is directed to at least one computer-readable medium encoded with instructions that, when executed on at least one processing unit, perform a method for providing information regarding a locate and/or marking operation comprising detecting and/or marking, in response to at least one locate request ticket, a presence or an absence of at least one underground facility within a dig area, wherein at least a portion of the dig area is planned to be excavated or disturbed during excavation activities. The method comprises A) electronically receiving a locate request; B) based on the locate request, generating the at least one locate request ticket; C) electronically transmitting and/or electronically storing the locate request ticket so as to initiate the locate and/or marking operation; D) electronically receiving user input regarding a preferred notification type and/or a preferred notification communication method for at least one notification indicating a status and/or providing information relating to the performance of the locate and/or marking operation; E) generating the at least one notification based at least in part on the preferred notification type and/or the preferred notification communication method; and F) electronically transmitting and/or electronically storing the at least one notification so as to inform at least one party associated with providing at least one locate

request relating to the locate and/or marking operation of the status and/or performance of the locate and/or marking operation.

A further embodiment of the present invention is directed to a method for providing information regarding a locate and/or marking operation comprising detecting and/or marking, in response to at least one locate request ticket, a presence or an absence of at least one underground facility within a dig area, wherein at least a portion of the dig area is planned to be excavated or disturbed during excavation activities. The method comprises A) electronically receiving a locate request; B) based on the locate request, generating the at least one locate request ticket; C) electronically transmitting and/or electronically storing the locate request ticket so as to initiate the locate and/or marking operation; D) electronically receiving user input regarding a preferred notification type and/or a preferred notification communication method for at least one notification indicating a status and/or providing information relating to the performance of the locate and/or marking operation; E) generating the at least one notification based at least in part on the preferred notification type and/or the preferred notification communication method; and F) electronically transmitting and/or electronically storing the at least one notification so as to inform at least one party associated with providing at least one locate request relating to the locate and/or marking operation of the status and/or performance of the locate and/or marking operation.

Another embodiment of the present invention is directed to a method for providing information regarding a locate and/or marking operation comprising detecting and/or marking, in response to at least one locate request ticket, a presence or an absence of at least one underground facility within a dig area, wherein at least a portion of the dig area is planned to be excavated or disturbed during excavation activities. The method comprises A) electronically receiving user input regarding at least one notification type and/or at least one notification communication method for at least one notification indicating a status and/or providing information relating to the performance of the locate and/or marking operation; B) generating the at least one notification based at least in part on the at least one notification type and/or the at least one notification communication method; and C) electronically transmitting and/or electronically storing the at least one notification so as to inform at least one party associated with providing at least one locate request relating to the locate and/or marking operation of the status and/or performance of the locate and/or marking operation. According to some implementations, the at least one notification type and/or the at least one notification communication method may be mandated by at least one regulation and/or required by at least one contract.

For purposes of the present disclosure, the term “dig area” refers to a specified area of a work site within which there is a plan to disturb the ground (e.g., excavate, dig holes and/or trenches, bore, etc.), and beyond which there is no plan to excavate in the immediate surroundings. Thus, the metes and bounds of a dig area are intended to provide specificity as to where some disturbance to the ground is planned at a given work site. It should be appreciated that a given work site may include multiple dig areas.

The term “facility” refers to one or more lines, cables, fibers, conduits, transmitters, receivers, or other physical objects or structures capable of or used for carrying, transmitting, receiving, storing, and providing utilities, energy, data, substances, and/or services, and/or any combination thereof. The term “underground facility” means any facility beneath the surface of the ground. Examples of facilities

include, but are not limited to, oil, gas, water, sewer, power, telephone, data transmission, cable television (TV), and/or internet services.

The term “locate device” refers to any apparatus and/or device for detecting and/or inferring the presence or absence of any facility, including without limitation, any underground facility. In various examples, a locate device may include both a locate transmitter and a locate receiver (which in some instances may also be referred to collectively as a “locate instrument set,” or simply “locate set”).

The term “marking device” refers to any apparatus, mechanism, or other device that employs a marking dispenser for causing a marking material and/or marking object to be dispensed, or any apparatus, mechanism, or other device for electronically indicating (e.g., logging in memory) a location, such as a location of an underground facility.

The term “locate mark” means any mark, sign, and/or object employed to indicate the presence or absence of any underground facility. Examples of locate marks may include, but are not limited to, marks made with marking materials, marking objects, global positioning or other information, and/or any other means. Locate marks may be represented in any form including, without limitation, physical, visible, electronic, and/or any combination thereof.

The terms “locate and marking operation,” “locate operation,” and “locate” generally are used interchangeably and refer to any activity to detect, infer, and/or mark the presence or absence of an underground facility. In some contexts, the term “locate operation” is used to more specifically refer to detection of one or more underground facilities, and the term “marking operation” is used to more specifically refer to using a marking material and/or one or more marking objects to mark a presence or an absence of one or more underground facilities. The term “locate technician” refers to an individual performing a locate operation. A locate and marking operation often is specified in connection with a dig area, at least a portion of which may be excavated or otherwise disturbed during excavation activities.

The term “user” refers to an individual utilizing a locate device and/or a marking device and may include, but is not limited to, land surveyors, locate technicians, and support personnel.

The terms “locate request,” “excavation notice,” and “work order” are used herein interchangeably to refer to any communication to request a locate and marking operation. The term “locate request ticket” (or simply “ticket”) refers to any communication or instruction to perform a locate operation. A ticket might specify, for example, the address or description of a dig area to be marked, the day and/or time that the dig area is to be marked, and/or whether the user is to mark the excavation area for certain gas, water, sewer, power, telephone, cable television, and/or some other underground facility.

The following U.S. published applications are hereby incorporated herein by reference:

U.S. publication no. 2008-0228294-A1, published Sep. 18, 2008, filed Mar. 13, 2007, and entitled “Marking System and Method With Location and/or Time Tracking;”

U.S. publication no. 2008-0245299-A1, published Oct. 9, 2008, filed Apr. 4, 2007, and entitled “Marking System and Method;”

U.S. publication no. 2009-0013928-A1, published Jan. 15, 2009, filed Sep. 24, 2008, and entitled “Marking System and Method;”

U.S. publication no. 2009-0202101-A1, published Aug. 13, 2009, filed Feb. 12, 2008, and entitled “Electronic Manifest of Underground Facility Locate Marks;”

U.S. publication no. 2009-0202110-A1, published Aug. 13, 2009, filed Sep. 11, 2008, and entitled “Electronic Manifest of Underground Facility Locate Marks;”

U.S. publication no. 2009-0201311-A1, published Aug. 13, 2009, filed Jan. 30, 2009, and entitled “Electronic Manifest of Underground Facility Locate Marks;”

U.S. publication no. 2009-0202111-A1, published Aug. 13, 2009, filed Jan. 30, 2009, and entitled “Electronic Manifest of Underground Facility Locate Marks;”

U.S. publication no. 2009-0204625-A1, published Aug. 13, 2009, filed Feb. 5, 2009, and entitled “Electronic Manifest of Underground Facility Locate Operation;”

U.S. publication no. 2009-0204466-A1, published Aug. 13, 2009, filed Sep. 4, 2008, and entitled “Ticket Approval System For and Method of Performing Quality Control In Field Service Applications;”

U.S. publication no. 2009-0207019-A1, published Aug. 20, 2009, filed Apr. 30, 2009, and entitled “Ticket Approval System For and Method of Performing Quality Control In Field Service Applications;”

U.S. publication no. 2009-0210284-A1, published Aug. 20, 2009, filed Apr. 30, 2009, and entitled “Ticket Approval System For and Method of Performing Quality Control In Field Service Applications;”

U.S. publication no. 2009-0210297-A1, published Aug. 20, 2009, filed Apr. 30, 2009, and entitled “Ticket Approval System For and Method of Performing Quality Control In Field Service Applications;”

U.S. publication no. 2009-0210298-A1, published Aug. 20, 2009, filed Apr. 30, 2009, and entitled “Ticket Approval System For and Method of Performing Quality Control In Field Service Applications;”

U.S. publication no. 2009-0210285-A1, published Aug. 20, 2009, filed Apr. 30, 2009, and entitled “Ticket Approval System For and Method of Performing Quality Control In Field Service Applications;”

U.S. publication no. 2009-0204238-A1, published Aug. 13, 2009, filed Feb. 2, 2009, and entitled “Electronically Controlled Marking Apparatus and Methods;”

U.S. publication no. 2009-0208642-A1, published Aug. 20, 2009, filed Feb. 2, 2009, and entitled “Marking Apparatus and Methods For Creating an Electronic Record of Marking Operations;”

U.S. publication no. 2009-0210098-A1, published Aug. 20, 2009, filed Feb. 2, 2009, and entitled “Marking Apparatus and Methods For Creating an Electronic Record of Marking Apparatus Operations;”

U.S. publication no. 2009-0201178-A1, published Aug. 13, 2009, filed Feb. 2, 2009, and entitled “Methods For Evaluating Operation of Marking Apparatus;”

U.S. publication no. 2009-0202112-A1, published Aug. 13, 2009, filed Feb. 11, 2009, and entitled “Searchable Electronic Records of Underground Facility Locate Marking Operations;”

U.S. publication no. 2009-0204614-A1, published Aug. 13, 2009, filed Feb. 11, 2009, and entitled “Searchable Electronic Records of Underground Facility Locate Marking Operations;”

U.S. publication no. 2009-0238414-A1, published Sep. 24, 2009, filed Mar. 18, 2008, and entitled “Virtual White Lines for Delimiting Planned Excavation Sites;”

U.S. publication no. 2009-0241045-A1, published Sep. 24, 2009, filed Sep. 26, 2008, and entitled “Virtual White Lines for Delimiting Planned Excavation Sites;”

U.S. publication no. 2009-0238415-A1, published Sep. 24, 2009, filed Sep. 26, 2008, and entitled “Virtual White Lines for Delimiting Planned Excavation Sites;”

U.S. publication no. 2009-0241046-A1, published Sep. 24, 2009, filed Jan. 16, 2009, and entitled “Virtual White Lines for Delimiting Planned Excavation Sites;”

U.S. publication no. 2009-0238416-A1, published Sep. 24, 2009, filed Jan. 16, 2009, and entitled “Virtual White Lines for Delimiting Planned Excavation Sites;”

U.S. publication no. 2009-0237408-A1, published Sep. 24, 2009, filed Jan. 16, 2009, and entitled “Virtual White Lines for Delimiting Planned Excavation Sites;”

U.S. publication no. 2009-0238417-A1, published Sep. 24, 2009, filed Feb. 6, 2009, and entitled “Virtual White Lines for Indicating Planned Excavation Sites on Electronic Images;”

U.S. publication no. 2009-0327024-A1, published Dec. 31, 2009, filed Jun. 26, 2009, and entitled “Methods and Apparatus for Quality Assessment of a Field Service Operation;”

U.S. publication no. 2010-0010862-A1, published Jan. 14, 2010, filed Aug. 7, 2009, and entitled “Methods and Apparatus for Quality Assessment of a Field Service Operation Based on Geographic Location;”

U.S. publication no. 2010-0010863-A1, published Jan. 14, 2010, filed Aug. 7, 2009, and entitled “Methods and Apparatus for Quality Assessment of a Field Service Operation Based on Multiple Scoring Categories;”

U.S. publication no. 2010-0010882-A1, published Jan. 14, 2010, filed Aug. 7, 2009, and entitled “Methods and Apparatus for Quality Assessment of a Field Service Operation Based on Dynamic Assessment Parameters;” and

U.S. publication no. 2010-0010883-A1, published Jan. 14, 2010, filed Aug. 7, 2009, and entitled “Methods and Apparatus for Facilitating a Quality Assessment of a Field Service Operation Based on Multiple Quality Assessment Criteria.”

It should be appreciated that all combinations of the foregoing concepts and additional concepts discussed in greater detail below (provided such concepts are not mutually inconsistent) are contemplated as being part of the inventive subject matter disclosed herein. In particular, all combinations of claimed subject matter appearing at the end of this disclosure are contemplated as being part of the inventive subject matter disclosed herein. It should also be appreciated that terminology explicitly employed herein that also may appear in any disclosure incorporated by reference should be accorded a meaning most consistent with the particular concepts disclosed herein.

BRIEF DESCRIPTION OF THE DRAWINGS

The drawings are not necessarily to scale, emphasis instead generally being placed upon illustrating the principles of the invention.

FIG. 1 illustrates an example of an information exchange process flow that includes a link between excavators and locate personnel, according to one embodiment of the present invention;

FIG. 2 illustrates a functional block diagram of an example of an informed excavator system for exchanging information between excavators and other entities associated with locate operations, according to one embodiment of the present invention;

FIG. 3 illustrates an exemplary excavator device according to one aspect of the present invention, which supports a “virtual white line” (VWL) application to display an image of a geographic area including a dig area and facilitate adding virtual white lines to the displayed image to indicate the dig area;

FIG. 4 illustrates an exemplary locate personnel device according to one aspect of the present invention, which sup-

ports an “electronic manifest” (EM) application to display an image of a geographic area including a dig area and facilitate adding one or more indicators to the displayed image representing one or more physical locate marks applied to the dig area to indicate a presence or an absence of one or more underground facilities;

FIG. 5 illustrates various elements of an informed excavator application for providing information regarding the status of locate operations, according to one embodiment of the present invention;

FIG. 6 illustrates a flow diagram of an exemplary method of providing information regarding the status of locate operations, according to one embodiment of the present invention;

FIG. 7 illustrates a flow diagram of an exemplary method of generating locate request tickets and performing locate operations in response to such tickets, which method employs aspects of the method illustrated in FIG. 6 for providing information regarding the status of locate operations, according to one embodiment of the present invention;

FIG. 8 illustrates a flow diagram of an exemplary method of providing information regarding the status of locate operations and generating a virtual white lines image as part of a locate request submission, according to one embodiment of the present invention;

FIG. 9 illustrates an exemplary computing device (e.g., a computer) that is configured to execute an excavator information application, according to one embodiment of the present invention; and

FIG. 10 illustrates an exemplary graphical user interface that may be used in connection with providing inputs to the excavator information application, according to one embodiment of the present invention.

DETAILED DESCRIPTION

Following below are more detailed descriptions of various concepts related to, and embodiments of, inventive systems, methods and apparatus for providing an information exchange process between excavators and other entities associated with underground facility locate operations. In various aspects, these methods, apparatus, and systems provide communication infrastructure and mechanisms by which information exchange regarding locate and/or marking operations, such as status information, may be reported in real-time and/or other times to excavators or other parties who originate locate requests.

For purposes of illustrating exemplary embodiments, in the more detailed discussion below an exemplary requesting party is taken to be an excavator, and the systems, methods and apparatus discussed herein are sometimes referred to as “informed excavator” systems, methods and apparatus. However, it should be appreciated that any reference to an “excavator” or “informed excavator” is merely exemplary, as the concepts discussed herein are contemplated as applying more generally to various parties who may request a locate and/or marking operation, examples of which parties may include, but are not limited to, property owners (e.g., home owners, business owners), facility owners, regulatory authorities, damage investigators, and the like. More generally, it should be appreciated that various concepts introduced above and discussed in greater detail below may be implemented in any of numerous ways, as the disclosed concepts are not limited to any particular manner of implementation. Examples of specific implementations and applications are provided primarily for illustrative purposes.

While currently a simple conventional communication process may exist between requesting parties and one-call

15

centers and, likewise, a communication process may exist between one-call centers and locate parties, an aspect of the informed excavator systems, methods and apparatus disclosed herein is that they provide an information exchange process among requesting parties, one-call centers and locate parties (independent locate service providers, and/or facility owners who perform their own locate and/or marking operations) which is otherwise not present in current processes with respect to locate operations. Another aspect of the informed excavator system and associated methods of the present disclosure is that it provides improved information exchange between excavators and locate service providers.

Yet another aspect of the informed excavator system and associated methods of the present disclosure is that it provides better ways of communicating the status of locate operations to excavators in a timely manner, which may significantly reduce, and preferably entirely eliminate, the uncertainty as to whether the locate operation is complete.

Still another aspect of the informed excavator system and associated methods of the present disclosure is that it provides information to the excavator about the locate operation prior to beginning the excavation activities. This substantially improves the confidence of the excavator that the locate operation has been performed satisfactorily, which may significantly reduce, and preferably entirely eliminate, the risk of damage to underground facilities.

Still another aspect of the informed excavator system and associated methods of the present disclosure is that it provides improved project planning, decision making, management, and/or tracking with respect to locate operations.

Referring to FIG. 1, an example of information exchange process flow **100** that includes a link between excavators and locate personnel is presented. For example, information exchange process flow **100** may include a communications loop among one or more excavation companies **110** and their associated excavators **114**, one or more one-call centers **120**, and one or more locate parties **130** and their associated locate personnel **134**.

Excavation companies, such as excavation companies **110**, may be any companies that provide excavation services for any purpose, such as, but not limited to, excavation services related to the construction industry and excavation services related to the installation and/or maintenance of underground facilities. Excavators **114** may be any personnel associated with excavation companies **110**, such as, but not limited to, individuals who are requesting and/or performing the excavation operations. In particular, excavators **114** generate locate requests (i.e., tickets), which may be processed via a certain one-call center **120**. A ticket may be any communication or instruction to perform a locate operation at a certain dig area, which is any specified geographic area within which excavation may occur.

One-call centers, such as one-call centers **120**, may be any organizations, entities, and/or systems that receive, process, and/or transmit locate requests. The locate request (or ticket) may be any communication or instruction to perform a locate operation. One-call centers are generally owned, controlled, or funded by underground facility owners, such as telephone companies, cable television multiple system operators, electric utilities, gas utilities, or others. One-call center operations may be managed by a non-profit entity or outsourced to a for-profit firm. Excavators, such as excavators **114**, are required to notify one-call centers in advance of their excavation activities and identify through the locate request the dig area where individual excavating activities will be performed. Locate requests may include information supplied by the excavator to the one-call center regarding the specific

16

geographic location of the dig area, date, time, purpose of excavation, and so on. The locate request, in turn, requires activity from an underground facility owner to perform a locate operation in the specified dig area.

Locate parties/entities, such as locate parties **130**, may be any parties that provide locate services. Multiple locate personnel **134** may be associated with each locate party **130**. Locate personnel **134** may be, for example, locate technicians and/or quality control technicians that, for example, perform locate operations.

While a communication process may exist between excavation companies and one-call centers and also may exist between one-call centers and locate parties in current processes, an aspect of the information exchange process flow **100** of the present disclosure is that it further includes a communications link between excavation companies and locate parties, which is otherwise not present in current processes for generating and processing locate requests. In this way, the communications loop among, for example, excavation companies **110**, one-call centers **120**, and locate parties **130** is closed. As a result, a free flow of information with respect to information about locate operations may occur. More details of an example of a system for facilitating a closed loop communications flow, such as information exchange process flow **100**, with respect to locate operations are described with reference to FIGS. **2** through **7**.

Referring to FIG. **2**, a functional block diagram of an example of an informed excavator system **200** for exchanging information between excavators and other entities associated with locate operations is presented. In particular, informed excavator system **200** is suitable for facilitating a flow of information among excavation companies, one-call centers, and locate parties in order to provide to the originating excavators notification of the status of locate operations and any other useful information about locate operations.

Informed excavator system **200** may include, but is not limited to, the one or more one-call centers **120** of FIG. **1**, an image server **210** that may be used by the one or more excavators **114**, one or more onsite computers **220** that may be used by locate personnel **134** and/or excavators **114**, excavator devices **212**, locate personnel devices **218**, and a central server **222**. A network **224** provides the communication link between any and/or among all entities of informed excavator system **200**. For example, network **224** provides the communication network by which information may be exchanged among one-call centers **120**, image server **210**, central server **222**, onsite computers **220**, excavator devices **212** and locate personnel devices **218**. Network **224** may be, for example, any local area network (LAN) and/or wide area network (WAN) for connecting to the Internet.

In order to connect to network **224**, each entity of informed excavator system **200** includes a communication interface (not shown). For example, the respective communication interfaces of one-call centers **120**, image server **210**, central server **222**, and onsite computers **220**, as well as excavator and locate personnel devices, may be any wired and/or wireless communication interface by which information may be exchanged between any entities of informed excavator system **200**. Examples of wired communication interfaces may include, but are not limited to, USB ports, RS232 connectors, RJ45 connectors, Ethernet, and any combinations thereof. Examples of wireless communication interfaces may include, but are not limited to, an Intranet connection, Internet, Bluetooth® technology, Wi-Fi, Wi-Max, IEEE 802.11 technology, radio frequency (RF), Infrared Data Association (IrDA) compatible protocols, Local Area Networks (LAN), Wide

Area Networks (WAN), Shared Wireless Access Protocol (SWAP), any combinations thereof, and other types of wireless networking protocols.

In exemplary implementations, each entity of the informed excavator system **200** shown in FIG. **2** also generally includes a memory (e.g., one or more computer-readable media) to store processor-executable instructions as well as other data. Each entity also includes one or more processing units coupled to the communication interface and the memory, wherein upon execution of the processor-executable instructions by the processing unit, the processing unit performs a variety of functions as set forth in greater detail below. Generally speaking, many of the various functionalities described herein and attributed to various entities of the informed excavator system **200** shown in FIG. **2** may be encoded as processor-executable instructions stored in/on one or more computer readable media.

Informed excavator system **200** is not limited to the types and numbers of entities that are shown in FIG. **2**. Any types and numbers of entities that may be useful in underground facilities locate applications may be included in informed excavator system **200**.

Image server **210** may be any application server, such as a web application server and/or web portal, by which excavators **114**, one-call center **120**, and locate parties and their personnel may access certain tools with respect to submitting and/or processing locate requests (or tickets) and/or for processing notifications about locate operations, including access to various images relating to the locate operations and excavation activities. Application server **210** may be accessed by excavators **114** via any networked computing device (not shown).

Central server **222** may be a centralized computer, such as a central server of, for example, a certain locate party **130** of FIG. **1**, which is the underground facility locate service provider. Central server **222** may be utilized for managing the overall operations of informed excavator system **200**. When authorized, applications and/or information that reside on central server **222** may be accessible by any other entities of informed excavator system **200** via network **224**. For example, residing on central server **222** may be a workforce management application **254**, a ticket approval application **256**, and a notification application (“informed excavator application”) **258**.

Each onsite computer **220** may be any computer, such as, but not limited to, a computer that is present in the vehicle that is being used by the field service personnel. Each onsite computer **220** may be, for example, any computing device, such as portable computer, a personal computer, a tablet device, a PDA, a cellular radiotelephone, a mobile computing device, a touch-screen device, a touchpad device, or generally any device including, or connected to, a processor and a user interface. Preferably, onsite computer **220** is a portable computing device, such as laptop computer or tablet device. Residing on onsite computer **220** may be certain tools, such as, but not limited to, a VWL viewer, an electronic manifest (EM) application, and a workforce management client.

VWL applications **232** and **234**, which may be accessed via the image server **210** and downloaded for use on an onsite computer **220**, an excavator device **212** and/or a one-call center **120**, is a tool for electronically delimiting the particular geographic location of the proposed excavation in order to provide a substantially permanent and reproducible record of the planned excavation. For example, VWL application **232** (and similarly VWL application **234**) may be a drawing application, which, in excavation applications, may be used by the excavator **114** as a dig area marking tool. More specifically,

VWL application **232** may be used by the excavator **114** to add markings to an input image to graphically delimit a dig area. For example, VWL application **232** may be used to superimpose over or otherwise display “virtual white lines” on an input image (e.g., an aerial image) that may be received from, for example, the image server **210**. As used herein, the virtual white lines may include lines, drawing shapes, shades, points, symbols, coordinates, data sets, or other indicators to delimit on an input image the dig area in which excavation is to occur. FIG. **3** illustrates an exemplary excavator device **212** according to one aspect of the present invention, which supports VWL application **232** to display an image of a geographic area including a dig area and facilitate adding virtual white lines **260** to the displayed image to provide a marked-up VWL image **238** on which is indicated the dig area.

Additionally, VWL application **232** may be the application by which excavators **114** may submit locate requests **236** to one-call centers **120**, wherein the locate requests **236** may include the VWL image(s) **238** that are generated by excavators **114**. Alternatively, excavators **114** may submit locate requests without virtual white line marked-up images to one-call centers **120**, and in turn the one-call centers **120** may use the information in the locate request submitted by the excavator to in turn generate a virtual white line marked-up image **238**, via VWL application **234**, that is then forwarded to one or more locate parties **130** as locate request **236**.

A project component of VWL applications **232** or **234** allows excavators **114** or a one-call center **120** to generate a series of VWL images that may be associated with multiple phases of a “project ticket,” meaning a locate request for an ongoing project that requires multiple locate operations over, for example, a span of several days. An example of such a project may be excavation to lay fiber optics along a 20 mile stretch of a highway. With respect to locate operations, the project ticket may be generated that specifies certain subsections to be located and a timetable. Further to the example, the project component of the VWL application may allow the excavator **114** or the one-call center **120** to generate a first VWL image for mile 1 of 20, a second VWL image for mile 2 of 20, a third VWL image for mile 3 of 20, a fourth VWL image for mile 4 of 20, and so on. Each image of the series may be named and/or labeled in a manner that allows the VWL application to read in the series of VWL images in the correct order and geographic position and then overlay all of the VWL images to show the full scope of the locate operation with respect to the project ticket.

Hereafter, the term “VWL image” means a single VWL image of a locate request (or ticket) and/or a series of VWL images of a project ticket.

In one embodiment of the informed excavator system **200** shown in FIG. **2**, an informed excavator application **258**, which may reside on the central server **222**, provides for the communication of information relating to the status of one or more locate operations. As discussed in greater detail below, such status information may be communicated in real time during various phases of a given locate operation, or at some point after the completion of a locate operation, to excavators, one-call centers, or other parties associated with the locate operation. In some exemplary implementations, an excavator may provide profile information regarding preferences in receiving notifications of the status information, in response to which one or more notifications may be automatically provided to the excavator.

For example, an excavator **114** may login to the informed excavator application **258** and specify (e.g., via a menu) the types of notifications that he/she wishes to receive and the methods by which notifications may be automatically

received. For each excavator **114**, the selected types and methods of notification may be saved in a respective “excavator profile” of informed excavator application **258**. In this case, the specified preferences may be applied, by default, to all locate requests originated by that excavator. However, notification preferences may also be established in connection with individual locate operations or the like. For example, the excavator may be prompted to separately specify his or her preferences for notifications in connection with each requested locate operation. An excavator may override globally established notification preferences by specifying notification preferences for a particular locate operation without affecting the preferences set forth in the excavator profile.

Examples of types of notifications may include, but are not limited to, the following:

“Locate technician dispatched to dig area,” which means that the locate technician is in route to the dig area. For example, the notification that is transmitted to the originating excavator **114** may be—“For Ticket No. 2645134, the locate technician Jack Stewart, telephone no. 622-222-2222, has been dispatched to dig area on Friday, Dec. 5, 2008 at 9:30 AM.”

Such a notification may include a map or a link to a map that shows the locate technician’s current location. The locate technician’s location may be based on location information derived from a global positioning system (GPS) device or other positioning system device associated with the locate technician. For example, the locate technician’s location may be based on coordinates received from a GPS-enabled vehicle, computer, or personal digital assistant (PDA) in proximity to the locate technician while traveling between dig areas and/or during locate operations. The workforce management application **254** described in connection with FIG. **2** may receive and manage such location information.

“Locate technician on site at dig area,” which means that locate technician has arrived at the dig area. For example, the notification that is transmitted to the originating excavator **114** may be—“For Ticket No. 2645134, the locate technician is on site at dig area on Friday, Dec. 5, 2008 at 10:05 AM.”

“Ticket marked,” which means that locate technician has completed the locate operation. However, a ticket approval process may be pending. For example, the notification that is transmitted to the originating excavator **114** may be—“Ticket No. 2645134 is marked on Friday, Dec. 5, 2008 at 11:46 AM and is pending approval.”

“Ticket approved,” which means that the locate operation associated with the ticket has been certified by supervisors and/or quality control personnel of locate parties **130** to meet a certain quality standard. The certification process may be via ticket approval application **224** of central server **212**. For example, the notification that is transmitted to the originating excavator **114** may be—“Ticket No. 2645134 is approved on Friday, Dec. 5, 2008 at 12:35 PM.” Since approval of the ticket may be the last step of the locate process, such a notification may also include a positive indication that the locate operation is complete and/or that the excavator may proceed with excavation activities.

“Locate details,” which means that detailed information about the locate operation may be transmitted to excavators **114**, such as information generated by locate personnel **134** using EM application **232** of onsite computers **214**.

“Locate operation delayed,” which means that the locate operation has been delayed for some reason (e.g., rain).

“Ticket expired” or “Ticket about to expire,” which means that the specified time frame for the locate operation has or is about to expire without the locate operation having been completed.

“Locate Request Submitted,” which means that the locate request has been submitted to the one-call center. This notification may include, for example, the name of the person who originated the locate request and/or the locate party or parties who will be responsible for performing the locate operation.

The types of notifications listed above are merely exemplary, and it should be appreciated that many additional types of notifications are possible. For example, notifications may have a high degree of specificity. Rather than simply electing to be notified when a locate technician is on-site, a user may elect to be notified when the locate technician has turned on his marking device, begun marking, changed paint colors, etc. A notification can also relate to a planned event so that, for example, an excavator may be informed when the locate technician plans to be on-site so that the excavator can meet with the locate technician at the specified time.

Examples of methods by which notifications may be automatically received by excavators **114** may include, but are not limited to, email, SMS text message, instant message, phone call (such as from an interactive voice response (IVR) system), pager message, and rich site summary (RSS) feed, which is a family of Web feed formats used to publish frequently updated works, such as blog entries, news headlines, audio, and video, in a standardized format. The notifications may optionally include image(s) or video. For example, an image showing details of the completed locate and/or marking activities may be transmitted to an excavator **114** as an attachment to an email or text message.

Alternatively, an authorized excavator **114** may query the status of certain locate requests by, for example, accessing a secure web site. For example, text-based notifications (e.g., emails or SMS text messages) received by excavators **114** may include a link or reference to a web site, such as one maintained by a locate service provider, that includes information on the status of a locate request and/or locate operation. By accessing the web site, such as by clicking on the hyperlink in an email, the excavator **114** may view periodically updated, recent, and/or real-time information on the status of a locate request and/or locate operation.

Such a web site may display an image showing details of a locate operation and/or a corresponding electronic representation of the locate operation. Further, such a web site may display aggregate information, such that an excavator **114** can view information supplied by multiple locate technicians or parties and/or information relating to a multiple submitted locate requests or multiple dig areas. According to one illustrative example, an excavator **114** may receive an email with a notification that a locate party has completed its locate activities, along with a link to a web site that includes an image and/or electronic representation showing details of the locate activities completed by that locate party as well as the locate activities previously completed by other locate parties.

In some instances, it may be desirable for a single entity or a limited number of entities to retain control over the status or other information relating to a locate operation. For example, it may be desirable for the entity that provides access to an electronic manifest (EM) creation application (e.g., the EM application **246**) and has initial control of one or more created EM images (e.g., EM images **248**) to retain control of such images. One potential benefit of retaining control of the EM

image(s) once created is avoiding unauthorized edits to or unauthorized use of the image(s).

According to one example, a “controlling” entity that provides access to an EM creation application (e.g., the EM application **246**) retains control of one or more created images, but allows other entities to access the images in some instances in a limited manner. For example, the controlling entity may provide a link (e.g., a hyperlink) to one or more EM images (e.g., via an e-mail) or otherwise provide an interface allowing the EM image(s) to be accessed (e.g., via a customized or proprietary image viewing application). Such a link may have a pre-established expiration date, such that clicking on the link will not access the EM image(s)/web page after the specified expiration date. To maintain the integrity of the EM image(s), the application providing access to the EM image(s) may prohibit copying of, saving of, or writing to the images. For example, the EM image may be viewable only using a corresponding image file viewer that allows limited access to the EM image. In particular, copy, save and/or write access to the EM image may be prohibited. In these and other respects discussed below, one or more EM image files may be stored and/or transmitted as “limited access files.”

The EM image may, for example, be transmitted to a party associated with the at least one underground facility with the corresponding image file viewer so that the party may view the EM image. For example, an executable file comprising the EM image and image file viewer may be transmitted (e.g., a customized image viewer may be transmitted to one or more onsite computers). Alternatively, the image file viewer may be downloaded/installed separately, e.g., from a web site of the controlling entity, or the EM image may be viewed using an image file viewer stored and executed on a server of the controlling entity.

In one implementation, the controlling entity may allow access to the EM image(s) only when a certain condition or conditions are met. For example, the controlling entity may require a password protected log-in procedure for access to the EM image(s). In particular, the image file viewer may require a password to permit access to the EM image. As another example, the controlling entity may require acceptance of certain terms and/or conditions to permit access to the EM image. According to one implementation, the image file viewer may be programmed to require an indication of acceptance of terms and/or conditions prior to permitting access to the EM image. According to yet another example, the controlling entity may charge a fee for permitting a third party to access one or more EM images, such as a per-transaction fee or a subscription fee.

To prevent access to the EM image unless or until a condition or conditions are met, the EM image may be encrypted and require decryption to be readable. A corresponding image file viewer may be required to decrypt the EM image. The EM image and/or the corresponding image file viewer may also or alternatively be proprietary, and may have a format specific to the controlling entity. The image file viewer may optionally be programmed to determine whether an updated version of the image file viewer is available. For example, the image file viewer may interrogate information associated with the EM image to determine a corresponding version of the image file viewer. If an updated version is found, the viewer may prompt the user to upgrade the application or otherwise facilitate an update.

The EM image may be transmitted in a variety of different formats. For example, the EM image may be transmitted as an image including locate mark indicators thereon. Alternatively, the EM image may be transmitted as a base image with associated metadata and/or a separate file (e.g., an XML file)

including information that allows the locate mark indicators to be rendered on or in connection with the base image. Such information may comprise geographic coordinates specifying the locate mark indicators to be displayed on the base image. The information included in the metadata and/or separate file may also specify access permissions for the locate mark indicators. For example, in the case where the information that allows locate mark indicators to be rendered relates to a plurality of dig sites, locate mark information for one or more dig sites may have restricted access such that the corresponding locate mark indicators are not rendered unless certain access conditions are met.

While the status information described above as being stored and/or transmitted as a “limited access file” corresponds to one or more EM images, the same principles may be applied to other types of image-based or non-image files to limit the access to the status information.

In some implementations, an acknowledgement is required from the recipient of a positive response notification that he or she has received and/or reviewed the information included in the notification. Thus, a return receipt may be solicited from the recipient of a notification in the form of an automatic confirmation that the notification was opened or received, for example by an automatic return email or text message. A notification may also be automatically generated when the notification recipient logs in to a web site or otherwise accesses information via a web site. Alternatively, a recipient-generated confirmation may be solicited. For example, the recipient may be requested to reply to a text or email with a certain word or code when a notification is received, accessed and/or reviewed.

Turning again to FIG. 2, one-call centers **120** may process locate requests that may be submitted by excavators **114**. More specifically, a certain one-call center **120** may pass locate requests to central server **222** of a certain locate party **130**. The locate requests may include corresponding VWL images that are generated by excavators **114**, who originate the locate requests. Subsequently, workforce management application **254** of central server **222** may be used to process the locate requests that are received from one-call centers **120** and dispatch the locate requests to locate personnel **134** that are in the field. Locate personnel **134** are able to receive locate requests (along with any VWL images) that are dispatched by workforce management application **222** via their respective onsite computers **220** or locate personnel devices **218**.

Once received at a certain onsite computer or device, a certain locate personnel **134** may view the locate request and may view the corresponding VWL image via the VWL viewer **230**. VWL viewer **230** may be any graphical viewer application that is capable of reading and displaying the VWL images. Alternatively, VWL images may be read into and viewed by an “electronic manifest” (EM) application **246**. EM application **246** may be a drawing application, which, in underground facility locate applications, may be used by locate personnel **134** as a marking tool for documenting the locate operation. FIG. 4 illustrates an exemplary locate personnel device **218** according to one aspect of the present invention, which supports an EM application **246** to display an image of a geographic area including a dig area and facilitate adding one or more indicators to the displayed image representing one or more physical locate marks applied to the dig area to indicate a presence or an absence of one or more underground facilities, thereby forming EM image **248**.

More specifically, EM application **246** may be used by locate personnel **134** to add markings (one or more “locate mark indicators”) to an input image of a geographic area including the dig area, so as to graphically indicate (digitally

represent in an electronic image) the work performed in the locate operation. The input image may be received from, for example, the image server **210** that may be associated with a party that provides images for a fee. In some implementations, the input image may be an aerial image **230**. EM application **246** may superimpose over or otherwise display these markings on the displayed input image and save them as, for example, an EM image **248**. The markings may include lines, drawing shapes, shades, points, symbols, coordinates, data sets, or other indicators to graphically depict the work performing in the locate operation. The EM image may then be associated with a marked ticket that may be transmitted to central server **222**.

The resulting EM image generated by EM application **246** may show, for example, the original virtual white lines **260** from the original VWL image; a mark-up of one or more types of facilities, the presence or absence of which have been determined during the locate operation, and a mark-up of one or more environmental landmarks. An environmental landmark may be any location specified by any means that is used or can be used as a reference point for measurement or orientation. Examples of environmental landmarks may include, but are not limited to, a tree, a curb, a driveway, a utility pole, a fire hydrant, a storm drain, a pedestal, a water meter box, a manhole lid, a building structure, a light post, or a set of global positioning system coordinates.

Alternatively, EM application **246** may read in information about the locate operation from a data-enabled electronic marking device **216** that is used during the locate operation. The data-enabled electronic marking device may, for example, be based on the marking devices that are described with reference to U.S. Patent Application publication no. 2008-0245299-A1, filed Apr. 4, 2007, entitled "Marking system and method," and U.S. Patent Application publication no. 2008-0228294-A1, filed Mar. 13, 2007, entitled "Marking system and method with location and/or time tracking," which publications are incorporated by reference herein in their entirety.

By way of example, the marking device **216** may include certain software components and/or applications, such as, but not limited to, a device health component, a marking data algorithm **244**, a map viewer application, ticket processing software, a speech synthesis component, and an operating mode controller that allows the marking device to operate in multiple modes, such as, but not limited to, marking mode, landmark identification mode, solo mode, and group mode. Additionally, the marking device **216** may include certain input devices **240**, such as, but not limited to, a marking material detection mechanism, a location tracking system, a temperature sensor, a humidity sensor, a light sensor, a compass, an inclinometer, an accelerometer, a digital camera, and an audio recorder.

Subsequently, the information from the data-enabled electronic marking device **216** may then be rendered into the graphical depiction of the work performed in the locate operation. More specifically, the information from the data-enabled electronic marking device may be processed by EM application **246** and a graphical depiction of the locate operation may be superimposed over or otherwise displayed on the input image and saved as the EM image **248**. Again, the EM image **248** may then be associated with a marked or completed ticket **250** that may be transmitted to central server **222**. When excavators **114** select "Locate information" as one type of notification in their excavator profiles, the source of this information may be, for example, the marked up EM images **248**.

In some locate operations, no underground facilities are determined to be present in a designated dig area. Such locate

operations are sometimes referred to as "clears." In some implementations of the inventive concepts discussed herein, the EM application **246** may nonetheless be employed to provide an electronic record of a "clear;" more specifically, although no locate mark indicators may be added to an input image (because there are no physical locate marks to digitally represent), the EM application may be employed to provide other information associated with the "clear" locate operation (e.g., a timestamp of when the locate operation was performed, an identifier for a technician or locate party performing the locate operation, a text address or other geographical identifier for the dig area, etc.) and this other information may be associated with the input image (e.g., as a separate data set linked to the input image, as metadata, a combined file of image and non-image data, etc.) to create a searchable electronic record that may be consulted (e.g., forward to an excavator or other party as part of a notification) to verify that the locate operation was indeed completed, even though no underground facilities were found.

Workforce management client of onsite computers **220** and/or locate personnel devices **218** may be a counterpart to workforce management application **254** of central server **222**. That is, workforce management client may be used to transmit the current status of locate operations from onsite computers/locate personnel devices to workforce management application **254**. During locate operations, workforce management application **254** monitors status and other information returned from workforce management client and/or ticket approval application **256** of central server **222**. Workforce management client exposes this information to the informed excavator application **258**. As discussed above, certain status conditions may include, but are not limited to, "ticket received" by locate party **130**, "ticket dispatched," "locate operation in progress," "ticket marked," "ticket approved," "ticket closed," and the like.

Ticket approval application **256** of central server **222** may be used for collecting data associated with locate operations that are performed in the field and by which quality control functions may be performed. In one example, one or more approvers (not shown) are associated with ticket approval application **224**. The approvers may be, for example, any personnel associated with the underground facility locate service provider, such as, but not limited to, the supervisors of locate technicians that are dispatched into the field, quality control supervisors, and/or any management personnel.

Ticket approval application **256** may use the information found in the of EM images **248** of marked or completed tickets **250** that are returned from onsite computers **220**/locate personnel devices **218** in order to rapidly assess the quality of the work performed in the field. This assessment may be by visual inspection of each marked ticket by one or more approvers and/or by analyzing the information of each marked ticket against one or more facilities maps (not shown) that correspond to the geographic location associated with marked ticket. Ticket approval application **256** may be a source of locate operation status information that may be monitored by informed excavator application **258**.

FIG. 5 illustrates various elements of an informed excavator application **258** for providing information regarding the status of locate operations, according to one aspect of the present invention. According to various aspects, for each locate request received at central server **222**, informed excavator application **258** reads in information from excavator profiles **512** in order to determine the preferred types and methods of notification entered by the originating excavator **114**. During locate operations, informed excavator application **258** monitors status and other information about locate

operations that may be provided by workforce management application 254 and/or ticket approval application 256 via ticket monitoring component 514. In so doing, informed excavator application 258 automatically generates notifications, via notification component 516, according to information in the excavator profiles 512 that are associated with the originating excavators 114.

Referring to FIG. 6, a flow diagram of an example of a method 600 of operation of informed excavator system 200, and more particularly the informed excavator application 256, is presented. Method 600 may include, but is not limited to, the following steps, which are not limited to any order.

At step 610, excavators 114 access informed excavator application 256 and enter profile information. More specifically, excavators 114 may log into the informed excavator application 256 and enter profile information, such as information about their identity and the preferred types of notifications (e.g., Locate technician dispatched to dig area, Locate technician on site at dig area, Ticket marked, Ticket approved, Locate details) and preferred methods of notifications (e.g., email, SMS text message, phone call, pager message).

At step 612, the current status of locate requests is monitored. For example, status and/or other information is returned from onsite computers/locate personnel devices to workforce management application 254 and/or ticket approval application 256 of central server 222. Informed excavator application 258 queries workforce management application 254 and/or ticket approval application 256 for the status and/or other information. Certain status conditions may include, but are not limited to, ticket received, ticket dispatched, locate operation in progress, ticket marked, ticket approved, ticket closed, and the like.

At step 614, notification component 516 of informed excavator application 258 generates notifications to excavators 114 based on the current status of locate requests and then transmits the notifications based on the types and methods of notifications that are selected in the respective excavator profiles 512 of excavators 114.

In one example, when the types of notifications selected in the profile information is "All types of notifications," the preferred method of notification is "SMS text message," and the current status is "ticket dispatched," a "Locate technician dispatched to dig area" notification may be automatically transmitted to the excavator 114. For example, a text message may be generated and transmitted to the cell phone of the excavator 114 as follows—"For Ticket No. 2645134, locate technician has been dispatched to dig area on Friday, Dec. 5, 2008 at 9:30 AM." Continuing the example, when the current status changes to "ticket marked," a "Ticket marked" notification may be automatically transmitted to the excavator 114. For example, a text message may be generated and transmitted to the cell phone of the excavator 114 as follows—"Ticket No. 2645134 is marked on Friday, Dec. 5, 2008 at 11:46 AM."

In another example, when the types of notifications selected in the profile information is "Ticket closed" only and the preferred method of notification is a phone call, only when the current status is "ticket closed" will the excavator 114 receive a phone call notification. For example, when the current status is "ticket closed," the excavator 114 may receive a phone call directly from the locate technician who performed the locate operation to inform the excavator 114 that the ticket of interest has been closed on a certain date and time. Alternatively, the excavator 114 may receive a phone call from a certain locate party 130 and/or one-call center 120 in order to inform the excavator 114 that the ticket of interest has been closed. The phone call may be a manually generated phone

call from personnel of a certain locate party 130 and/or one-call center 120. Alternatively, the phone call is automatically initiated via an IVR system.

At step 616, notification component 516 of informed excavator application 258 transmits detailed information about locate operations to the excavators. More specifically, when "Locate information" is selected in the excavator profile, detailed information about the locate operation of a certain ticket may be transmitted by notification application 226 to the excavator 114 who originated the locate request. For example, the excavator 114 may receive the following information about a certain locate operation:

- (1) the original VWL image and/or series of VWL images;
- (2) an electronic copy of the completed ticket, which may include a status code indicating whether or not the locate operation was completed;
- (3) the corresponding EM image 248 that was generated by locate personnel 134 via EM application 246 and that shows various details of the locate operation;
- (4) the corresponding electronic representation of the locate operation, which may include, e.g., the locate technician's name, the locate equipment used, the diagnosis software used on the locate equipment, the locate technician's history at the site, and a description of the conditions in and/or around the dig area (e.g., whether there is a fence and the number of houses or other structures present);
- (5) an assessment of the risk of excavation in the dig area (e.g., a descriptive or numeric risk assigned based on such factors as whether there is a buried line, a high pressure gas line, or other high risk condition within or near the dig area); and
- (6) any combinations thereof.

Referring to FIG. 7, a flow diagram of an example of a method 700 of using informed excavator system 200 is presented. Method 700 may include, but is not limited to, the following steps, which are not limited to any order.

At step 710, a locate request that includes a VWL image and/or a project ticket that includes a series of VWL images of the proposed dig area is submitted to a one-call center. More specifically, a certain excavator 114 may use VWL application to generate a VWL image and/or series of VWL images and then submit a locate request and/or project ticket, respectively, to a certain one-call center 120.

At step 712, the locate request that includes a VWL image and/or a project ticket that includes a series of VWL images is passed from a certain one-call center 120 to a certain locate party 130. More specifically, the locate request that is generated in step 710 is transmitted from the one-call center 120 to central server 212 of a certain locate party 130 that is to perform the locate operation.

In various exemplary implementations, a locate request ticket provided to a locate party 130 may include one or both of image data and non-image data associated with the dig area. As discussed above, the image data may include at least one marked-up image of a geographic area including the dig area, wherein the marked-up image(s) includes at least one dig area indicator (e.g., virtual white lines) to provide an indication of the dig area. Again, the dig area indicator(s) (e.g., virtual white lines) typically are placed on the image (e.g., by the excavator or one-call center) before the ticket is received by the locate party. In some implementations, the dig indicator(s)/virtual white lines may be added to the image at a first user location remote from the dig area and/or without acquiring geographic coordinates for the dig area indicator(s). Examples of non-image data that may be included in or otherwise associated with the locate request

ticket may include, but are not limited to, one or more of the following: a text description of the dig area; a plurality of geographic coordinates associated with the at least one dig area indicator; an address or a lot number of at least one property within which the dig area is located; a street intersection in a vicinity of the dig area; a date and/or time of day for an excavation of the dig area; a first identifier associated with an excavator to perform the excavation activities; a second identifier associated with at least one environmental landmark in the vicinity of the dig area; and a ticket identifier for the locate request ticket. Any of the image data or non-image data associated with the locate request ticket may be provided to one or more parties in connection with one or more notifications regarding the status of locate operations, as discussed in greater detail below.

At step 714, workforce management application 254 assigns the locate request that is generated in step 712 to a certain locate personnel 134, such as a locate technician, and the locate technician is dispatched to dig area.

At step 716, the originating excavator 114 may be notified by informed excavator application 258, which is monitoring the status of the locate request, that the locate technician is in route to the dig area. For example, notification component 516 may generate a "Locate technician dispatched to dig area" notification, which may be received by the excavator 114 by the notification method selected in his/her excavator profile. Receiving this notification allows the excavator 114 the opportunity to proceed to the dig area in the event that he/she wishes to discuss any details of the planned excavation with locate personnel 134, in order to avoid any misunderstanding and/or miscommunications about the locate operation and, thereby, reduce the risk of damage to underground facilities during excavation.

At step 718, the locate technician that was dispatched in step 714 arrives at dig area.

At step 720, the originating excavator 114 may be notified by informed excavator application 258, which is monitoring the status of the locate request, that the locate technician has arrived at the dig area. For example, notification component 516 may generate a "Locate technician on site at dig area" notification, which may be received by the excavator 114 by the notification method selected in his/her excavator profile. Again, receiving this notification allows the excavator 114 the opportunity to proceed to the dig area in the event that the excavator 114 wishes to discuss any details of the planned excavation with the locate personnel.

At step 722, the locate technician performs the locate operation at the dig area according to the instructions of the locate request to which he/she has been assigned. As noted earlier, it should be appreciated that during a given locate operation, underground facilities may or may not be found at the dig area, but that given either a presence or absence of facilities, the performance of the locate operation, including an inspection of the dig area, may be verified as completed by the locate technician.

In particular, at step 724, the locate technician completes the locate operation and the ticket status is updated accordingly. For example, a "ticket marked" status may be communicated by workforce management client of onsite computer/locate personnel device to workforce management application 254.

At step 726, the excavator 114 may be notified by informed excavator application 258, which is monitoring the status of the locate request, that the ticket is marked, which means that the locate operation has been completed by the locate technician, but may be pending approval. More specifically, notification component 516 may generate a "Ticket marked (but

pending approval)" notification. This notification may be received by the excavator 114 by the notification method selected in his/her excavator profile.

At decision step 728, it is determined whether the ticket of the current locate operation is to be subjected to a quality control process. If yes, method 700 may proceed to step 730. If no, method 700 may proceed to step 732.

At step 730, the ticket of the current locate operation is processed by ticket approval application 256. If the ticket passes the quality control process satisfactorily, method 700 may proceed directly to step 732 with no further action. If the ticket does not pass the quality control process satisfactorily, quality control action is taken until the ticket passes the quality control process satisfactorily, method 700 may then proceed to step 732.

At step 732, the ticket of the current locate operation is classified as ticket approved. In this way, the quality of the locate operation is certified.

At step 734, the originating excavator 114 may be notified by informed excavator application 258, which is monitoring the status of the locate request, that the ticket is approved. For example, notification component 516 may generate a "Ticket approved" notification, which may be received by the excavator 114 by the notification method selected in his/her excavator profile. Receiving this notification allows the excavator 114 the opportunity to proceed to the dig area to perform the planned excavation with little or no delay from the date and time at which the locate operation was completed.

At step 736, the originating excavator 114 may receive the original VWL image plus other information about the locate operation. More specifically, when "Locate information" is selected in the excavator profile, detailed information about the locate operation of a certain ticket (e.g., one or both of image data and non-image data, some examples of which were discussed above) may be transmitted by informed excavator application 258 to the originating excavator 114. For example, the excavator 114 may receive (1) the original VWL image and/or series of VWL images; (2) an electronic copy of the completed ticket (including image and/or non-image data); (3) the corresponding EM image that was generated via EM application 246 and that shows details of the locate operation (including "clears" in which an image is not necessarily marked-up with locate mark indicators, but other important non-image data is associated with the EM image), including an EM image that may also show the original virtual white lines; (4) the corresponding electronic representation of the locate operation (e.g., non-image data or information without a marked-up image component); (5) an assessment of the risk of excavation in the dig area (e.g., a descriptive or numeric risk assigned based on such factors as whether there is a buried line, a high pressure gas line, or other high risk condition within or near the dig area); and (6) any combinations thereof.

At step 738, having detailed knowledge of the locate operation from the information provided in step 736, the excavator 114 may perform the planned excavation of the dig area with increased confidence, which has the result of reducing the risk of damage to underground facilities during excavation.

Referring again to FIGS. 1 through 7, informed excavator system 200 and the associated methods 600 and 700 of the present disclosure are not limited to providing status notifications and/or information about locate operations to personnel (e.g., excavators 114) of excavation companies only. Status notifications and/or information about locate operations may be provided to any entity associated with locate operations, such as, but not limited to, those included in informed excavator system 200.

Referring again to FIG. 2, the functionality of the informed excavator application 258 may be combined with the functionality of VWL application 232 or 234 so that a single interface can be used not only to manage the communication of status notifications and/or information about locate operations, but also to submit one or more VWL images and/or locate requests, as described herein. More particularly, an excavator may use a single interface to manage the communication of status notifications and/or information about locate operations and submit VWL images and/or locate requests, and efficiently perform these tasks during a single login session or the like.

FIG. 8 shows an exemplary method 800 of using an excavator information application that combines the functionality of the informed excavator application 258 and VWL application 232 or 234. The excavator information application may be stored on central server 222 as discussed in connection with the informed excavator application 258, on excavator devices 212 as discussed in connection with VWL application 232, on a computing system associated with one-call center 120 as discussed in connection with VWL application 234, or some other suitable location(s). Method 800 may include, but is not limited to, the following steps, which need not be performed in the order shown.

At step 810, an excavator accesses the excavator information application and enters profile information. This step is analogous to step 610 of FIG. 6 and may involve the same actions described in connection therewith.

At step 812, the excavator enters locate information and/or generates a VWL image. The excavator information application may include the functionality of VWL application 232 or 234, such that the locate information may be entered and the VWL image may be generated in the manner described in connection with those applications. For example, a VWL image 238 may be created using the VWL application 232 shown in FIG. 3. Locate information, such as information specifying a dig area, may be input by an excavator using a marking tool such as the dig area marking tool of VWL application 232, a form with data fields, or another means of data input. The locate information and/or VWL image may be submitted to a one-call center as part of a locate request. For example, the excavator may submit a locate request without a VWL image. If a VWL image is required, the one-call center may use the information in the locate request submitted by the excavator to generate a VWL image. Alternatively, the excavator may submit the locate information and/or VWL image to a one-call center pursuant to an already submitted locate request, or in advance of a locate request not yet submitted.

Steps 814, 816 and 818 may proceed as discussed in connection with analogous steps 612, 614 and 616 of FIG. 6. In particular, the excavator information application may monitor the status of a locate operation, generate and provides notification(s) to an excavator based on the status of the locate operation and profile information entered in step 810, and optionally provide detailed information about the locate operation to the excavator in the same manner as the informed excavator application 258 discussed herein.

In summary and referring again to FIGS. 1 through 7, informed excavator system 200 and the associated methods 600 and 700 of the present disclosure may provide the following benefits, which are otherwise not present in current processes:

Improved communications infrastructure between excavators and locate service providers. This may be accomplished via the exchange of information electronically between entities associated with the informed excavator system 200;

Better ways of communicating the status of locate operations to excavators in a timely manner (i.e., substantially real time), which may reduce, preferably entirely eliminate, the uncertainty as to whether the locate operation is complete. This may be accomplished via notification request application 220 of application server 210 and notification application 226 of central server 212, the combination of which facilitate notifications that are transmitted to excavators;

Information to the excavator about the locate operation that substantially improves the confidence of the excavator that the locate operation has been performed satisfactorily prior to beginning the excavation activities, which may reduce, preferably entirely eliminate, the risk of damage to underground facilities. This may be accomplished via the locate operation certification process of ticket approval application 224 of central server 212. Further, this may be accomplished by transmitting details (e.g., EM images from EM application 232) about the locate operation to excavators, and

Improved project planning, management, and/or tracking with respect to locate operations. This may be accomplished via the use of project component 218 of VWL application 216, which may be used to generate a series of VWL images with respect to project tickets that are ongoing.

Conclusion

While various inventive embodiments have been described and illustrated herein, those of ordinary skill in the art will readily envision a variety of other means and/or structures for performing the function and/or obtaining the results and/or one or more of the advantages described herein, and each of such variations and/or modifications is deemed to be within the scope of the inventive embodiments described herein. More generally, those skilled in the art will readily appreciate that all parameters, dimensions, materials, and configurations described herein are meant to be exemplary and that the actual parameters, dimensions, materials, and/or configurations will depend upon the specific application or applications for which the inventive teachings is/are used. Those skilled in the art will recognize, or be able to ascertain using no more than routine experimentation, many equivalents to the specific inventive embodiments described herein. It is, therefore, to be understood that the foregoing embodiments are presented by way of example only and that, within the scope of the appended claims and equivalents thereto, inventive embodiments may be practiced otherwise than as specifically described and claimed. Inventive embodiments of the present disclosure are directed to each individual feature, system, article, material, kit, and/or method described herein. In addition, any combination of two or more such features, systems, articles, materials, kits, and/or methods, if such features, systems, articles, materials, kits, and/or methods are not mutually inconsistent, is included within the inventive scope of the present disclosure.

The above-described embodiments can be implemented in any of numerous ways. For example, the embodiments may be implemented using hardware, software or a combination thereof. When implemented in software, the software code can be executed on any suitable processor or collection of processors, whether provided in a single computer or distributed among multiple computers.

Further, it should be appreciated that a computer may be embodied in any of a number of forms, such as a rack-mounted computer, a desktop computer, a laptop computer, or a tablet computer. Additionally, a computer may be embedded in a device not generally regarded as a computer but with

suitable processing capabilities, including a Personal Digital Assistant (PDA), a smart phone or any other suitable portable or fixed electronic device.

Also, a computer may have one or more input and output devices. These devices can be used, among other things, to present a user interface. Examples of output devices that can be used to provide a user interface include printers or display screens for visual presentation of output and speakers or other sound generating devices for audible presentation of output. Examples of input devices that can be used for a user interface include keyboards, and pointing devices, such as mice, touch pads, and digitizing tablets. As another example, a computer may receive input information through speech recognition or in other audible format.

Such computers may be interconnected by one or more networks in any suitable form, including a local area network or a wide area network, such as an enterprise network, and intelligent network (IN) or the Internet. Such networks may be based on any suitable technology and may operate according to any suitable protocol and may include wireless networks, wired networks or fiber optic networks.

FIG. 9 shows an illustrative computing device, e.g., computer 900, that may be used at least in part to implement any one or more of the applications described herein. In the example shown, the illustrative computer 900 is used to implement the excavator information application 902 described in connection with FIG. 8. For example, the computer 900 comprises a memory 910, one or more processing units 912, one or more communication interfaces 914, one or more display units 916, and one or more user input devices 918. The memory 910 may comprise any computer-readable media, and may store computer instructions for implementing the excavator information application 902. The processing unit(s) 912 may be used to execute the instructions. The communication interface(s) 914 may be coupled to a wired or wireless network, bus, or other communication means and may therefore allow the computer 900 to transmit communications to and/or receive communications from other devices. The display unit(s) 916 may be provided, for example, to allow a user to view various information in connection with execution of the instructions. The user input device(s) 918 may be provided, for example, to allow the user to make manual adjustments, make selections, enter data or various other information, and/or interact in any of a variety of manners with the processor during execution of the instructions.

FIG. 10 illustrates an exemplary graphical user interface (GUI) that may be used in connection with providing inputs to the excavator information application, according to one embodiment of the present invention. The GUI 1000 may comprise, for example, a liquid crystal display or other display screen to display information, and may have a touch-sensitive screen and/or be associated with one or more other user input devices to receive user inputs. In the exemplary interface shown in FIG. 10, a checklist of notification types 1002 and a checklist of notification communication methods 1004 are displayed. To establish a user profile, a user may check one or more desired notification types 1002 and one or more desired notification communication methods 1004 in the displayed checklists. The selected notification type(s) and/or notification communication method(s) may be saved as a user profile, which may include default preferences for the user. At the bottom of the screen, the user is prompted to indicate, via check box and prompt 1006, whether the user would like to submit a locate request and/or generate a VWL image. If the user indicates such interest by selecting the check box, the GUI will display an interface such as the VWL application interface shown in FIG. 3 so that the user may

generate a VWL image and/or submit a locate request as discussed in connection with that application. The locate request may include a VWL image and/or a data set relating to a VWL image, although such information may not be necessary.

In the example described above, the user who establishes a user profile using the GUI 1000 of FIG. 10 may be an excavator or other party associated with providing a locate request. However, a user profile may be established by other parties, such as a facility owner, a locate party, a party informed by regulatory requirements, contract requirements, or other requirements for such notifications, and/or some combination of the foregoing. In this way, a facility owner, locate party, and/or regulatory body may dictate the positive response notifications received by a party associated with providing a locate request (e.g., an excavator) and/or how such positive notifications are received by the party. For example, a particular facility owner may specify preferred notification type(s) and notification communication method(s) for all locate and/or marking operations that involve their facility, per agreement with a locate party. Further, a user profile may be established without using the GUI described in connection with FIG. 10. For example, the excavator information application may receive inputs from a file that includes information (e.g., contract and/or regulatory requirements) that may be used to generate the user profile.

The various methods or processes outlined herein may be coded as software that is executable on one or more processors that employ any one of a variety of operating systems or platforms. Additionally, such software may be written using any of a number of suitable programming languages and/or programming or scripting tools, and also may be compiled as executable machine language code or intermediate code that is executed on a framework or virtual machine.

In this respect, various inventive concepts may be embodied as a computer readable storage medium (or multiple computer readable storage media) (e.g., a computer memory, one or more floppy discs, compact discs, optical discs, magnetic tapes, flash memories, circuit configurations in Field Programmable Gate Arrays or other semiconductor devices, or other non-transitory medium or tangible computer storage medium) encoded with one or more programs that, when executed on one or more computers or other processors, perform methods that implement the various embodiments of the invention discussed above. The computer readable medium or media can be transportable, such that the program or programs stored thereon can be loaded onto one or more different computers or other processors to implement various aspects of the present invention as discussed above.

The terms "program" or "software" are used herein in a generic sense to refer to any type of computer code or set of computer-executable instructions that can be employed to program a computer or other processor to implement various aspects of embodiments as discussed above. Additionally, it should be appreciated that according to one aspect, one or more computer programs that when executed perform methods of the present invention need not reside on a single computer or processor, but may be distributed in a modular fashion amongst a number of different computers or processors to implement various aspects of the present invention.

Computer-executable instructions may be in many forms, such as program modules, executed by one or more computers or other devices. Generally, program modules include routines, programs, objects, components, data structures, etc. that perform particular tasks or implement particular abstract

data types. Typically the functionality of the program modules may be combined or distributed as desired in various embodiments.

Also, data structures may be stored in computer-readable media in any suitable form. For simplicity of illustration, data structures may be shown to have fields that are related through location in the data structure. Such relationships may likewise be achieved by assigning storage for the fields with locations in a computer-readable medium that convey relationship between the fields. However, any suitable mechanism may be used to establish a relationship between information in fields of a data structure, including through the use of pointers, tags or other mechanisms that establish relationship between data elements.

Also, various inventive concepts may be embodied as one or more methods, of which an example has been provided. The acts performed as part of the method may be ordered in any suitable way. Accordingly, embodiments may be constructed in which acts are performed in an order different than illustrated, which may include performing some acts simultaneously, even though shown as sequential acts in illustrative embodiments.

All definitions, as defined and used herein, should be understood to control over dictionary definitions, definitions in documents incorporated by reference, and/or ordinary meanings of the defined terms.

The indefinite articles “a” and “an,” as used herein in the specification and in the claims, unless clearly indicated to the contrary, should be understood to mean “at least one.”

The phrase “and/or,” as used herein in the specification and in the claims, should be understood to mean “either or both” of the elements so conjoined, i.e., elements that are conjunctively present in some cases and disjunctively present in other cases. Multiple elements listed with “and/or” should be construed in the same fashion, i.e., “one or more” of the elements so conjoined. Other elements may optionally be present other than the elements specifically identified by the “and/or” clause, whether related or unrelated to those elements specifically identified. Thus, as a non-limiting example, a reference to “A and/or B”, when used in conjunction with open-ended language such as “comprising” can refer, in one embodiment, to A only (optionally including elements other than B); in another embodiment, to B only (optionally including elements other than A); in yet another embodiment, to both A and B (optionally including other elements); etc.

As used herein in the specification and in the claims, “or” should be understood to have the same meaning as “and/or” as defined above. For example, when separating items in a list, “or” or “and/or” shall be interpreted as being inclusive, i.e., the inclusion of at least one, but also including more than one, of a number or list of elements, and, optionally, additional unlisted items. Only terms clearly indicated to the contrary, such as “only one of” or “exactly one of,” or, when used in the claims, “consisting of,” will refer to the inclusion of exactly one element of a number or list of elements. In general, the term “or” as used herein shall only be interpreted as indicating exclusive alternatives (i.e. “one or the other but not both”) when preceded by terms of exclusivity, such as “either,” “one of,” “only one of,” or “exactly one of.” “Consisting essentially of,” when used in the claims, shall have its ordinary meaning as used in the field of patent law.

As used herein in the specification and in the claims, the phrase “at least one,” in reference to a list of one or more elements, should be understood to mean at least one element selected from any one or more of the elements in the list of elements, but not necessarily including at least one of each and every element specifically listed within the list of ele-

ments and not excluding any combinations of elements in the list of elements. This definition also allows that elements may optionally be present other than the elements specifically identified within the list of elements to which the phrase “at least one” refers, whether related or unrelated to those elements specifically identified. Thus, as a non-limiting example, “at least one of A and B” (or, equivalently, “at least one of A or B,” or, equivalently “at least one of A and/or B”) can refer, in one embodiment, to at least one, optionally including more than one, A, with no B present (and optionally including elements other than B); in another embodiment, to at least one, optionally including more than one, B, with no A present (and optionally including elements other than A); in yet another embodiment, to at least one, optionally including more than one, A, and at least one, optionally including more than one, B (and optionally including other elements); etc.

In the claims, as well as in the specification above, all transitional phrases such as “comprising,” “including,” “carrying,” “having,” “containing,” “involving,” “holding,” “composed of,” and the like are to be understood to be open-ended, i.e., to mean including but not limited to. Only the transitional phrases “consisting of” and “consisting essentially of” shall be closed or semi-closed transitional phrases, respectively, as set forth in the United States Patent Office Manual of Patent Examining Procedures, Section 2111.03.

What is claimed is:

1. An apparatus for providing information regarding a locate and/or marking operation, the apparatus comprising:
 - a communication interface;
 - a memory to store processor-executable instructions; and
 - a processing unit communicatively coupled to the communication interface and the memory, wherein upon execution of the processor-executable instructions by the processing unit, the processing unit:
 - controls the communication interface to receive user input regarding a preferred notification type and/or a preferred notification communication method for at least one notification indicating a status of the locate and/or marking operation and/or providing information relating to the performance of the locate and/or marking operation, the locate and/or marking operation comprising detecting and/or marking, in response to at least one locate request ticket, a presence or an absence of at least one underground facility within a dig area, wherein at least a portion of the dig area is planned to be excavated or disturbed during excavation activities;
 - generates the at least one notification based at least in part on the preferred notification type and/or the preferred notification communication method; and
 - further controls the communication interface and/or the memory to electronically transmit and/or electronically store the at least one notification so as to inform at least one party associated with providing at least one locate request relating to the locate and/or marking operation of the status of the locate and/or marking operation and/or performance of the locate and/or marking operation.
2. The apparatus of claim 1, wherein the processing unit further controls the memory to store in a user profile the preferred notification type and/or the preferred notification communication method.
3. The apparatus of claim 2, wherein the user profile defines default preferences for the preferred notification type and/or the preferred notification communication method with respect to a user associated with the user profile.

35

4. The apparatus of claim 1, wherein the at least one notification comprises status information about the locate and/or marking operation.

5. The apparatus of claim 4, wherein the status information comprises an indication that a locate technician has been dispatched to the dig area.

6. The apparatus of claim 4, wherein the status information comprises an indication of a location of a locate technician assigned to the locate and/or marking operation.

7. The apparatus of claim 4, wherein the status information comprises an indication that the locate and/or marking operation has been completed.

8. The apparatus of claim 4, wherein the status information comprises an indication that the locate and/or marking operation has been certified to meet a quality standard and/or approved.

9. The apparatus of claim 4, wherein the status information comprises an indication that the locate and/or marking operation has been delayed.

10. The apparatus of claim 4, wherein the status information comprises an indication relating to an expiration time of the locate request ticket with respect to a current time.

11. The apparatus of claim 4, wherein the status information comprises an indication that excavation may begin within the dig area.

12. The apparatus of claim 1, wherein the at least one notification comprises performance information about the locate and/or marking operation.

13. The apparatus of claim 12, wherein the performance information about the locate and/or marking operation comprises a virtual white line image indicating the dig area.

14. The apparatus of claim 12, wherein the performance information about the locate and/or marking operation comprises an electronic copy of a completed locate request ticket.

15. The apparatus of claim 12, wherein the performance information about the locate and/or marking operation comprises an assessment of a risk of excavation in the dig area.

16. The apparatus of claim 12, wherein the performance information about the locate and/or marking operation comprises a description of conditions in and/or around the dig area.

17. The apparatus of claim 12, wherein the performance information about the locate and/or marking operation comprises an electronic representation of the locate and/or marking operation.

18. The apparatus of claim 12, wherein the performance information about the locate and/or marking operation comprises an electronic manifest image showing details of the locate and/or marking operation.

19. The apparatus of claim 18, wherein the electronic manifest image of the locate and/or marking operation is stored and/or transmitted as a limited access file.

20. The apparatus of claim 1, wherein the user input includes the preferred notification communication method, and the preferred notification communication includes one or more of an email, an SMS text message, an instant message, a phone call, a pager message, and a rich site summary (RSS) feed.

21. The apparatus of claim 1, wherein the processing unit further controls the communication interface to electronically transmit and/or electronically store the at least one notification such that the at least one notification is accessible via a web site.

22. The apparatus of claim 21, wherein the web site comprises a map showing a location of a locate technician assigned to the locate and/or marking operation.

36

23. The apparatus of claim 21, wherein the web site comprises an electronic manifest showing details of the locate and/or marking operation and/or an electronic representation of the locate and/or marking operation.

24. The apparatus of claim 23, wherein the electronic manifest and/or the electronic representation comprises aggregated information from a plurality of sources.

25. The apparatus of claim 24, wherein the plurality of sources comprises a plurality of locate technicians.

26. The apparatus of claim 21, wherein the web site comprises aggregated information relating to a plurality of locate and/or marking operations.

27. The apparatus of claim 1, wherein the processing unit further controls the communication interface to electronically transmit the at least one notification, and wherein the at least one notification includes a link to a web site.

28. The apparatus of claim 27, wherein the web site comprises a map showing a location of a locate technician assigned to the locate and/or marking operation.

29. The apparatus of claim 27, wherein the web site comprises an electronic manifest showing details of the locate and/or marking operation and/or an electronic representation of the locate and/or marking operation.

30. The apparatus of claim 29, wherein the electronic manifest and/or the electronic representation comprises aggregated information from a plurality of sources.

31. The apparatus of claim 30, wherein the plurality of sources comprises a plurality of locate technicians.

32. The apparatus of claim 27, wherein the web site comprises aggregated information relating to a plurality of locate and/or marking operations.

33. The apparatus of claim 1, wherein the processing unit further controls the communication interface to electronically transmit the at least one notification, and wherein at least a portion of the at least one notification is transmitted as a limited access file.

34. The apparatus of claim 1, wherein the processing unit: further controls the communication interface to receive second user input relating to the dig area; based on the second user input, renders a digital virtual white line image including at least one dig area indicator to provide at least one indication of the dig area with respect to a geographic area; and further controls the communication interface and/or the memory to electronically transmit and/or electronically store information relating to the digital virtual white line image so as to facilitate the locate and/or marking operation.

35. The apparatus of claim 1, wherein the processing unit: further controls the communication interface to receive at least one locate request via the communication interface;

based on the at least one locate request, generates at least one locate request ticket; and

further controls the communication interface and/or the memory to electronically transmit and/or electronically store the locate request ticket so as to initiate the locate and/or marking operation.

36. The apparatus of claim 1, wherein the communication interface comprises a user interface comprising a display, and wherein the processing unit:

controls the communication interface to render a menu-driven graphical user interface on the display to facilitate receiving the user input regarding the preferred notification type and/or the preferred notification communication method; and

controls the user interface to receive the user input.

37

37. The apparatus of claim 36, wherein the menu-driven graphical user interface comprises a notification type menu comprising a menu option corresponding to the preferred notification type.

38. The apparatus of claim 36, wherein the menu-driven graphical user interface comprises a notification communication method menu comprising a menu option corresponding to the preferred notification communication method.

39. The apparatus of claim 1, wherein the processing unit: further controls the communication interface to transmit a message soliciting confirmation that the notification was received and/or accessed by the at least one party associated with providing at least one locate request.

40. At least one computer-readable storage medium encoded with instructions that, when executed on at least one processing unit, perform a method for providing information regarding a locate and/or marking operation, the method comprising:

A) electronically receiving user input regarding a preferred notification type and/or a preferred notification communication method for at least one notification indicating a status of the locate and/or marking operation and/or providing information relating to the performance of the locate and/or marking operation, the locate and/or marking operation comprising detecting and/or marking, in response to at least one locate request ticket, a presence or an absence of at least one underground facility within a dig area, wherein at least a portion of the dig area is planned to be excavated or disturbed during excavation activities;

B) generating the at least one notification based at least in part on the preferred notification type and/or the preferred notification communication method; and

C) electronically transmitting and/or electronically storing the at least one notification so as to inform at least one party associated with providing at least one locate request relating to the locate and/or marking operation of the status of the locate and/or marking operation and/or performance of the locate and/or marking operation.

38

41. A method for providing information regarding a locate and/or marking operation, the method comprising:

A) electronically receiving user input regarding a preferred notification type and/or a preferred notification communication method for at least one notification indicating a status of the locate and/or marking operation and/or providing information relating to the performance of the locate and/or marking operation, the locate and/or marking operation comprising detecting and/or marking, in response to at least one locate request ticket, a presence or an absence of at least one underground facility within a dig area, wherein at least a portion of the dig area is planned to be excavated or disturbed during excavation activities;

B) generating the at least one notification based at least in part on the preferred notification type and/or the preferred notification communication method; and

C) electronically transmitting and/or electronically storing the at least one notification so as to inform at least one party associated with providing at least one locate request relating to the locate and/or marking operation of the status of the locate and/or marking operation and/or performance of the locate and/or marking operation.

42. The method of claim 41, wherein the user input is based at least in part on at least one regulation that mandates the preferred notification type and/or the preferred notification communication method in connection with the locate/mark- ing operation.

43. The method of claim 41, wherein the user input is based at least in part on at least one contract that requires the preferred notification type and/or the preferred notification communication method in connection with the locate/mark- ing operation.

44. The method of claim 41, wherein A) comprises elec- tronically receiving the user input from a facility owner.

45. The method of claim 41, wherein A) comprises elec- tronically receiving the user input from the at least one party associated with providing at least one locate request.

* * * * *